



### Damage assessment of Taipa area in Central Sulawesi

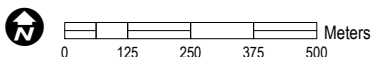
This map illustrates satellite-detected building damage assessment as of 02 October 2018, over Taipa area northeastern Palu city in Central Sulawesi following the 7.5 magnitude earthquake and subsequent tsunami of the 28th of September 2018. The analysis was conducted using a post-event Worldview-2 satellite image acquired 2 October 2018. UNITAR-UNOSAT identified in the analysed area 399 potentially damaged structures. Taking into account the pre-building footprints provided by Humanitarian OpenStreetMap, this represents 10 % of the total number of structures within this analysed zone of Taipa. This is a preliminary analysis and has not yet been validated in the field. Please send ground feedback to UNITAR – UNOSAT.

#### Legend

- Damaged building
- Populated place
- - - UNOSAT analysis extent
- Highway/primary road
- Local road

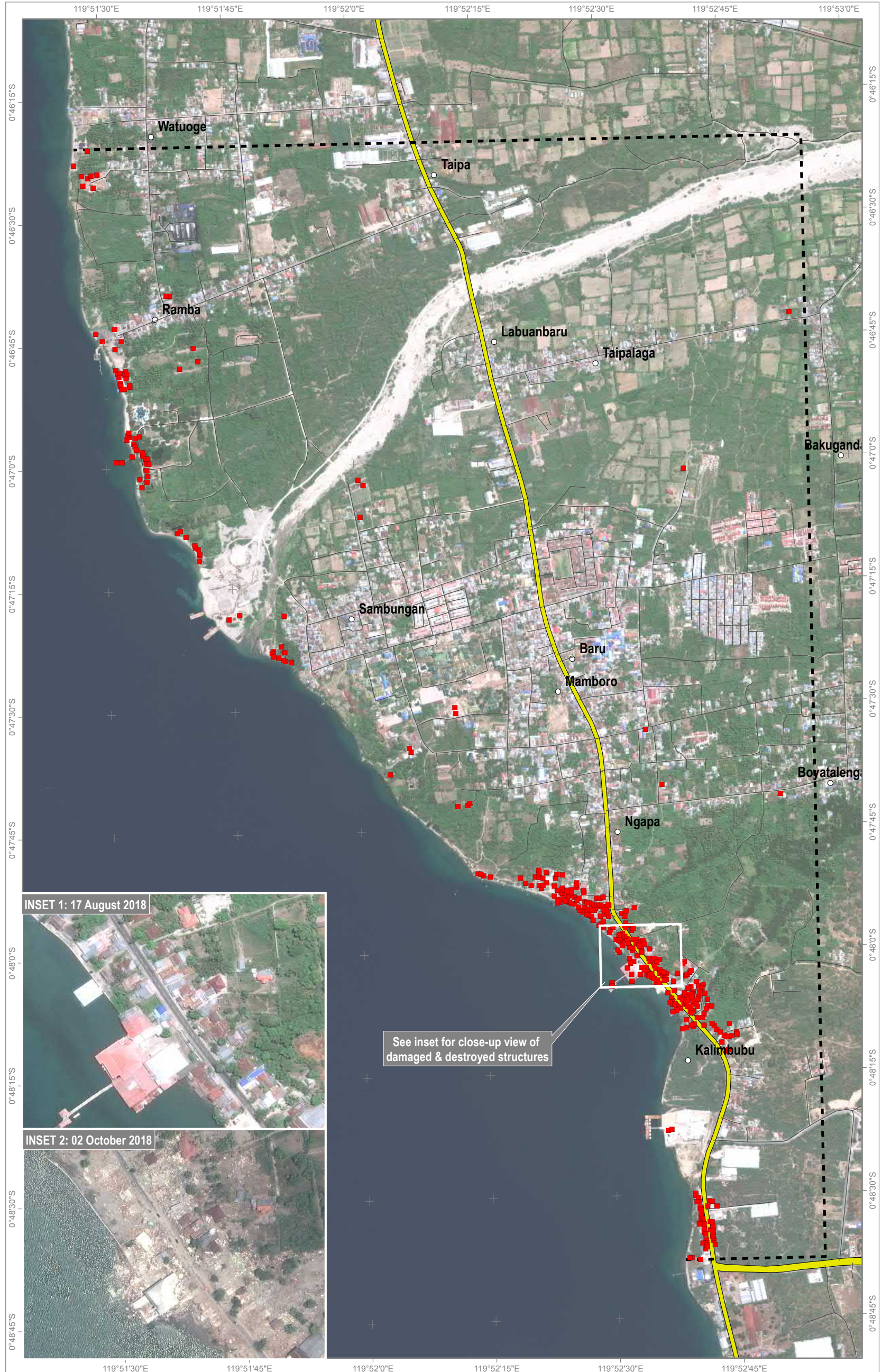


Map Scale for A3: 1:15,000



Analysis conducted with ArcGIS v10.4.1

Coordinate System: WGS 1984 UTM Zone 50S  
Projection: Transverse Mercator  
Datum: WGS 1984  
Units: Meter



Satellite Data(1): Worldview-3  
Imagery Date: 2 October 2018  
Resolution: 40 cm  
Copyright: 2018 DigitalGlobe

Satellite Data(2): GeoEye-1  
Imagery Date: 17 August 2018  
Resolution: 50 cm  
Copyright: 2018 DigitalGlobe

Road Data : OpenStreetMap  
Administrative boundaries: BPS  
Building footprint: HOT OSM  
Other Data: USGS, UNCS, NASA, NGA  
Analysis : UNITAR - UNOSAT  
Production: UNITAR - UNOSAT

The depiction and use of boundaries, geographic names and related data shown here are not warranted to be error-free nor do they imply official endorsement or acceptance by the United Nations. UNOSAT is a program of the United Nations Institute for Training and Research (UNITAR), providing satellite imagery and related geographic information, research and analysis to UN humanitarian & development agencies & their implementing partners. This work by UNITAR-UNOSAT is licensed