

DR Congo

31 December 2018

534,828 refugees and asylum seekers in DRC, among them 52% women.

99.3% of refugees in DRC live in rural areas, and 74% live outside refugee camps or settlements.

3,053* refugees voluntarily returned from DRC to Rwanda in 2018.

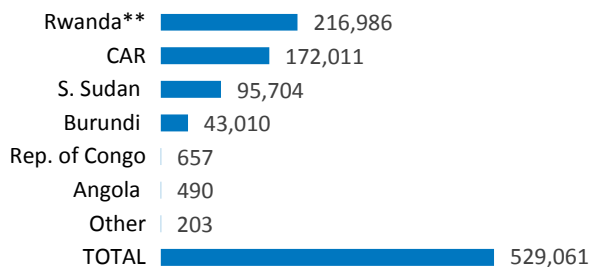
*Figure subject to further verification in Rwanda

POPULATION OF CONCERN

529,061 refugees and **5,767** asylum-seekers in DRC

4.49M* Internally Displaced Persons

Country of origin



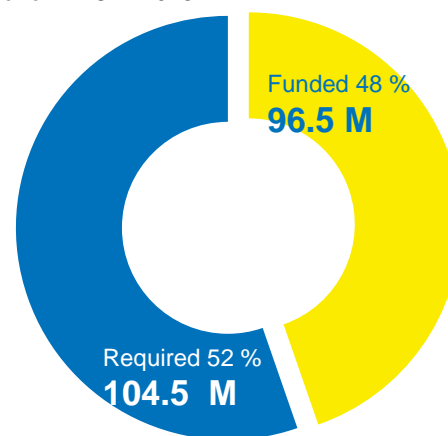
* Source for IDP statistics: OCHA as of December 2017

** The DRC Government presented the number of 245,052 Rwandan refugees as the outcome of a pre-registration exercise by the National Commission for Refugees from December 2014 to January 2015. Biometric registration of Rwandan refugees is ongoing.

FUNDING AS OF 8 JANUARY 2019

USD 201.0 M

requested for DRC in 2018



UNHCR PRESENCE (OCTOBER 2018)

Staff:

- 267 National staff
- 97 International staff
- 42 Affiliate workforce and deployees

Offices:

- 1 Regional Representation in Kinshasa
- 5 Sub-Offices: Aru, Gbadolite, Goma, Kananga, Lubumbashi
- 7 Field Offices: Baraka, Bukavu, Kalemie, Libenge, Mbuji-Mayi, Monga, Tshikapa
- 6 Field Units: Aba, Bili, Bunia, Dungu, Uvira, Zongo

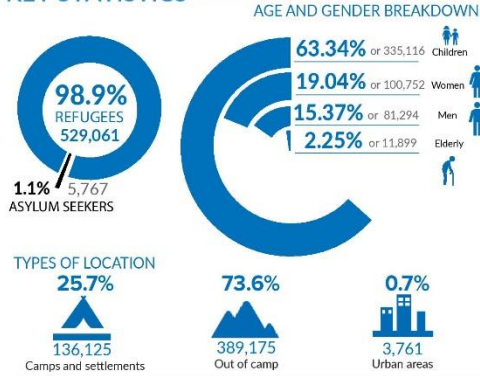


A Central African refugee family with non-food items in Nzakara, Nord-Ubangi Province. © UNHCR 2018 / N. Gergely

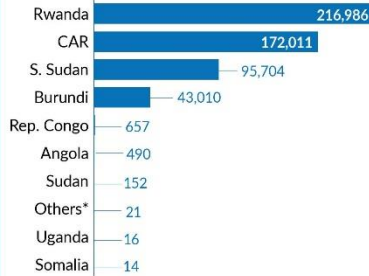
534,828

TOTAL NUMBER OF REFUGEES AND ASYLUM SEEKERS

KEY STATISTICS



REFUGEE POPULATION BY COUNTRY OF ORIGIN

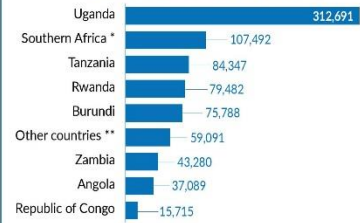


* Others include Ivory Coast, Eritrea, Syria, Liberia, Chad, etc.

REFUGEES FROM DRC IN AFRICA

814,975

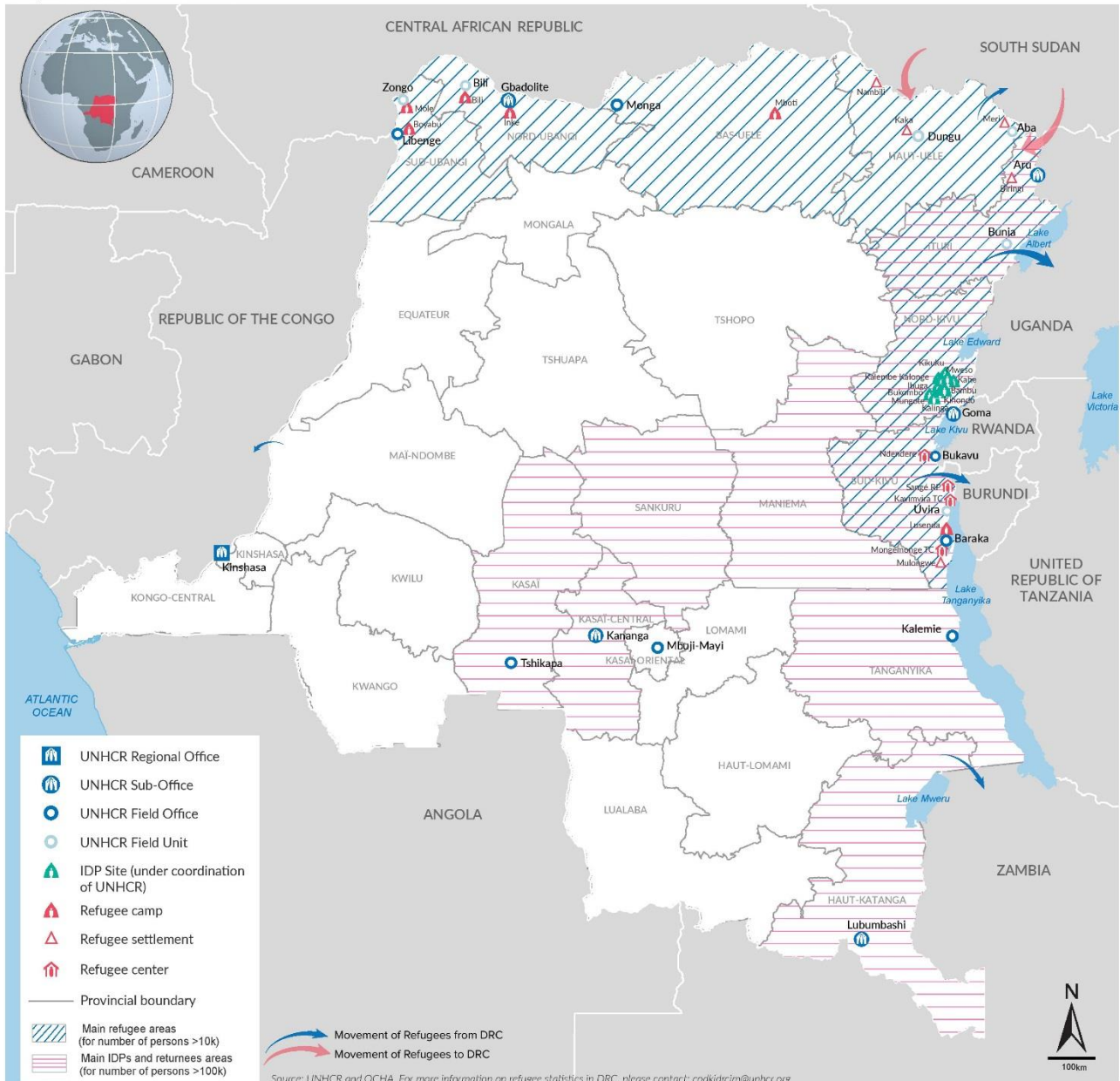
TOTAL DRC REFUGEE POPULATION



Source: UNHCR

*Southern Africa includes Namibia, Botswana, Lesotho, Malawi, Zimbabwe, Mozambique, Madagascar, RSA and the Kingdom of Eswatini.

**Other countries include South Sudan, Kenya, Central African Republic and Chad



Working with Partners

- Together with the DRC Government, working closely with the National Commission for Refugees (CNR), UNHCR ensures international protection and delivery of multi assistance to persons of concern.
- UNHCR works with 16 national and international implementing partners: ACTION AID, ACTED, ADES, ADSSE, AIDES, AIRD, ADRA, COOPI, CNR, DRC, INTERSOS, NRC, SAVE CONGO, TSF and WAR CHILD NL and WAR CHILD UK.
- Coordination mechanisms: Within the cluster system, UNHCR leads the Protection Cluster and co-leads the Protection and Prevention component of the National Strategy on SGBV. UNHCR also leads the Shelter Working Group within the Shelter/NFI Cluster, co-leads the Camp Coordination and Camp Management (CCCM) Working Group jointly with IOM, and co-leads the National Cash Working Group jointly with UNOCHA.

External / Donors Relations

Donors for UNHCR operations in DRC in 2018

United States of America (59.8M) | CERF (3.9M) | Sweden (2.5M) | European Union (2.4M) | Canada (1.2M) | France (1.2M) | Italy (0.9M) | Australia for UNHCR (0.8M) | UNIQLO (0.5M) | International Olympic Committee (0.3M) | Spain (0.3M) | UNAIDS (0.2M) | Vodafone Foundation (0.1M) | Miscellaneous Donors in the Republic of Korea (0.1M)

Donors of regional or sub-regional funds 2018

United States of America (177.3M) | Germany (23.5M) | Private Donors Australia (14.6M) | Sweden (11.4M) | Denmark (8.8M) | Private Donors Germany (7.8M) | Finland (5.8M) | Australia (3.8M) | Canada (3.3M) | Private Donors Republic of Korea (2.9M) | Norway (2.6M) | Private Donors Sweden (2.4M)

Major donors of unrestricted and regional funds in 2018

Sweden (98.2M) | Private Donors Spain (71M) | Netherlands (47.1M) | United Kingdom (45.3M) | Norway (42.5M) | Private Donors Republic of Korea (38.7M) | Japan (26.5M) | Denmark (25.5M) | Private Donors Japan (20.3M) | Private Donors Italy (18.7M) | Switzerland (15.8M) | Private Donors USA (14.2M) | France (14M) | Germany (13.7M) | Private Donors Sweden (13.2M) | Italy (11.2M)

CONTACTS

Andreas Kirchhof, Senior Regional External Relations Officer DRC, kirchhof@unhcr.org, Tel: +243 996 041 000, Cell +243 81 700 94 84

Simon Lubuku, Senior Public Information Associate DRC, lubuku@unhcr.org, Tel : +243 996 041 000, Cell +243 81 950 02 02

LINKS

[DR Congo Emergency page](#) - [UNHCR DRC operation page](#) - [Facebook page](#) - [Twitter](#)