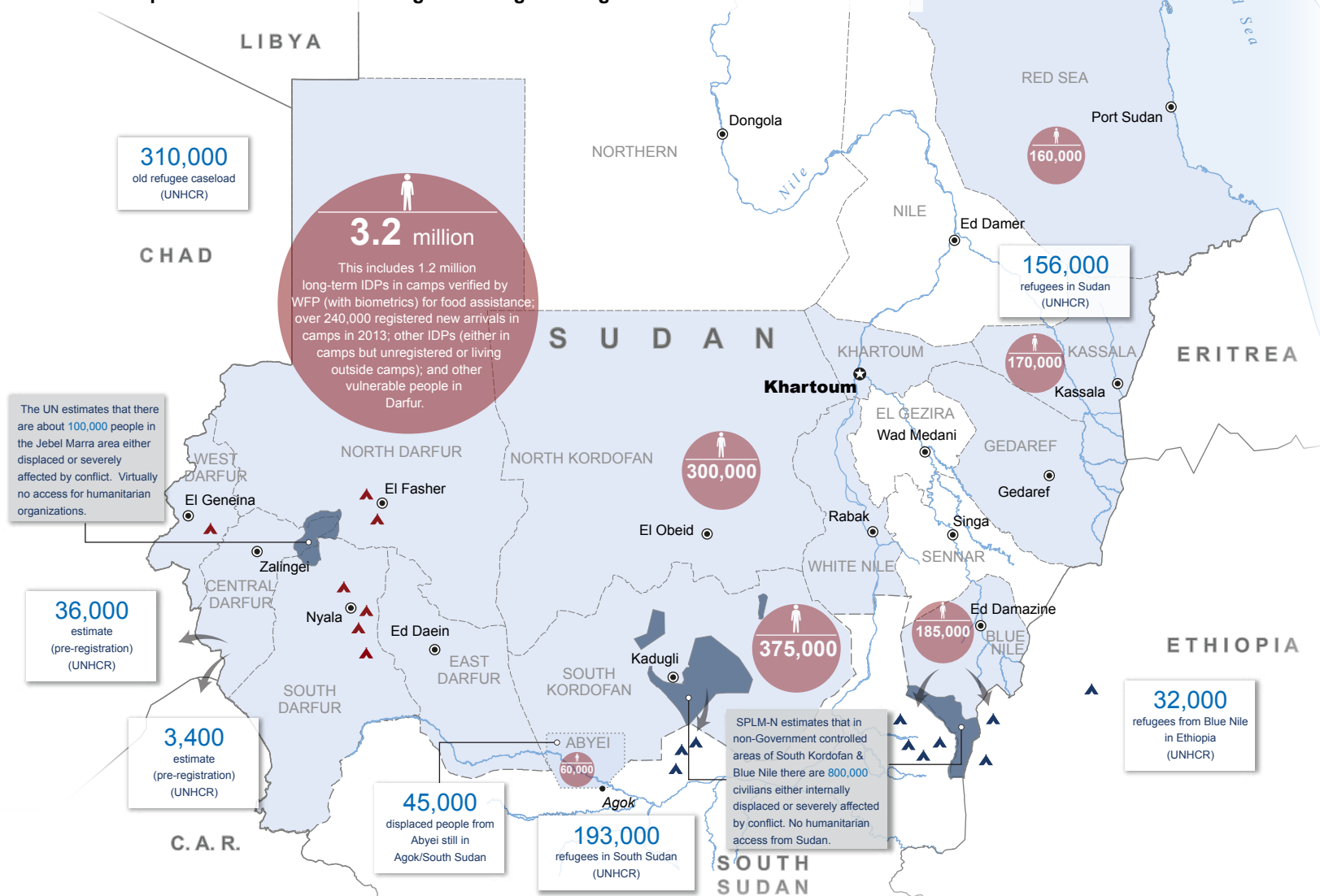


In Darfur, over **two million** people have been internally displaced as a result of conflict since 2003. In addition, there are over **300,000** Darfuri refugees in Chad. Exact numbers of displaced people are hard to determine as some have been displaced on multiple occasions, some were displaced temporarily while others remained displaced for many years, and some are in camps while others are in host communities or left the area. In South Kordofan and Blue Nile, well over a million people have been displaced or severely affected by conflict since 2011. The majority remain in Sudan, while some **225,000** fled to South Sudan or Ethiopia. Figures below are for people targeted for humanitarian assistance by humanitarian organizations in Sudan. The map also shows Sudanese refugees in neighbouring countries.

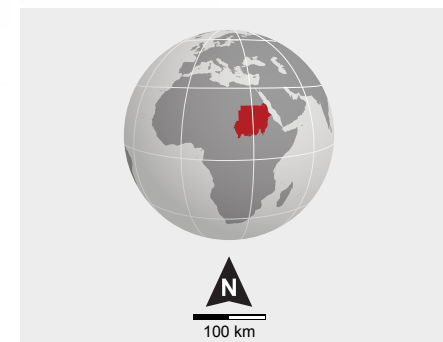


### LEGEND

- Country capital
- State capital
- International boundary
- Undetermined boundary
- State boundary
- Abyei region
- Refugee camp
- IDP camp > 40,000 people
- Population movements
- People targeted for humanitarian assistance

### HUMANITARIAN ACCESS

- Access extremely restricted/ denied
- Access possible but within restrictions
- Non-priority area for humanitarian response



**Date:** 31 August 2013

**Sources:** OCHA, UNHCR, UNISFA, WFP, WHO, IOM, HAC, Humanitarian Country Team, Natural Earth, USGS, Government IDP Center

**Feedback:** [ochasudan\\_feedback@un.org](mailto:ochasudan_feedback@un.org)  
[www.unocha.org/sudan](http://www.unocha.org/sudan) [www.reliefweb.int](http://www.reliefweb.int)

*The boundaries and names shown and the designations used on this map do not imply official endorsement or acceptance by the United Nations. Final boundary between the Republic of Sudan and the Republic of South Sudan has not yet been determined. Final status of the Abyei area is not yet determined.*