

HIGHLIGHTS

The 2015 Sudan Humanitarian Response Plan targets assistance to an estimated **5.4 million** of the most vulnerable people, including **1.2 million** of the most severely malnourished children under age five. Vulnerability is primarily driven by conflict-induced displacement, and chronic food insecurity and malnutrition.

At the end of 2014, some **3.1 million** people in Sudan were internally displaced; the majority in Darfur. A further **0.7 million** people were refugees displaced from their country of origin or South Sudanese who are unable to move to South Sudan.

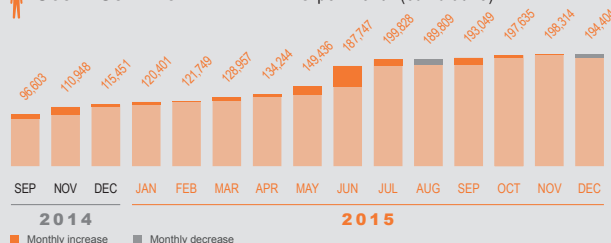
Since the HRP was developed, Sudan has seen new emergencies that have generated further displacement. Since January 2015, **247,000** people have been displaced from their homes by conflict in Darfur. **110,000** of these IDPs have received humanitarian assistance, while **70,000** live in areas to which humanitarians have limited or no access (the majority in the Jebel Marra area of Darfur). About **67,000** of the people displaced this year have returned to their area of origin.

In government-controlled areas of South Kordofan an estimated **52,000** people have been displaced since January, of whom **21,000** have returned; and in government-controlled areas of Blue Nile, an estimated **60,000** have been displaced (**24,000** relocated; **26,000** returnees; and **10,000** displaced) since January.

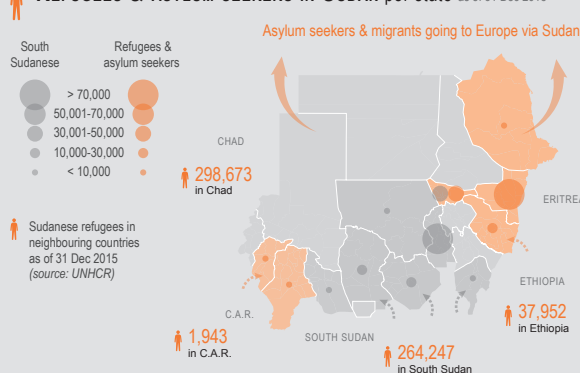
344,180 total refugees & asylum seekers in Sudan (including South Sudanese new arrivals)
(Source: UNHCR)

This does not include some 30,000 Chadians in a refugee-like situation who are pending verification.

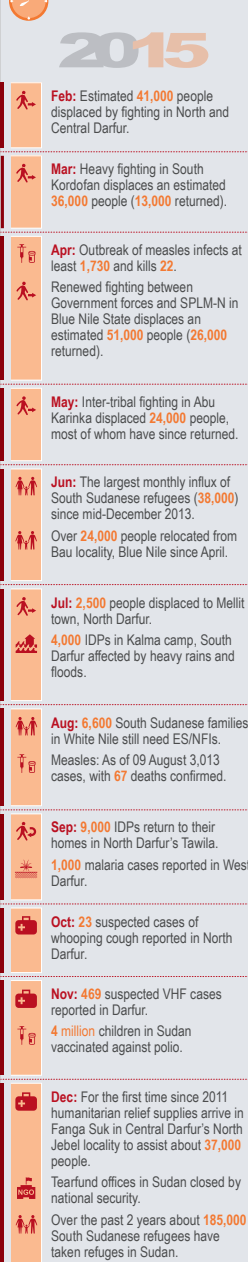
SOUTH SUDANESE NEW ARRIVALS per month (cumulative)



REFUGEES & ASYLUM SEEKERS IN SUDAN per state as of 31 Dec 2015



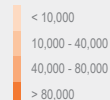
TIMELINE



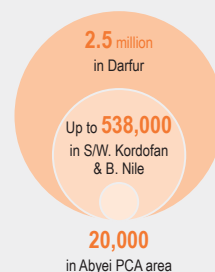
INTERNALLY DISPLACED POPULATION per locality, 31 Dec 2014

Source: Humanitarian Partners est.

LEGEND

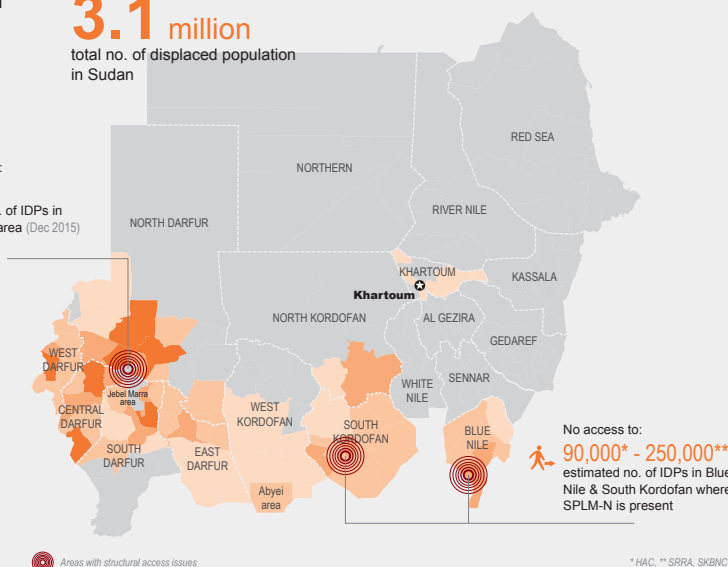


Main displacement figures

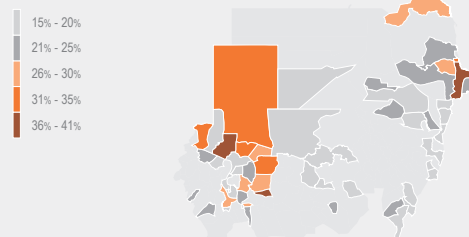


3.1 million total no. of displaced population in Sudan

No access to: **38,960** estimated no. of IDPs in Jebel Marra area (Dec 2015)
Source: HAC



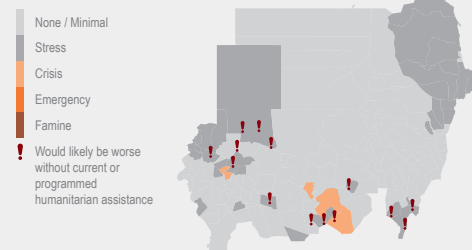
LOCALITIES ABOVE GLOBAL ACUTE MALNUTRITION EMERGENCY THRESHOLD (15%)



Source: Ministry of Health (S3M survey)



FOOD SECURITY LEVELS (Oct - Dec 2015)



Source: FEWSNET December 2015 report



PEOPLE IN NEED OF HUMANITARIAN ASSISTANCE in main regions, as per 2015 Humanitarian Response Plan

