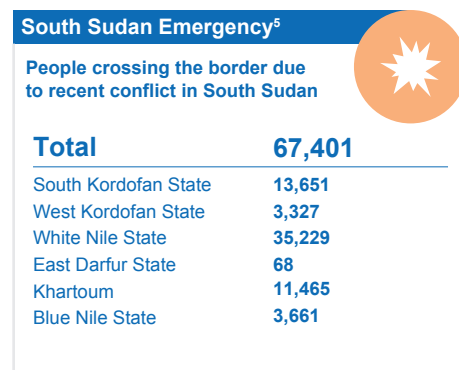
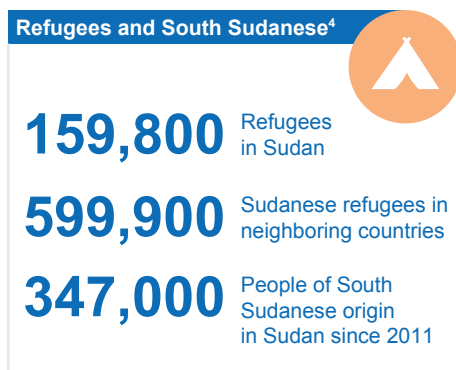
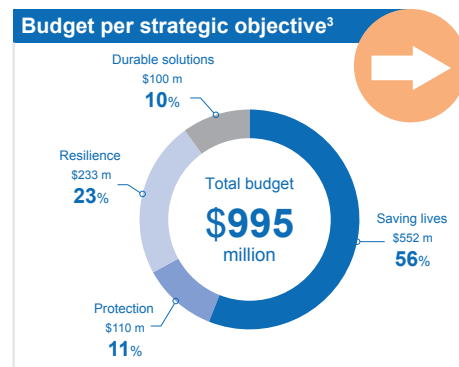
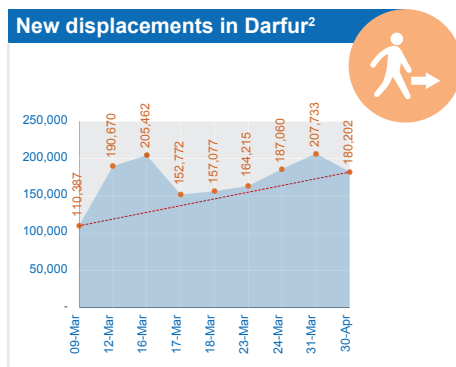
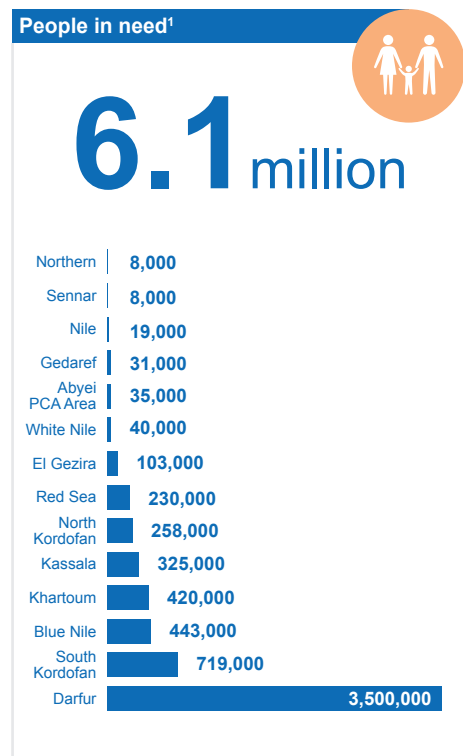


Sudan: Humanitarian Dashboard (30 April 2014)

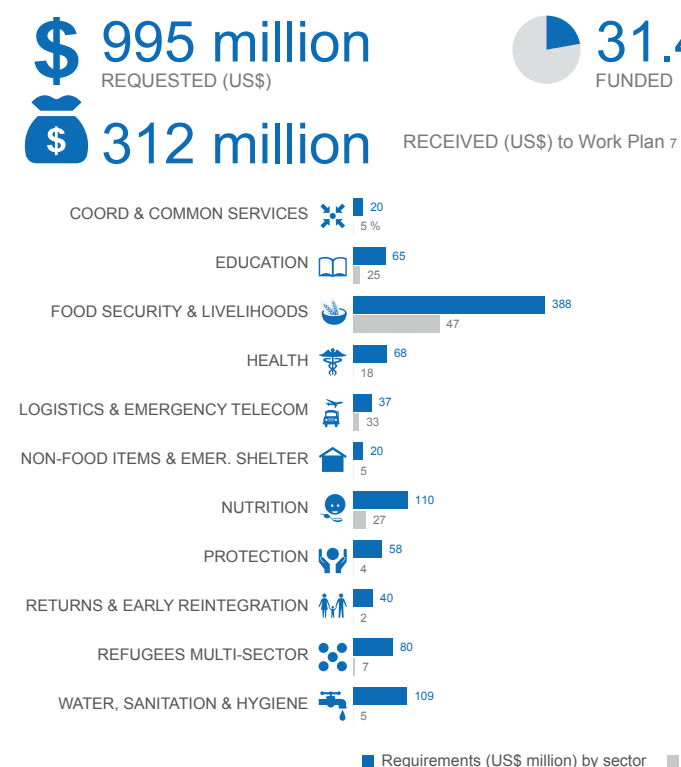
OVERVIEW

A total of **6.1 million** people are in need of humanitarian assistance in Sudan. In 2013, the humanitarian situation deteriorated with more people displaced throughout the Darfur states, South and North Kordofan, and Blue Nile. Since the beginning of 2014, fighting between Government security forces and armed movements have led to the internal displacement of an estimated **180,000** people in Darfur. Ongoing conflict in South Sudan has led to an estimated **67,401** people crossing the border into Sudan.

KEY FIGURES



HUMANITARIAN WORK PLAN 2014⁶



FUNDING 2014

