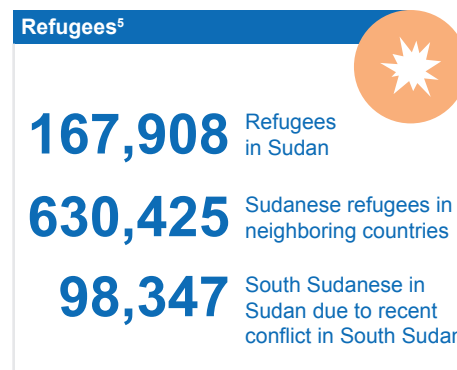
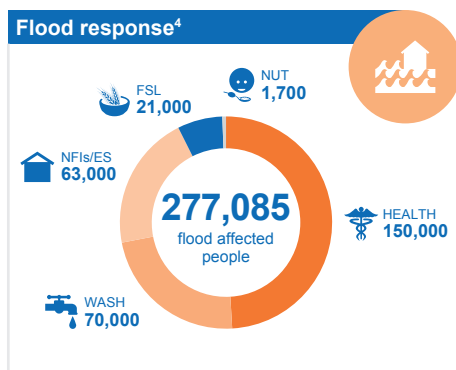
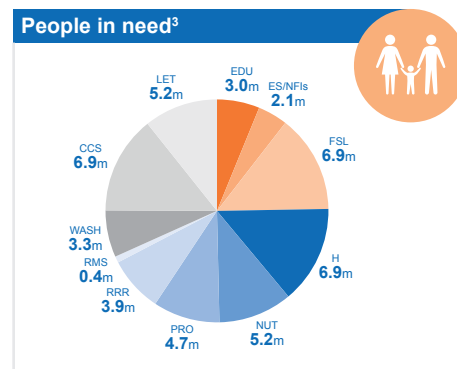
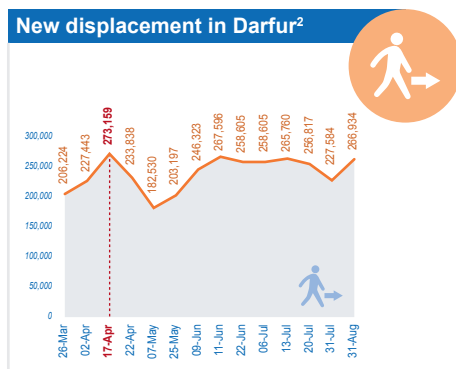
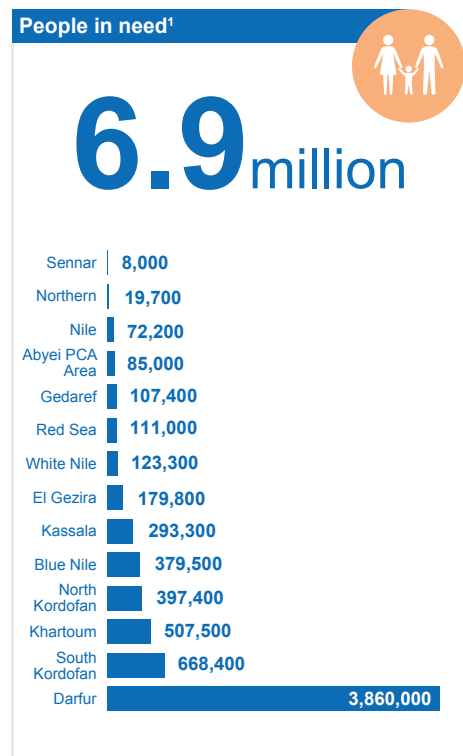


OVERVIEW

A total of **6.9 million** people are in need of humanitarian assistance in Sudan. Since the beginning of 2014, fighting between Government security forces and armed movements have led to the internal displacement of an estimated over **400,000** people in Darfur. Ongoing conflict in South Sudan has led to almost **100,000** people crossing the border into Sudan. Heavy rains and floodings that began in late July 2014 have affected some **277,085** people.

KEY FIGURES

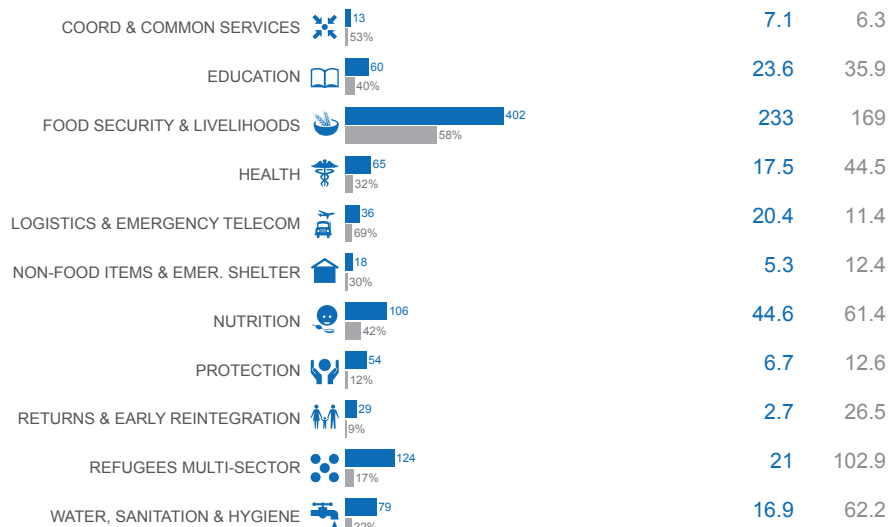


HUMANITARIAN WORK PLAN 2014⁶

\$ 986 million REQUESTED (US\$)

47.2% FUNDED

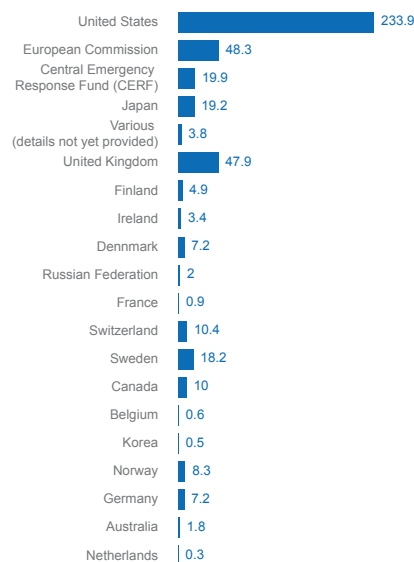
\$ 466 million RECEIVED (US\$) to Work Plan 7



■ Requirements (US\$ million) by sector ■ Funded (%) by sector

FUNDING 2014

\$ 508 million RECEIVED (US\$)



■ Contributions (US\$ million) by donor