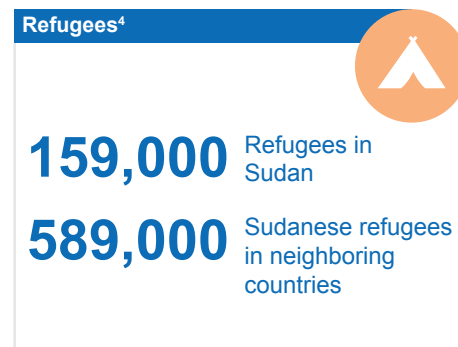
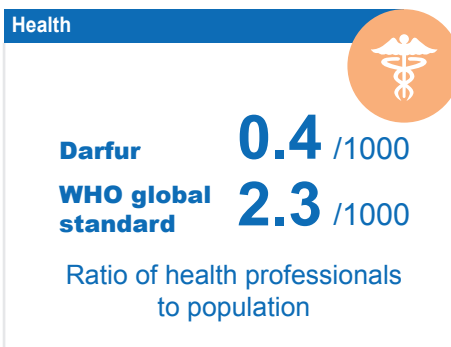
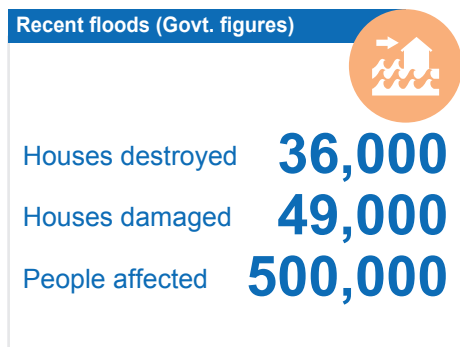
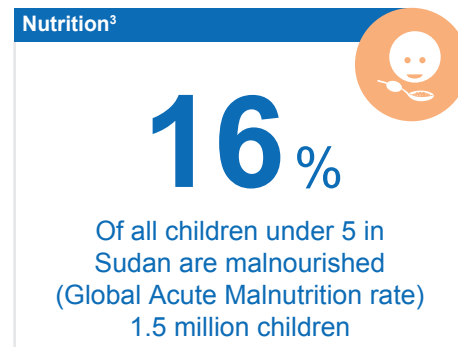
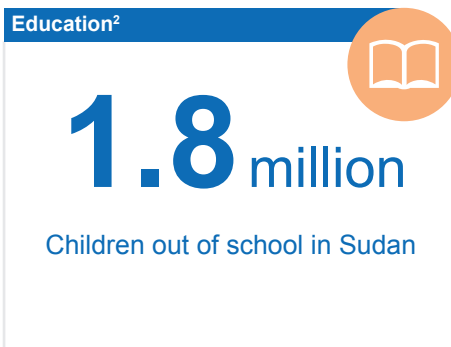
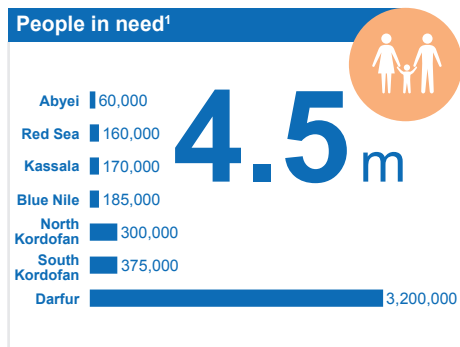


## OVERVIEW

In Darfur, over two million people have been internally displaced as a result of conflict since 2003. Most of these people are still receiving humanitarian assistance. In South Kordofan and Blue Nile, over a million people have been displaced or severely affected by conflict since 2011. Flooding this year has destroyed or damaged 67,000 homes affecting 340,000 people, according to Government figures. The UN and its partners are currently targeting over 4.5 million people for humanitarian assistance.

## KEY FIGURES



## FUNDING: SUDAN HUMANITARIAN WORK PLAN 2013

**\$ 985 million**  
REQUESTED (US\$)

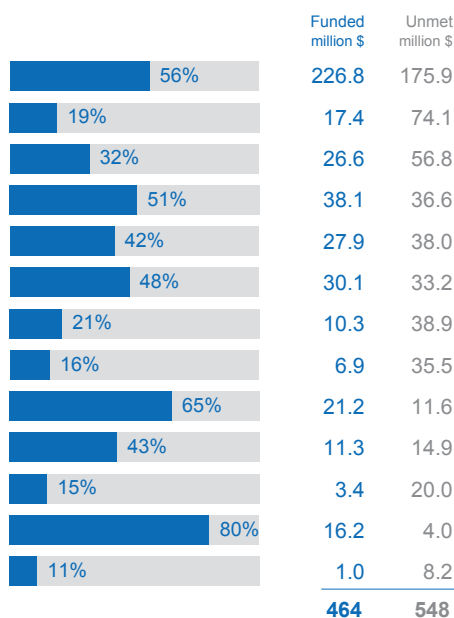
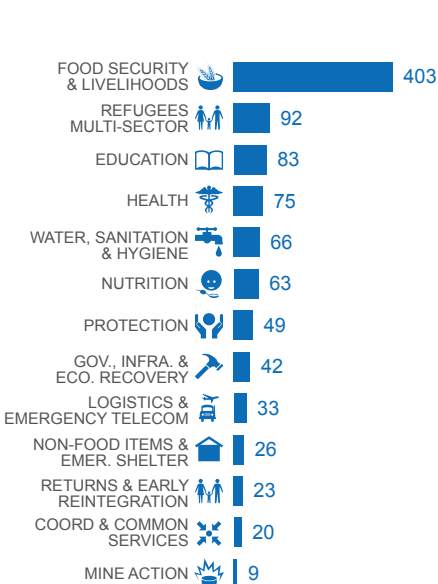
**47%**  
FUNDED

**464 million**  
RECEIVED (US\$)

Requirements by sector (million \$)

Per cent funded by sector

Contributions (million \$)<sup>5</sup>



CERF: \$42 million 9.1% of contributions

