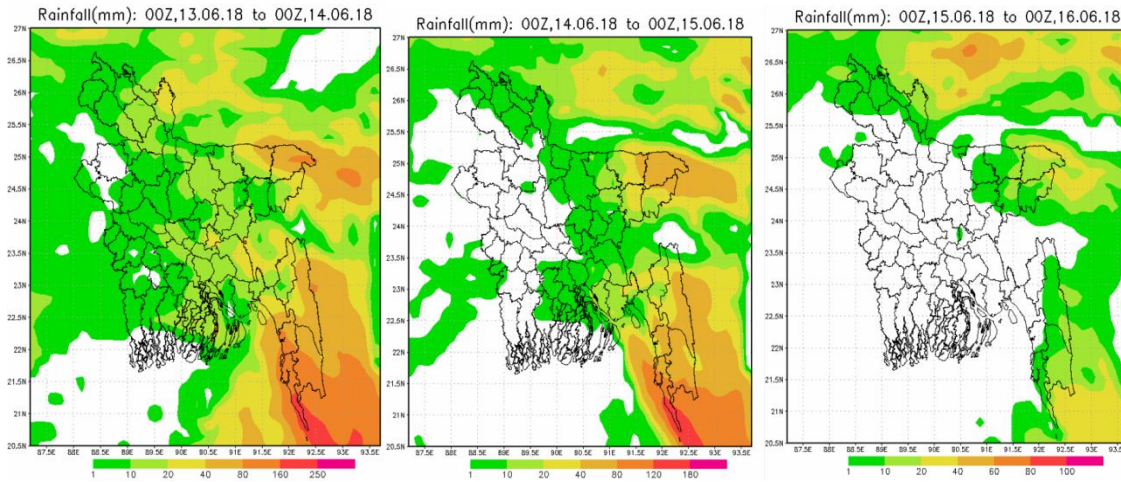


## Special Flood Outlook in next 24-48 hours for North-Eastern & South-Eastern Basin as on 13.06.2018

According to the information of Bangladesh Meterological Department (BMD) & Indian Meterological deaprtment (IMD) , Medium to Heavy rainfall in expected in North-eastern, South-eastern part of Bangladesh & adjoining Indian part with very heavy rainfall in some isolated areas in next 24-48 hours.



(a)24 hr Forecast

(b) 48 hr Forecast

(c)72 hr Forecast

Figure: BMD Weather Forecast (NWP)

### Sylhet, Sunamgonj & Moulavibazar:

Rainfall with a magnitude of 40-80 mm is expected in next 24-48 hours in this region and adjoining Indian part. Water levels in Surma- Kushiyara and Manu rivers may continue to rise at slower rate in next 24 hours.

### Bandarban & Cox'Bazar:

Rainfall with a magnitude of 40-80 mm in Bandarban and 80-120 mm in Cox'Bazar and adjoining Indian part are expected in next 24-48 hours. Water levels in Matamuhuri and Sangu rivers may rise rapidly in next 24 hours.

**(Md. Arifuzzaman Bhuyan)**  
**Executive Engineer**  
**Duty Officer, FFWC, BWDB.**

Cell no: 01715040144