



1.35 million*

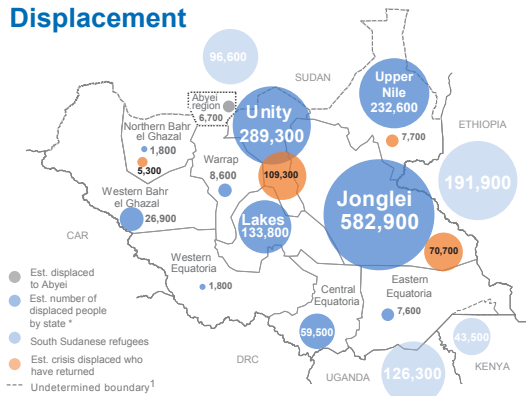
est. people internally displaced since 15 December

Displacement



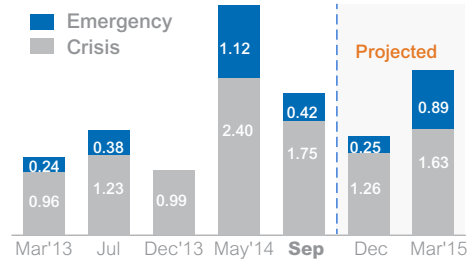
458,300**

est. people sheltering in neighbouring countries



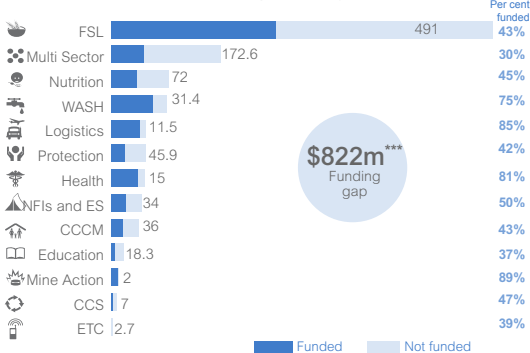
IPC Food Insecurity Trend

March 2013 - March 2015



Funding

CRP requirements and funding status by cluster (millions \$)

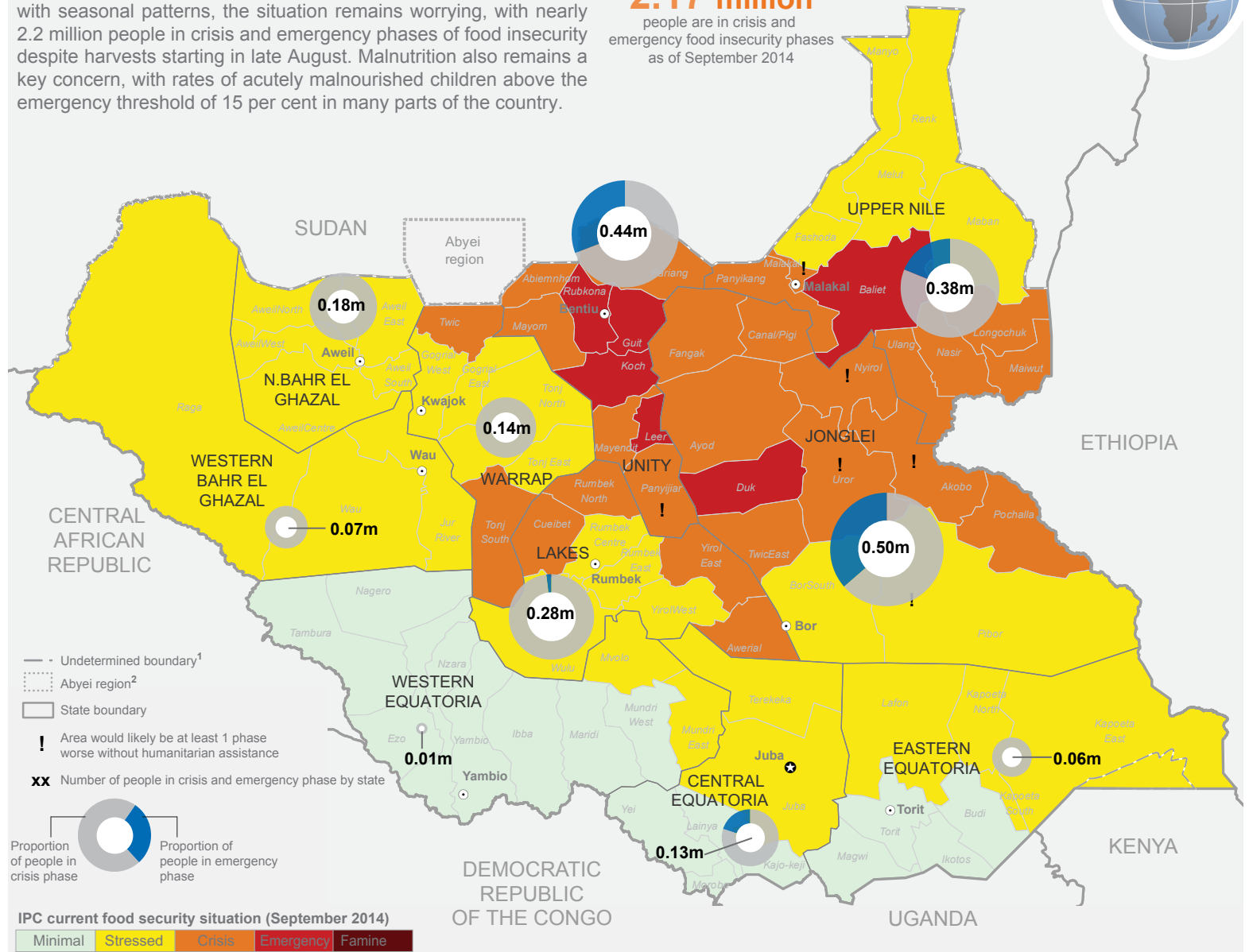


Food security situation

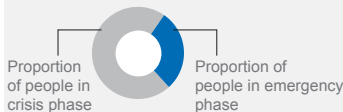
Latest IPC data shows that while food security has improved in line with seasonal patterns, the situation remains worrying, with nearly 2.2 million people in crisis and emergency phases of food insecurity despite harvests starting in late August. Malnutrition also remains a key concern, with rates of acutely malnourished children above the emergency threshold of 15 per cent in many parts of the country.

2.17 million

people are in crisis and emergency food insecurity phases as of September 2014



--- Undetermined boundary¹
 - - - - - Abyei region²
 □ State boundary
 ! Area would likely be at least 1 phase worse without humanitarian assistance
 xx Number of people in crisis and emergency phase by state



IPC current food security situation (September 2014)

