

1.52 million*
est. people internally displaced since 15 December 2013 (as of 30 April 2015)

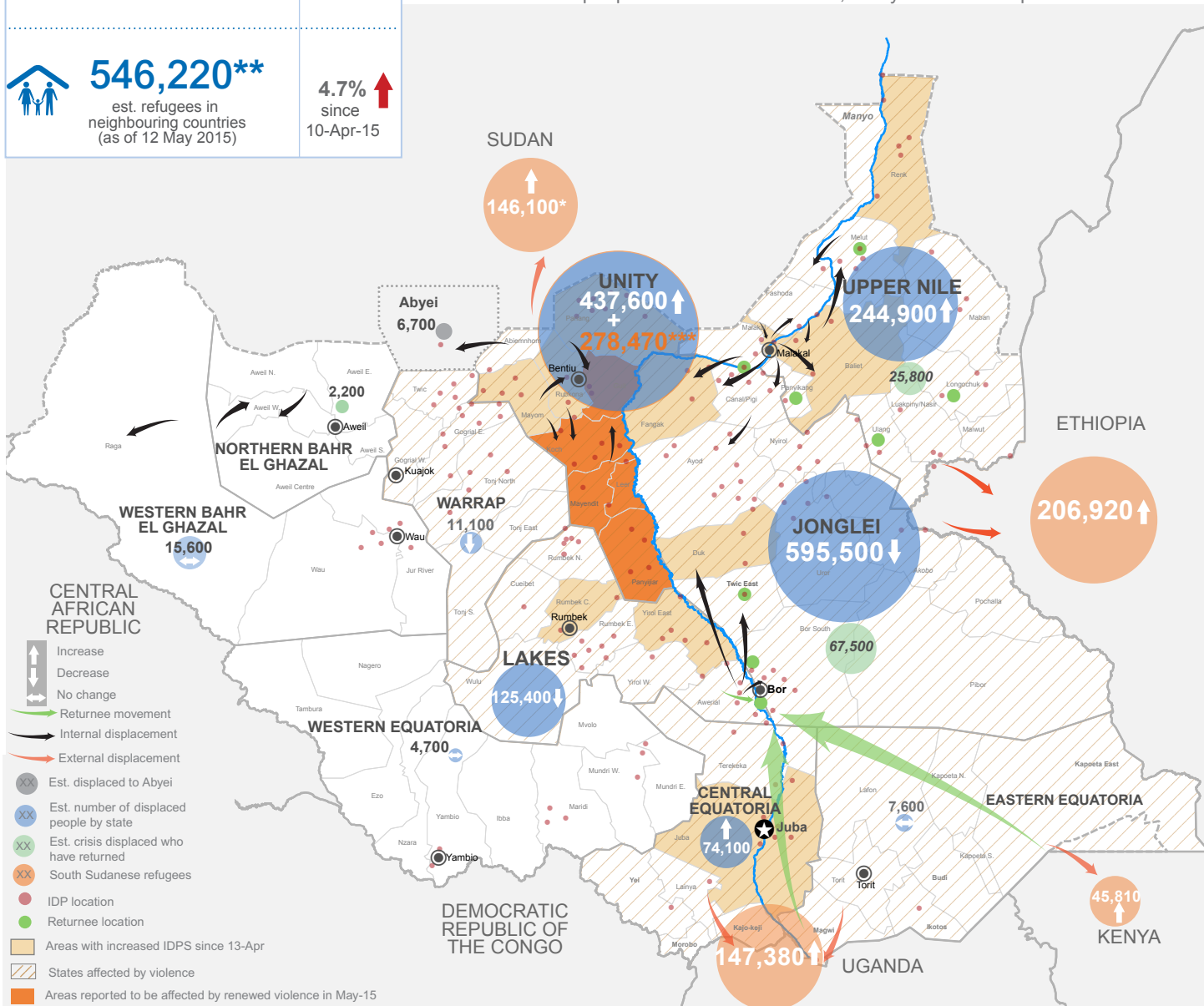
2.0% ↓ since 13-Apr-15

546,220**
est. refugees in neighbouring countries (as of 12 May 2015)

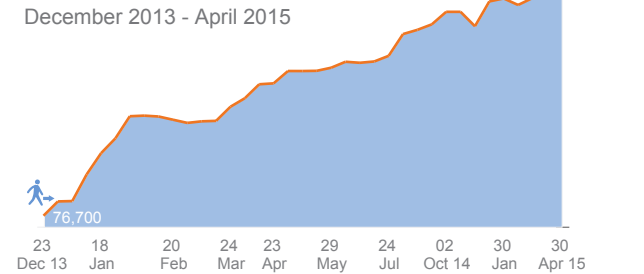
4.7% ↑ since 10-Apr-15

Displacement and population movement

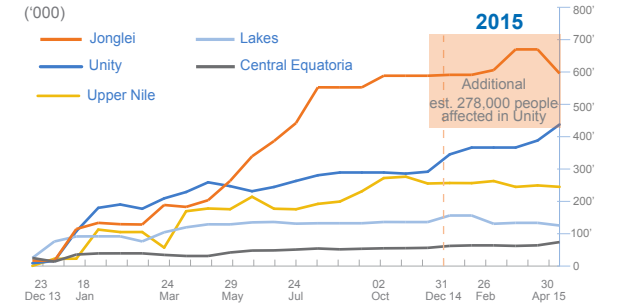
Renewed fighting in Unity and Upper Nile states has affected hundreds of thousands of people - nearly 300,000 people were affected by the upsurge of conflict in the first days of May alone. The number of displaced from the latest surge of conflict is not reflected as such, due to the fluid dynamics and lack of verified information. The ongoing conflict continues to affect millions of people across South Sudan. Some 1.52 million people have fled their homes, many of them multiple times.



Internal Displacement trend



Five states most affected, December 2013 - April 2015



Humanitarian response

