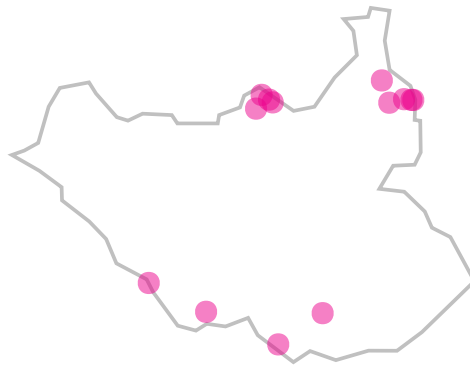
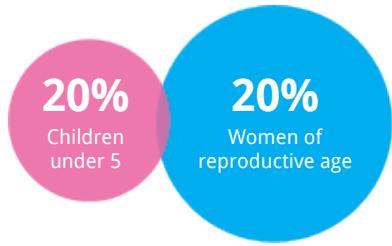


Country report SOUTH SUDAN 2017

Population

274,920 refugees



Origin of refugees

SUDAN **DEMOCRATIC REPUBLIC OF THE CONG** **CENTRAL AFRICAN REPUBLIC** **ETHIOPIA**

Sites

PARMIR **GENDRASSA** **DORO** **AJUONG THOK** **MAKPANDU** **KAYA** **GOROM** **YIDA** **PANRIENG** **YUSUF BATIL** **EZO** **BUNJ HOSPITAL** **LASU**

Key Indicators Public Health

CRUDE MORTALITY RATE

0.01 - 0.52

DEATHS/1,000/MONTH



STANDARD <0.75

U5 MORTALITY RATE

0.0 - 1.3

DEATHS/1,000/MONTH



STANDARD <1.5

HEALTH UTILISATION RATE

0.5 - 3.9

NEW VISITS/PERSON/YEAR



STANDARD 1 - 4

COVERAGE OF LLITN

-

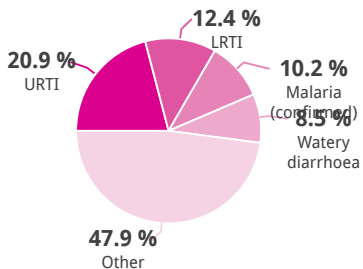
PERSONS/LLITN



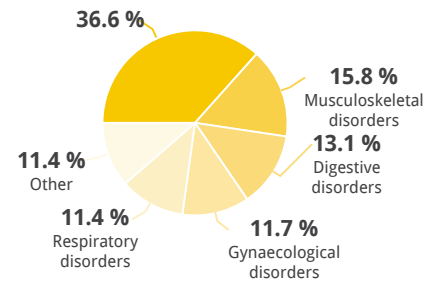
STANDARD 2 persons/LLITN

Primary health care consultations by disease

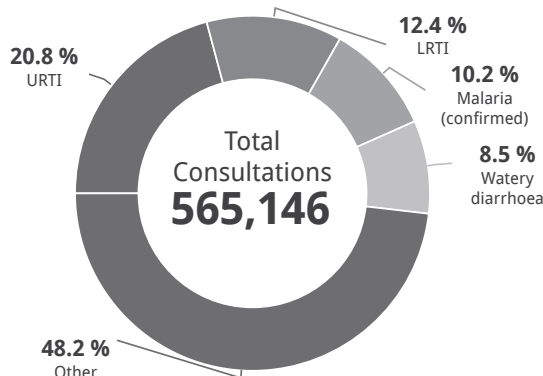
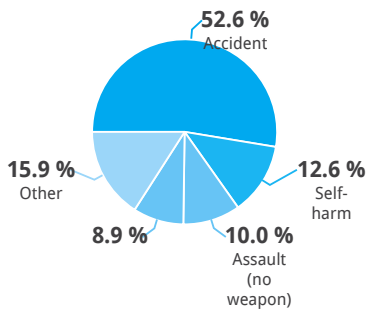
COMMUNICABLE DISEASES



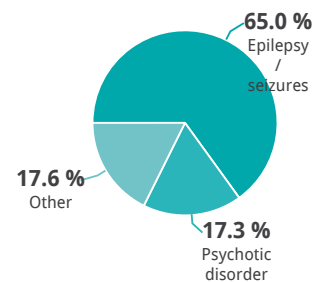
NON-COMMUNICABLE DISEASES



INJURIES



MENTAL HEALTH



Key Indicators Public Health

PUBLIC HEALTH

Are all essential medicines internationally procured	Yes	✓
Does the operation use standard clinical protocols for diabetes?	Yes	✓
Is the referral system governed by SOPs?	Yes	✓
Is integrated management of childhood illness (IMCI) implemented?	Yes	✓
Does the operation use standard clinical protocols for Hypertension?	Yes	✓

INDICATOR

Does the operation have an outbreak response plan?	Yes	✓
Number of Outbreaks reported	1	

MENTAL HEALTH

Are mental health activities implemented as part of the public health programming in 2017?	Yes	✓
Do refugees have access to health staff trained in MHPSS with mhGAP Intervention Guide or similar tools?	Yes	✓
Are community outreach workers or psychosocial workers available to provide psychosocial support services and follow-up for people with mental disorders?	Yes	✓
Has the operation adopted mental health intervention guide?	Yes	✓
Has there been a training for doctors, clinical officers and nurses in MHPSS with mhGAP Intervention Guide?	Yes	✓

INDICATOR

Key Indicators Reproductive Health and HIV

MATERNAL MORTALITY

11

ANTENATAL CARE COVERAGE

51% - 99%



STANDARD >95%

SKILLED BIRTH ATTENDANCE

34% - 103%
OF ALL BIRTHS



STANDARD 100%

POSTNATAL CARE COVERAGE

8% - 176%



STANDARD >95%

CONTRACEPTIVE PREVALENCE RATE

0% - 44%



STANDARD >30%

ELIGIBLE RAPE SURVIVORS PROVIDED WITH PEP WITHIN 72H

33% - 100%



STANDARD 100%

PMTCT COVERAGE

9% - 102%



STANDARD 100%

CONDOM DISTRIBUTION RATE

0 - 0
/PERSON/MONTHS



STANDARD >0.5

REPRODUCTIVE HEALTH

Are cervical cancer screening programs available for the host nationals?	No	✗
Are HPV vaccination programs for girls < 16 years old available for the host nationals?	No	✗
Do you have standard STIs case management protocols in place?	Yes	✓
Did you have an obstetric fistula detection and referral programme?	Yes	✓
Do refugees have equal access to HIV testing & counselling as host nationals?	Yes	✓

INDICATOR

HIV

Advocacy for legislation protecting the rights of HIV positive PoCs?	Yes	✓
Equal access to EMTCT services as host nationals ensured?	Yes	✓
Are there existing ART services for the host nationals?	Yes	✓
Equal access to ART services as host nationals ensured?	Yes	✓
Is there mandatory HIV testing for refugees?	No	✓

INDICATOR

Nutrition

GLOBAL ACUTE MALNUTRITION

6% - 7%



STANDARD <10%

SEVERE ACUTE MALNUTRITION

0% - 1%



STANDARD <2%

STUNTING

35% - 56%



STANDARD <20%

ANAEMIA

CHILDREN 44% - 53%
WOMEN 24% - 29%



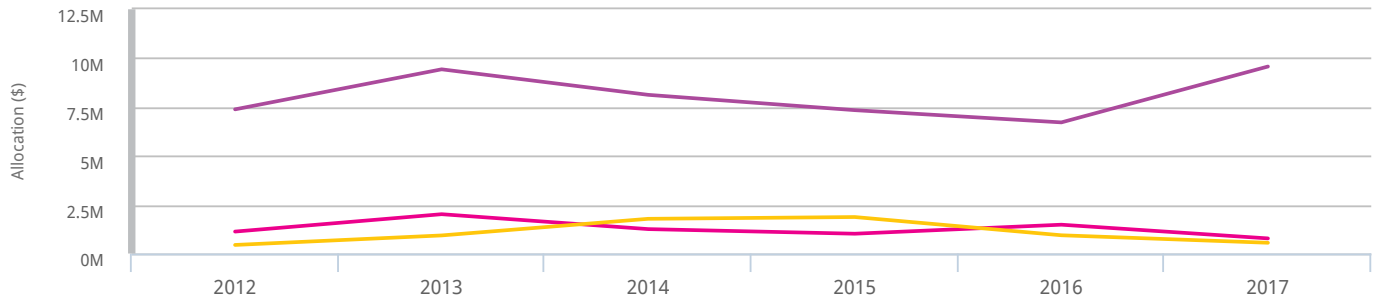
STANDARD <20%

NUTRITION

INDICATOR

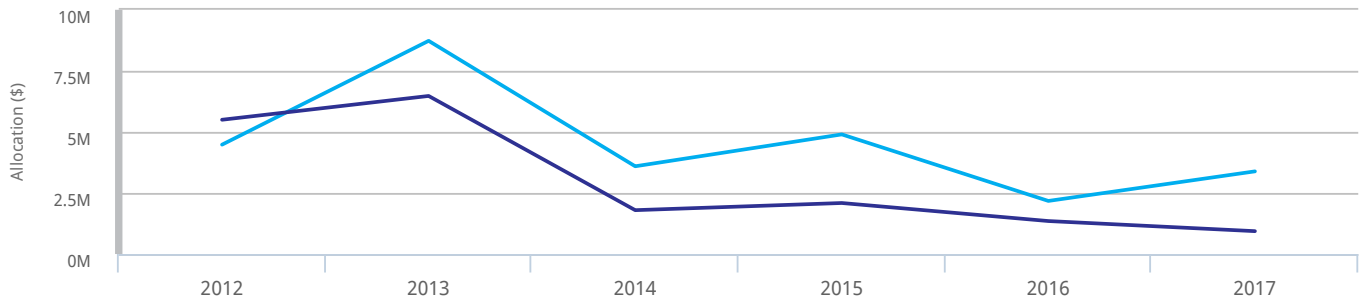
Did you have an emergency in your operation last year?	Yes	✗
--	-----	---

Country allocations for Public Health, RH, HIV and Nutrition



	2012	2013	2014	2015	2016	2017
PUBLIC HEALTH	7,377,910	9,427,348	8,120,778	7,336,593	6,710,769	9,570,797
RH & HIV	1,121,985	2,011,961	1,248,729	1,012,925	1,474,468	772,750
NUTRITION	437,939	925,141	1,775,706	1,866,660	933,217	549,789
TOTAL	8,937,833	12,364,450	11,145,213	10,216,178	9,118,454	10,893,336
% OF TOTAL	7%	10%	11%	14%	15%	13%

Country Allocations and Key Indicators for WASH



	2012	2013	2014	2015	2016	2017
WATER	4,477,754	8,728,566	3,592,292	4,897,616	2,173,073	3,384,186
SANITATION	5,497,390	6,471,696	1,795,173	2,088,310	1,349,597	935,423
TOTAL	9,975,144	15,200,262	5,387,466	6,985,927	3,522,670	4,319,609
% OF TOTAL	8%	13%	5%	10%	6%	5%

AVERAGE LITERS/ PERSON/ DAY: 9 - 25 (Standard: ≥ 20)

PERSONS PER COMMUNAL TOILETS/ LATRINES: 5.0 - 4500.0 (Standard: ≤ 20)

WATER, SANITATION AND HYGIENE

INDICATOR

Do monthly, formal WASH coordination meetings take place between UNHCR, MoH and partners?

Yes



Partners

