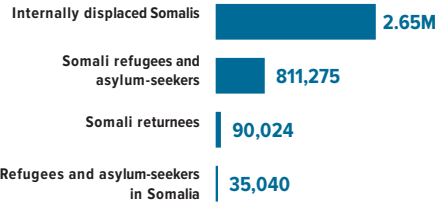




**3.58** MILLION  
**PERSONS OF CONCERN**  
**SOMALIA SITUATION**

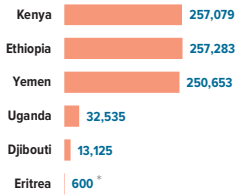


As of July 2019, Somalia was host to 35,040 registered refugees and asylum seekers, mainly from Ethiopia and Yemen.

Over 90,000 Somali refugees have voluntarily returned to Somalia since December 2014 with UNHCR assistance from different countries of asylum including Kenya, Yemen, Djibouti, Libya, Tunisia and Eritrea. In addition, some 42,000 Somalis were monitored as arriving from Yemen since March 2015.

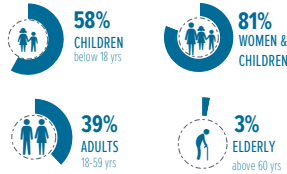
**811,275**  
**SOMALI REFUGEES AND ASYLUM-SEEKERS**

hosted in neighbouring countries

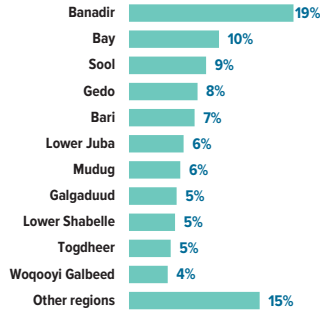


\* Ethiopia as of 31 Aug 2018; Eritrea as of 30 June 2019

**AGE AND GENDER COMPOSITION**  
of refugees and asylum-seekers

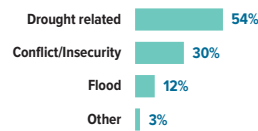


**2.65** MILLION  
**INTERNALLY DISPLACED IN SOMALIA**

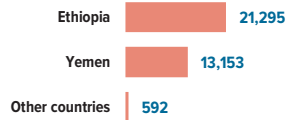


Estimated IDP statistics, Somalia Information Management Working Group, June 2018

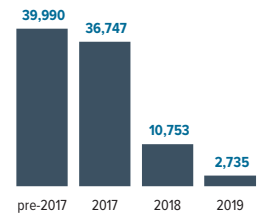
**REASONS FOR DISPLACEMENT**



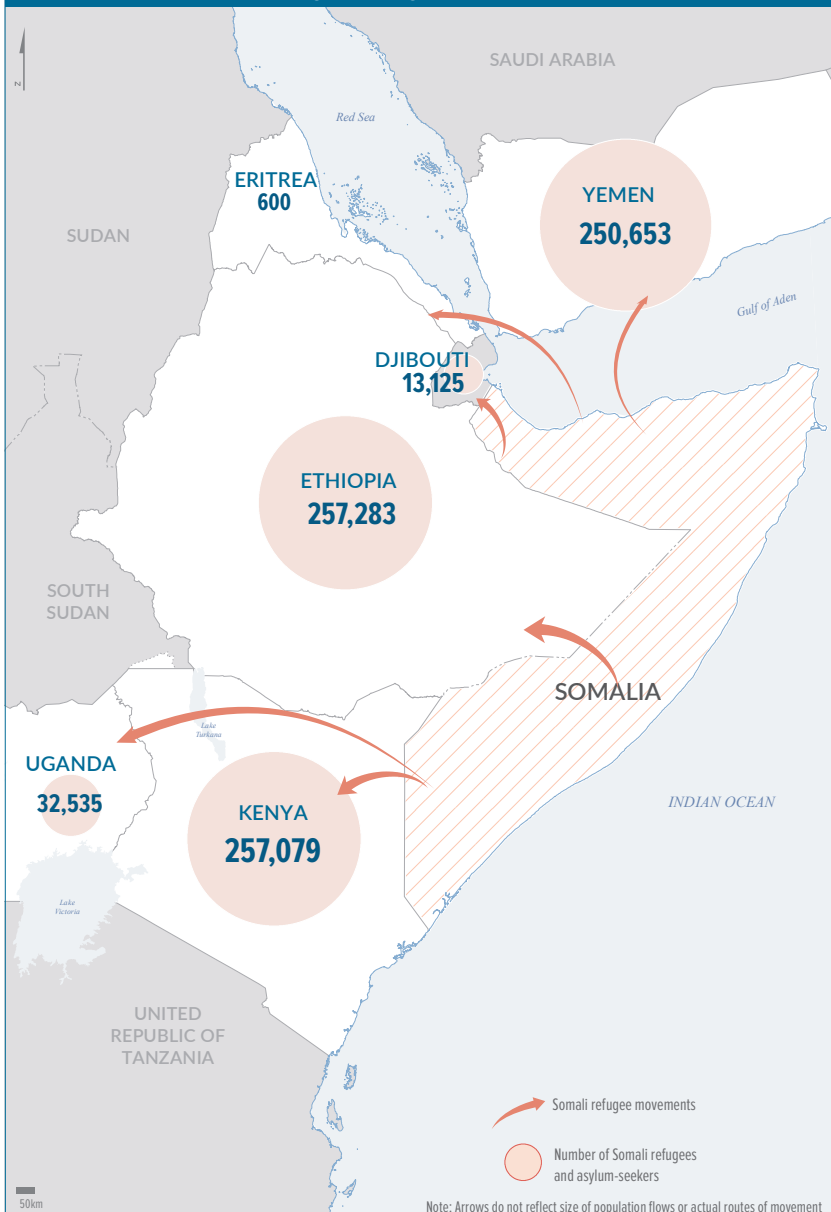
**35,040**  
**REFUGEES AND ASYLUM-SEEKERS**  
hosted in Somalia



**90,225**  
**SOMALI REFUGEE RETURNEES**  
[2014 - 2019]



**SOMALIS displaced into neighbouring countries**



**Population of concern to UNHCR in SOMALIA**

**2.65** MILLION  
**INTERNALLY DISPLACED PERSONS**

**90,225**  
**SOMALI REFUGEE RETURNEES**  
[2014 - 2019]

**35,040**  
**REFUGEES AND ASYLUM-SEEKERS**



Region	IDPs	Refugee returnees	Refugees and asylum-seekers
Awdal	26,000	-	223
Bakool	48,000	-	-
Banadir	497,000	19,336	3,404
Bari	198,000	233	8,703
Bay	272,000	9,485	-
Galgaduud	144,000	13	-
Gedo	207,000	2,954	-
Hiraan	78,000	69	-
Lower Juba	165,000	53,938	7
Lower Shabelle	139,000	162	143
Middle Juba	40,000	1,542	-
Middle Shabelle	51,000	850	13
Mudug	155,000	48	826
Nugaal	60,000	13	1,736
Sanaag	92,000	-	224
Sool	233,000	-	10
Togdheer	126,000	-	405
Woqooyi Galbeed	117,000	559	19,337
Other	-	1,023	9
Unregistered	-	-	-
<b>TOTAL</b>	<b>2,648,000</b>	<b>90,225</b>	<b>35,040</b>

The boundaries and names shown and the designations used on this map do not imply official endorsement or acceptance by the United Nations. Final boundaries between the Republic of Sudan and the Republic of South Sudan and Somalia Figures shown are provisional and subject to change.