



Somalia Rainfall Forecast

Issued: 09 May 2019

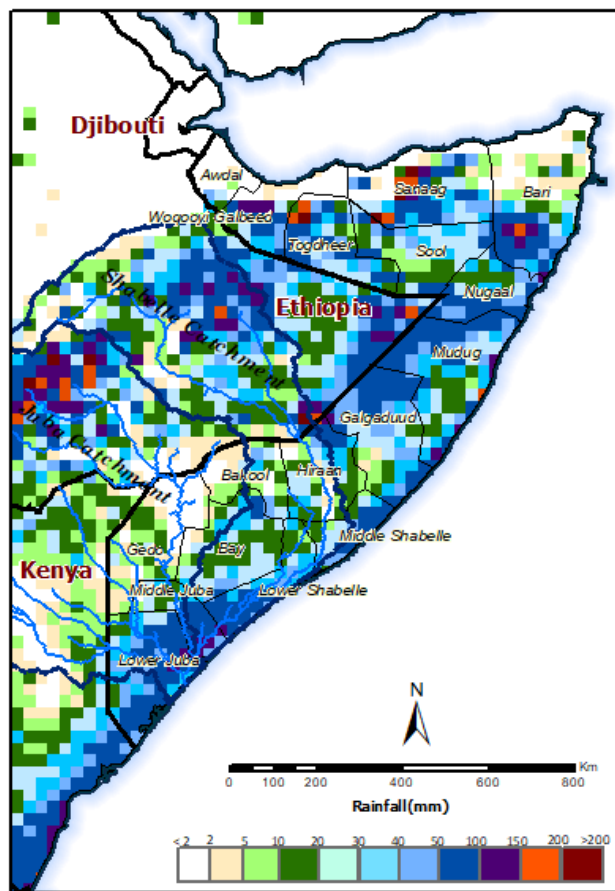
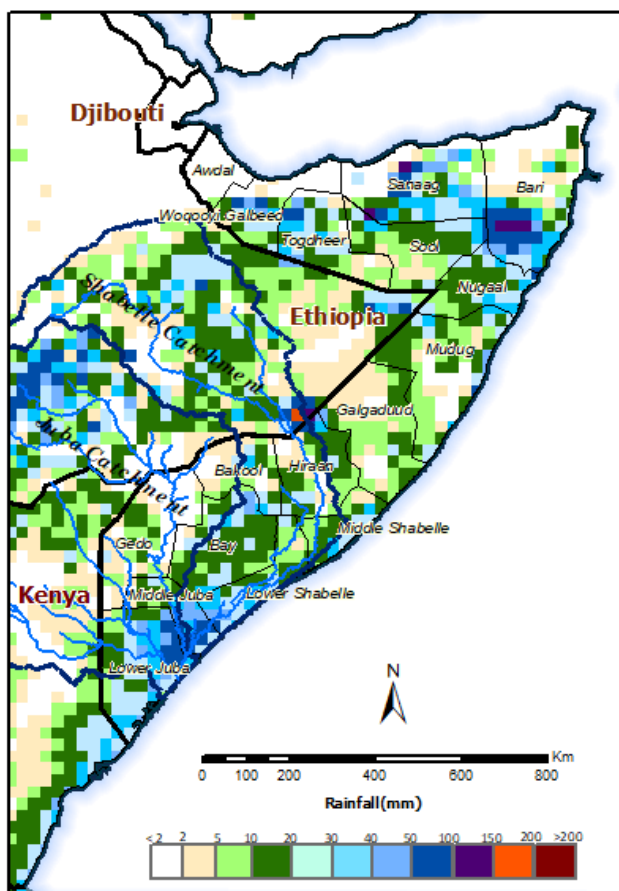
The Gu 2019 rains continued to spread across Somalia over the last few days. Many stations especially in the south have recorded light to moderate rains in the past three days. In the central and northern regions there were scattered rains, while in the Ethiopian highlands moderate to high rains were received over the same period. River levels along Shabelle continued with gradual increase, while the levels along Juba river started to decline after a sharp rise the previous week. Both Shabelle and Juba river levels are currently still below the long term mean for this period of the year.

The cumulative rainfall forecast for the next 3 days (Map 1) indicates light to moderate rains across the entire country, apart from the northern coastal areas where no rains are foreseen. The southern coastal areas are likely to receive moderate to high rainfall in the next three days. The cumulative rainfall forecast for the week which ends on 15 May 2019 shows moderate rains across the country. Along the southern and central coastal areas, and some selected places in Sanaag, Togdheer and Bari regions, the forecast indicates moderate to high rains in the coming week. Moderate to high rains are also foreseen in the Ethiopian highlands (Map 2). As a result, the Juba and Shabelle River levels are expected to slightly increase in the coming week.

Users are advised that this is a forecast and at times there may be discrepancies between forecast and actual amounts of rainfall received. The forecast, observed river levels and rainfall amounts are updated on a daily basis and can be found on this link: <http://frims.faoswalim.org>.

Map 1: 3 day cumulated rainfall forecast (09 - 11 May 2019)

Map 2: 7-day cumulated rainfall forecast (09 - 15 May 2019)



This update is produced by the: FAO - Somalia Water and Land Information Management—SWALIM Project. For more information please contact SO-hydro@fao.org or visit <http://www.faoswalim.org>

FAO SWALIM Technical Partners:



SWALIM is Managed by FAO and Currently Funded by:

