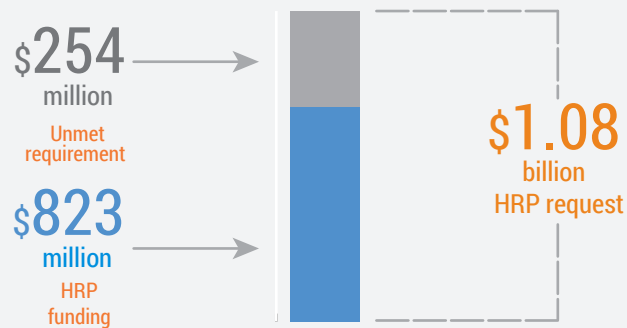


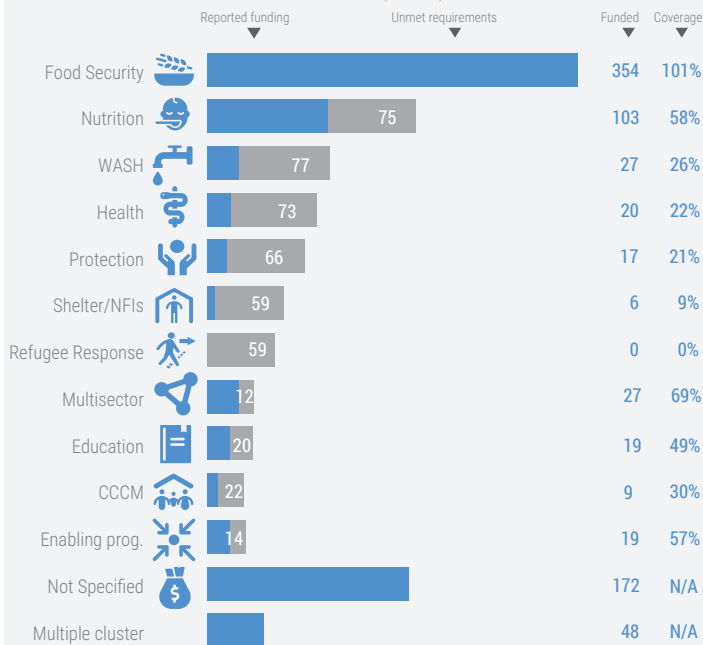
## TOTAL 2019 HUMANITARIAN FUNDING (million \$)



## HUMANITARIAN RESPONSE PLAN 2019 (HRP) (million \$)

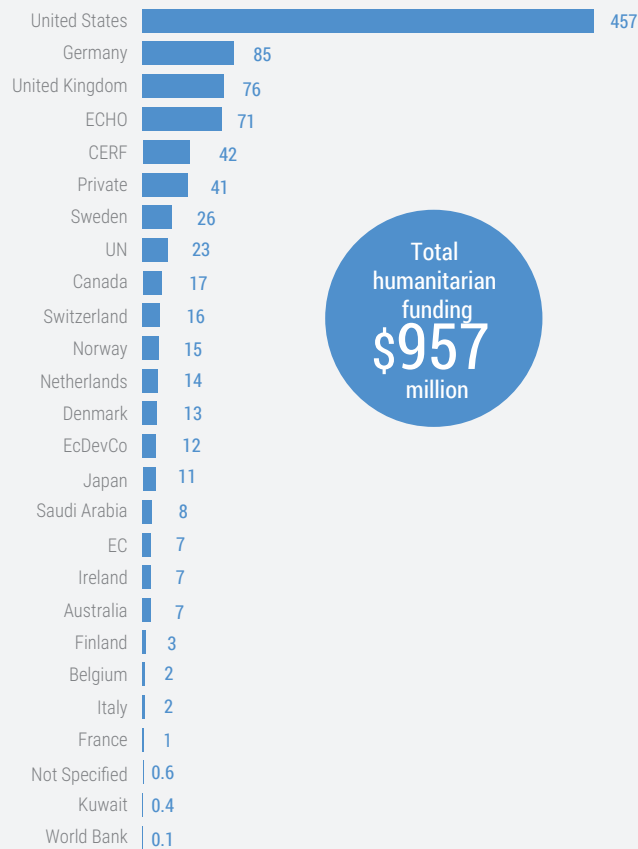


## HRP 2019 FUNDING PER CLUSTER (million \$)



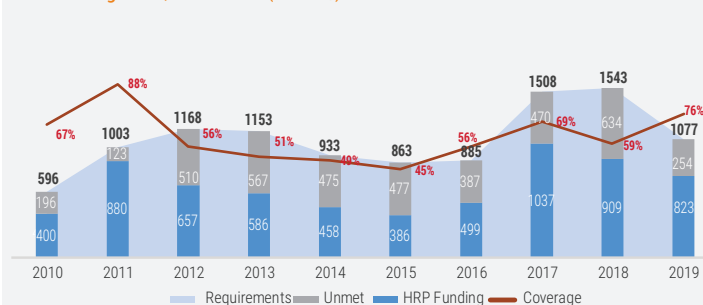
## TOTAL 2019 CONTRIBUTIONS (million \$)

\$56.6 million channeled through the SHF



## FUNDING TREND 2010 - 2019

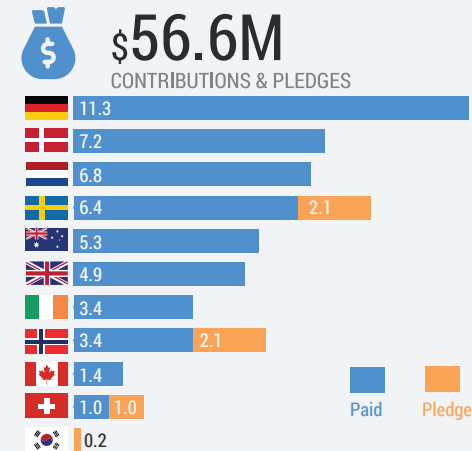
HRP funding trend, 2010-2019 (million \$)



## SOMALIA HUMANITARIAN FUND

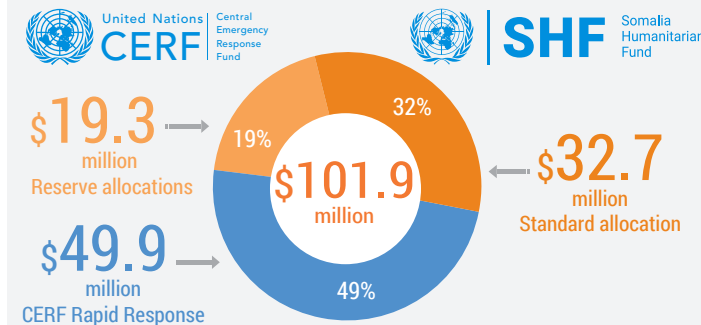


Donor contributions in 2019 (million \$)



## 2019 HUMANITARIAN POOLED FUNDS' ALLOCATIONS (million \$)

BY FUND (million \$)



## BY CLUSTER (million \$, tentative breakdown due to ongoing allocations)

