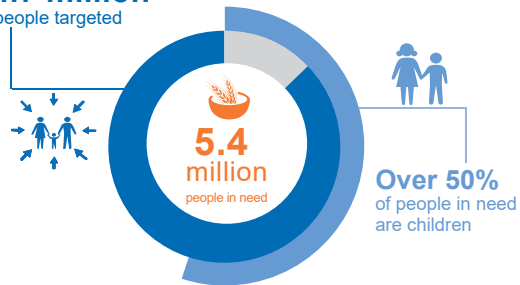


The tropical Cyclone *Sagar* landed in northern of Somalia on 21 May, causing devastation, death and displacement, delivering an entire year's worth of rain in a matter of hours and affecting thousands of people. In addition, continued flash and river flooding in the southern and central areas of the country has compounded the already fragile humanitarian situation due to drought, conflict and marginalization.

4.7 million
people targeted



IMPACT OF FLOODING

Flash and riverine flooding across southern and central Somalia, especially in Hirshabelle and Jubaland states, have led to heavy destruction of property, humanitarian inaccessibility and mass displacement. The floods have also raised serious concerns regarding a subsequent outbreak of water- or vector-borne disease.



Effects of flooding

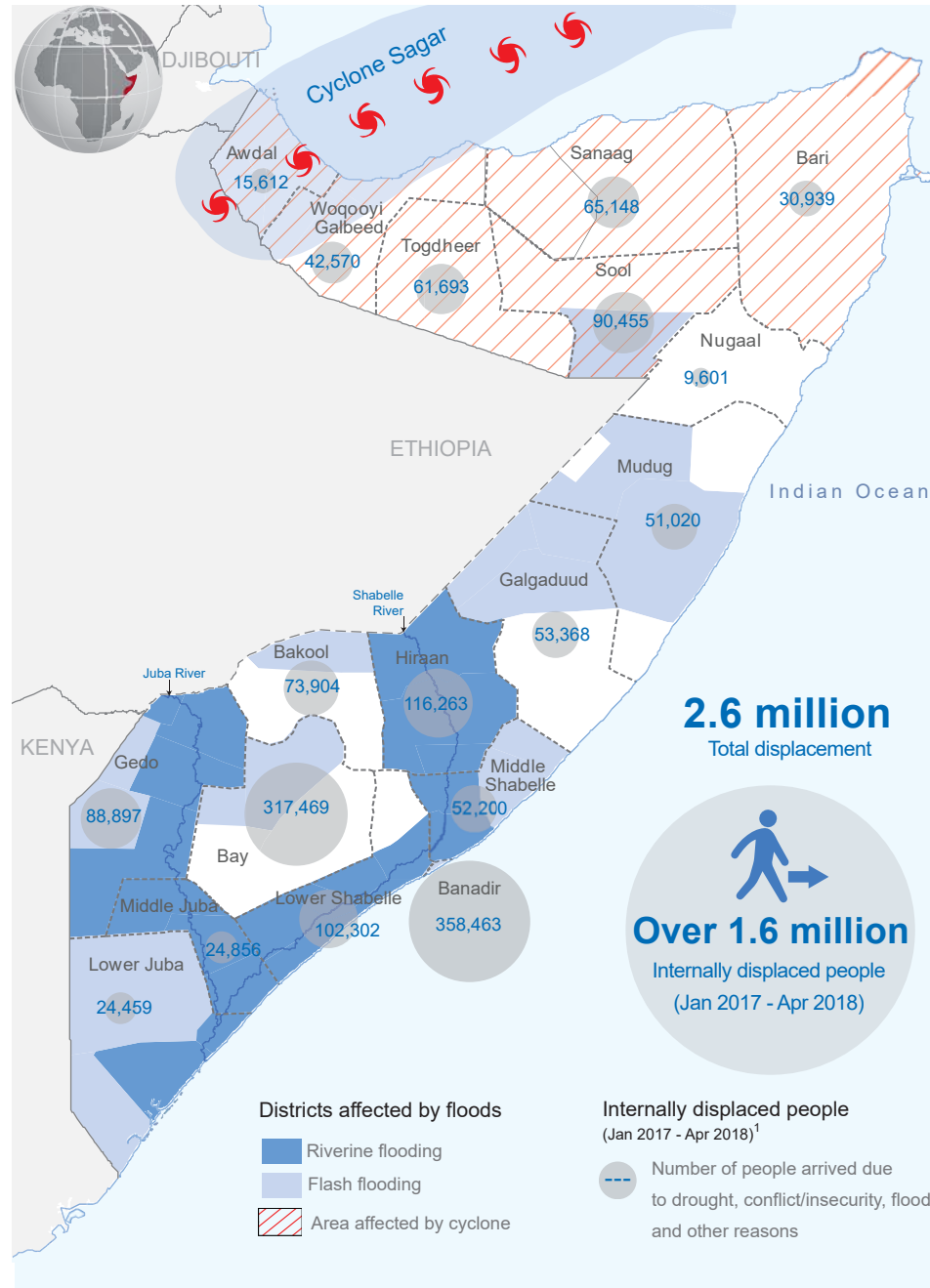
In Somaliland & Puntland

- 168,000 People affected in Somaliland
- 21,600 People affected in Puntland
- 52 People killed
- 70 people missing
- 33 schools affected
- Shelter destroyed
- 277 hectares of farmland destroyed

Across the country

- Spike in diseases (Malaria, Measle & AWD/cholera)
- Thousand of livestock killed
- Key infrastructures was damaged (roads, fishing boats, houses, water wells, boreholes, medical facilities)
- Thousand of hectares of farmland destroyed

For more information please see the Bulletin link - <https://bit.ly/2J8RvCg>



HUMANITARIAN RESPONSE

Humanitarian partners have stepped response to people affected by cyclone *Sagar*, providing food and access to WASH and hygiene facilities. The flood response also continued, with partner strengthening logistics capacity to reach isolated areas and repair of river breakages along the Shabelle River.

Cluster flood response as of 31 May 2018

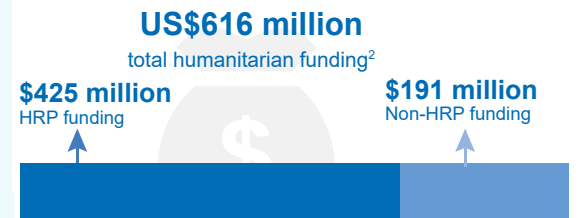
CCCM	121,000	Nutrition	186,000
Education	37,000	Protection	XX
Food Security	794,000	Shelter	81,000
Health	390,000	WASH	300,000
Logistics	Deployed a helicopter in support of humanitarian operation		

More response is being done by states and local communities, these include;

- Establishing response hubs
- Supporting repair of damaged facilities
- Conducting rescue operations

FUNDING

The 2018 Humanitarian Response Plan (HRP), which calls for \$1.5 billion in aid, is only 28 per cent funded. More resources are required to support on-going operations.



The boundaries and names shown and the designations used on this map do not imply official endorsement or acceptance by the United Nations.