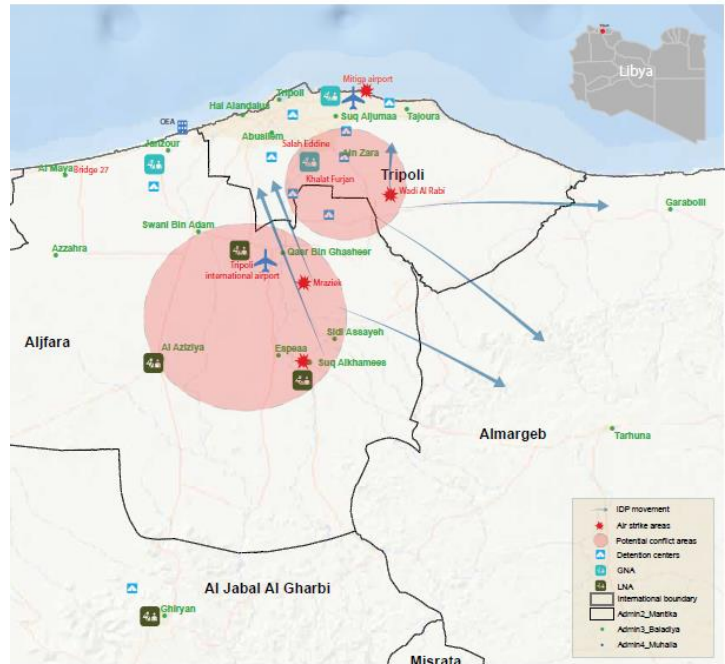






## Highlights

- A further escalation of violence in and around Tripoli led to an upsurge in displacement, with 1,675 new displacements reported over the last 24 hours. This brings the current total of IDPs to 4,500, and numbers are expected increase further, should violence prevail.
- Humanitarian partners are extremely concerned with regards to the disproportionate and indiscriminate use of explosive weapons in highly inhabited areas and urban settings, and call on parties to the conflict to protect civilian infrastructure, such as schools, medical facilities and power stations.
- The humanitarian community is further alarmed by reports that emergency service providers are often unable to reach civilians in need, and in some cases reported to have been targeted by parties to the conflict.



 <p><b>4,500</b> individuals have been displaced since the onset of fighting, noting that 1,675 of them were displaced in the last 24 hours</p>	 <p><b>500,000+</b> children living in Tripoli are at immediate threat, and tens of thousands more in other areas could be potentially affected</p>	 <p><b>Concerns</b> remain for the protection of civilians trapped in areas close to the frontlines, unable to flee violence and to access services</p>	 <p><b>\$190m</b> is the current funding gap against the HRP, while additional funding for the Rapid Response Mechanism is urgently needed</p>
--	--	--	---

## Situation Overview

The security situation in and around Tripoli remained volatile, with continued armed clashes reported on the Wadi al-Rabie, the Qasr Ben Gashir and the Ain Zara axes, and airstrikes from both sides in Souq al-Khamis and al-Shwayrif.

The further escalation of violence has led to an upsurge in displacement, with 1,675 new displacements reported over the last 24 hours. The total number of IDPs now amounts to nearly 4,500 individuals, and displacement number are likely to increase further, should violence prevail.

Severe protection concerns prevail, as the escalation of violence is taking an increasing toll on the civilian population. Many civilians in Libya and detained refugees and migrants are currently unable to flee the violence due to their proximity to the conflict. Over 500,000 children living in Tripoli are at immediate threat and tens of thousands more in other areas could become potentially affected. The ability of emergency services to access civilians in need remains restricted, including the Libyan entities who are evacuating families from conflict-affected areas in southern Tripoli, such as Hay Al-Kayekh, Wadi Al-Rabee, Ain Zara,

Qasr Ben Ghashir, Al-Naqlia and Azizia. Emergency service providers have reported incidents where they were not permitted by armed actors to access areas with civilians in need, and incidents where they felt they were targeted by armed forces. Reports were received of two aid workers being killed whilst on duty.

Humanitarian partners are further extremely concerned of the disproportionate and indiscriminate use of explosive weapons in highly inhabited areas and urban settings, and call on parties to the conflict to protect civilian infrastructure, such as water and sanitation installations, schools, medical facilities, humanitarian warehouses, and power stations.

In light of the current insecurity in Libya's capital, UNHCR relocated more than 150 refugees from the Ain Zara detention centre in south Tripoli to UNHCR's Gathering and Departure Facility on 09 April. This relocation of detained refugees was the first relocation since the recent escalation of violence.

The humanitarian community continues to work to support the people of Libya, and the Humanitarian Coordinator, on 9 April, urged all parties to the conflict in a statement ([here](#)) to guarantee unhindered humanitarian access, unconditional medical evacuations and the protection and safety of civilians caught up in conflict zones.

## Humanitarian Response

---

Humanitarian partners have prepositioned aid supplies in multiple locations throughout Tripoli to respond to humanitarian needs, provided safe access can be granted. This includes food stocks to support an additional 80,000 people for a period of two weeks, pre-positioned emergency medical supplies and trauma kits, in addition to previously supplies medical items to eleven health facilities, and shelter and non-food items assistance to support 15,000 families across Libya.



### Food Security

---

- On 09 April, WFP delivered two-week dry ration for 500 Persons of Concerns to the Gathering and Departure Facility under an agreement with UNHCR. The same day, some 100 households in Tajoura were provided with food, (as well as NFIs.)
- Through the Rapid Response Mechanism, WFP's food provisions will be delivered and distributed to 100 households in Ain Zara in the coming days.
- On 09 April, the Food Security Sector called for an *ad-hoc* meeting to discuss the provision of food assistance at the detention centers in Qasr Ben Ghasheer, Sabaa and Tajoura.



### Health

---

- The health sector has collected data on civilian casualties from ten different sites and verified those numbers with focal points. As per those numbers, a total of eleven civilian casualties could be confirmed and verified, five of them dead, including an ambulance driver who was killed today. This is the third health worker to be killed since the flare-up of the conflict. These numbers may not capture all civilian casualties, and do not include numbers of deceased or injured fighter.



### Protection

---

- A UNHCR Helpline is providing information to IDPs on available shelters identified by local authorities. Additionally, the DRC protection team is assisting families stuck in unsafe areas with referral services to the collective sites and to emergency service providers who are facilitating evacuations from affected areas.

**Mine Action:**

- As part of their mine risk education efforts, UNMAS provided WFP with 500 Explosive Hazard Risk Awareness leaflets/booklets from the Libyan Mine Action Center for inclusion in food packages in conflict-affected areas. The information provided warns of the dangers posed by explosive hazards and references phone numbers that can be called, in case an explosive item is found.
- 'Free Fields Foundation' (3F) is providing additional materials for distribution to at-risk populations in the coming days. 3F is conducting Explosive Hazard Risk Awareness through Social Media (Facebook and Twitter), and is planning to broadcast Risk Awareness messages via Radio.

**Child Protection:**

- The Child Protection sub-sector received reports that the Qasr bin Ghasheer Detention Center is facing food shortages and is in need of hygiene items. If a relocation of detainees were to take place, TDH is assessing its capacity to provide support to the 150+ children, including 16 infants. In addition, TDH has been informed that there are approximately 15 pregnant and lactating women, including several women near term who are expecting to deliver and will require further support.
- In the Tajoura Detention Center camp the food shortages and a need for items has been reported, and the sub-sector is working with WFP to see what options exist to support the population. As per the information available, there are 22 children inside the detention centre, including ten infants, as well as ten pregnant and lactating women.

**Gender-based Violence:**

- UNFPA has assessed and identified the capacity of the Tripoli Medical Centre and the central hospital to provide clinical management of rape services. Plans are underway to supply post rape care kits in the two health facilities, including a deployment of social workers.
- IRC, upon conducting rapid assessment, is deploying psycho-social support /gender-based violence case workers and their medical team to several locations, including Ain Zara, the PHC Mheemed Mogara in Tariq Shouk close to the University camp, Al Farnaj and the female student Hostel.
- CESVI continues to provide gender-based violence case management services to refugees and asylum seekers at the UNHCR community development centre 2 (Guriji area) and the UNHCR community development 1 (Salah al- Din area) though both, case workers and beneficiaries who are facing movement challenges to the centres due to the ongoing conflict.

**Shelter and NFIs**

---

- The shelter and NFI sector is currently collecting information about potential and/or existing collective centers in Tripoli. A map displaying the warehouses of existing partners is currently under preparation, and will be shared once completed.
- Partners with a field presence were able to assess a collective center in Ain Zara, where a need for NFIs has been assessed.

**Logistics**

---

- According to information received from partners, Tripoli port remains operational and commercial road transport inside Tripoli is available. The request form is posted online and can be accessed [here](#).
- UNHAS is working in coordination with all parties in order to guarantee the safety and security of crew and passengers. Conditions to perform a safe flight will be evaluated prior to departure. As such, cancellations, delays and disruption in the current schedule are to be expected.

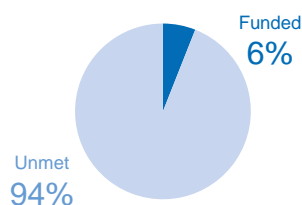
## Education

- The education sector continues to follow-up on the overall numbers of schools impacted by the conflict. Due to the decentralization by the MOE to affected municipalities, it remains difficult to obtain such numbers. Confirmed information has been received, that 30 families in Azzara were displaced to the Azzhara Secondary School.

## Funding

Libya Humanitarian Response Plan 2019

**US\$202 million** requested



The Humanitarian Country Team will continue to review their capacity to respond particularly in view of the historic underfunding of the humanitarian response in Libya. The Libya Humanitarian Response Plan is only **6 per cent** funded, with a **current funding gap of \$190m**, and additional funding for the Rapid Response Mechanism is urgently needed.

For further information, please contact:

**Niels Scott**, Head of OCHA Libya, [scott2@un.org](mailto:scott2@un.org)

For more information, please visit [www.unocha.org](http://www.unocha.org) and [www.reliefweb.int](http://www.reliefweb.int).