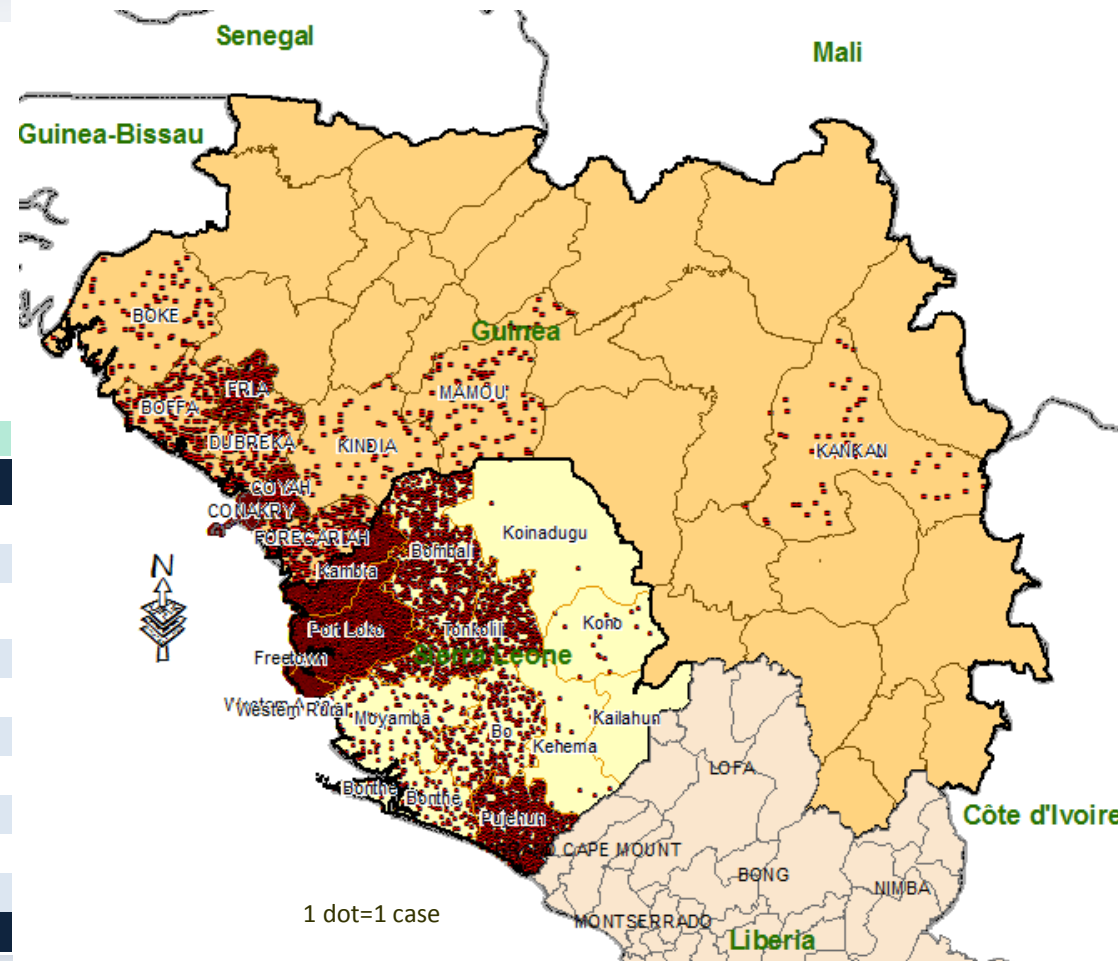


# Cholera in Sierra Leone and Guinea ( Situation as of 01 September 2012)

**Sierra Leone:** A total of **15 308** cases and **249** deaths (CFR: **1.6%**) reported from 12 out of 13 districts.  
**Guinea:** A total of **5 523** cases and **105** deaths (CFR: **1.9%**) reported from 10 districts out of 38 districts.  
**Liberia:** No Cholera cases reported from Liberia after 25 March 2012.

Geographic distribution of cholera cases in Sierra Leone and Guinea



## Highlight

**Sierra Leone:** The Ministry of Health in Sierra Leone declared an outbreak of cholera in 12 out of 13 districts: Bo, Bombali, Bonthe, Kambia, Kono, Moyamba, Port Loko, Pujehun, Tonkolili, Kenema, Koinadugu and Western Area (Freetown included as of 01 August). No Cholera cases reported from Kailahun district.

As of the 01 September 2012, a total of **15 308** cases with **249** deaths (CFR=1.6%) had been reported.

On 1 September 2012, Western Area continued to report the highest number of cases (95 cases) followed by Bombali and Moyamba (20 cases each), Tonkolili (14 cases) and Pujehun (10 cases).

**Guinea:** Between 02 February and 01 September 2012, **5 523** cases and **105** deaths (CFR: 1.9%) were reported from 10 districts.

### Sierra Leone: cases and deaths by district

District	Cases	Deaths	CFR%
Western Area	7622	84	1.1
Port Loko	3140	56	1.8
Kambia	1262	31	2.5
Pujehun	807	11	1.4
Bo	320	7	2.2
Bombali	949	15	1.6
Moyamba	153	11	7.2
Tonkolili	755	31	4.1
Bonthe	142	3	2.1
Kono	63	0	0.0
Kenema	90	0	0.0
Koinadugu	5	0	0.0
<b>Total</b>	<b>15308</b>	<b>249</b>	<b>1.6</b>

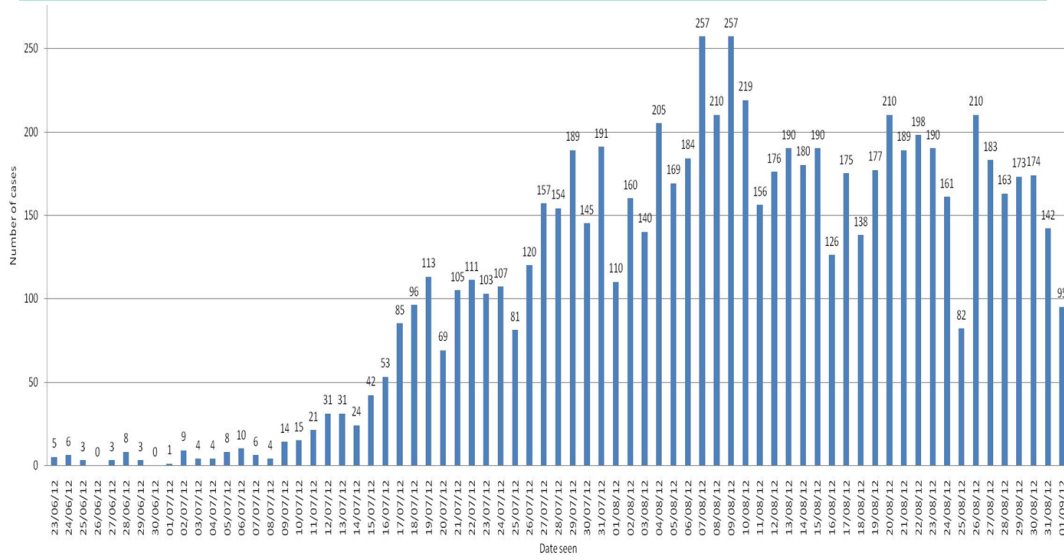
### Guinea: cases and deaths by district

Districts	Cases	Deaths	CFR%
Conakry	3630	23	0.6
Coyah	481	7	1.5
Forecariah	328	28	8.5
Fria	290	8	2.8
Boffa	219	11	5.0
Dubréka	215	5	2.3
Mamou	107	10	9.3
Boké	125	5	4.0
Kindia	75	3	4.0
Kankan	53	5	9.4
<b>TOTAL</b>	<b>5523</b>	<b>105</b>	<b>1.9</b>

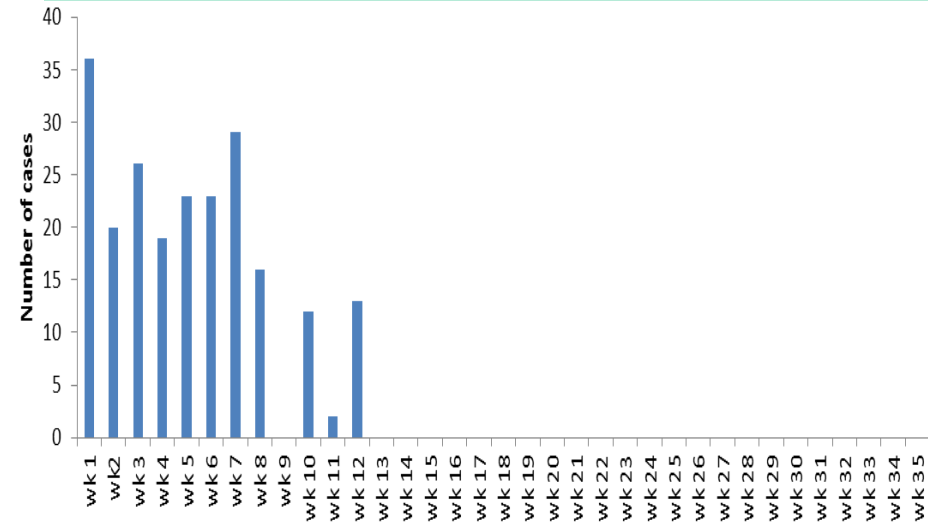
## Action taken

WHO in collaboration with partners is supporting Ministries of Health of these countries in the area of Coordination; Case management and logistics; Surveillance and data management and Social mobilization and WASH. The Cholera Control and Command Centre (C4) has been established at the Sierra Leone WHO offices using the Zimbabwe model. The first C4 meeting was held on 28 August 2012. Two senior staff from WHO Regional Office will join the team by Tuesday 4 August 2012 to support coordination response activities and two experts from WHO HQ (a senior epidemiologists and a logistician) arrived in Freetown on 30 August 2012 to work with the cholera response team in C4. Three cholera experts from International Centre for Diarrhoeal Disease Research, Bangladesh (ICDDR,B) will arrive in Freetown between 6 to 9 September 2012.

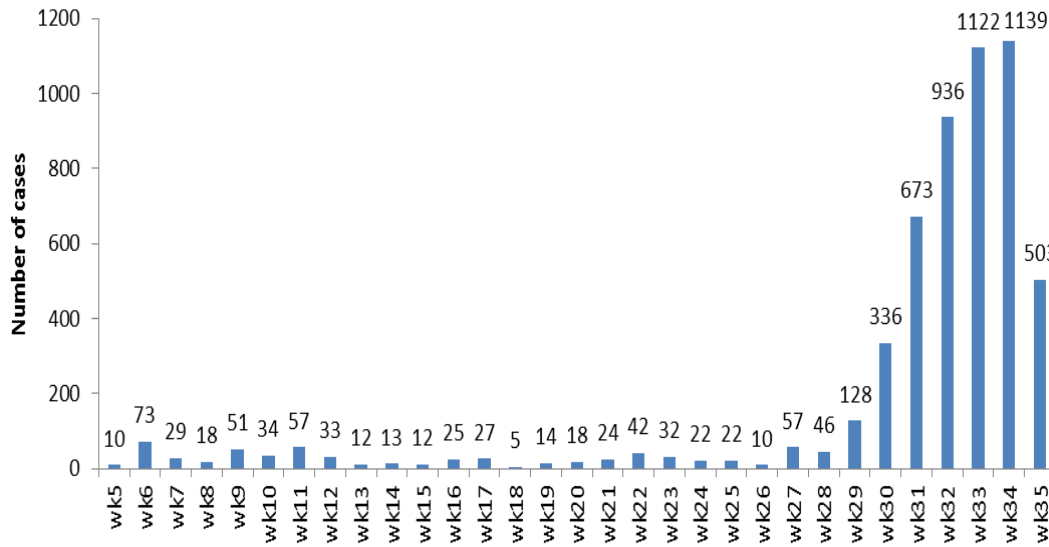
**Sierra Leone:** Epidemic curve of Cholera in Western Area, 23<sup>rd</sup> June – 1<sup>st</sup> September



**Liberia:** Epidemic curve of Cholera in Liberia



**Guinea:** distribution of cases by week



**Guinea:** weekly distribution of cases by district

