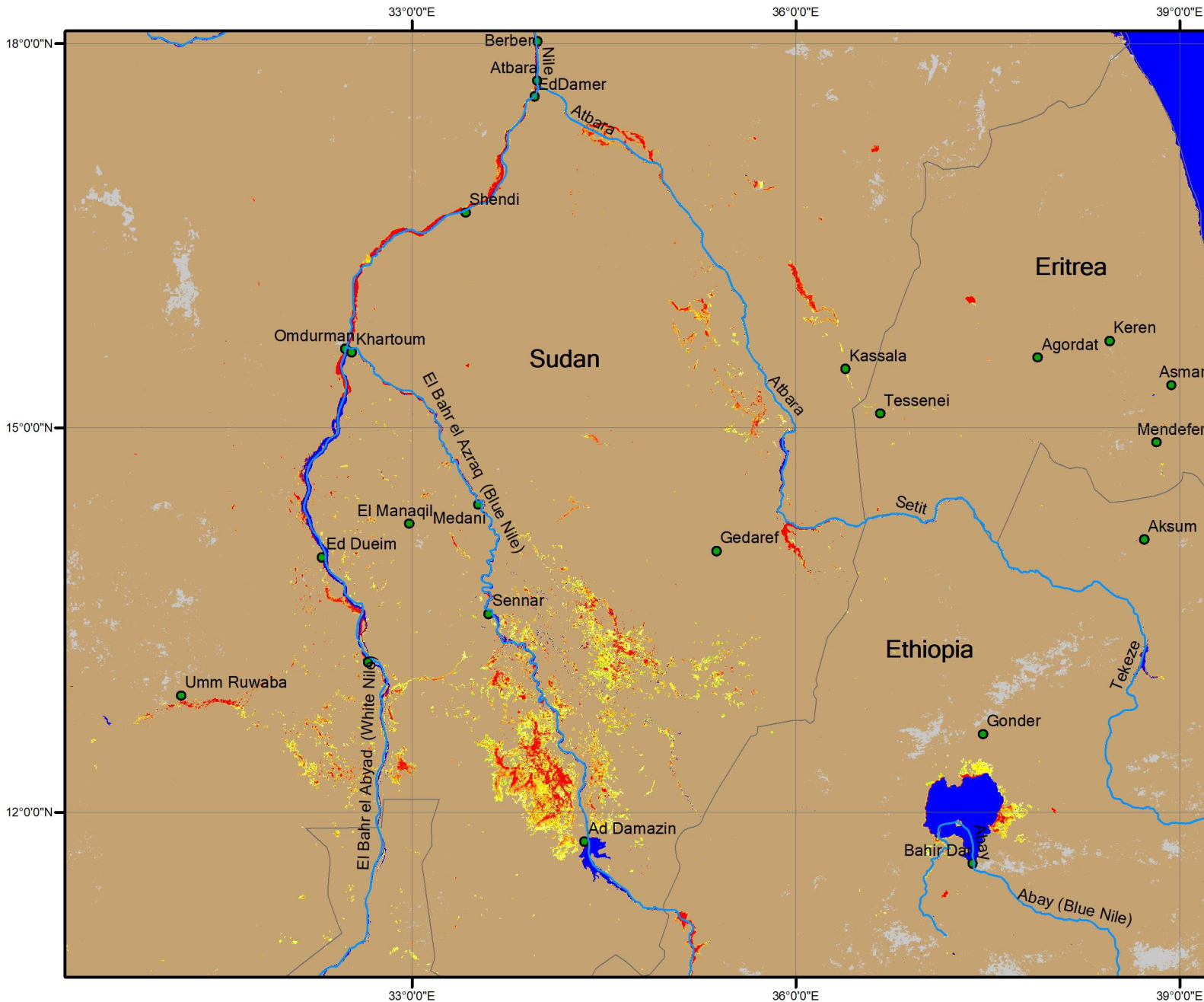
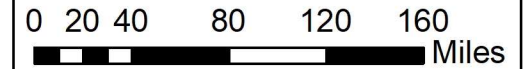


# Suomi-NPP&NOAA-20/VIIRS Daily Composited Flood Map in Sudan

Maximal flood extent composition from Sep 02nd to 06th, 2020



## Map Information



## Legend

- cities
  - river/lake
  - country border
  - Snow
  - Shadow
  - No data
  - Cloud
  - Normal open water
  - Ice
  - Supra-snow/ice water
  - Land Floodwater fraction (%)
- 



## Data Source

**Satellite Imagery**  
 Suomi-NPP/VIIRS  
 NOAA-20/VIIRS

**GIS data**  
 Administrative boundary  
 and cities: GADM

## Description

This flood map is composited from SNPP/VIIRS and NOAA-20/VIIRS data from Sep 02nd to 06th, 2020, which reflects the flood extent under clear-sky coverage during that period in Sudan. Water fraction means open water percentage in a VIIRS 375-m pixel.