

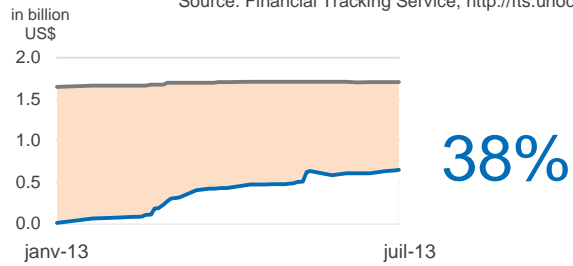
SAHEL CRISIS 2013: FUNDING STATUS as of 26 July 2013



All figures in US\$

Source: Financial Tracking Service, <http://fts.unocha.org>

REQUIREMENT US\$ 1.71 billion
FUNDING US\$ 650 million
UNMET REQUIREMENT US\$ 1.06 billion

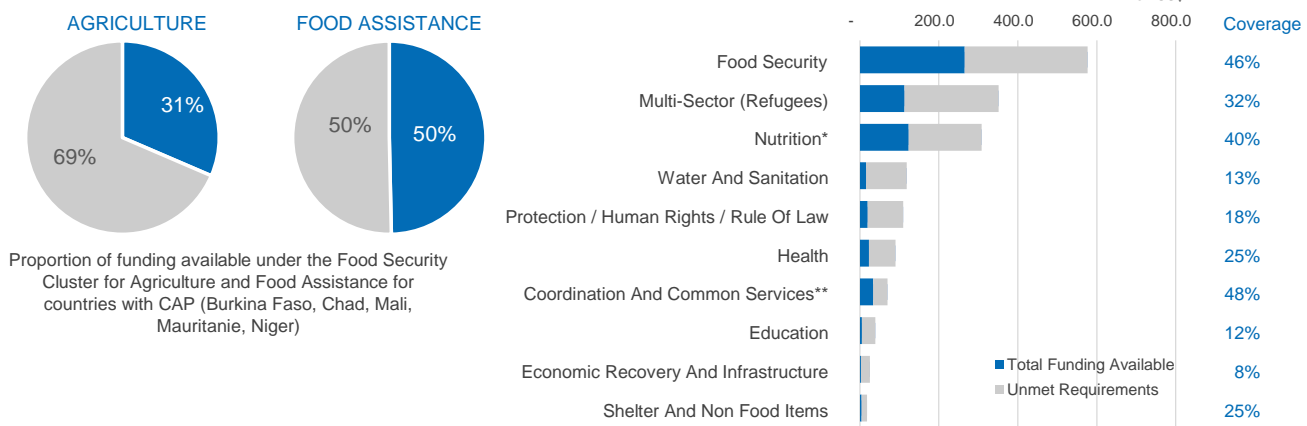


5 CONSOLIDATED APPEALS

- [Burkina Faso 2013](#)
- [Chad 2013](#)
- [Mauritanie 2013](#)
- [Niger 2013](#)
- [Mali 2013](#)

Total Population Affected or at Risk: 10.3 million
 Amount Requested per Person: US\$ 166

FUNDING STATUS PER SECTOR



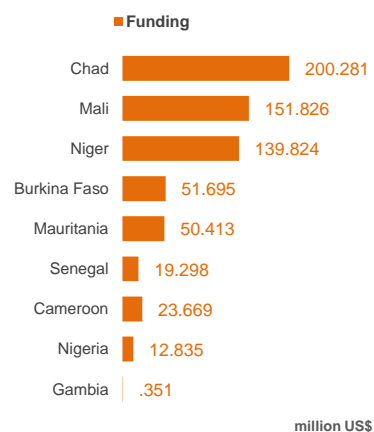
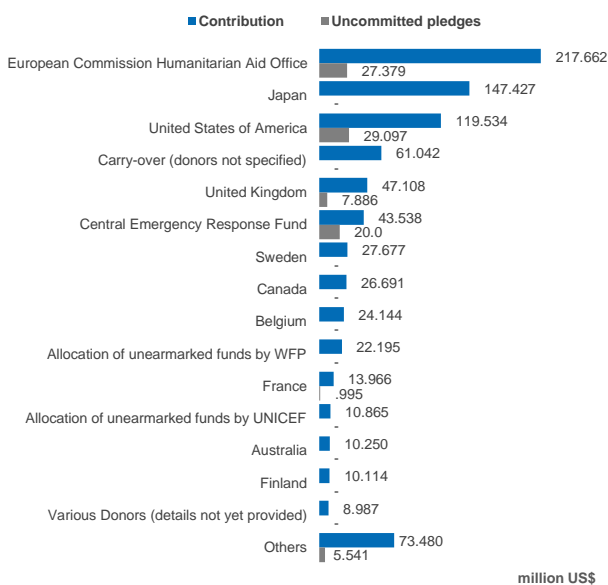
* For Senegal, the requirements and funding in this section include both health and nutrition. In Gambia, the breakdown is: Health \$3,132,861 and Nutrition \$3,355,000. In Cameroon: Health \$6,622,929 and Nutrition \$9,069,959. In Nigeria, Nutrition \$ 17,951,321 and in Senegal, Health \$17,570,520.
 ** For ease of presentation, Coordination, Logistics, and Emergency Telecommunications have been combined in this section. For details on projects in these clusters, please see the individual appeal pages at: <http://fts.unocha.org/pageloader.aspx?page=emerg-emergencies§ion=CE&year=2013>

of DONOR COUNTRIES: 49

For countries included in the Sahel strategy, namely Niger, Chad, Burkina Faso, Mauritania, Mali, Cameroon, Nigeria, Senegal and The Gambia

DONOR COUNTRIES

DESTINATION COUNTRIES



of RECIPIENT ORGANISATIONS: 143

For agencies in the following appeal(s): Burkina Faso 2013, Chad 2013, Mali 2013, Mauritania 2013 and Niger 2013,

SAHEL CRISIS 2013:
Funding per Country as of 26 July 2013



| Countries | Overall Requirements US\$ | Total Funding Available US\$ | % Funded | Unmet Requirements US\$ | Additional commitments (outside appeals) US\$ | Total funding in and out of Appeals US\$ | Pledges US\$ |
|--|------------------------------|------------------------------------|------------|----------------------------|---|--|-------------------|
| | A | B | C=B/A | D=A-B | E | F=B+E | G |
| Burkina Faso | 138,977,186 | 51,695,434 | 37% | 87,281,752 | 20,419,807 | 72,115,241 | - |
| Chad | 509,937,289 | 200,280,957 | 39% | 309,656,332 | 30,815,292 | 231,096,249 | 16,497,260 |
| Mali | 476,926,521 | 151,825,524 | 32% | 325,100,997 | 107,845,999 | 259,671,523 | 42,400,899 |
| Mauritania | 106,793,308 | 50,413,498 | 47% | 56,379,810 | 7,249,714 | 57,663,212 | 4,000,000 |
| Niger | 355,277,959 | 139,823,683 | 39% | 215,454,276 | 38,853,506 | 178,677,189 | 28,000,000 |
| Gambia | 14,993,361 | 351,144 | 2% | 14,642,217 | - | 351,144 | - |
| Senegal | 53,603,864 | 19,297,894 | 36% | 34,305,970 | 1,269,061 | 20,566,955 | - |
| Cameroon | 23,777,178 | 23,668,945 | 100% | 108,233 | 16,212,619 | 39,881,564 | - |
| Nigeria | 22,031,321 | 12,834,907 | 58% | 9,196,414 | 7,245,448 | 20,080,355 | - |
| Regional food security coordination and support | 5,457,585 | - | 0% | 5,457,585 | - | - | - |
| Regional funding | - | - | - | - | - | - | - |
| Total | 1,707,775,572 | 650,191,986 | 38% | 1,057,583,586 | 229,911,446 | 880,103,432 | 90,898,159 |

SAHEL CRISIS 2013: Funding per Cluster by Country as of 26 July 2013



Based on Total Humanitarian Funding (In & Out of Appeal)

Source: Financial Tracking Service, <http://fts.unocha.org>

| Country Sector/Cluster | Requirement (US\$) | Funding (US\$) | Coverage | Unmet Requirement (US\$) |
|---|-----------------------|--------------------|------------|-----------------------------|
| Burkina Faso | 138,977,186 | 51,695,434 | 37% | 87,281,752 |
| Multi-Sector (Refugees) | 53,442,609 | 18,170,789 | 34% | 35,271,820 |
| Nutrition* | 32,845,903 | 10,506,091 | 32% | 22,339,812 |
| Food Security | 30,158,592 | 14,851,548 | 49% | 15,307,044 |
| Water And Sanitation | 6,338,827 | 2,382,539 | 38% | 3,956,288 |
| Health | 5,728,238 | 1,276,535 | 22% | 4,451,703 |
| Economic Recovery And Infrastructure | 4,518,195 | - | 0% | 4,518,195 |
| Protection / Human Rights / Rule Of Law | 3,162,251 | 1,202,911 | 38% | 1,959,340 |
| Education | 1,443,430 | 1,597,089 | 111% | - |
| Coordination And Common Services** | 1,339,141 | - | 0% | 1,339,141 |
| Chad | 509,937,289 | 200,280,957 | 39% | 309,656,332 |
| Food Security | 189,447,264 | 141,548,589 | 75% | 47,898,675 |
| Multi-Sector (Refugees) | 158,893,426 | 22,243,659 | 14% | 136,649,767 |
| Nutrition* | 38,997,946 | 14,259,187 | 37% | 24,738,759 |
| Health | 29,890,274 | 3,111,000 | 10% | 26,779,274 |
| Protection / Human Rights / Rule Of Law | 27,556,054 | 1,243,629 | 5% | 26,312,425 |
| Coordination And Common Services** | 26,159,016 | 11,148,518 | 43% | 15,010,498 |
| Water And Sanitation | 20,106,478 | 3,206,166 | 16% | 16,900,312 |
| Economic Recovery And Infrastructure | 12,670,691 | - | 0% | 12,670,691 |
| Education | 6,216,140 | - | 0% | 6,216,140 |
| Mali | 476,926,521 | 151,825,524 | 32% | 325,100,997 |
| Food Security | 169,451,402 | 60,916,309 | 36% | 108,535,093 |
| Nutrition* | 80,437,059 | 22,570,797 | 28% | 57,866,262 |
| Protection / Human Rights / Rule Of Law | 71,455,570 | 16,495,083 | 23% | 54,960,487 |
| Water And Sanitation | 62,279,002 | 7,273,698 | 12% | 55,005,304 |
| Health | 34,503,641 | 11,063,977 | 32% | 23,439,664 |
| Education | 21,552,538 | 3,269,044 | 15% | 18,283,494 |
| Coordination And Common Services** | 19,520,733 | 9,776,945 | 50% | 9,743,788 |
| Shelter And Non Food Items | 17,726,576 | 4,366,666 | 25% | 13,359,910 |
| Mauritania | 106,793,308 | 50,413,498 | 47% | 56,379,810 |
| Multi-Sector (Refugees) | 62,339,074 | 30,836,895 | 49% | 31,502,179 |
| Food Security | 14,585,976 | 2,816,732 | 19% | 11,769,244 |
| Nutrition* | 7,658,352 | 2,963,838 | 39% | 4,694,514 |
| Coordination And Common Services** | 6,174,397 | 4,491,646 | 73% | 1,682,751 |
| Water And Sanitation | 5,024,115 | 994,764 | 20% | 4,029,351 |
| Health | 3,724,423 | 619,273 | 17% | 3,105,150 |
| Economic Recovery And Infrastructure | 3,058,656 | - | 0% | 3,058,656 |
| Education | 2,203,980 | - | 0% | 2,203,980 |
| Protection / Human Rights / Rule Of Law | 2,024,335 | 158,937 | 8% | 1,865,398 |

SAHEL CRISIS 2013: Funding per Cluster by Country as of 26 July 2013



Based on Total Humanitarian Funding (In & Out of Appeal)

Source: Financial Tracking Service, <http://fts.unocha.org>

| Country Sector/Cluster | Requirement (US\$) | Funding (US\$) | Coverage | Unmet Requirement (US\$) |
|---|-----------------------|--------------------|-------------|-----------------------------|
| Niger | 355,277,959 | 139,823,683 | 39% | 215,454,276 |
| Food Security | 130,520,933 | 26,690,107 | 20% | 103,830,826 |
| Nutrition* | 91,006,898 | 51,373,242 | 56% | 39,633,656 |
| Multi-Sector (Refugees) | 74,195,398 | 41,162,898 | 55% | 33,032,500 |
| Water And Sanitation | 19,477,236 | 1,916,232 | 10% | 17,561,004 |
| Health | 16,304,531 | 6,751,302 | 41% | 9,553,229 |
| Coordination And Common Services** | 12,892,821 | 8,033,848 | 62% | 4,858,973 |
| Economic Recovery And Infrastructure | 4,729,134 | 2,106,819 | 45% | 2,622,315 |
| Protection / Human Rights / Rule Of Law | 3,655,963 | - | 0% | 3,655,963 |
| Education | 2,495,045 | - | 0% | 2,495,045 |
| Cameroon | 23,777,178 | 23,668,945 | 100% | 108,233 |
| Nutrition* | 15,692,888 | 3,943,453 | 25% | 11,749,435 |
| Water And Sanitation | 3,005,545 | - | 0% | 3,005,545 |
| Food Security | 2,738,677 | 3,556,852 | 130% | - |
| Education | 1,660,068 | - | 0% | 1,660,068 |
| Protection / Human Rights / Rule Of Law | 380,000 | - | 0% | 380,000 |
| Economic Recovery And Infrastructure | 300,000 | - | 0% | 300,000 |
| Nigeria | 22,031,321 | 12,834,907 | 58% | 9,196,414 |
| Nutrition* | 17,951,321 | 11,762,663 | 66% | 6,188,658 |
| Food Security | 3,000,000 | 995,380 | 33% | 2,004,620 |
| Protection / Human Rights / Rule Of Law | 1,080,000 | 76,864 | 7% | 1,003,136 |
| Senegal | 53,603,864 | 19,297,894 | 36% | 34,305,970 |
| Food Security | 31,430,160 | 13,708,898 | 44% | 17,721,262 |
| Nutrition* | 17,570,520 | 5,588,996 | 32% | 11,981,524 |
| Multi-Sector (Refugees) | 2,853,184 | - | 0% | 2,853,184 |
| Water And Sanitation | 1,750,000 | - | 0% | 1,750,000 |
| Gambia | 14,993,361 | 351,144 | 2% | 14,642,217 |
| Nutrition* | 6,487,861 | 351,144 | 5% | 6,136,717 |
| Education | 3,654,500 | - | 0% | 3,654,500 |
| Food Security | 3,230,000 | - | 0% | 3,230,000 |
| Water And Sanitation | 850,000 | - | 0% | 850,000 |
| Coordination And Common Services** | 771,000 | - | 0% | 771,000 |