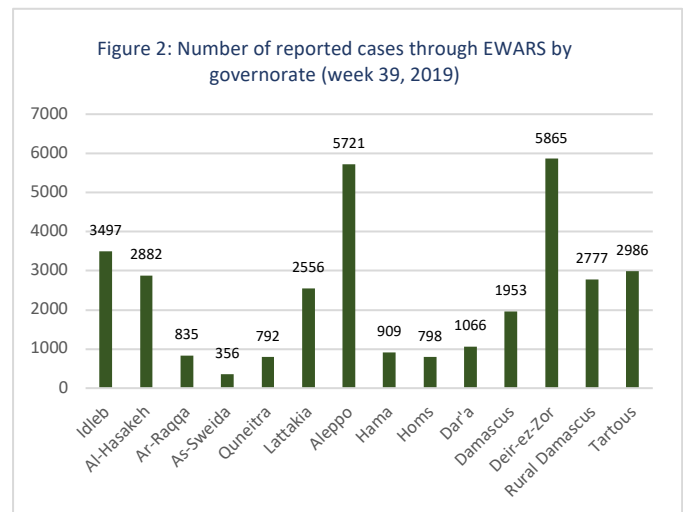
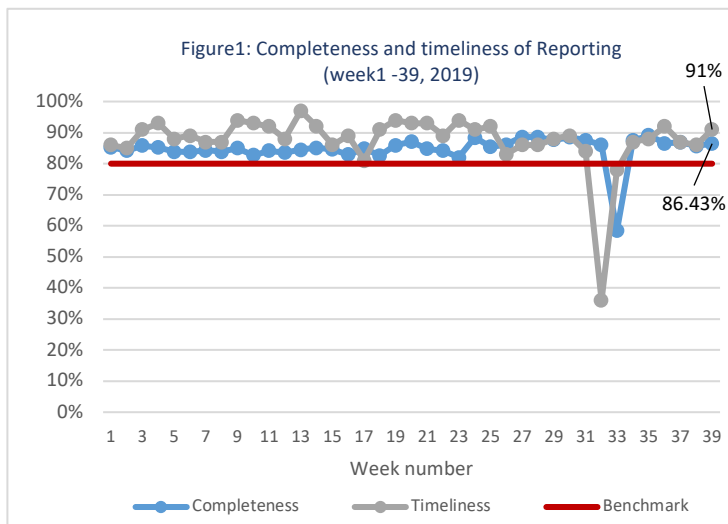


## Highlights

- A total of 285 104 consultations were recorded in all the 14 governorates in week 39.
- The leading causes of morbidity among all age groups were influenza-like illnesses (55%) and acute diarrhea (30.5%).
- 40 suspected measles cases were reported during week 39. Among them, the blood specimens of 34 cases were collected and tested at the reference laboratory in Damascus. The laboratory confirmed one measles case reported from Aleppo.
- Two acute flaccid paralysis cases were reported, each in Dara'a and Tartous. The stool samples were collected and transported to the polio reference laboratory in Damascus. The all samples tested were negative for *poliomyelitis*.
- One case of acute watery diarrhea was reported during week 39 from Dara'a. The case is an child under 5 years old. cholera rapid diagnostic test showed negative for *vibrio cholerae*.

## Performance Indicators

- A total of 1108 out of 1282 active reporting sites (86.4%) in all 14 governorates of Syria reported through EWARS, with 91% timeliness among those sites providing data during week 39 (Figure 1).



## Morbidity

### 1. Proportional Morbidity

- A total of 285 104 consultations were recorded in 1108 health facilities in 14 governorates in week 39, 2019. Among them, 32 993 cases were EWARS notifiable health conditions (Figure 2).
- Among all age groups, the leading causes of morbidity influenza-like illnesses (ILI) (55%), and acute diarrhea (AD) (30.5%).
- Of the 32 993 total reported cases, 51.5% (17 016) were female, and 42.8% (14 145) were children under 5 years old.
- Among children under 5 years of age, 37% of cases are AD, and ILI representing 53% of the cases during this reporting period (Figure 3).
- There was no change in the trend of ILI to total consultations in week 39.

Figure3: Proportional morbidity by age group in week 39, 2019

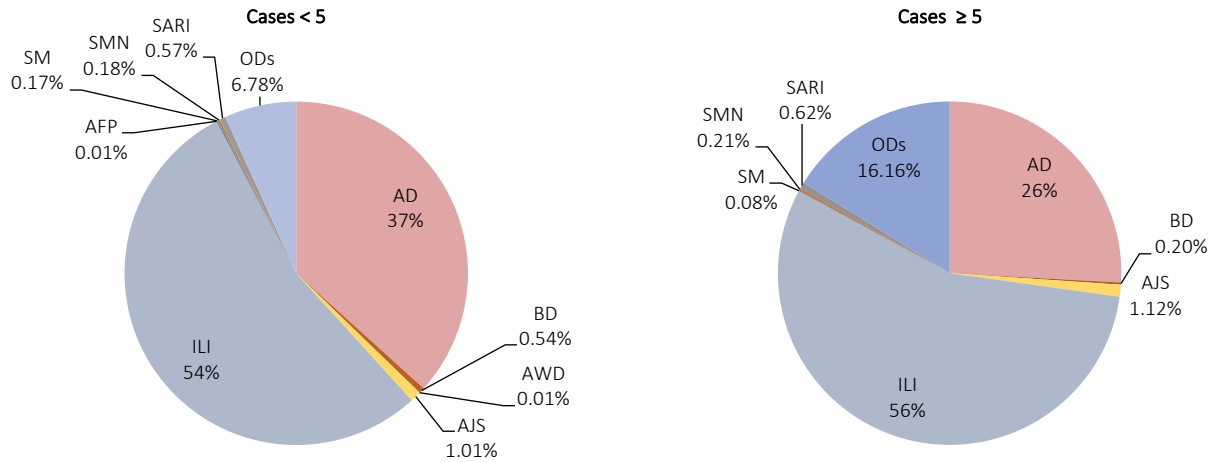
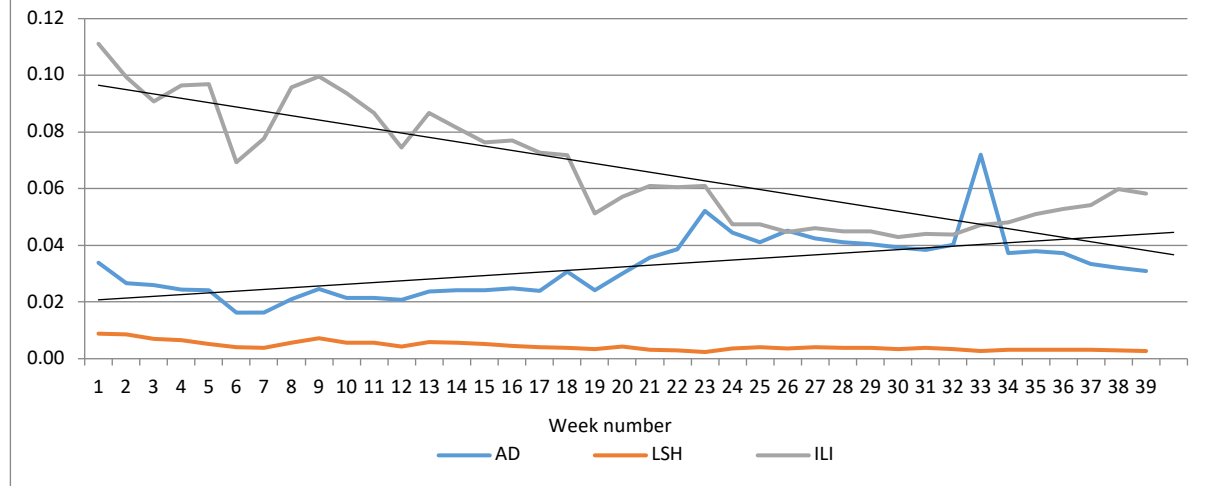


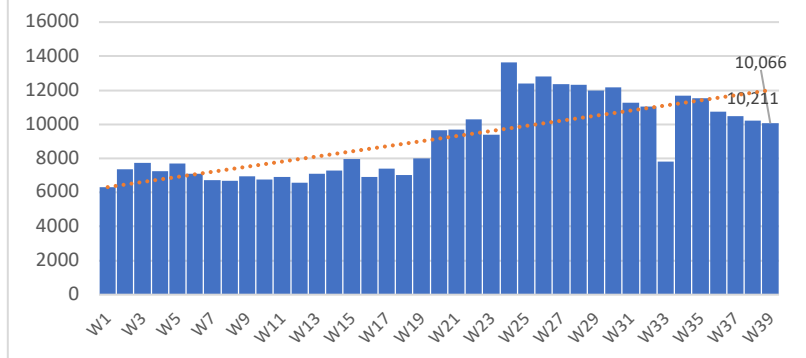
Figure 4: Proportion of Morbidity of AD, ILI, and LSH among the total consultation (week 1 - 39, 2019)



## 2. Waterborne Diseases

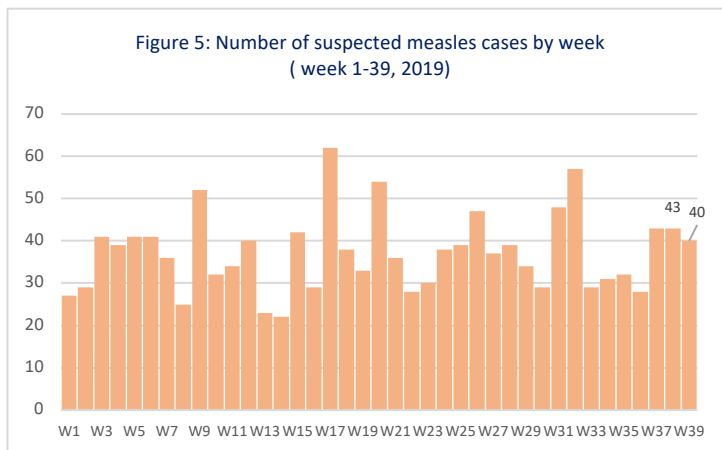
- There was one case of acute watery diarrhea (AWD) in week 39.
- The number of AD cases remain stable (Figure 4).

Figure 5: Number of acute diarrhea by week (week 1-39, 2019)



### 3. Vaccine Preventable Diseases

- Two cases of acute flaccid paralysis (AFP) were reported each from Dara'a and Tartous.
- Number of suspected measles in week 39 was 40. In total, 1449 suspected measles cases have been reported in 2019, and most cases were reported from Deir-ez-Zor (21.3%), Idleb (14.1%), and Ar-Raqqa (14.4%).



### 4. Other Diseases

- 4004 cases were reported as “other diseases” through EWARS. The health conditions with the highest incidents were lice (1150), leishmaniasis (844), and typhoid (473).

## Public Health Response Actions

#### *Acute flaccid paralysis*

Two AFP cases were reported during week 39. The stool sample from the both cases were collected and tested at the polio reference laboratory in Damascus, and the result showed the case negative for *poliomyelitis*.

#### *Suspected measles*

A total of 40 suspected measles cases was reported during week 39. All the cases were investigated by rapid response teams of the health directorates except for the cases reported from Idleb governorate (6 cases) where the access is limited. The blood specimens from 32 suspected cases were collected and tested for IgM ELISA at the reference laboratory in Damascus. The laboratory result showed one positive case for measles in Aleppo, and the rest were negative.

#### *Acute watery diarrhea case*

One case of acute watery diarrhea was reported during week 39 Dara'a. Cholera rapid diagnostic test was performed, and the result was negative for *vibrio cholerae*.

## Comparison with Previous Week by Health Condition

| Disease                                   | Week 38       | Week 39       |
|---|---------------|---------------|
| Acute diarrhea (AD)                       | 10 180        | 10 066        |
| Bloody diarrhea (BD)                      | 103           | 115           |
| Acute watery diarrhea (AWD)               | 1             | 1             |
| Acute jaundice syndrome (AJS)             | 381           | 355           |
| Influenza like illness (ILI)              | 17 684        | 18 147        |
| Acute flaccid paralysis (AFP)             | 4             | 2             |
| Suspected measles (SM)                    | 43            | 40            |
| Suspected meningitis (SMN)                | 68            | 66            |
| Typhoid fever (TYF)                       | 534           | 473           |
| Brucellosis (BRU)                         | 390           | 334           |
| Suspected tuberculosis (TB)               | 40            | 43            |
| Severe acute respiratory infection (SARI) | 159           | 197           |
| Suspected pertussis (PER)                 | 69            | 84            |
| suspected leishmaniasis (LSH)             | 821           | 844           |
| Suspected chickenpox (CHP)                | 192           | 209           |
| Scabies (SCA)                             | 361           | 411           |
| Lice (LIC)                                | 854           | 1150          |
| Suspected mumps (MUM)                     | 100           | 99            |
| Others                                    | 424           | 357           |
| <b>Total</b>                              | <b>32 408</b> | <b>32 993</b> |

|   |     | Idleb        | Al-Hasakeh   | Ar-Raqqa   | As-Sweida  | Quneitra   | Lattakia     | Aleppo       | Hama       | Homs       | Dar'a        | Damascus     | Deir-ez-Zor  | Rural Damascus | Tartous      | Total         |
|---|-----|--------------|--------------|------------|------------|------------|--------------|--------------|------------|------------|--------------|--------------|--------------|----------------|--------------|---------------|
| Acute diarrhea (AD)                       | < 5 | 922          | 748          | 294        | 38         | 63         | 143          | 769          | 159        | 150        | 148          | 434          | 951          | 231            | 140          | 5 190         |
|   | ≥ 5 | 840          | 581          | 122        | 53         | 58         | 253          | 601          | 188        | 123        | 167          | 449          | 861          | 308            | 272          | 4 876         |
| Bloody diarrhea (BD)                      | < 5 | 0            | 11           | 18         | 0          | 0          | 0            | 1            | 0          | 1          | 6            | 7            | 33           | 0              | 0            | 77            |
|   | ≥ 5 | 0            | 8            | 12         | 0          | 0          | 0            | 0            | 0          | 0          | 6            | 3            | 8            | 1              | 0            | 38            |
| Acute watery diarrhea (AWD)               | < 5 | 0            | 0            | 0          | 0          | 0          | 0            | 0            | 0          | 0          | 1            | 0            | 0            | 0              | 0            | 1             |
|   | ≥ 5 | 0            | 0            | 0          | 0          | 0          | 0            | 0            | 0          | 0          | 0            | 0            | 0            | 0              | 0            | 0             |
| Acute jaundice syndrome (AJS)             | < 5 | 45           | 7            | 34         | 0          | 0          | 0            | 3            | 2          | 1          | 6            | 5            | 34           | 5              | 1            | 143           |
|   | ≥ 5 | 50           | 13           | 20         | 9          | 4          | 4            | 4            | 26         | 5          | 22           | 15           | 24           | 8              | 8            | 212           |
| Influenza like illness (ILI)              | < 5 | 433          | 533          | 120        | 104        | 160        | 763          | 1629         | 69         | 134        | 202          | 344          | 1 617        | 790            | 745          | 7 643         |
|   | ≥ 5 | 398          | 752          | 118        | 129        | 479        | 1 112        | 1 979        | 53         | 251        | 331          | 621          | 1 273        | 1 274          | 1 734        | 10 504        |
| Acute flaccid paralysis (AFP)             | < 5 | 0            | 0            | 0          | 0          | 0          | 0            | 0            | 0          | 0          | 1            | 0            | 0            | 0              | 1            | 2             |
|   | ≥ 5 | 0            | 0            | 0          | 0          | 0          | 0            | 0            | 0          | 0          | 0            | 0            | 0            | 0              | 0            | 0             |
| Suspected measles (SM)                    | < 5 | 0            | 6            | 12         | 0          | 0          | 1            | 2            | 0          | 0          | 0            | 2            | 0            | 1              | 0            | 24            |
|   | ≥ 5 | 6            | 0            | 1          | 4          | 0          | 0            | 1            | 1          | 0          | 0            | 1            | 2            | 0              | 0            | 16            |
| Suspected meningitis (SMN)                | < 5 | 0            | 2            | 1          | 1          | 0          | 2            | 3            | 4          | 0          | 2            | 2            | 9            | 0              | 0            | 26            |
|   | ≥ 5 | 9            | 4            | 0          | 1          | 0          | 0            | 2            | 8          | 2          | 3            | 1            | 3            | 2              | 5            | 40            |
| Severe acute respiratory infection (SARI) | < 5 | 1            | 29           | 2          | 0          | 0          | 1            | 1            | 10         | 0          | 0            | 15           | 3            | 0              | 18           | 80            |
|   | ≥ 5 | 0            | 24           | 1          | 3          | 0          | 11           | 0            | 12         | 0          | 0            | 29           | 3            | 0              | 34           | 117           |
| Typhoid fever (TYF)                       | < 5 | 9            | 2            | 8          | 0          | 0          | 0            | 3            | 0          | 1          | 10           | 0            | 27           | 3              | 0            | 63            |
|   | ≥ 5 | 31           | 5            | 13         | 0          | 2          | 0            | 13           | 17         | 8          | 86           | 0            | 225          | 10             | 0            | 410           |
| Brucellosis (BRU)                         | < 5 | 11           | 4            | 0          | 0          | 0          | 2            | 3            | 0          | 0          | 1            | 0            | 23           | 1              | 0            | 45            |
|   | ≥ 5 | 25           | 6            | 7          | 0          | 5          | 0            | 31           | 13         | 5          | 23           | 4            | 140          | 30             | 0            | 289           |
| Suspected tuberculosis (TB)               | < 5 | 3            | 1            | 0          | 0          | 0          | 0            | 0            | 0          | 0          | 0            | 0            | 0            | 0              | 0            | 4             |
|   | ≥ 5 | 5            | 3            | 0          | 0          | 0          | 0            | 17           | 0          | 5          | 0            | 4            | 1            | 4              | 0            | 39            |
| Suspected pertussis (PER)                 | < 5 | 29           | 0            | 2          | 0          | 0          | 0            | 2            | 0          | 1          | 0            | 0            | 14           | 0              | 0            | 48            |
|   | ≥ 5 | 21           | 0            | 0          | 0          | 0          | 0            | 1            | 0          | 0          | 0            | 0            | 14           | 0              | 0            | 36            |
| suspected leishmaniasis (LSH)             | < 5 | 91           | 10           | 1          | 0          | 0          | 1            | 68           | 2          | 2          | 0            | 0            | 28           | 2              | 1            | 206           |
|   | ≥ 5 | 125          | 30           | 10         | 0          | 0          | 1            | 364          | 56         | 3          | 0            | 0            | 26           | 7              | 16           | 638           |
| Suspected chickenpox (CHP)                | < 5 | 18           | 8            | 0          | 0          | 0          | 0            | 16           | 3          | 0          | 0            | 0            | 54           | 5              | 2            | 106           |
|   | ≥ 5 | 33           | 10           | 0          | 1          | 2          | 1            | 11           | 1          | 5          | 3            | 3            | 27           | 6              | 0            | 103           |
| Scabies (SCA)                             | < 5 | 24           | 4            | 0          | 0          | 0          | 1            | 7            | 2          | 5          | 0            | 0            | 48           | 1              | 0            | 92            |
|   | ≥ 5 | 62           | 7            | 0          | 4          | 2          | 16           | 65           | 12         | 26         | 0            | 7            | 116          | 0              | 2            | 319           |
| Lice (LIC)                                | < 5 | 95           | 3            | 1          | 3          | 1          | 4            | 27           | 6          | 15         | 4            | 0            | 39           | 1              | 0            | 199           |
|   | ≥ 5 | 186          | 6            | 4          | 6          | 8          | 235          | 69           | 258        | 39         | 3            | 6            | 66           | 61             | 4            | 951           |
| Suspected mumps (MUM)                     | < 5 | 0            | 0            | 15         | 0          | 1          | 0            | 4            | 0          | 0          | 0            | 1            | 20           | 0              | 0            | 41            |
|   | ≥ 5 | 25           | 5            | 5          | 0          | 2          | 0            | 2            | 0          | 0          | 0            | 0            | 19           | 0              | 0            | 58            |
| Others                                    | < 5 | 0            | 24           | 1          | 0          | 2          | 0            | 13           | 3          | 3          | 4            | 0            | 84           | 19             | 2            | 155           |
|   | ≥ 5 | 0            | 36           | 13         | 0          | 3          | 5            | 10           | 4          | 13         | 37           | 0            | 73           | 7              | 1            | 202           |
| Total of < 5                              |     | 1 681        | 1 392        | 509        | 146        | 227        | 918          | 2 551        | 260        | 313        | 385          | 810          | 2 984        | 1 059          | 910          | 14 145        |
| Total of ≥ 5                              |     | 1 816        | 1 490        | 326        | 210        | 565        | 1 638        | 3 170        | 649        | 485        | 681          | 1 143        | 2 881        | 1 718          | 2 076        | 18 848        |
| <b>Grand total</b>                        |     | <b>3 497</b> | <b>2 882</b> | <b>835</b> | <b>356</b> | <b>792</b> | <b>2 556</b> | <b>5 721</b> | <b>909</b> | <b>798</b> | <b>1 066</b> | <b>1 953</b> | <b>5 865</b> | <b>2 777</b>   | <b>2 986</b> | <b>32 993</b> |