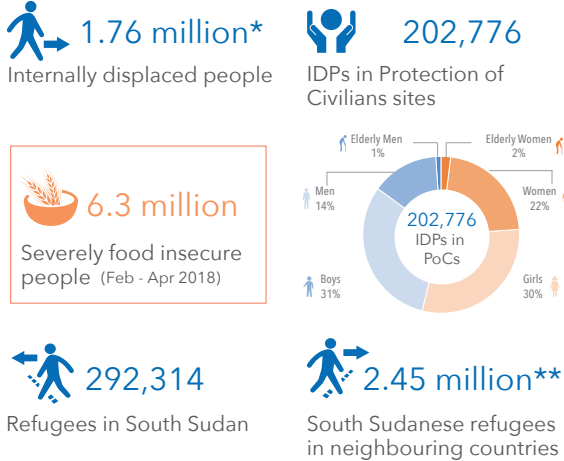
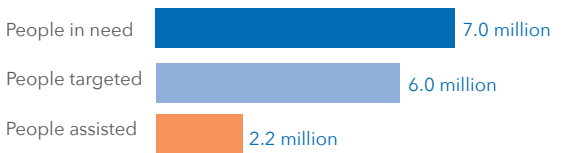


In March, partners in South Sudan continued to respond to health emergencies including an outbreak of Rift Valley fever, measles and a suspected outbreak of meningitis, in different parts of the country. The outbreak of Rift Valley fever continued to evolve in parts of Lakes, with a total of 40 cases and four related deaths reported in Yirol East, Yirol West and Awerial. However, the suspected meningitis outbreak in Torit, Eastern Equatoria, first reported on 15 February 2018, started to decline, with only two suspected cases reported during March. A total of 173 suspected cases with 31 deaths (CFR = 17.92 per cent) have been reported, as partners continued investigations into the illness. In Western Equatoria, over 700 internally displaced persons (IDPs) arrived in Nagero County, after trekking hundreds of kilometers for days, fleeing armed clashes in Diem-Zubeir Payam, Raja County, Western Bahr el Ghazal. Partners reported that 14 people, mostly children, died from fatigue and exhaustion as the families fled. In March, partners in the Greater Equatoria region continued to register returns of refugees and IDPs to locations in Lainya, Yei, Kajo-keji and Magwi counties. However, most of the returning families, whose homes and property were destroyed in the fighting in 2016 and 2017, were reported to be in need of assistance.

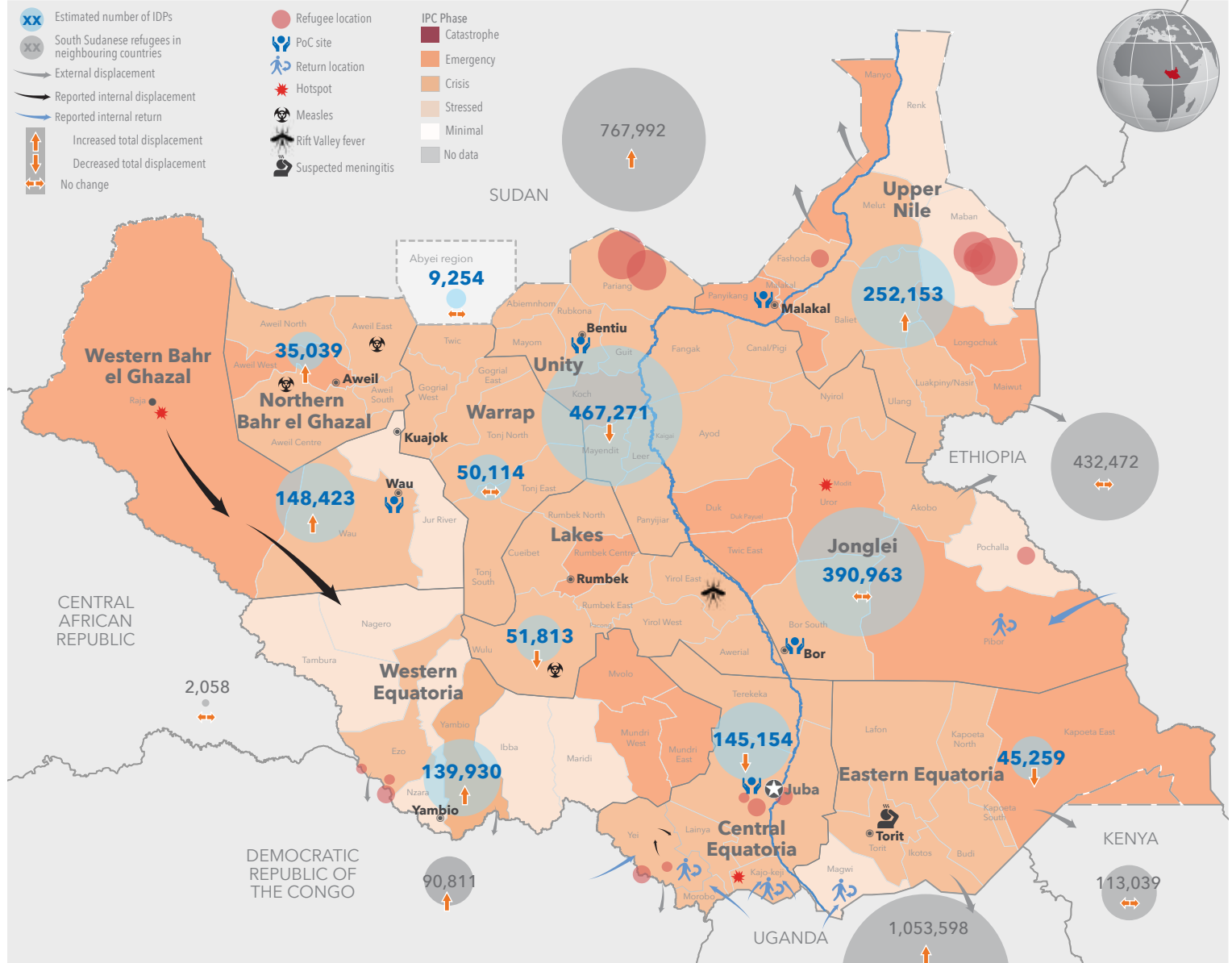
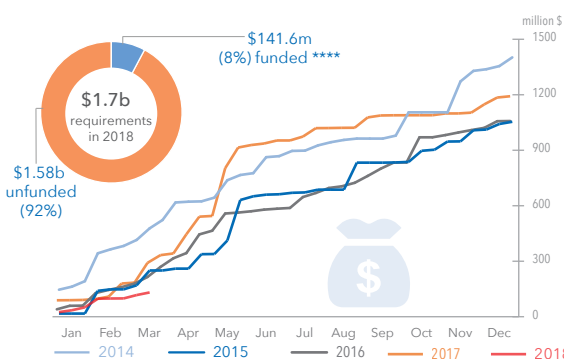
## KEY FIGURES



## NEEDS AND RESPONSE 2018\*\*\*



## FUNDING STATUS 2018\*\*\*\*



\*The drop in the number of internally displaced persons (IDPs) is as a result of new estimates by IOM Displacement Tracking Matrix (DTM), which tracked and monitored the displacement and population mobility in 23 counties in January and February 2018. The number of people displaced each month does not necessarily result in a rise in the overall number of IDPs as many people are "re-displaced" and had already been counted as IDPs. | \*\*The number of South Sudanese refugees reported includes those who arrived before December 2013. | \*\*\*HRP 2018. | \*\*\*\*As recorded in the Financial Tracking System (FTS) as of 31 Jan 2018. Further pledges have been announced but not yet tracked. | IDP: Internally Displaced People. PoC: Protection of Civilians. | **Creation date:** 03 April 2018 **Sources:** IOM, UNHCR, OCHA and humanitarian partners | **Feedback:** ochasouthsudan@un.org. The boundaries and names shown and the designations used on this map do not imply official endorsement or acceptance by the United Nations. Final boundary between the Republic of South Sudan and the Republic of Sudan has not yet been determined. Final status of Abyei region is not yet determined.