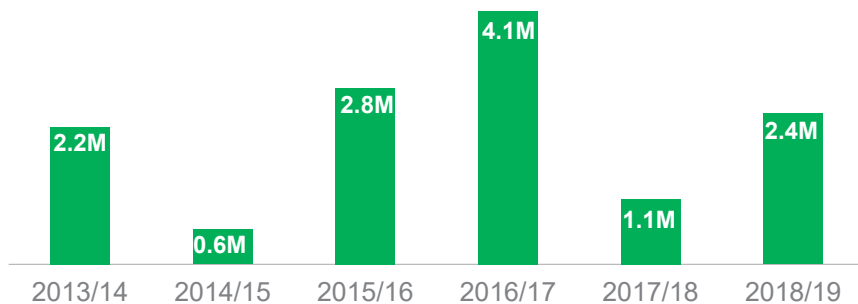


### OVERVIEW

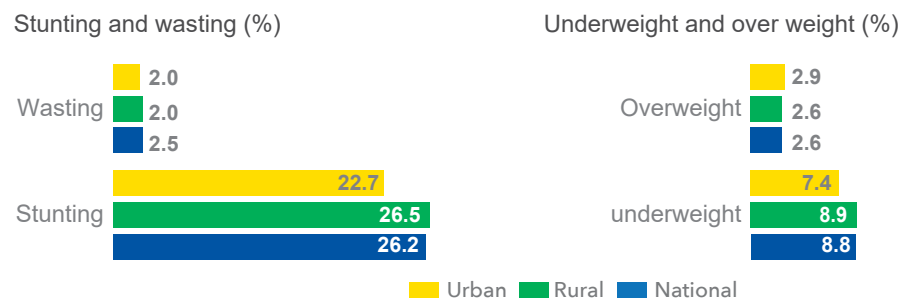
The cereal production for Zimbabwe is estimated to be 1,998,041 tons, against a human cereal requirement of 1,735,146 tons, resulting in a cereal harvest surplus of 101,000 tons. The late start of the rains in some parts of the country, erratic rainfall during the first part of the season, as well as the dry spell in January 2018 affected crop production. Furthermore, incessant rains in the latter part of the season also affected weeding and harvesting.

According to the ZimVAC 2018 Rural Livelihoods Assessment, the number of severely food insecure people are expected to increase from about 567,000 people between April and June 2018 to 2.4 million between July 2018 and March 2019, translating to 28% of the rural population. The report also indicates that household average incomes were reported to be lower than to last year. There was an increase in the percentage of households consuming poor diets, from 16% to 20%. About 72% of households were accessing water from improved sources and 50% had access to improved sanitation. Stunting in Zimbabwe is reported at 26% and wasting at 2.5%.

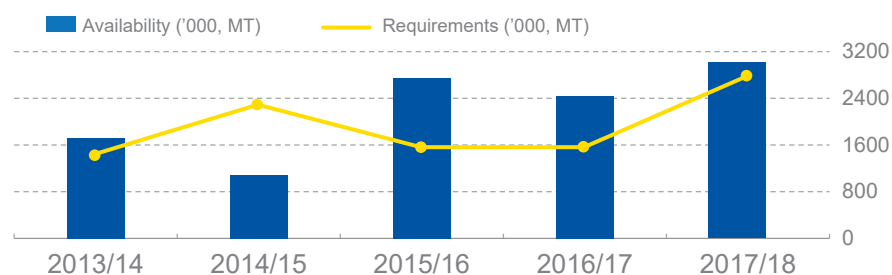
### FOOD INSECURE POPULATION TRENDS



### NUTRITION STATUS

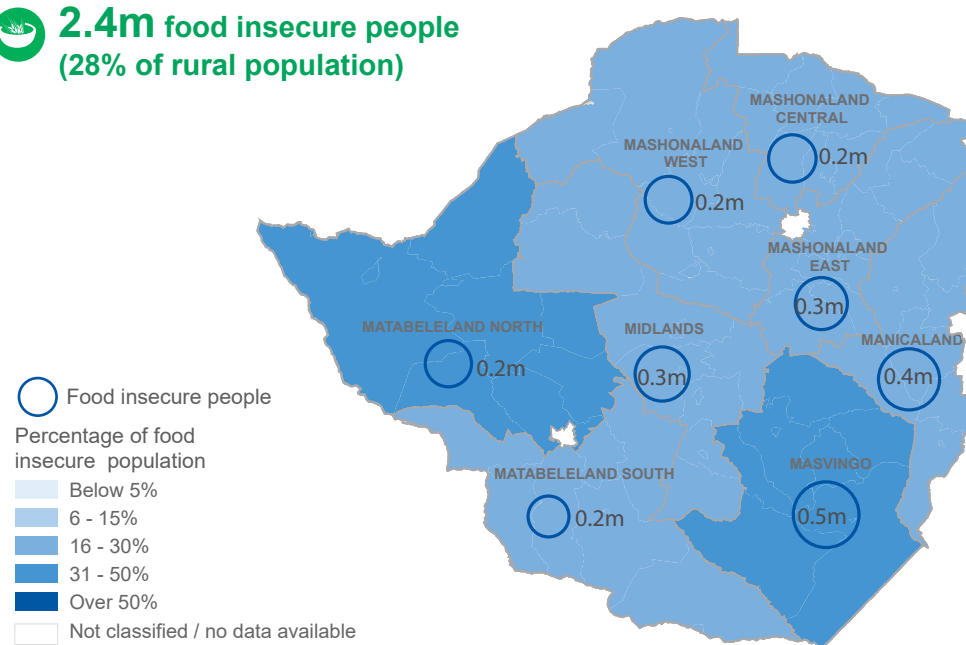


### CEREAL AVAILABILITY AND REQUIREMENTS



### FOOD SECURITY SITUATION

**2.4m food insecure people**  
(28% of rural population)



### REGIONAL SOCIO - ECONOMIC CONTEXT

|                         |                     |                        |                                    |
|-------------------------|---------------------|------------------------|------------------------------------|
| Total population:       | <b>14.9M</b>        | Rural population:      | <b>9.3M</b> (62% total population) |
| Life expectancy         | <b>59 years</b>     | Employment Rate        | <b>93.0%</b> (2017)                |
| Population Growth Rate  | <b>2.0%</b>         | Average GDP Growth     | <b>4.5%</b> (2018 expected)        |
| Human Development Index | <b>0.52</b> (2015)  | Under 5 Mortality Rate | <b>55</b> per 1,000 live births    |
| Adult Literacy          | <b>94.0%</b> (2017) | Inflation              | <b>2.7%</b> (2018)                 |
|                         |                     | HIV and AIDS           | <b>15.0%</b>                       |