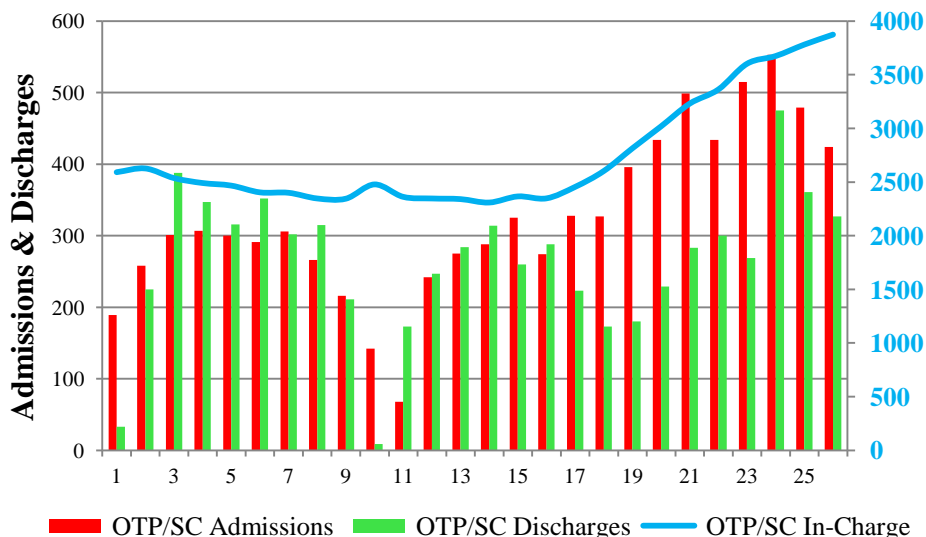


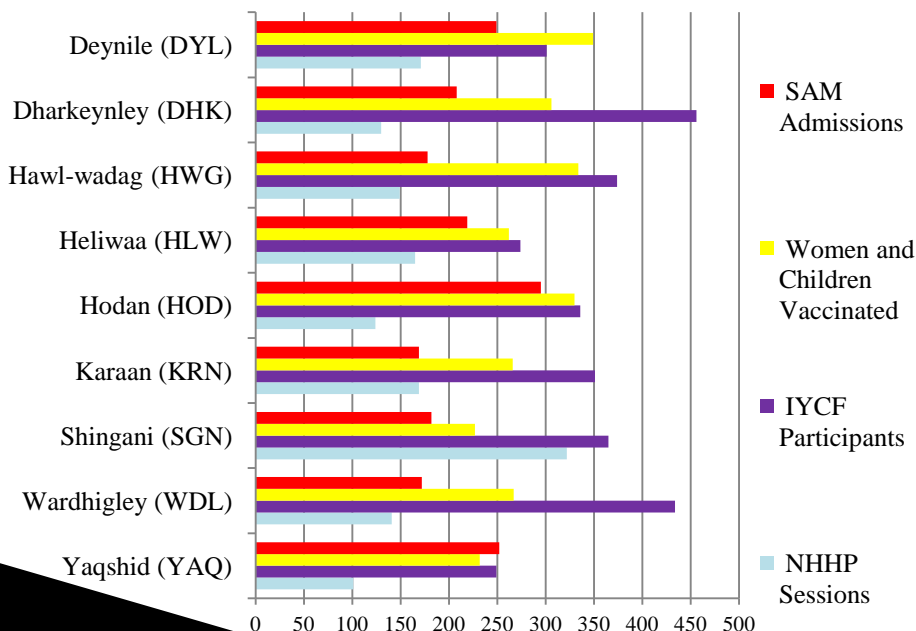
Community-Based Therapeutic Care (CTC) Mogadishu, Somalia

SAACID, in partnership with UNICEF, operates a health and nutrition network across Mogadishu City; treating severely malnourished children under 5 years of age, providing counselling and micro-nutrient supplementation to pregnant and lactating women, immunization services, TB treatment, and hygiene promotion. This bulletin provides figures and highlights from this month's activities.

SAACID Outpatient Therapeutic Programmes (OTPs) and Inpatient Care at the Stabilization Centre (SC) Caseload of Severely Acutely Malnourished (SAM) Children Weeks³ of 2014



SAACID CTC Activities By District - June 2014



OTP/SC for <5s – June 2014

OTP/SC in-charge at end of month	3,875
OTP new admissions this month	1,924
SC admissions this month	83
Percentage +/- from last month ¹	+19%
District ² with highest admissions	HOD
OTP cured rate this month	90%
OTP default rate this month	9%
SC success rate this month	87%
Avg. weight gain (g/kg/day)	5.10
Average length of stay	58 days
SAM cases over the last 12 months	12,448

EPI Activities⁵ – June 2014

# of children vaccinated	2,193
# of women vaccinated (TTV)	387
Cumulative children - 12 months	20,628
Cumulative women - 12 months	4,234



Outreach – June 2014

Total screened by outreach workers	11,708
SAM Referrals by outreach workers	1,993
% of SAM referrals admitted ⁴	98%
# of home and SC visits for follow up	560

IYCF Activities – June 2014

Individual counselling sessions	929
Group counselling sessions	430
# of participants in group sessions	2,296
# of participants last 12 months	51,563

Micro-nutrient Interventions – June 2014

# of children that received Vit. A	1,875
# of women that received MMN	no supply
# of children & PLW dewormed	853
Cases of diarrhoea treated with zinc	102



NHHP Activities – June 2014

SAACID reached 11,673 men and women this month through 1,472 small group sessions conducted across all the clinics on special topics for positive nutrition, health and hygiene practices.

NHHP Topics This Month	# of Sessions
Diversified Diet	366
Importance of De-worming	384
Health-Seeking Behaviour	374
Discouragement of Bottle-Feeding	348

TB Activities⁵ – June 2014

TB patients in-charge	358
Cured TB cases this month	30
Malnourished TB patients	87

Incidents – June 2014

There were no incidents this month.

The CTC Programme includes 135 outreach workers that conduct active case finding, follow up and deliver key health, hygiene, and nutrition messages on a daily basis across 9 districts of the city.

Commitment to Training and Quality Assurance

SAACID's citywide CTC programme began in September 2009. Since then, SAACID has treated more than 502,000 acutely malnourished children; as well as providing hundreds-of-thousands of ancillary EPI, IYCF, NHHP consultations. To successfully implement such large-scale programming, a number of elements have to be successfully integrated and constantly monitored and improved upon. Two of those elements are logistics and training. This month SAACID demonstrated this ongoing commitment to continuous training and quality assurance for all programme elements with refresher training and review of SAACID's supply chain. Logistics staff from the warehouse to the clinics participated in the training, alongside management.



SAACID



SAACID (Somali meaning 'to help') is an indigenous Somali not-for-profit, non-governmental, organization, founded and directed by Somali women and registered in Somalia, Australia and the US. For more information visit www.saacid.org or contact us at information@saacid.org.

Index - SAACID Monthly Mogadishu Health and Nutrition Bulletin

Terms

CTC	Community-Based Therapeutic Care
EPI	Expanded Programme of Immunization
FFW	Food-For-Work
IDP	Internally Displaced Person
In-charge	Number of active cases registered in the programme at a given time.
IYCF	Infant and Young Child Feeding
MAM	Moderate Acute Malnutrition
MCHN	Mother, Child, Health and Nutrition
MMN	Multi-micronutrients (tablets)
MUAC	Middle-Upper Arm Circumference
NHHP	Nutrition, Health & Hygiene Promotion
OTP	Outpatient Therapeutic Programme
PLW	Pregnant & Lactating Women
RUSF	Ready to Use Supplementary Food
RUTF	Ready to Use Therapeutic Food
SAM	Severe Acute Malnutrition
SC	Stabilization Centre (inpatient care for acutely malnourished children with medical complications)
SFP	Supplementary Feeding Programme
TB	Tuberculosis
WASH	Water, Sanitation and Hygiene
WCBA	Women of Child-bearing Age

References

- ¹ SAACID's CTC clinics operate on a weekly schedule, admitting and discharging children 5 days a week. Monthly figures cover either 20 or 25 operational days, depending on the number of weeks. Relative percentage +/- in admissions are then based on average daily admissions for that month compared to the previous month.
- ² See legend from graph of admissions by district on page 1 for abbreviations of district sites – *also see below*. SAACID operates the CTC Programme in 9 of Mogadishu's 16 districts.
- ³ Epidemiological weeks are used to demonstrate trends, due to the weekly schedule and the variation in operational days per month.
- ⁴ % of outreach worker referrals admitted is calculated by dividing the number of successful admissions from referrals by the total number of SAM referrals respectively. The difference represents the error rate (measurements done incorrectly) and those that do not act on the referral.
- ⁵ EPI staffing is supported by the Collegiate Churches of New York. TB activities receive support from WVI and WHO. All other operations and supplies for the CTC Programme are supported by UNICEF.

Mogadishu District Clinic Abbreviations

**Those with an asterisk are the districts where SAACID-managed clinics currently operate.*

Karaan (KRN)*	Wadajir (WDJ)	Hamar-jajab (HJB)	Dharkeynley (DHK)*	Heliwaa (HLW)*
Hodan (HOD)*	Bondhere (BDH)	Shibis (SBS)	Deynile (DYL)*	Abdul-aziz (AZZ)
Yaqshid (YAQ)*	Shingani (SGN)*	Hamar-weyne (HWN)	Waberi (WAB)	Hawl-wadag (HWG)*
Wardhigley (WDL)*				

Photo Descriptions

Source: All photos by SAACID unless otherwise noted

Page 1 – Photo 1: SAACID SC Head Nurse with patient on 10-6-14 *Photo by Eric DeLuca*

Page 1 – Photo 2: MUAC measurement of SAM child

Page 2 – Photo on left: NHHP session at KRN clinic in June 2014

Page 2 – Photo 1 on right: Logistics training session at warehouse, reviewing RUTF stock card in June 2014

Page 2 – Photo 2 on right: Logistics training session at clinic, reviewing stock register in June 2014

Page 2 – Photo 3 on right: Logistics training theoretical session in classroom in June 2014

Descriptions of Graphs

Source: All data collected from SAACID CTC programme

Page 1 – Graph 1: The figure demonstrates the combined OTP/SC (SAM) admissions over the weeks of 2014, against the weekly discharges, along with a trend line of the active caseload each week (the number of OTP/SC in-charge). As explained in references ¹ and ³ weekly trends are used due to variation in the number of operational days each month.

Page 1 – Graph 2: The graph compares the figures from various CTC activities by district/clinic for the current month.