

Community-Based Therapeutic Care (CTC) Mogadishu, Somalia

SAACID, in partnership with UNICEF, operates a health and nutrition network across Mogadishu City; treating severely malnourished children under 5 years of age, providing counselling and micro-nutrient supplementation to pregnant and lactating women, immunization services, TB treatment, and hygiene promotion. This bulletin provides figures and highlights from this month's activities.



OTP/SC for <5s – August 2014

OTP/SC in-charge at end of month	3,476
OTP new admissions this month	1,808
SC admissions this month	75
Percentage +/- from last month ¹	+33%
District ² with highest admissions	YAQ
OTP cured rate this month	92%
OTP default rate this month	7.5%
SC success rate this month	82%
Avg. weight gain (g/kg/day)	5.07
Average length of stay	57 days
SAM cases over the last 12 months	14,704

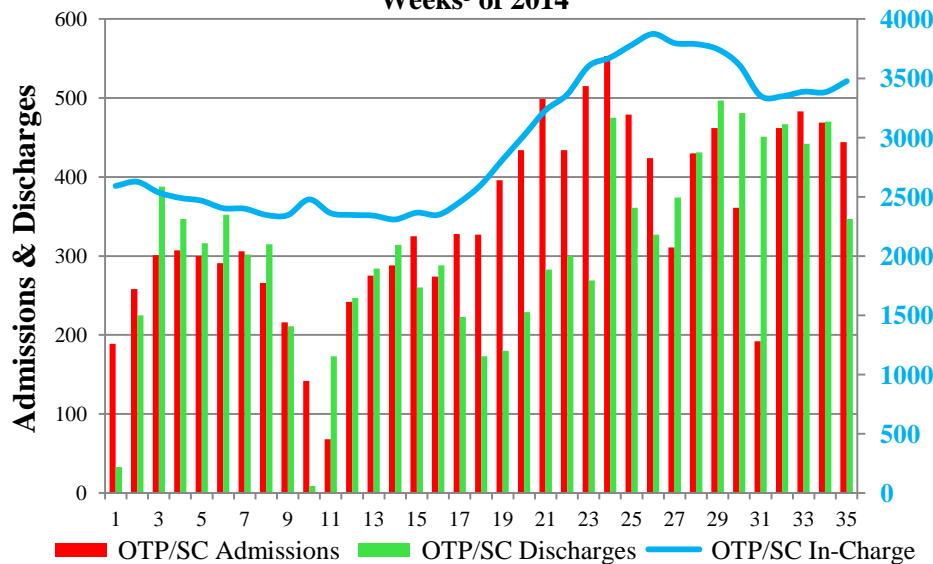


EPI Activities⁵ – August 2014

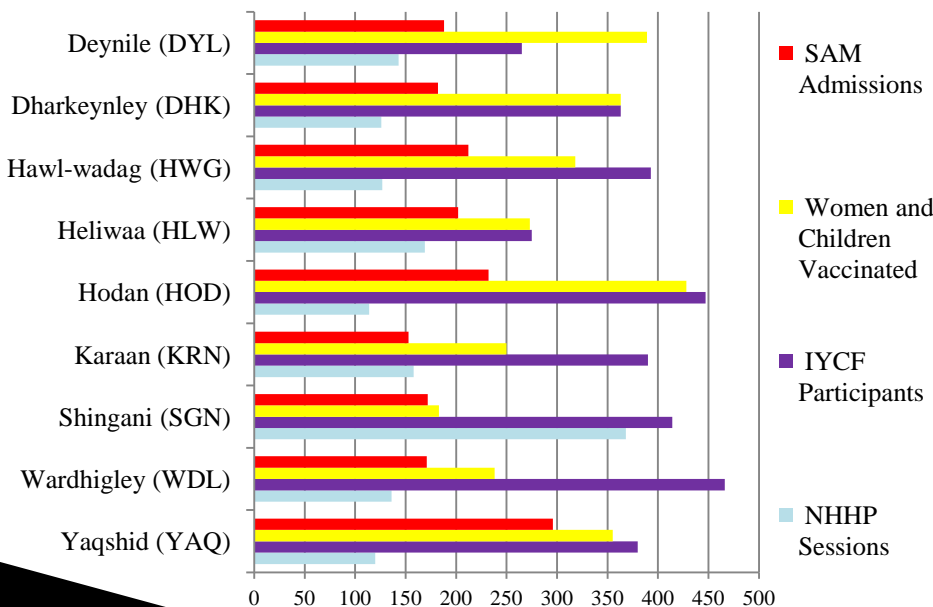
# of children vaccinated	2,347
# of women vaccinated (TTV)	468
Cumulative children - 12 months	19,809
Cumulative women - 12 months	3,821



SAACID Outpatient Therapeutic Programmes (OTPs) and Inpatient Care at the Stabilization Centre (SC) Caseload of Severely Acutely Malnourished (SAM) Children Weeks³ of 2014



SAACID CTC Activities By District - August 2014



Outreach – August 2014

Total screened by outreach workers	10,801
SAM Referrals by outreach workers	1,910
% of SAM referrals admitted ⁴	96%
# of home and SC visits for follow up	367

IYCF Activities – August 2014

Individual counselling sessions	925
Group counselling sessions	455
# of participants in group sessions	2,560
# of participants last 12 months	50,856



Micro-nutrient Interventions – August 2014

# of children that received Vit. A	2,183
# of women that received MMN	no supply
# of children & PLW dewormed	673
Cases of diarrhoea treated with zinc	139

NHHP Activities – August 2014

SAACID reached 11,221 men and women this month through 1,461 small group sessions conducted across all the clinics on special topics for positive nutrition, health and hygiene practices.

NHHP Topics This Month # of Sessions

Hand-washing	369
Household Water Management	388
How to Take MUAC	342
Complementary Feeding	362

TB Activities⁵ – August 2014

TB patients in-charge	361
Cured TB cases this month	26
Malnourished TB patients	101

Incidents – August 2014

There were no incidents this month.

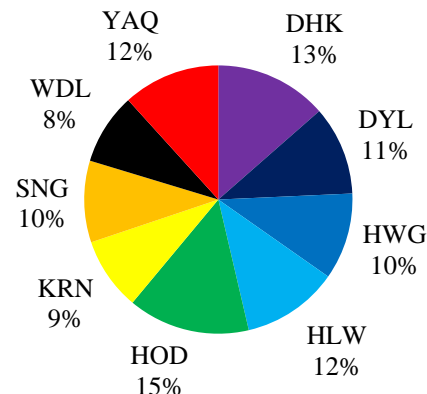
The CTC Programme includes 135 outreach workers that conduct active case finding, follow up and deliver key health, hygiene, and nutrition messages on a daily basis across 9 districts of the city.

Comparison Across Clinics: January-August 2014

Each month this bulletin presents the combined key figures for all the components of the CTC Programme for the entire CTC network in Mogadishu City. For a closer look at individual clinic performance, the following presents a comparison of 2014 data to date by clinic.

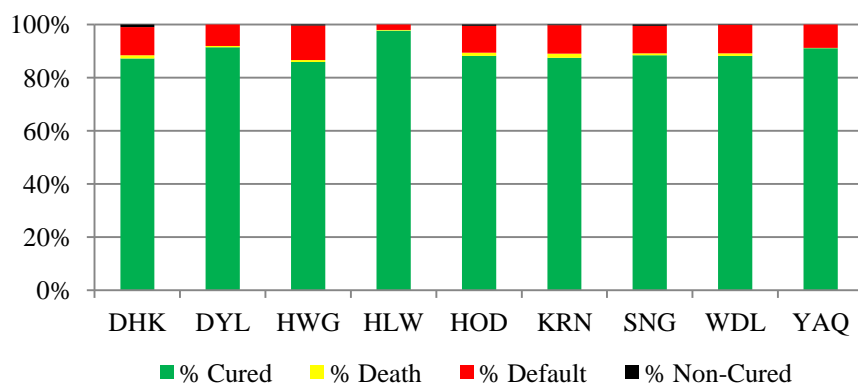
SAM Admissions

Overall there has been a fairly even distribution of total SAM admissions across the 9 clinics. The clinic in Hodan (HOD) District has experienced the most admissions (1,708) since January 2014, while the clinic in Wardhigley (WDL) District has experienced the lowest number (999) of admissions over the eight-month period.



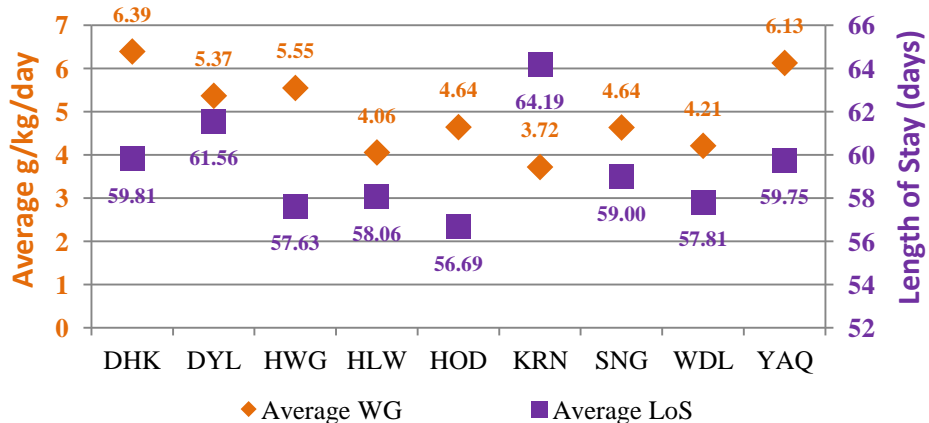
Discharge Performance Indicators

All clinics have achieved the Sphere Standards of >75% cured and <15% default to date this year as follows:



Weight Gain (WG = g/kg/day) and Length of Stay (days)

The data varying the most by clinic is seen in the sample of weight gain and length of stay (LoS) over the last eight months, although all clinics fall within normal ranges and patterns of similar programming.



Index - SAACID Monthly Mogadishu Health and Nutrition Bulletin

Terms

CTC	Community-Based Therapeutic Care
EPI	Expanded Programme of Immunization
FFW	Food-For-Work
IDP	Internally Displaced Person
In-charge	Number of active cases registered in the programme at a given time.
IYCF	Infant and Young Child Feeding
MAM	Moderate Acute Malnutrition
MCHN	Mother, Child, Health and Nutrition
MMN	Multi-micronutrients (tablets)
MUAC	Middle-Upper Arm Circumference
NHHP	Nutrition, Health & Hygiene Promotion
OTP	Outpatient Therapeutic Programme
PLW	Pregnant & Lactating Women
RUSF	Ready to Use Supplementary Food
RUTF	Ready to Use Therapeutic Food
SAM	Severe Acute Malnutrition
SC	Stabilization Centre (inpatient care for acutely malnourished children with medical complications)
SFP	Supplementary Feeding Programme
TB	Tuberculosis
WASH	Water, Sanitation and Hygiene
WCBA	Women of Child-bearing Age

References

- ¹ SAACID's CTC clinics operate on a weekly schedule, admitting and discharging children 5 days a week. Monthly figures cover either 20 or 25 operational days, depending on the number of weeks. Relative percentage +/- in admissions are then based on average daily admissions for that month compared to the previous month.
- ² See legend from graph of admissions by district on page 1 for abbreviations of district sites – *also see below*. SAACID operates the CTC Programme in 9 of Mogadishu's 16 districts.
- ³ Epidemiological weeks are used to demonstrate trends, due to the weekly schedule and the variation in operational days per month.
- ⁴ % of outreach worker referrals admitted is calculated by dividing the number of successful admissions from referrals by the total number of SAM referrals respectively. The difference represents the error rate (measurements done incorrectly) and those that do not act on the referral.
- ⁵ EPI staffing is supported by the Collegiate Churches of New York. TB activities receive support from WVI, WHO and WFP. All other operations and supplies for the CTC Programme are supported by UNICEF.

Mogadishu District Clinic Abbreviations

**Those with an asterisk are the districts where SAACID-managed clinics currently operate.*

Karaan (KRN)*	Wadajir (WDJ)	Hamar-jajab (HJB)	Dharkeynley (DHK)*	Heliwaa (HLW)*
Hodan (HOD)*	Bondhere (BDH)	Shibis (SBS)	Deynile (DYL)*	Abdul-aziz (AZZ)
Yaqshid (YAQ)*	Shingani (SGN)*	Hamar-weyne (HWN)	Waberi (WAB)	Hawl-wadag (HWG)*
Wardhigley (WDL)*				

Photo Descriptions

Source: All photos by SAACID

- Page 1 – Photo 1: SAACID KRN clinic EPI activities in August 2014
Page 1 – Photo 2: MUAC measurement of SAM child
Page 1 – Photo 3: OTP activities at KRN clinic in August 2014
Page 2 – Photo 1 on left: NHHP session on complementary feeding at KRN clinic in August 2014

Descriptions of Graphs

Source: All data collected from SAACID CTC programme

- Page 1 – Graph 1: The figure demonstrates the combined OTP/SC (SAM) admissions over the weeks of 2014, against the weekly discharges, along with a trend line of the active caseload each week (the number of OTP/SC in-charge). As explained in references ¹ and ³ weekly trends are used due to variation in the number of operational days each month.
- Page 1 – Graph 2: The graph compares the figures from various CTC activities by district/clinic for the current month.