



### Introduction

The dynamic and multi-faceted nature of the South Sudanese displacement crisis has created significant challenges for the delivery of humanitarian aid. Accessibility issues within South Sudan have impeded a systematic understanding of WASH needs in many areas of the country. This has created difficulties in establishing a clear and unambiguous system for prioritising the delivery of aid, thereby limiting the effectiveness of humanitarian planning and limiting the potential impact of donor funding. In order to fill this information gap, REACH conducted a WASH infrastructure mapping exercise in Bor town. Data collection took place on June 14th, 2021 and succeeded in mapping 1119 latrines and 111 waterpoints. Key findings are presented below in charts (pies & bars) and maps with figures in percentages (%) and numbers assessed enclosed in parenthesis next to each percentage value.

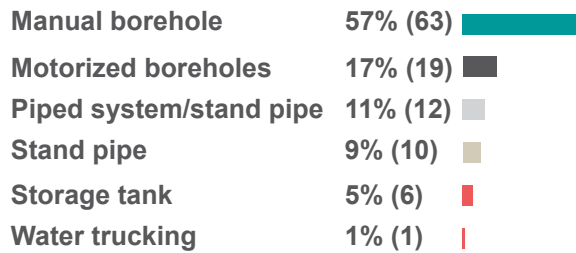
### Methodology

Using a GIS software, a polygon covering the municipal area was created and subdivided into grids squares of 250 meters of side length. Each of the resulting 301 square grids was assigned to a team of 16 enumerators to map and assess existing WASH infrastructure. GPS points were recorded also for grids where no WASH infrastructure data was identified. Enumerators were trained to use mobile applications ([MapsMe](#) and [Kobo](#)) that allowed them to georeference data collected. For grids that could not be physically assessed through direct observation (due to lack of access) participatory mapping was conducted. As a result, 100% coverage was achieved (301/301 grids). Further details on the methodology and data collection tools can be found in the [Terms of Reference](#).

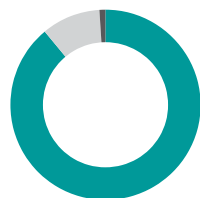


### Waterpoints

#### Waterpoints by type

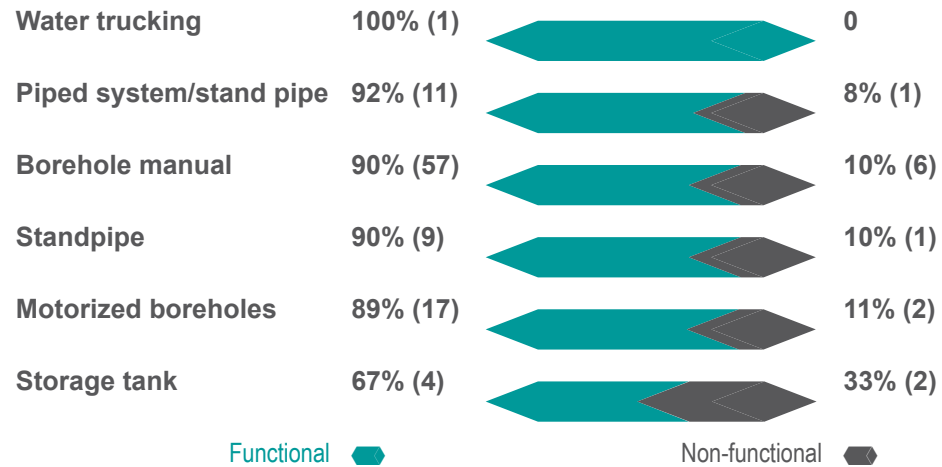


**Waterpoints by type**  
100% (111) Improved (3)



**Waterpoint functionality**  
89% (99) Functional  
10% (11) Non-functional  
1% (1) Decommissioned

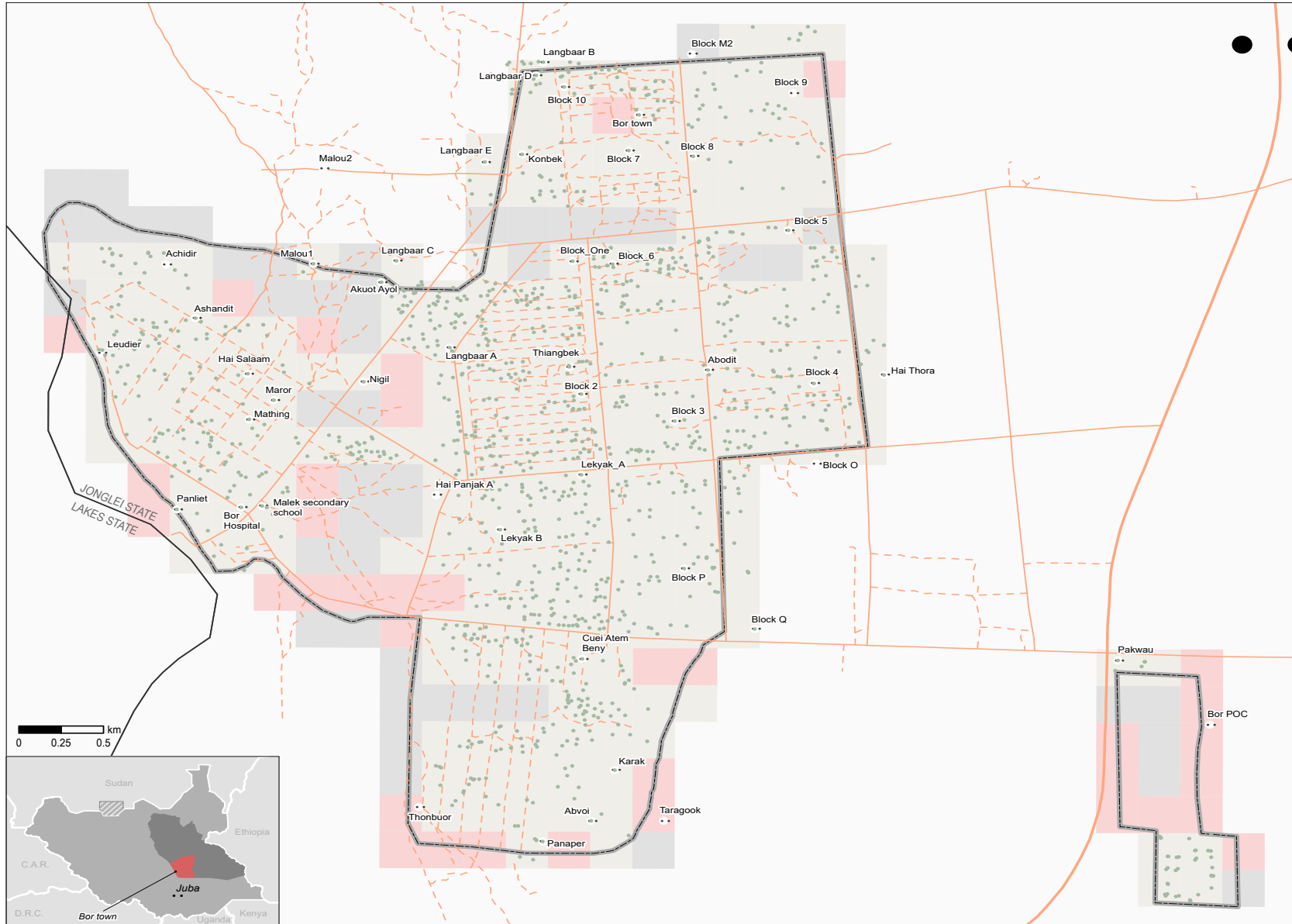
### Improved waterpoints functionality by type



**Waterpoint requiring payment**  
79% (88) Do not require payment  
21% (23) Require payment



### Bor Town Assessment Coverage Map



**Coverage**

- All infrastructure (1230)
- Reported referred area name

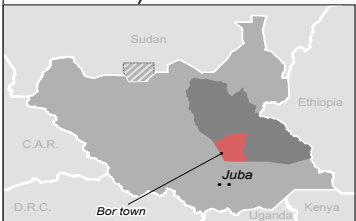
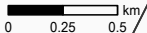
**Road network**

- primary
- secondary
- - - Other roads

▭ Bor town/ POC extent

**Assessed grids (250m2)**

- No infrastructure observed (36)
- Limited information/ inaccessible (47)
- Observed inhabited areas (218)

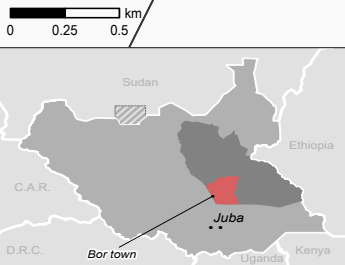
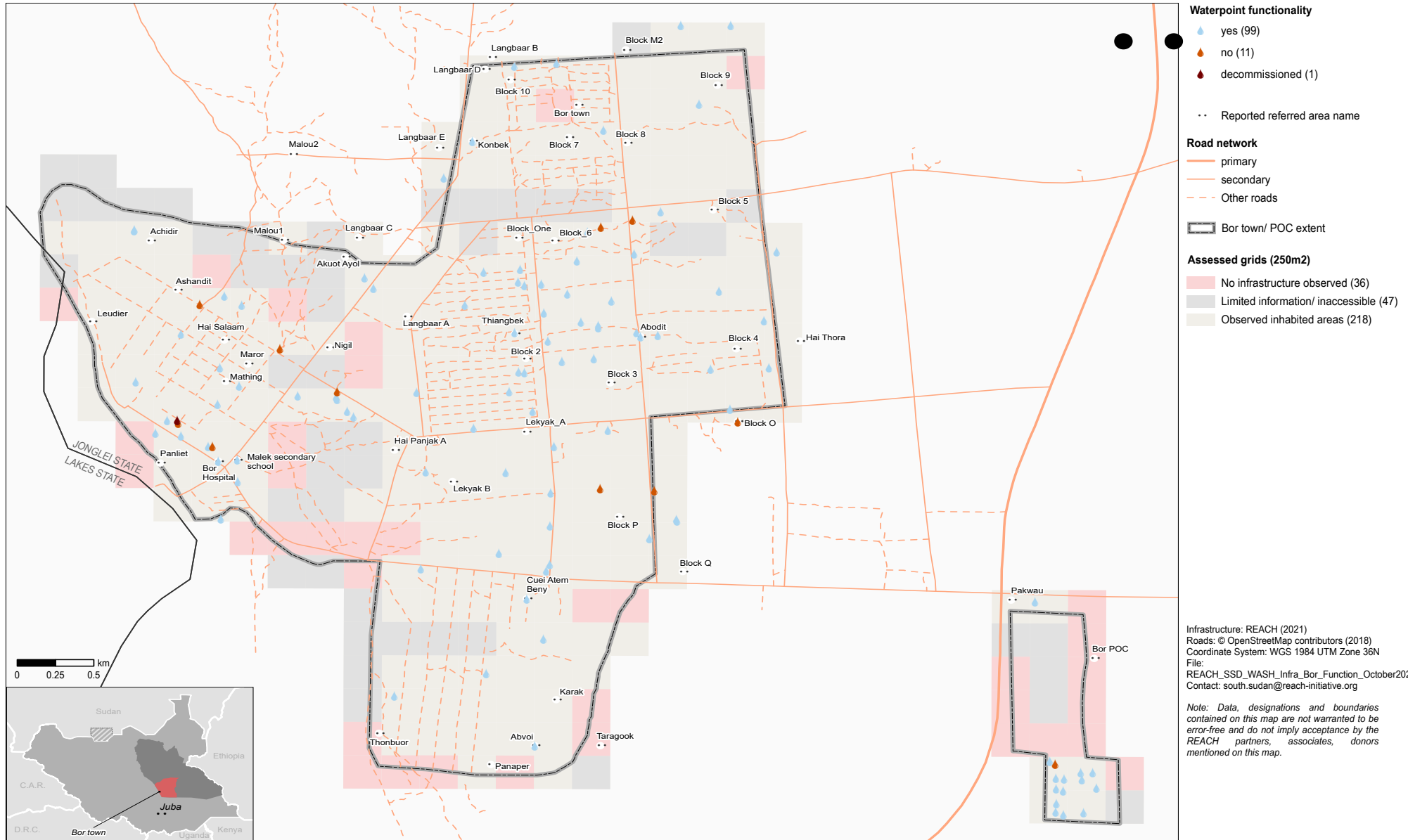


Infrastructure: REACH (2021)  
 Roads: © OpenStreetMap contributors (2018)  
 Coordinate System: WGS 1984 UTM Zone 36N  
 File:  
 REACH\_SSD\_WASH\_Infra\_Bor\_Coverage\_October2021  
 Contact: south.sudan@reach-initiative.org

*Note: Data, designations and boundaries contained on this map are not warranted to be error-free and do not imply acceptance by the REACH partners, associates, donors mentioned on this map.*



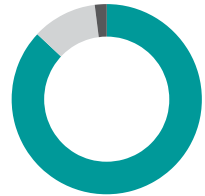
### Bor Town Waterpoints functionality Map



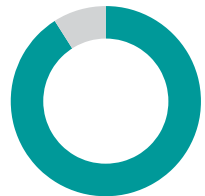
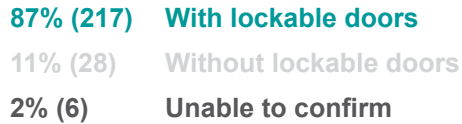


### Sanitation

#### Latrine by type



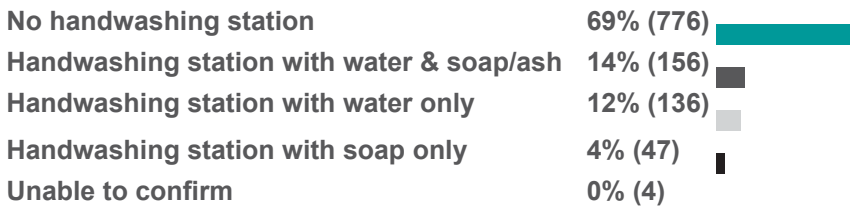
#### Latrine with lockable doors



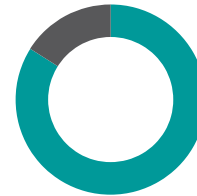
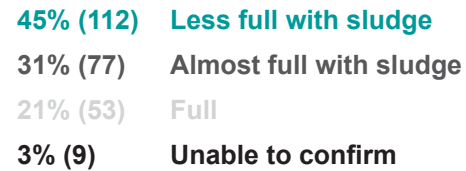
#### Accessibility to latrine



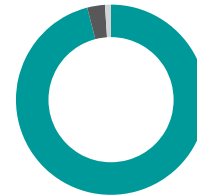
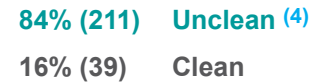
#### Functional handwashing station at latrine



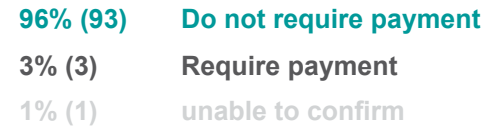
#### Estimated latrine sludge level



#### Latrine by cleanliness



#### Latrine requiring payment



footnotes

- ( ) numbers in parenthesis indicate number of facilities assessed
- A water point is **unsafe** to drink when it is contaminated by faecal matter (e.g. H2S test result turn black) and a water point is **safe** to drink when it is free from faecal contamination (e.g. H2S test result do not turn black) (WHO,2017)
- Improved** water source is the water source that, by its nature of its design and construction is likely to be protected from faecal contamination (e.g. boreholes, protected wells, storage tanks, water kiosks and piped systems) and **Unimproved** water source is the water source that is likely to be contaminated by faecal matter (e.g. unprotected well, unprotected springs, unequipped borehole etc) (JMP,2020)
- A latrine was considered unclean when faeces were found on it(JMP,2020).
- A communal/institutional latrine refers to latrines found in public areas such as NGOs compounds, schools, churches/mosques etc. (JMP,2020)
- A family latrines refer to latrines used by a particular household with full latrine ownership, construction and maintenance (JMP,2020)
- Shared latrines refer to those used by a number of households, who are all responsible for care and maintenance (JMP,2020)