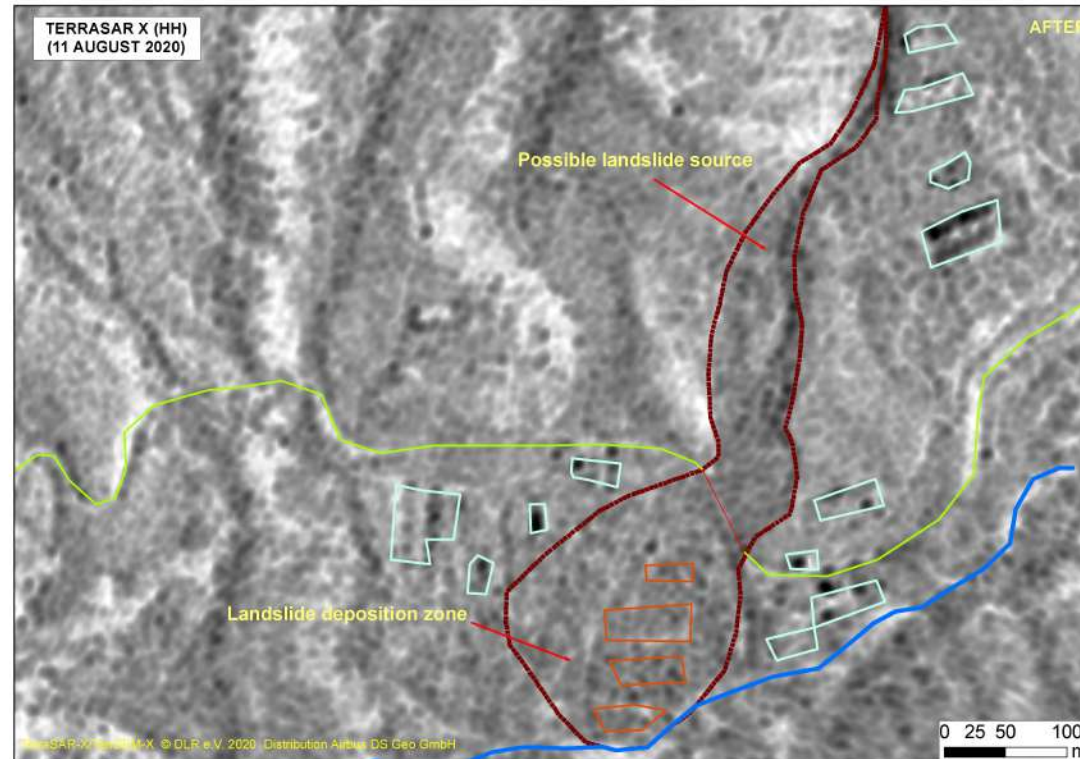
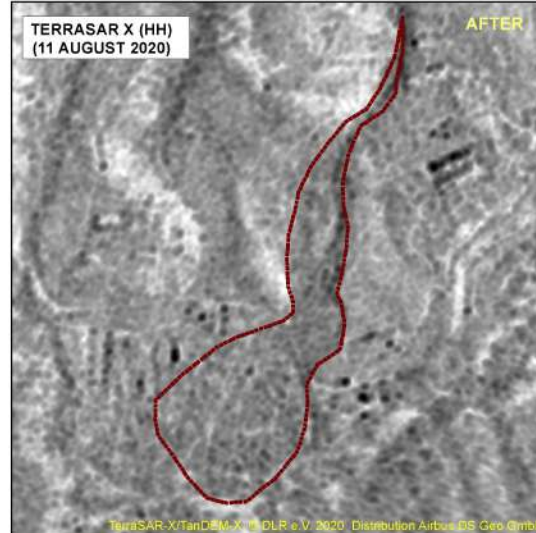


Pettimudi Landslide (6th August 2020) Idukki district, Kerala

Based on the analysis of TerraSARX microwave satellite data



DISASTER EVENT ID: 01-LS-2020-Kerala
MAP ID: 2020/01

Date of Issue :12.08.2020

Location Map



About the Event

The incessant rainfall evoked a devastating landslide incidence on 6th August 2020 around 23:00hrs in Pettimudi area near Munnar in Idukki District, Kerala. The area is located at 10° 9' 39.76"N latitude and 77° 0' 39.51"E longitude. The hill slopes in this area have thick soil cover, which makes it prone to landslide after heavy rainfall. (source: GSI)

Satellite Observations

Post event satellite image from TerraSAR-X was analysed in affected region. Preliminary observations suggest a large debris flow. It is also seen that 4 houses are completely damaged by the landslide. Results will be further confirmed using optical imagery when available.

Satellite data used

| | |
|--|--|
| Pre Landslide: Satellite: Worldview 2 Sensor : MSI Date of Pass: 05-December-2019 | Post Landslide: Satellite: TerraSAR -X HH Polarization Date of Pass: 11-August-2020 |
|--|--|

Other data used

NDEM Base layers

Legend

- Stream
 - Probable Debris flow zone (to be confirmed from optical data)
- | Road | House |
|--|--|
| — Damaged | Complete Damage |
| — Undamaged | Un/Low Damage |



Disclaimer

This product is prepared on rapid mapping mode for immediate use and sharing amongst official agencies. This provides preliminary results. There could be more landslides in this area.

All geographic information has limitations due to the scale, resolution, cloud cover, date and interpretation of the original source materials.

No ground verification is done.

Note: When publishing this map as part of any report, source may be indicated as "Pettimudi Landslide (6th August 2020), Idukki district, Kerala" dated 12.08.2020 Map no : 2020/01, NRSC/ISRO, Hyderabad