

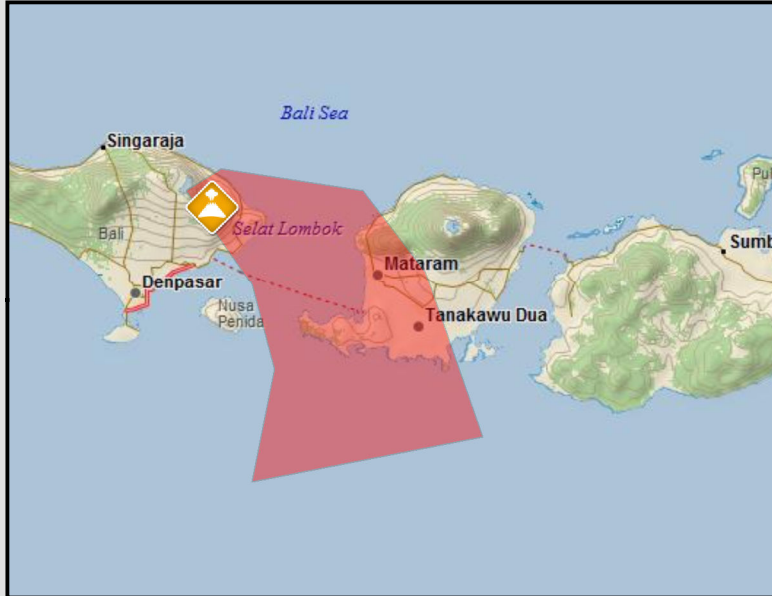
# Volcano Warning - Agung Volcano, Indonesia

Issued time: 30 November 2017 0100 UTC by Darwin VAAC

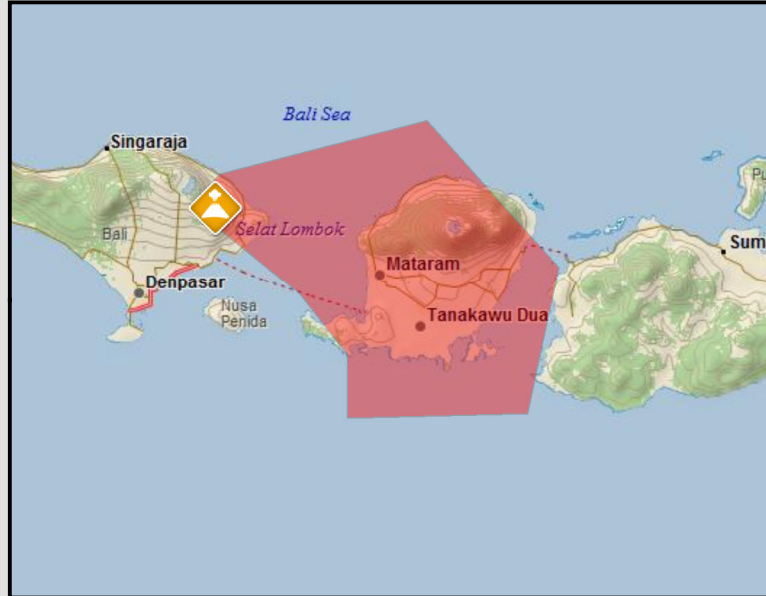
VAAC ASH ADVISORY SUMMARY: CONTINUOUS VOLCANO ASH EMISSION TO FL210. VOLCANO ASH CURRENTLY NOT IDENTIFIABLE ON SATELLITE IMAGERY. ERUPTION IS STILL ONGOING AND OBSERVED ON WEBCAM. VOLCANO ASH HEIGHT AND MOVEMENT BASED ON HIMAWARI-8 IMAGERY, MODEL GUIDANCE, WEBCAM, PILOT REPORT AND GROUND REPORT.

## Volcano Ash Movement Forecast

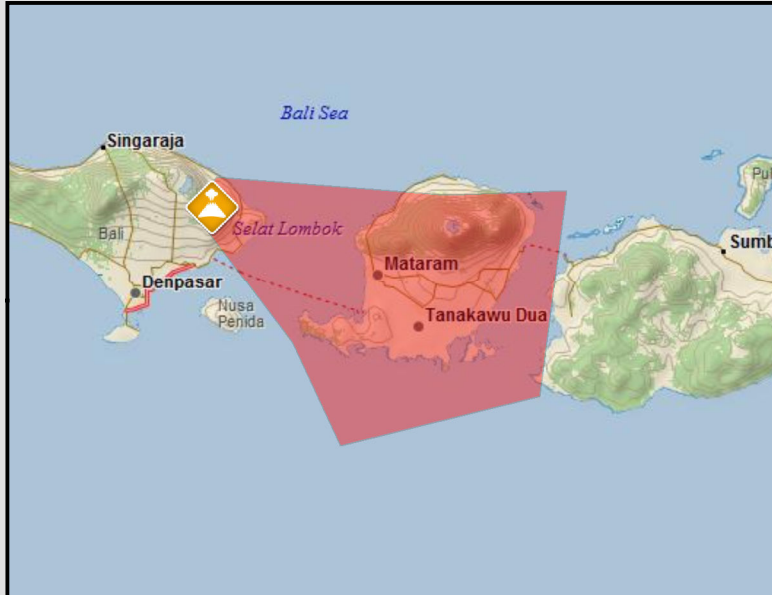
Forecast Time: 2017/11/30 01:00 UTC



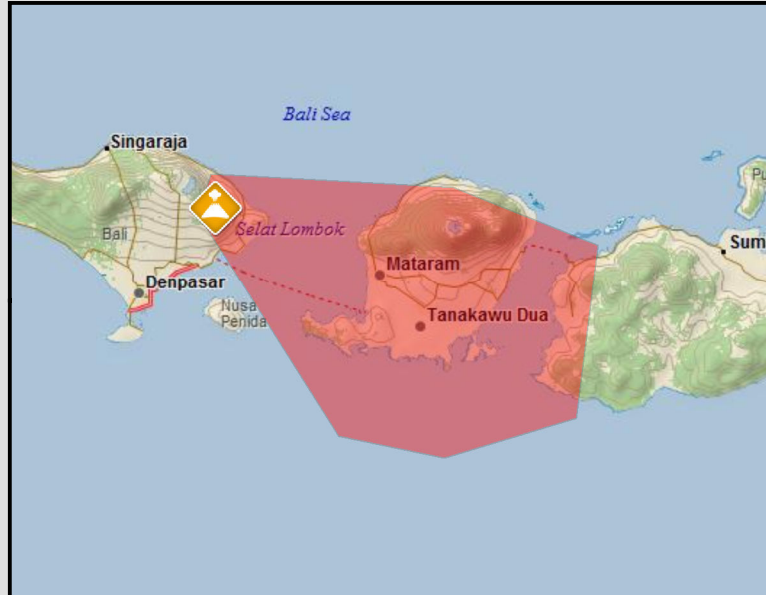
Forecast Time: 2017/11/30 07:00 UTC



Forecast Time: 2017/11/30 13:00 UTC



Forecast Time: 2017/11/30 19:00 UTC



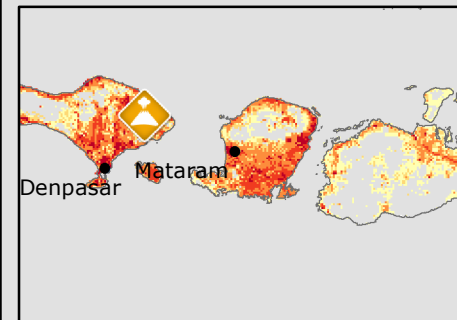
### Aviation Color Code: RED

Explanation: eruption is forecast to be imminent with significant emission of ash into the atmosphere likely, or eruption is underway with significant emission of ash.

### Ash Cloud Areas and Altitudes

- 21000 ft (6401m)
- Volcano Location

### Population Density



- |   |  |
|---|--|
| <span style="background-color: white; border: 1px solid black; display: inline-block; width: 15px; height: 15px;"></span> 0 - 5   | <span style="background-color: orange; border: 1px solid black; display: inline-block; width: 15px; height: 15px;"></span> 101 - 500 |
| <span style="background-color: yellow; border: 1px solid black; display: inline-block; width: 15px; height: 15px;"></span> 6 - 50 | <span style="background-color: red; border: 1px solid black; display: inline-block; width: 15px; height: 15px;"></span> 501 - 2,500  |
| <span style="background-color: gold; border: 1px solid black; display: inline-block; width: 15px; height: 15px;"></span> 51 - 100 | <span style="background-color: darkred; border: 1px solid black; display: inline-block; width: 15px; height: 15px;"></span> > 2500   |