

# Super Typhoon Nock-ten - Estimated Impacts

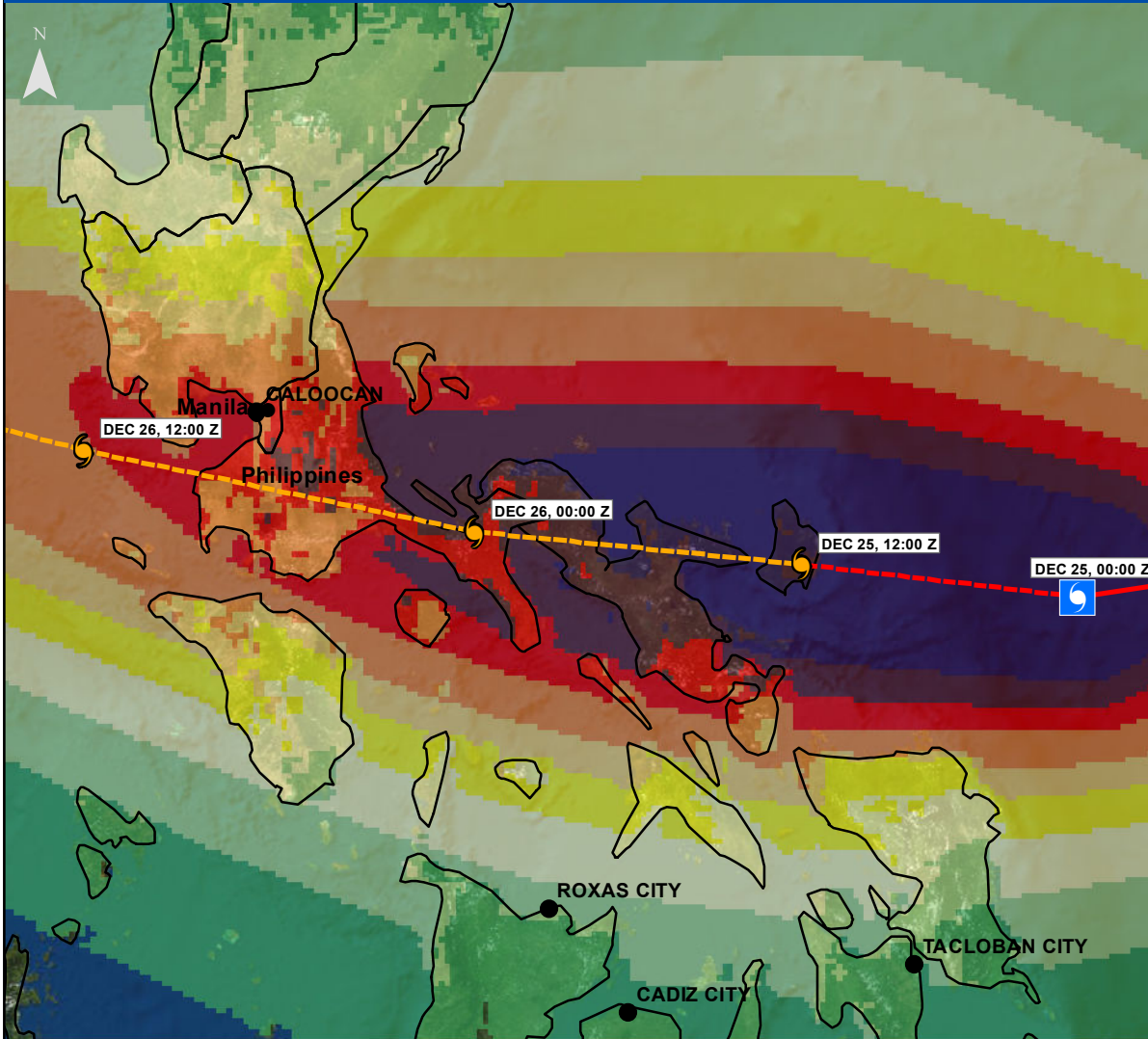
## Warning 16, 25 December 2016 0300 UTC

PDC30W - 16A



JTWC Summary: SUPER TYPHOON 30W (NOCK-TEN), LOCATED APPROXIMATELY 298 NM EAST-SOUTHEAST OF MANILA, PHILIPPINES, HAS TRACKED WESTWARD AT 07 KNOTS OVER THE PAST SIX HOURS. MAXIMUM SIGNIFICANT WAVE HEIGHT AT 250000Z IS 44 FEET. NEXT WARNINGS AT 250900Z, 251500Z, 252100Z AND 260300Z.

### Estimated Wind Impacts

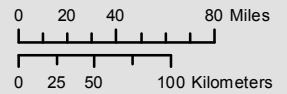


### Tropical Cyclone Positions

- Hurricane/Typhoon >150 mph
- Hurricane/Typhoon > 74 mph
- Tropical Storm: 39-73 mph
- Tropical Depression: <39 mph
- Current Storm Position

### Est Wind Impacts (TAOS)

- Small Trees Sway
- Large Trees Sway
- Branches Breaking
- Trees Down; some power loss
- Minor Damage; power out
- Moderate Damage 5% of value
- Widespread Damage
- Severe Damage
- Catastrophic Damage

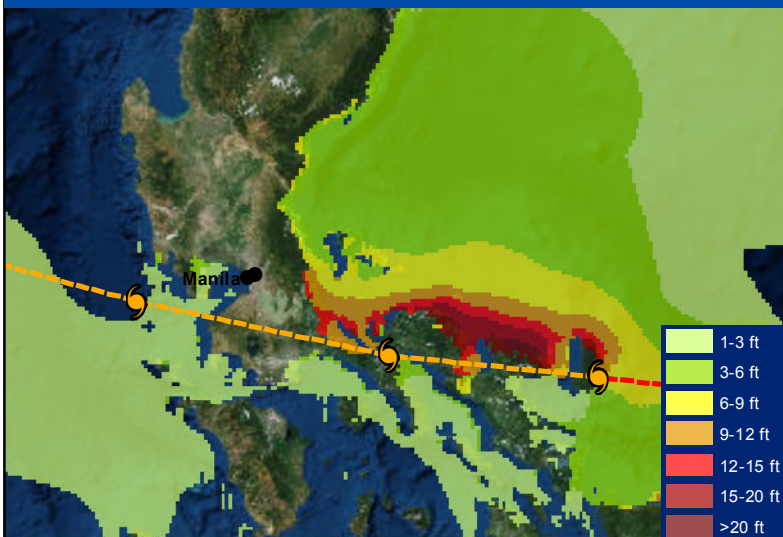


The delineation of political boundaries, and associated data shown here do not imply endorsement by the Pacific Disaster Center.

Produced By: Pacific Disaster Center  
 Product Created: 12/25/2016  
 Data: NOAA, TAOS Estimated Wind Impacts, Estimated Tropical Cyclone Rainfall, and Estimated Still Water Storm Surge forecasted by Kinetic Analysis Corporation  
 Other Data: ESRI  
 Projection: Mercator Datum WGS84

<http://www.pdc.org> - [response@pdc.org](mailto:response@pdc.org)

### Estimated Still Water Storm Surge (TAOS)



### Estimated Tropical Cyclone Rainfall (TAOS)

