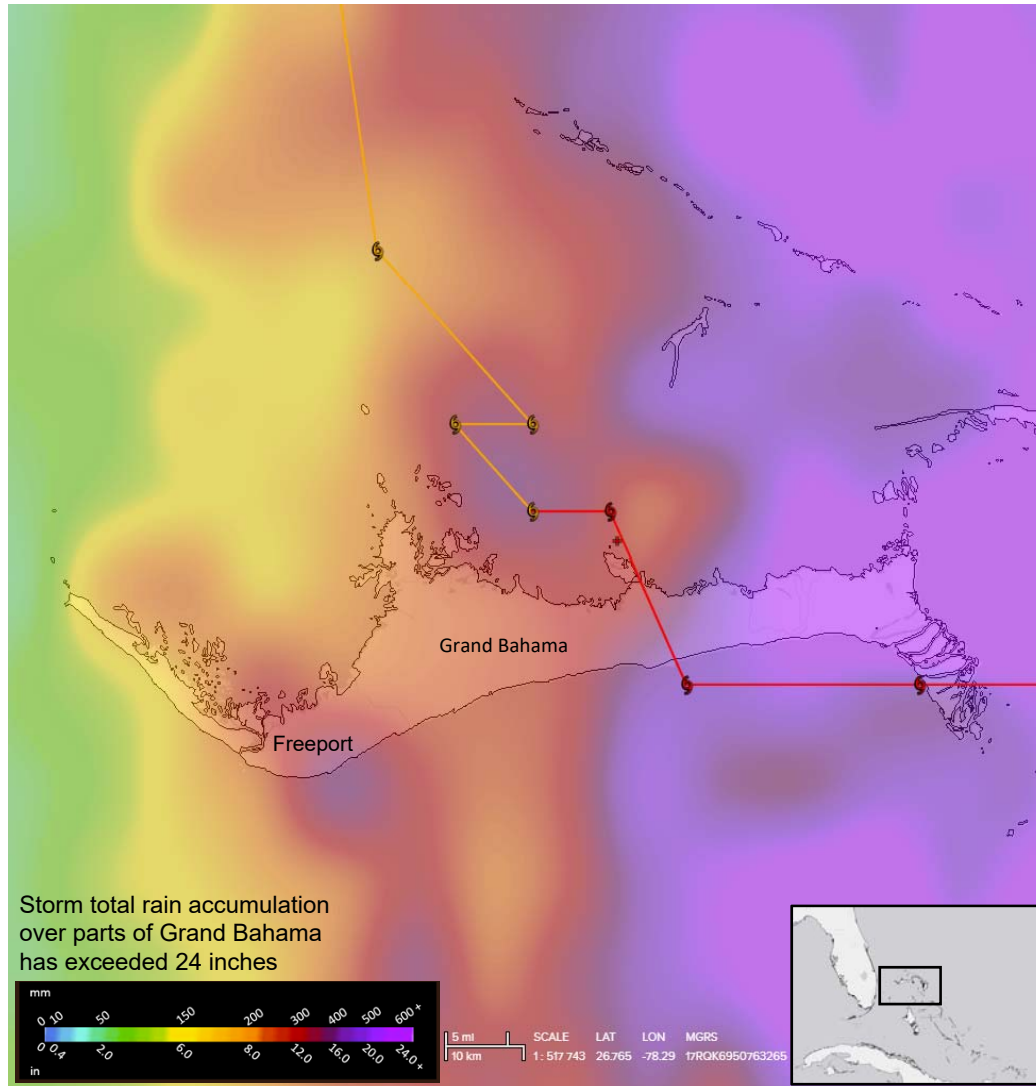


# The Bahamas

## Hurricane Dorian: Grand Bahama

### Modeled Preliminary Loss Estimates

For Planning Purposes Only (04SEPT19)



### Maximum potential population exposure



**59,883**

people exposed to catastrophic wind damages

### Breakdown of potential needs



**119,766**

meals ready to eat per day



**5,988**

25-gallon waste bins



**59,883**



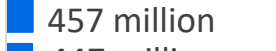


gallons of water per day



**687,456**

square feet of shelter

### Total Capital Exposure **\$6.9 billion**

Residential		4,685 million
Service Sector		1,351 million
Industrial		457 million
School		447 million
Hospital		5 million