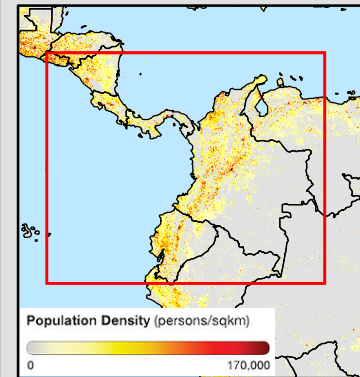
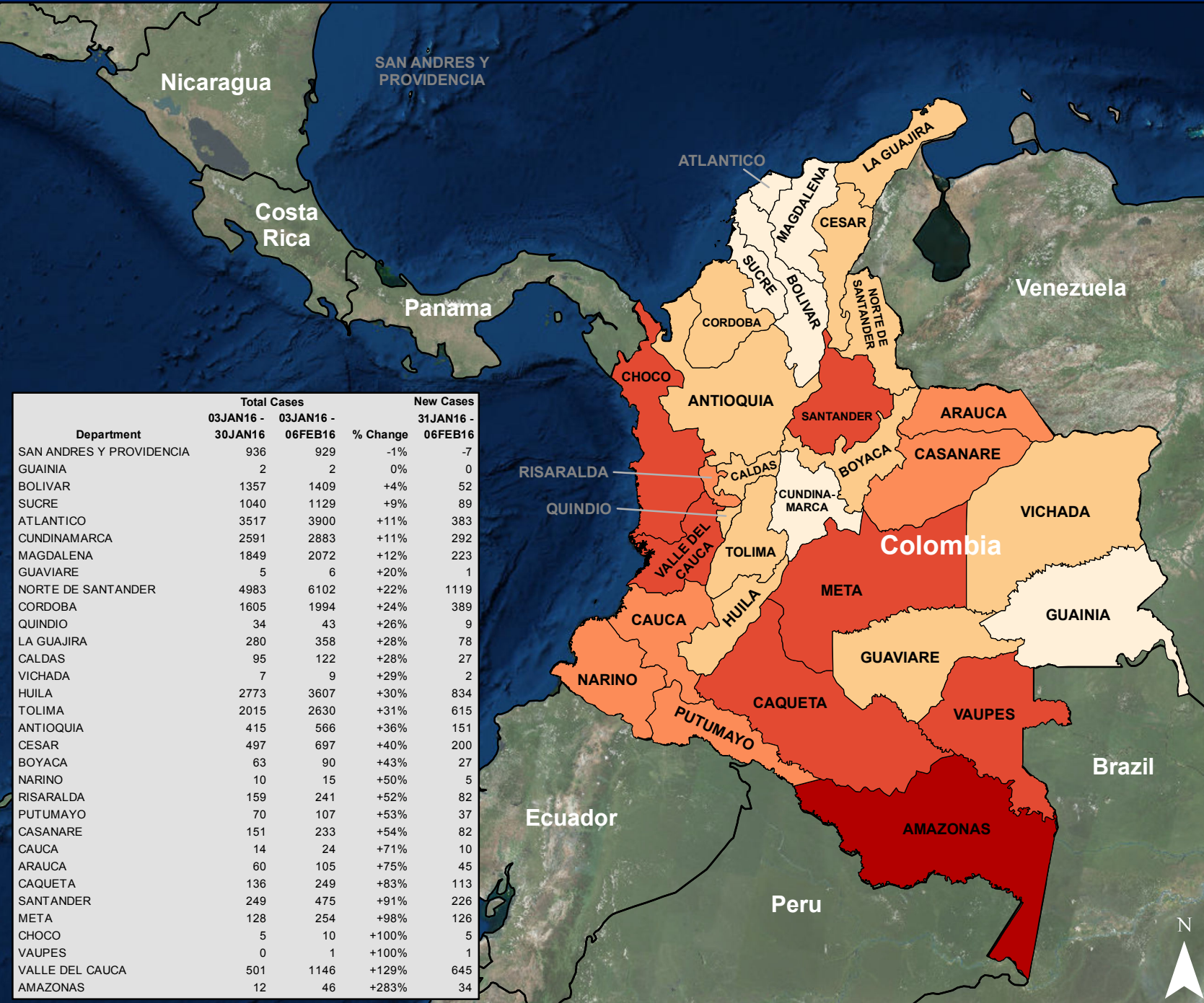


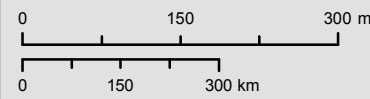
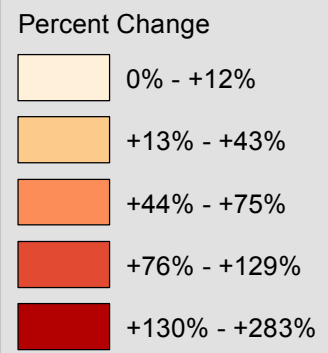
Colombia - Percent Change in Zika Cases by Department

30 January - 06 February 2016

PDC - COLZIKA001D



Department	Total Cases		% Change	New Cases
	03JAN16 - 30JAN16	03JAN16 - 06FEB16		
SAN ANDRES Y PROVIDENCIA	936	929	-1%	-7
GUAINIA	2	2	0%	0
BOLIVAR	1357	1409	+4%	52
SUCRE	1040	1129	+9%	89
ATLANTICO	3517	3900	+11%	383
CUNDINAMARCA	2591	2883	+11%	292
MAGDALENA	1849	2072	+12%	223
GUAVIARE	5	6	+20%	1
NORTE DE SANTANDER	4983	6102	+22%	1119
CORDOBA	1605	1994	+24%	389
QUINDIO	34	43	+26%	9
LA GUAJIRA	280	358	+28%	78
CALDAS	95	122	+28%	27
VICHADA	7	9	+29%	2
HUILA	2773	3607	+30%	834
TOLIMA	2015	2630	+31%	615
ANTIOQUIA	415	566	+36%	151
CESAR	497	697	+40%	200
BOYACA	63	90	+43%	27
NARINO	10	15	+50%	5
RISARALDA	159	241	+52%	82
PUTUMAYO	70	107	+53%	37
CASANARE	151	233	+54%	82
CAUCA	14	24	+71%	10
ARAUCA	60	105	+75%	45
CAQUETA	136	249	+83%	113
SANTANDER	249	475	+91%	226
META	128	254	+98%	126
CHOCO	5	10	+100%	5
VAUPES	0	1	+100%	1
VALLE DEL CAUCA	501	1146	+129%	645
AMAZONAS	12	46	+283%	34



Information regarding cases and transmission are based on Epidemiological Weeks 01-05 for 2016. Total cases are laboratory confirmed, clinic confirmed, and suspected Zika cases.

The delineation of political boundaries, and associated data shown here does not imply endorsement by the Pacific Disaster Center.

Produced By: PDC Disaster Services Team
 Product Created: 2/19/2016
 Data: Instituto Nacional De Salud
 Other Data: ESRI, US Government, Oak Ridge National Laboratory
 Projection: Mercator Datum WGS84

<http://www.pdc.org> - response@pdc.org

