



What is the MIMU Assessment Tracking?

The MIMU Assessment Tracking¹ gathers information on assessments, surveys, reports and publications (“Assessments”) focused on humanitarian, development and peace-related issues and activities in Myanmar. It allows agencies, government counterparts, researchers and donors to share resources developed for particular initiatives (results, methodologies, questionnaires and data), to benefit from the knowledge and learning of other agencies and assessment initiatives, to coordinate information gathering and to avoid duplication or gaps in assessment coverage.

What does it include?

The MIMU Assessment Tracking includes details on:

- Implementing agencies (WHO)
- Sector / topics covered (WHAT)
- Geographic coverage (WHERE)
- Assessment status – whether planned, ongoing or completed (WHEN)
- Methods used for information gathering (HOW)

Which products will be available and how they can be accessed(AVAILABLE RESOURCES)

Most Assessment records are public however the Assessment Tracking also includes “restricted” records which are not public but can be followed up with the concerned agency.

How can I upload and view information on assessments and publications?

Agencies add and update their own Assessment records as the activity progresses, updating the initiative status from planned → ongoing → completed, along with detail of the geographic and sector coverage, anticipated products etc. Information can be uploaded online through the MIMU website (www.themimu.info/assessments-and-publications), or offline by submitting the [Assessment Tracking Excel sheet](#) to the MIMU team.

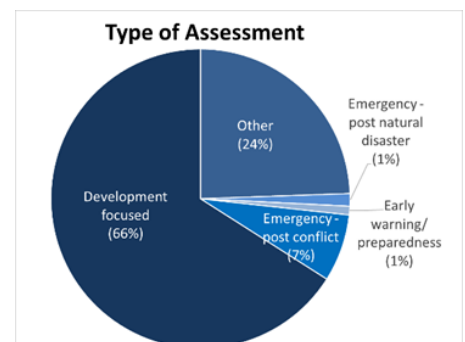
Uploaded Assessment records appear on the [MIMU Assessment Tracking Dashboard](#), and in the Excel Assessment Listing. Agencies can also share their final Assessment reports and publications through the MIMU website. If your agency’s Assessment is not visible in the Dashboard or Assessment Listing, it may not yet have been registered in the MIMU Assessment Tracking tool, or may be registered as “restricted”, in which case the full details of the Assessment record are not made public.

Overview of reported Assessments as of 6th August 2021

As of 6th August 2021, 1,923 Assessments were reported as undertaken or planned between 2005 and 2023. This includes 112 COVID-19 related initiatives.

These Assessments were reported by 190 organisations – namely 76 INGOs, 18 UN agencies, 31 local NGOs, 20 International Organization, 14 Donors/ Embassies, 9 Government, 1 Red Cross agency, 1 CBO and 20 Others.

1,269 (66%) of the reported Assessments are development-focused; most were conducted Countrywide, in Yangon, Mandalay, Ayeyarwady, and Magway. 470 (24%) of recorded Assessments focus on “other” purposes such as annual reports, the MIMU 3W, guidelines and specific sector surveys; the focus in this case is mainly Countrywide, Rakhine, Kayin, Mon or Yangon. 140 (7%) of the reported Assessments emergency post-conflict initiatives, primarily on Rakhine, Kachin and Shan (North).



¹ The MIMU Assessment Tracking tool collates records provided by implementing agencies. Inclusion of a document in this listing does not imply endorsement of its contents by the MIMU or the United Nations.

COVID-19 Related Assessments

112 COVID-19 related Assessments have been reported by 18 agencies, namely IFPRI, IOM, HELVETAS, FAO, RI, UN Women, TAF, CARE, CPI, Un-Habitat, ILO, MC, NAG, UNFPA, UNICEF, VNGI, WHH, WV.

Who?

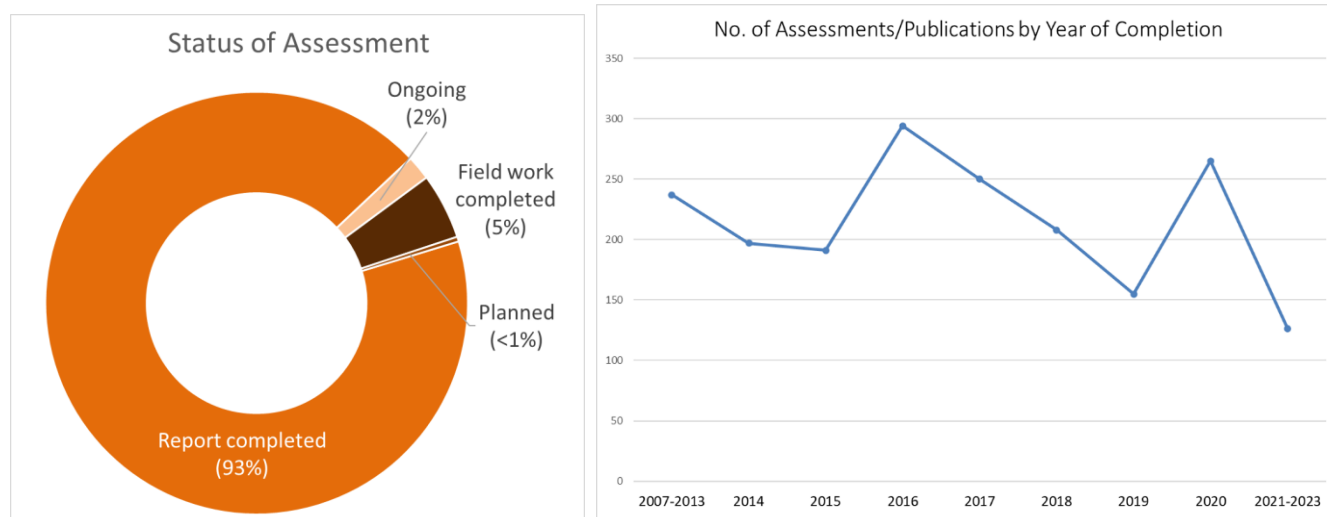
To date, 13 agencies have contributed 50% of the Assessments, namely UNOPS, RI, IFPRI, SCI, UNFPA, MKE, HELVETAS, MCRB, UNOCHA, UNHCR, UN-Habitat, UNDP and MIMU.

Number of Assessment Records and their Status by Organisation Type

Reporting Organization	# of Orgs.	# of Assessment Records	Report Status			
			Report completed	Ongoing	Field work completed	Planned
CBO	1	1	1			
Donor/Embassy	15	52	51		1	
INGO	76	827	772	14	35	6
IO	18	47	45	1	1	
NNGO	33	174	147	6	21	
Red Cross	1	3	2		1	
Government	9	31	31			
UN	18	763	709	15	38	1
Other	19	25	25			
Grand Total	190	1923	1783	36	97	7

When?

36 assessments/publications were listed as “ongoing” as of August 2021. A further 1,783 Assessments are recorded as fully completed and 97 are near completion with the field work completed.

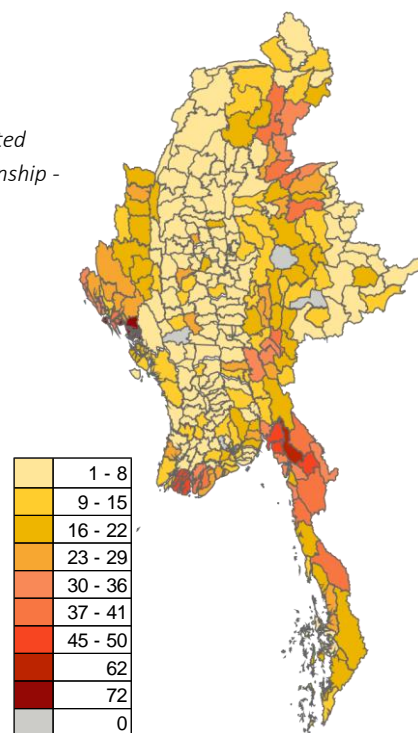


Where?

40% of the reported assessments/publications have been done for countrywide level, followed by Rakhine (15%), then those in Yangon, Mandalay, Ayeyarwady, Kayin, Shan (North), Mon and Shan (South). Areas with the least reported assessments/surveys to date are Nay Pyi Taw and Bago (West).

State/Region	Total No. of Assessments/Publications
Ayeyarwady	200
Bago (East)	159
Bago (West)	59
Chin	106
Country-wide	774
Kachin	154
Kayah	104
Kayin	195
Magway	170
Mandalay	201
Mon	184
Nay Pyi Taw	23
Rakhine	279
Sagaing	154
Shan (East)	99
Shan (North)	191
Shan (South)	176
Tanintharyi	111
Yangon	225

Distribution of reported Assessments by Township - 2005-2023



Sector	Country-wide	Ayeyarwady	Bago (East)	Bago (West)	Chin	Kachin	Kayah	Kayin	Magway	Mandalay	Mon	Nay Pyi Taw	Rakhine	Sagaing	Shan (East)	Shan (North)	Shan (South)	Tanintharyi	Yangon	Grand Total
Agriculture	125	31	30	7	21	19	22	30	27	33	34	3	23	32	15	17	38	21	15	300
Aid Information	19	1	8			16	8	8			8		18			16	9	8		46
CCCM	6					23							21			23				34
Coordination	29	1	1		2	25			2	2	2		30	1		19			1	71
Disaster Risk Reduction	19	7	12	3	12	5	1	10	9	8	6		11	12	3	2	2	4	7	90
Economic Infrastructure	29	3	6	3	2	1	3	3	3	4	5		2	5	2	2	3	2	2	46
Education	18	10	14		5	13	29	30	14	8	24	1	25	4	5	16	8	17	12	119
Environment	52	11	12	5	4	4	1	1	18	21	9	1	1	18			6	5	8	99
Food	17	4	18	1	6	31	22	26	7	5	28		31	7	4	26	15	23	3	108
Gender	63	3	3	1	7	35	4	13	7	10	9	1	28	5	5	21	8	2	9	138
Governance	77	26	35	20	17	25	10	13	27	20	15	1	10	21	2	8	26	6	35	162
Health	255	54	41	19	23	41	27	59	26	41	47	4	55	21	16	55	34	36	55	541
Infrastructure	16	2	5		1	2	5	5	2	3	5		1	5		2	1	5		34
Logistics	12				1	24		1	1	2	1		21	1	1	17	1			44
MineAction			6				9	7			7							7		12
Multi Sectors	72	5	9	4	4	9	16	16	5	6	14	1	11	4	6	4	10	13	4	121
NFI	6	1	2			20	8	9	2	1	10		23	1	1	24	1	8	1	52
Non-Agricultural Livelihoods	31	15	27	5	13	33	17	19	13	16	28		36	16	7	28	19	16	9	138
Nutrition	49	17	18	2	10	31	18	21	10	12	19		54	13	8	30	19	14	15	180
Other	186	71	21	8	24	13	19	58	52	65	57	10	57	48	44	50	56	38	76	425
Peace Building / Conflict Prevention	42		3	1	4	7	6	9		3	12		6		3	6	7	4	5	72
Private Sector Development	39	4	5		1			1	3	4	5		1	2	1		1	2	11	62
Protection	33	12	28	3	10	32	32	38	16	15	39	2	65	7	7	45	17	28	19	191
Shelter	7		14		1	33	23	23	3	2	23		29	1	1	26	11	22	1	86
Tourism	3	20	2	1	1	1	2	19	19	18	18		18	19	18	18	21	18	19	29
WASH	23	23	26	19	23	57	21	24	25	28	18		71	28	4	31	25	16	26	191

What?

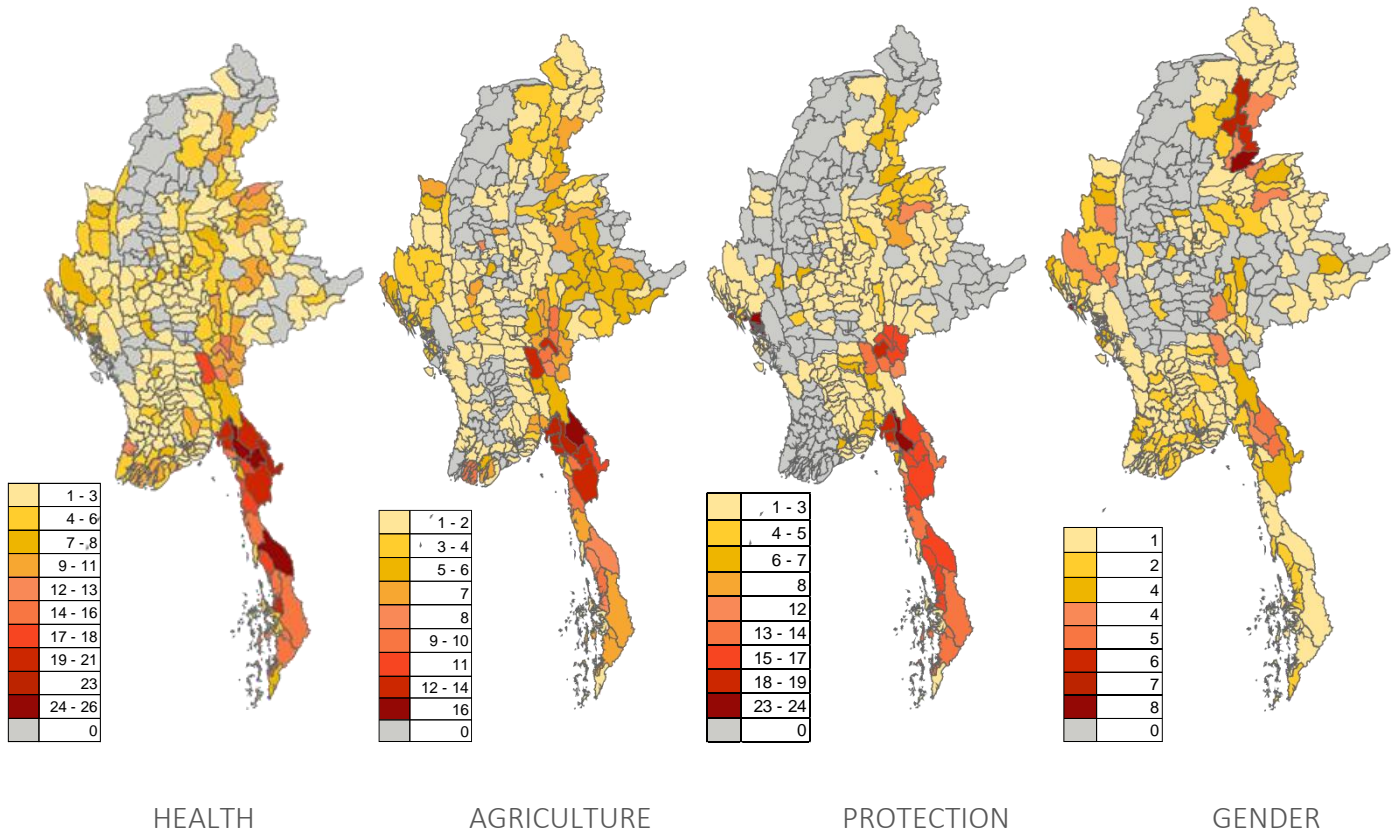
Health has been the most frequently reported assessments/publications sector over the 2005-2023 period, followed by Agriculture, Protection, WASH, Governance, Nutrition, Non-Agricultural Livelihoods, Gender, Multi- Sectors, Environment, Food, Education, DRR, and Shelter.

“Other” refers to reported initiatives which do not readily fit the sector definitions, namely Transportation, Mining, Migration and Development, Early Recovery, Human Rights, Oil and Gas, ICT, Business and Cash-focused Interventions.

67% of the total reported Assessments are publicly available, and 17% are available from the reporting agency on request.

Sector (s) Covered	Public	Total
Agriculture	297	300
Aid Information	46	46
CCCM	33	34
Coordination	65	71
Disaster Risk Reduction	88	90
Economic Infrastructure	42	46
Education	100	119
Environment	97	99
Food	96	108
Gender	131	138
Governance	153	162
Health	498	541
Infrastructure	33	34
Logistics	43	44
Mine Action	11	12
Multi Sectors	121	121
NFI	49	52
Non-Agricultural Livelihoods	134	138
Nutrition	143	180
Other	417	425
Peace Building / Conflict Prevention	72	72
Private Sector Development	61	62
Protection	172	191
Shelter	83	86
Tourism	29	29
WASH	172	191

Sector Distribution of Assessments 2005-2023 for Which Township is Reported



How to add or update your Assessments and Publications?

1. Start by reading [the guidelines](#) to correctly register your Assessments on MIMU's Assessment Tracking:
2. To submit an Assessment offline, please fill in the [MIMU Assessment Registry Entry Form](#) and email it to assessment@themimu.info.
3. To submit or edit an Assessment online, please click the link below. Please note that newly added or edited Assessments will be subject to review by MIMU prior to being published/updated on the website. [Login/Register to submit assessment](#)

MIMU Assessment Tracking Products

The three main products of the MIMU Assessment Tracking are as follows:

1. **Assessment Tracking Data (Excel)** – updated every 3 months.
Lists the records for all reported publicly available Assessments – includes who, what, where, when, how the initiative was conducted, availability of the tools and data produced through the Assessment and key contact persons for follow-up.
<http://www.themimu.info/assessments-and-publications>
2. **Assessment Tracking Dashboard (MIMU website)** – updated every 6 months.
Interactive dashboard allowing users to search reported Assessments by where (state/region), when (year), what (sector), and status (completed, planned etc.).
<http://www.themimu.info/assessment-dashboard>
3. **Assessment Tracking Overviews (PDF documents)** – updated every six months
MIMU produces this short narrative update and a shorter “One Pager” to draw out information on the reported assessments.

Please share your feedback to help us make the MIMU Assessment Tracking tool and this Overview as useful as possible assessment@themimu.info

Prepared by MIMU,
August 29, 2021

