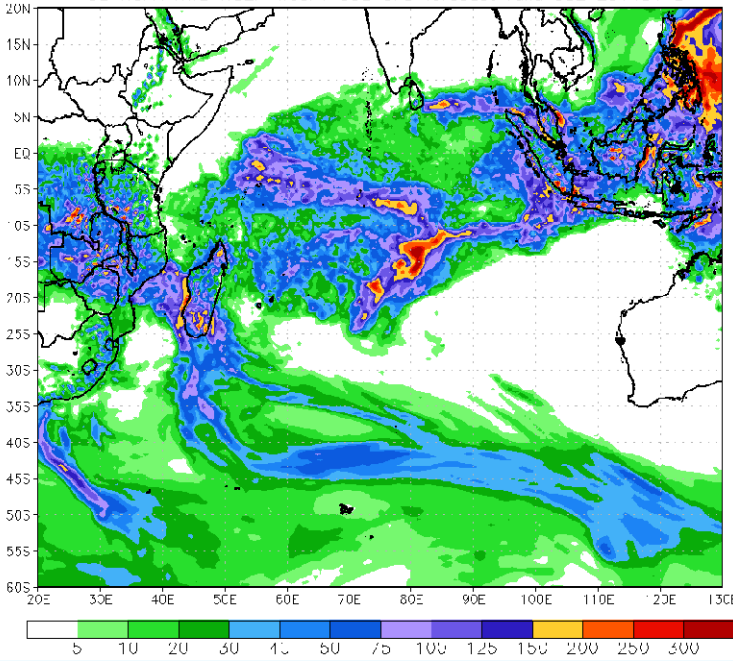


Week 1 Total Precipitation (in mm)

US NOAA NWS NCEP Week 1 OZ GFS forecast: valid 02Z 20140108



District	Estimated Population
Morombe	112,995
Toliary	253,710
Sakaraha	107,146
Betioky Atsimo	197,104
Ampanihy ouest	296,076
Beloha	105,023
Total Population	1,072,054

Miandrivazo	125,549
Belo Sur Tsiribihy	119,162
Mahabo	135,866
Morondava	115,772
Manja	72,037
Total	568,386

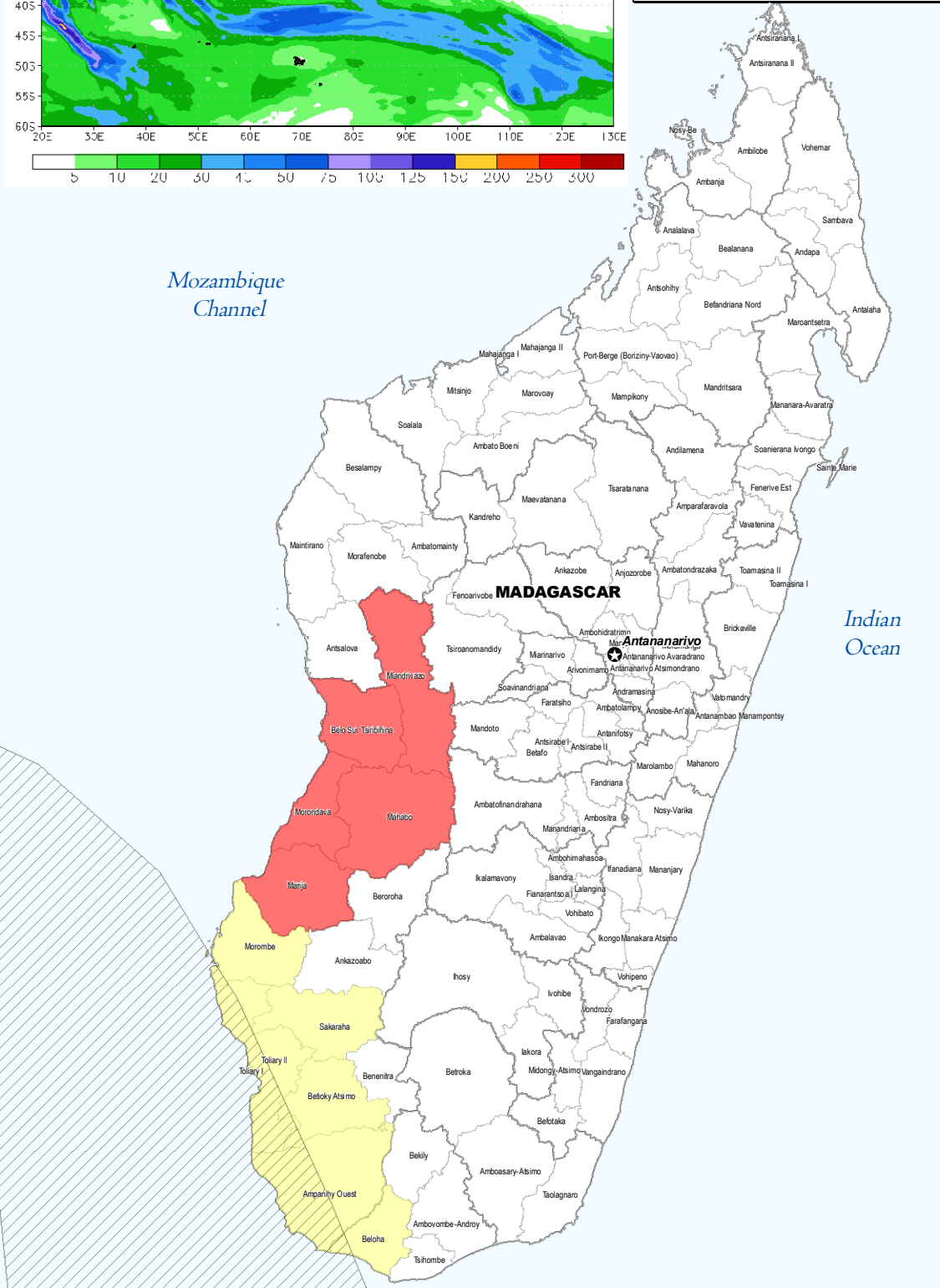
Legend

- District Boundaries
- Tropical Storm Path
- Districts on Path of Depression
- Red Alert Districts

NOTE: Madagascar's National Bureau for Risk and Disaster Management (BNGRC) has issued a Red Alert (imminent danger) for heavy rainfall over west-central Madagascar and a yellow alert (threat) for much of the rest of south-central Madagascar. A total of 205 people have already been evacuated to places of safety in the district of Morondava for whom food has been provided by authorities. Warnings are being issued to communities at risk.

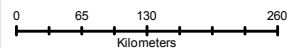
Mozambique Channel

Indian Ocean



Map ID: ROSA 365 V01

Creation Date: 8 January 2014
 Projection/Datum: WGS84 Geographic
 Web Resources: <http://www.unocha.org/rosa>
 Nominal Scale at A4 paper size: 1:7,500,000



Map data source(s): BNGRC, OCHA, LANDSCAN 2010, NASA, UCL, TSR, NOAA, MeteoFrance

Disclaimers: The designations employed and the presentation of material on this map do not imply the expression of any opinion whatsoever on the part of the Secretariat of the United Nations concerning the legal status of any country, territory, city or area or of its authorities, or concerning the delimitation of its frontiers or boundaries.

Map Locator

