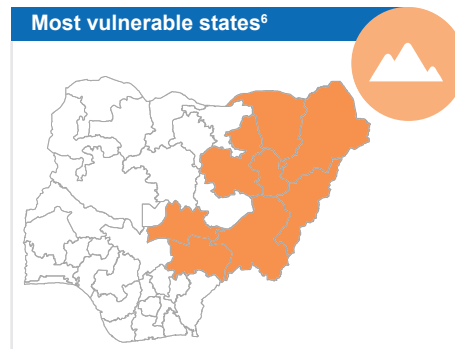
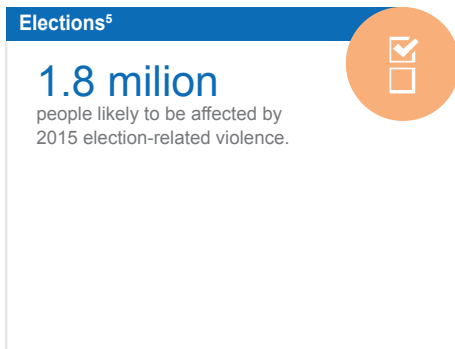
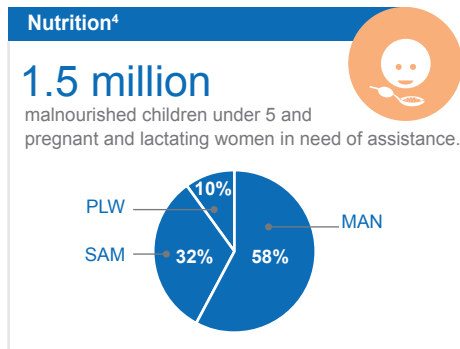
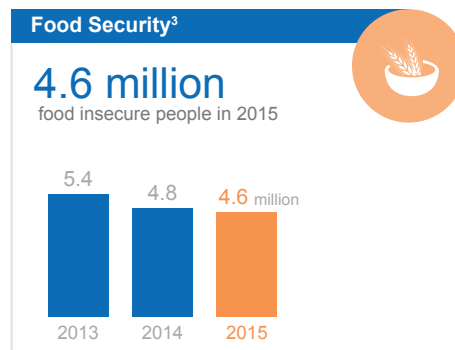
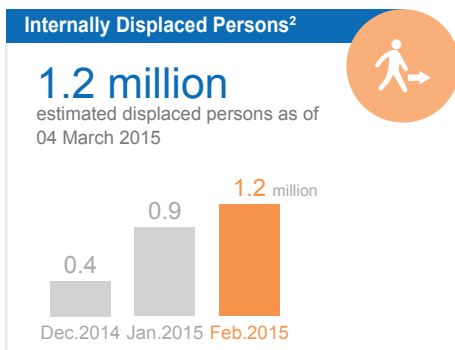


SITUATION OVERVIEW

In early March 2015, the National Emergency Management Agency (NEMA) reported that more than 1.2 million people are internally displaced within North-East Nigeria. In addition, the conflict has caused 203,000 Nigerians and stranded migrants to flee to neighbouring countries to seek safety. With the claim of towns liberated and the relatively calm security after the Presidential Elections on 28 March, an increase in spontaneous return movement to many areas is expected. However, conditions in those areas of return are believed to be quite desperate as conflict and inter-communal violence have caused widespread destruction of homes, social infrastructure and resources on which livelihoods are based. There is need for rapid assessments to recently recovered towns to inform planning and advocacy on return and resettlement issues and in providing humanitarian assistance to address the urgent needs of both displaced persons and returnees.

KEY FIGURES



CONSOLIDATED HUMANITARIAN FUNDING 2015⁷

\$ 100 million
REQUESTED (US\$)

11%
RESPONSE PLAN FUNDED

\$ 13 million
RECEIVED

- 11.4 million (US\$) for projects listed in the response plan
- 1.6 million (US\$) for projects not listed in the response plan

Requirements by cluster (million \$)

Cluster	Requirements (million \$)	Per cent funded	Funded (million \$)	Unmet (million \$)
Protection	28.4	14%	4.0	24.4
Health	17.0	4%	0.6	16.4
Nutrition	14.0	6%	0.8	13.2
Food Security	11.8	5%	0.6	11.2
Coordination	8.9	11%	0.9	8.0
WASH	8.7	13%	1.1	7.6
Education	7.8	0%	0.0	7.8
Emergency Shelter & NFI	3.8	0%	0.0	3.8

Contributions (million \$)

Japan	4.0
European Commission	3.6
Germany	2.9
Canada	1.1
Sweden	1.0
Switzerland	0.3
Denmark	0.05

Note: 3.4 million resources available, cluster not yet specified

Note: 4.3 million Pledges

STRATEGIC OBJECTIVES

- 1 Track and analyse risk and vulnerability, integrating findings into humanitarian and development programming.
- 2 Support vulnerable populations to better cope with shocks by responding earlier to warning signals, by reducing post-crisis recovery times and by building capacity of national actors.
- 3 Deliver coordinated and integrated life-saving assistance to people affected by emergencies.

PROTECTION



Needs

- Rapid assessments in recently recovered towns for planning and advocacy on return and resettlement
- Scaling up of protection presence for monitoring and referral through individual and community based protection outreaches
- Strengthening information management and IDP profiling and mapping of SGBV services for effective referral network and tracing for un-accompanied children
- Psychosocial support and counseling for survivors
- Advocacy for IDP legal/Policy framework

Response

- CHILD PROTECTION: 45,061 displaced children affected by the conflict have been reached with psycho-social support services across Borno, Yobe and Adamawa States
- SEXUAL AND GENDER-BASED VIOLENCE: 5000 dignity kits have been distributed to vulnerable women and young girls through 73 health care facilities in affected States, 4,500 kits in Borno, Yobe, Adamawa and Gombe. The health care facilities also provide clinical management of rape along with other essential sexual and reproductive health services
- Protection by Presence: Launch of Protection Monitoring activities in six States affected by internal displacement

For more information, contact: dikongue@unhcr.org

FOOD SECURITY



Needs

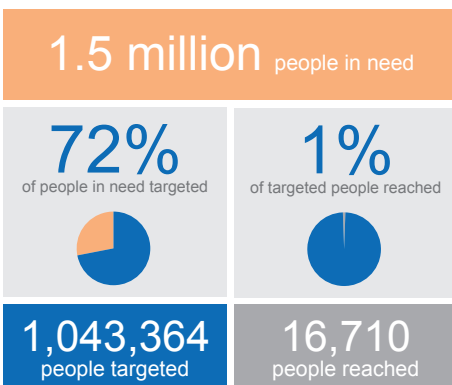
- Food support for households in Borno, Yobe and Adamawa which are in IPC 2 & 3, stressed and crisis phases. Situation expected to deteriorate during the lean season May – September 2015
- Livelihood support for income generation to access food in the markets
- Seeds for staple food crops for distribution in May 2015 in time for planting which starts in June

Response

- Continue with food support
- Mobilize funding for livelihoods and seed support. Provision of seeds particularly for production of staple foods (sorghum, millet and Maize) should be done by May to be in time for the planting season May-June

For more information, contact: louise.setshwaelo@fao.org

NUTRITION



Needs

- About 32% of the children in IDP camps require treatment for severe acute malnutrition
- Volunteers are required in both camps and host communities for undertaking weekly screening of children and to identify on a timely basis children requiring treatment
- Established CMAM treatment sites need to be strengthened and provided with supplies on a sustainable basis to avoid stock out
- Trained IYCF counsellors are required both in the camps and host communities to provide appropriate information on infant and young child feeding to both mothers of under two children, pregnant and lactating mothers

Response

- From January to March 2015, 45,442 children under five were screened in IDP camps in Adamawa and Borno states alone with 7,665 children admitted into treatment sites. In the same period, 3,699 mothers of under 2 year children were counselled on appropriate IYCF.
- In addition 5,346 children under five were admitted into treatment sites in the 3 North East states of Adamawa, Borno and Yobe outside the IDP camps. The CMAM services also are also integrated with IYCF program

For more information, contact: schitekwe@unicef.org

HEALTH



Needs

- Intensify surveillance of epidemic prone-diseases especially meningitis as some states in north-west are currently experiencing an outbreak
- Scale up emergency health services in IDP camps and host communities in Borno, Yobe and Adamawa states.
- Continues provision of sexual and reproductive health services including family planning
- Community distribution of non-prescriptive family planning commodities in IDP camps and host communities

Response

- 32,869 Women and children benefitting from high impact maternal, newborn and child health interventions in Yobe, Borno and Adamawa states
- 15,786 IDPs benefitting from emergency health services in 6 IDP camps in Adamawa, including immunization, antenatal and delivery services

For more information, contact: ruivaz@who.int

EDUCATION



Needs

- Two hundred and eighty-seven 287 teachers are required to support education demand needs for IDP Learners in the 3 states
- Continuing professional development of available teachers in child-centered and multi-grade teaching pedagogy is required towards assurance of quality delivery of education for the learners

Response

- An Education in Emergencies working group has been established in Gombe state and capacity of members built to support their coordination role in humanitarian response
- Among a new group of IDP arrivals total of (Borno - 2,438; Adamawa - 1,162; Gombe total of school have been profiled in a Phase III exercise
- School-level distribution of the school-in-a-box kits (325; Borno-100; Adamawa-100; Yobe-100; Gombe-25). In addition school bags (Borno-12,600; Adamawa-5,800; Yobe-800; Gombe-1,000) delivered to state universal basic education boards in Adamawa, Borno, Gombe and Yobe states

For more information, contact: jgiwaamu@unicef.org

EMERGENCY SHELTER AND NON FOOD ITEMS



Needs

- Provision of emergency shelter and shelter upgrade kits for currently identified shelter solutions (accompanied by appropriate training and technical support)
- Provision of life-saving NFIs such as kitchen kits, Hygiene kits, appropriate water containers, mattresses, mats, blankets and solar lamps
- Housing for vulnerable people in conflict-affected areas whose homes were damaged

Response

- Distribution of jerry cans, aqua tabs, soap, sanitary pads, potties, mosquito nets, sleeping mats, blankets, tarpaulins, rope (5,770 HH or 57,700 individuals)
- New arrival kits and Hygiene kits, voucher based distribution (6,250 HH or 62,500 individuals)
- Construction of communal tents/ Distribution of Dignity and household kits/distribution of water storage kits (18,520 individuals)

For more information, contact: ekrdzalic@iom.int

WATER, SANITATION AND HYGIENE



Needs

- Provision of potable drinking water through new/rehabilitated water sources, communal water storage and distribution including to latrine areas, solar powered water pumps, household water storage kits
- Safe and gender segregated excreta disposal facilities. Details of this include rehabilitation of non-functional latrines and construction of additional latrines and shower rooms, waste water drainage
- Clean hygienic environment to be provided through hygiene promotion, hygiene kits including disinfectants and menstrual pads, education on communal solid waste disposal

Response

- Total of 405,071 affected people benefited from WASH services provided. Of these 110,208 were served with water through rehabilitation of water points and water trucking, 52,724 people benefited from rehabilitation/construction of emergency latrines, and 350,483 people from hygiene promotion and distribution of NFI kits.
- Sector coordination meetings continues to be held in Adamawa state. Sector assessments were also conducted in Borno and Adamawa States

For more information, contact: dstolarow@unicef.org