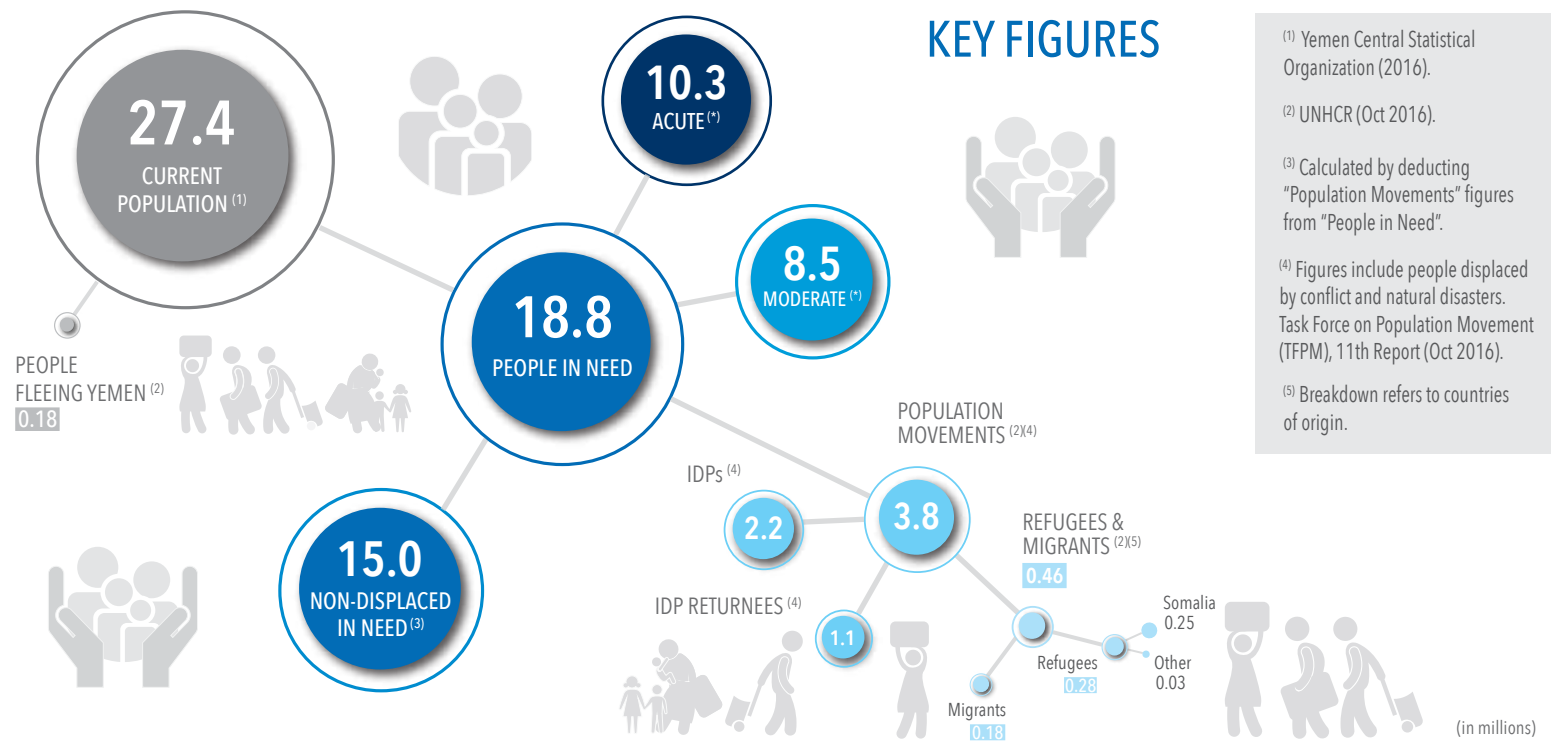


## HUMANITARIAN NEEDS AT A GLANCE

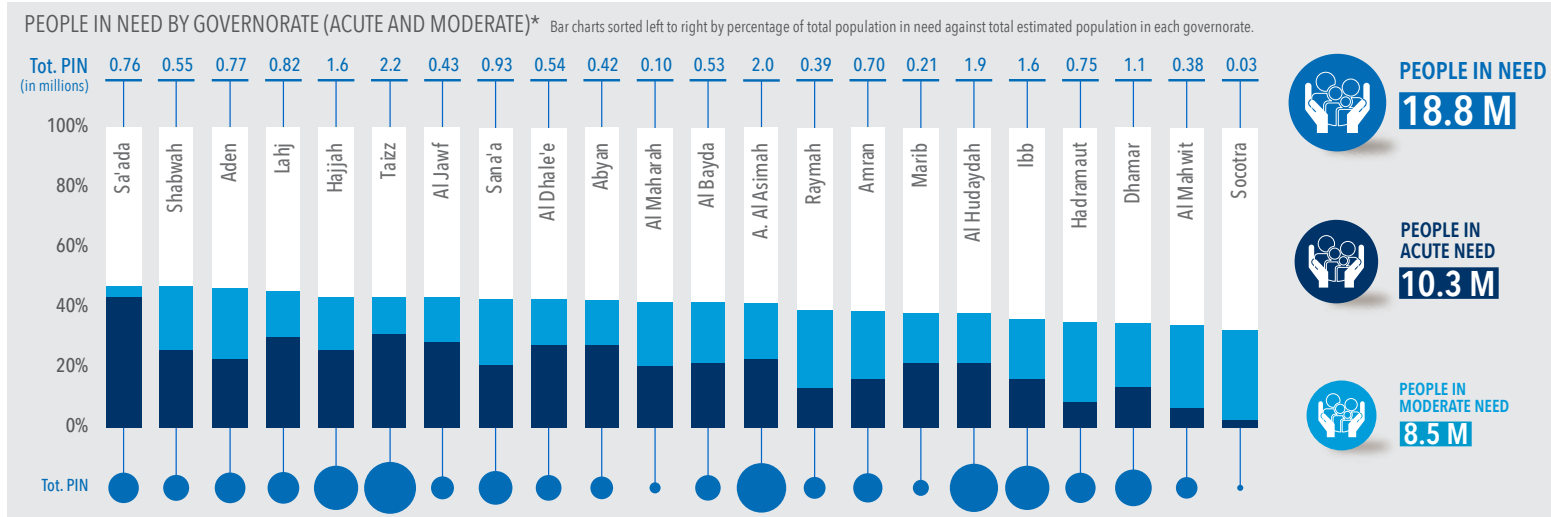
An estimated **18.8 million** people in Yemen need some kind of humanitarian or protection assistance, including **10.3 million** who are in acute need. Escalating conflict since March 2015 has created a vast protection crisis in which millions face risks to their safety and basic rights, and are struggling to survive. 2017 priority needs estimates are about 10 per cent lower than last year. This decrease reflects better data collection only, and can in no way be interpreted as an "improvement" in Yemen's catastrophic humanitarian situation.



2017 HNO website  
<http://ochayemen.org/hno-2017/>



<sup>(1)</sup> Yemen Central Statistical Organization (2016).  
<sup>(2)</sup> UNHCR (Oct 2016).  
<sup>(3)</sup> Calculated by deducting "Population Movements" figures from "People in Need".  
<sup>(4)</sup> Figures include people displaced by conflict and natural disasters. Task Force on Population Movement (TFPM), 11th Report (Oct 2016).  
<sup>(5)</sup> Breakdown refers to countries of origin.



\* Acute Need: People who require immediate assistance to save and sustain their lives. Moderate Need: People who require assistance to stabilize their situation and prevent them from slipping into acute need.

# HUMANITARIAN NEEDS AT A GLANCE

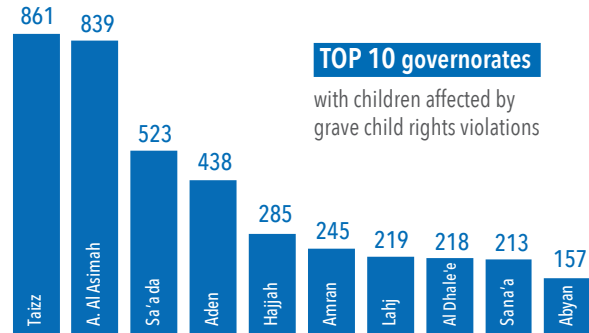
## 1 PROTECTION OF CIVILIANS

## 2 BASIC SURVIVAL

## 3 ESSENTIAL SERVICES & INFRASTRUCTURE

## 4 LIVELIHOODS & PRIVATE SECTOR COLLAPSE

### CHILDREN AFFECTED BY GRAVE CHILD RIGHTS VIOLATIONS JAN 2015 - SEP 2016



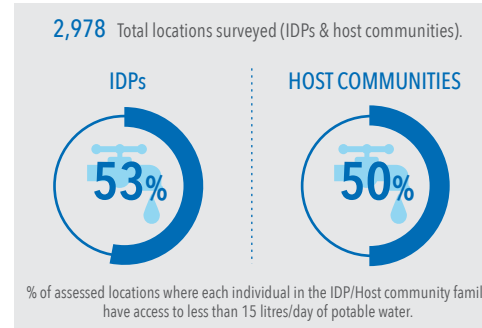
#### TOP 10 governorates

with children affected by grave child rights violations



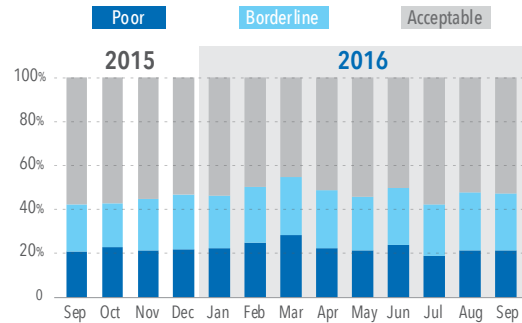
Source: Monitoring and Reporting Mechanism - MRM (Jan 2015 - Sep 2016).

### ACCESS TO WATER



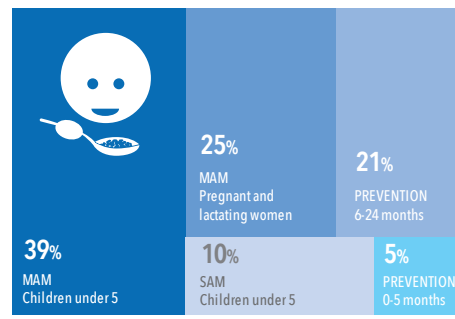
Source: Task Force on Population Movement, Location Assessments (Sep 2016).

### HOUSEHOLD FOOD CONSUMPTION LEVELS



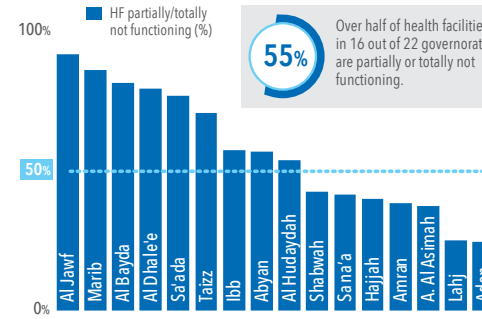
Source: WFP (Sep 2016).

### PEOPLE IN NEED BY NUTRITION STATUS



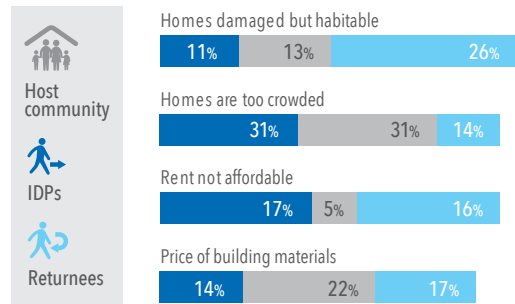
Source: Nutrition Cluster (Oct 2016).

### STATUS OF HEALTH FACILITIES



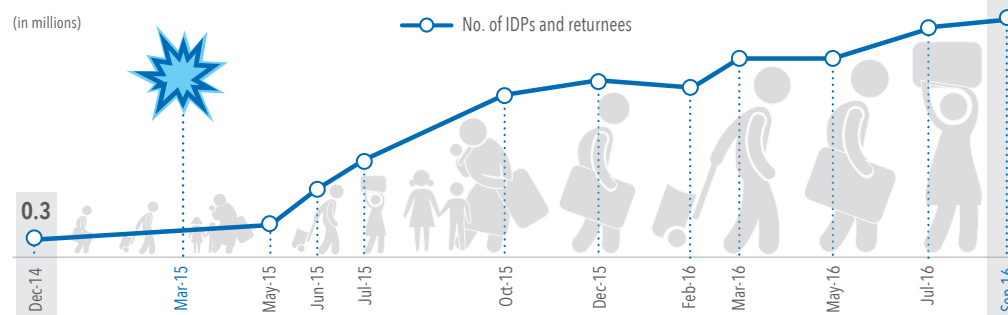
Source: WHO, Ministry of Health, Final Report (Oct 2016).

### TOP 4 SHELTER ISSUES



Source: Task Force on Population Movement, Location Assessments (Sep 2016).

### DISPLACEMENT LEVELS (2014 - 2016)



Source: Task Force on Population Movement (IOM/UNHCR). Figures include people displaced by conflict and natural disasters.

**TOT. PPL IN NEED**: 18.8 M

**PPL IN ACUTE NEED**: 10.3 M

- HEALTH**: 14.8 (Total), 8.8 (Acute)
- WASH**: 14.5 (Total), 8.2 (Acute)
- FOOD SECURITY & AGRICULTURE**: 14.1 (Total), 7.0 (Acute)
- PROTECTION**: 11.3 (Total), 2.9 (Acute)
- NUTRITION**: 4.5 (Total), 4.0 (Acute)
- SHELTER, NFI, CCCM**: 4.5 (Total), 3.9 (Acute)
- EDUCATION**: 2.3 (Total), 1.1 (Acute)
- REFUGEES & MIGRANTS**: 0.46 (Total), 0.03 (Acute)

Source: Clusters. (in millions)