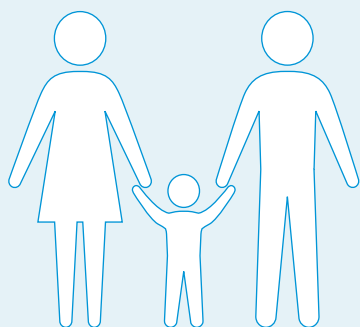


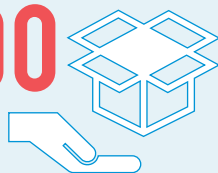
1.5 MILLION

affected population in Regions IV-A, IV-B, V and VIII



316,700

displaced population being served by the Department of Social Welfare and Development (DSWD) at



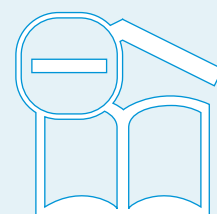
657

evacuation centres

of which 99% of the displaced population are from REGION V

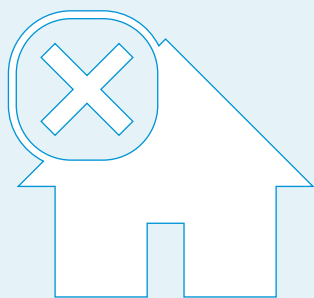
386

totally damaged classrooms



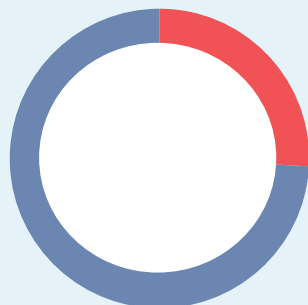
968

partially damaged classrooms



124,100

damaged houses



31,000

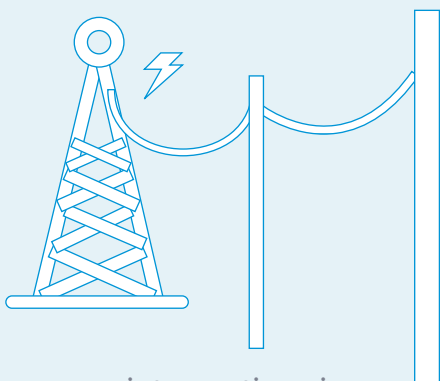
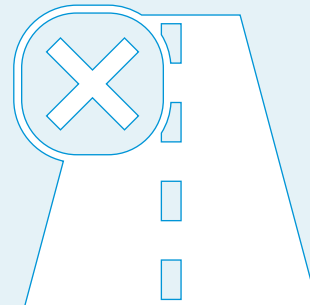
totally damaged houses

93,100

partially damaged houses

USD 13.6 MILLION

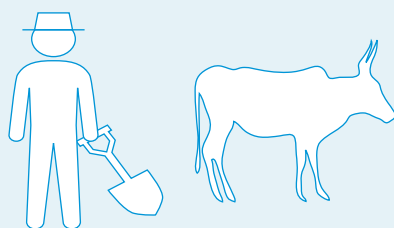
estimate cost of infrastructure damage



power interruptions in

106

cities/municipalities



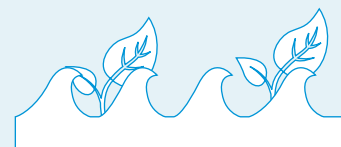
86,000

hectares

damaged agricultural land

85,000

affected farmers



360

metric tons of rice, corn and high value crops totalling to USD 82 MILLION were recorded as production losses