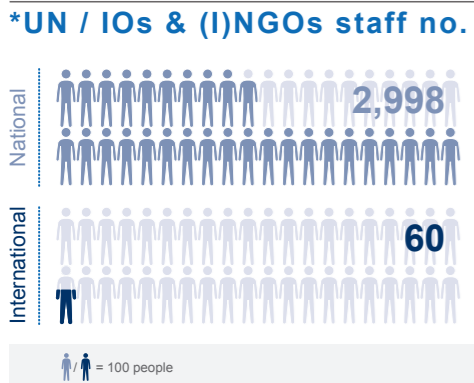
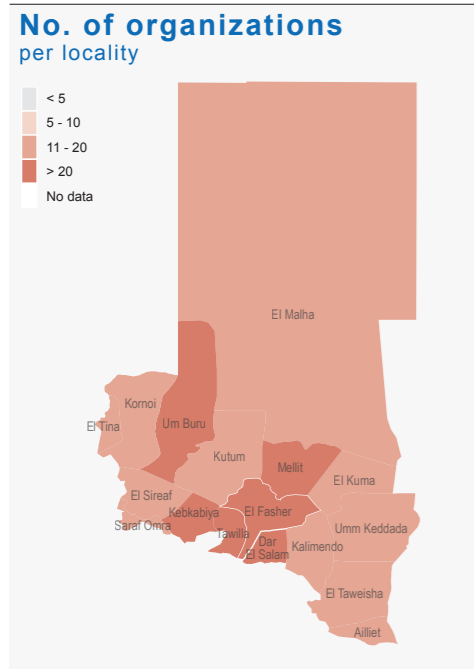
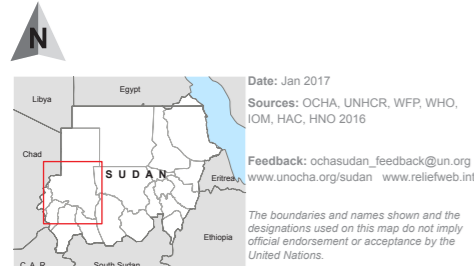


66 Total number of organizations
 13(UN/IOs)
 14(INGOs)
 39(NNGOs)



- Sectors**
- Education
 - Emergency Shelter & Non-Food Items
 - Food Security & Livelihoods
 - Health
 - Nutrition
 - Protection
 - Recovery, Return & Reintegration
 - Refugee Multi-Sector
 - Water, Sanitation & Hygiene
 - Others

UN United Nations
 IOs International Organization
 (I)NGO International & National Governmental Organization

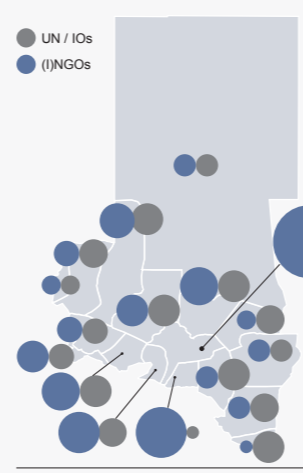


Organizations per locality / per sector

No. of organizations per sector: < 5 (lightest), 5-10, 11-20, > 20 (darkest), No data

Localities	Sectors	Total
AILLIET	CDO, SAG, UNHCR-ES/NFI, COOPI, FAO, CDO, UNFPA, UNICEF, WHO, CDO, UNICEF, WFP, CPNW, UNHCR, UNICEF, IOM, UNDP, UNHCR, COOPI, UNICEF, OCHA	14
DAR EL SALAM	NOBEL, Plan Sudan, RDN, UNICEF, WFP, ZOA, ZULFA, DDA, Oxfam A., UNHCR-ES/NFI, AHA, DDA, FAO, UPO, WFP, ZOA, Anhar, UNFPA, UNICEF, WHO, DDA, PHF, WFP, AHA, CPNW, FPDO, RDN, SCS, UNHCR, UNICEF, PA, Plan Sudan, UNDP, VNRHD, DDA, UNICEF, IOM, OCHA, Plan Sudan	26
EL FASHER	FRDN, SAG, UNICEF, WFP, OXFAM-E, Plan Sudan, SAG, SRCS, UNHCR-ES/NFI, AHA, DDRA, FAO, FRDN, GAA/WHH, PA, SAKAR, UNOPS, WDA, WFP, BVO, HAD, PHF, RI, Um Elrahma, UNFPA, UNICEF, WHO, ZULFA, FRDN, PHF, RDN, RI, UNICEF, WFP, ZULFA, CPNW, FPDO, Plan Sudan, RDN, SCS, SPHO, UNFPA, UNHCR, UNICEF, WHO, SC-S, UNDP, UNHCR, RI, PA, Plan Sudan, RI, UNICEF, UNOPS, ZULFA, OCHA, Red R, UNDS/INGO Liason, UNOPS, UNRCSO	35
EL KUMA	UNICEF, WFP, SAG, UNHCR-ES/NFI, Argoon, DDRA, FAO, PA, WFP, UNFPA, UNICEF, WHO, Argoon, UNICEF, WFP, CPNW, UNHCR, UNICEF, IOM, FPDO, OCHA	15
EL MALHA	AOPD, UNICEF, WFP, SAG, UNHCR-ES/NFI, GAA/WHH, WFP, RI, WHO, RI, SCS, SWDO, UNICEF, WFP, CPNW, UNHCR, UNICEF, IOM, OCHA	14
EL SIREAF	AOPD, UNICEF, FAO, KSCS, WFP, ANHAR, MSF-E, UNFPA, UNICEF, WHO, AI Massar, ANHAR, MSF-E, UNICEF, WFP, AOPD, CPNW, UNHCR, UNICEF, IOM, KSCS, OXFAM-A, Sahel, UNICEF, OCHA	16
EL TAWEISHA	WFP, SAG, UNHCR-ES/NFI, AHA, COOPI, DDRA, FAO, Morah, CDO, UNFPA, UNICEF, WHO, CDO, UNICEF, WFP, CPNW, UNHCR, UNICEF, IOM, IOM, OCHA	16
KALIMENDO	NOBEL, SCS, WFP, ZOA, Oxfam-E, UNHCR-ES/NFI, FAO, Oxfam-A, WFP, BALSAM, RI, SCS, UNFPA, UNICEF, WHO, BALSAM, UNICEF, WFP, SCS, UNHCR, UNICEF, UNDP, COOPI, Oxfam-A, ZOA, IOM	16

UN / IOs & (I)NGOs presence per locality



- Map legend**
- State capital
 - Primary/paved road
 - IDPs in camp
 - IDPs in gathering site
 - IDPs in host community
 - IDPs in camp/gathering + host community
 - UNHAS landing site
 - UNAMID landing site

Localities	Sectors	Total
KEBKABIYA	AI Massar, AOPD, KSCS, WFP, KSCS, Oxfam-A, UNHCR-ES/NFI, DRA, FAO, KSCS, SRCS, WFP, AI Massar, ANHAR, MSF E, UNFPA, UNICEF, WHO, AI Massar, ANHAR, KSCS, MSF-E, UNICEF, WFP, ASSIST, FPDO, KSCS, NADA, UNHCR, UNICEF, IOM, PA, UNDP, KSCS, Oxfam-A, UNICEF, OCHA	22
KORNOL, EL TINA	GOAL, NHOS, SAG, UNHCR-ES/NFI, COOPI, FAO, GAA/WHH, NHOS, UNFPA, UNICEF, WHO, MSF-E, TEC, AHA, UNHCR, UNICEF, COOPI, IOM, UNDP, UNICEF, OCHA, Kornol	17
KUTUM	AI Massar, FPDO, SAG, WFP, SAG, UNHCR-ES/NFI, DDRA, FAO, GAA/WHH, KAEDS, WFP, Ayadi Elrahma, GOAL, UNFPA, UNICEF, WHO, GOAL, KAEDS, UNICEF, WFP, CPNW, FPDO, NADA, UNHCR, UNICEF, IOM, GOAL, UNICEF, IOM, OCHA	19
MELLIT	JRS, UNICEF, WFP, SAG, UNHCR-ES/NFI, COOPI, CRLRS, DDRA, FAO, GAA/WHH, WFP, ANHAR, IOM, RI, UNFPA, UNICEF, WHO, CSDV, UNICEF, WFP, CPNW, FPDO, UNHCR, UNICEF, IOM, UNDP, COOPI, FPDO, IOM, SRCS, UNICEF, IOM, OCHA	22

Level of needs per locality



Localities	Sectors	Total
SARAF OMRA	AOPD, WFP, SRCS, UNHCR-ES/NFI, DDRA, FAO, KSCS, SAKAR, WFP, ZULFA, AI Massar, UNFPA, UNICEF, WHO, ANHAR, AOPD, CPNW, UNHCR, UNICEF, IOM, KSCS, OXFAM-A	18
TAWILLA	Plan Sudan, RDN, SAG, SPHO, WFP, El Ruhama, SAG, SRCS, UNHCR-ES/NFI, DDRA, FAO, SAKER, SRCS, WFP, MSF-E, RI, SAKER, UNFPA, UNICEF, WHO, MSF-E, UNICEF, WFP, CPNW, FPDO, SAKAR, UNHCR, UNICEF, IOM, IOM, MSF-E, NPO, Plan Sudan, IOM, OCHA	22
UM BURU	FPDO, NOHS, WFP, NOHS, SAG, UNHCR-ES/NFI, COOPI, FAO, GAA/WHH, WFP, ANHAR, MSF-E, UNFPA, UNICEF, WHO, MSF-E, AHA, ASSIST, CPNW, UNHCR, UNICEF, UPO, ASSIST, COOPI, FPDO, IOM, NOHS, SAG, UNDP, UPO, COOPI, UNICEF, IOM, OCHA	21
UMM KEDDADA	CDO, WFP, SAG, UNHCR-ES/NFI, AHA, COOPI, DDRA, FAO, UKRDP, WFP, CDO, RI, UNFPA, UNICEF, WHO, CDO, UKRDP, UNICEF, WFP, IOM	14