

LAKE CHAD BASIN CRISIS

OCHA MANAGED POOLED FUNDS As of 21 February 2017



Over 20 million people across the Lake Chad Basin are in need of humanitarian assistance. Since 2014, the **Central Emergency Response Fund (CERF)** has allocated \$144 million for urgent aid to people affected by conflict and deepening food crisis. More than one third of the allocations supported humanitarian operations in Nigeria helping displaced people and vulnerable host communities. The **Nigeria Humanitarian Fund (NHF)** will further bolster the response by making funds directly available to a wide range of relief partners, including NGOs. CERF and NHF provide complementary funding towards activities prioritized at the local level under the leadership of the Humanitarian Coordinator.

POPULATION AFFECTED¹

Based on each country 2017 Humanitarian Response Plan (HRP) and people targeted by CERF in 2017 first round of underfunded emergencies.

NIGERIA



8.5 M
people
in need

6.9 M
people
targeted

2.3 M
people targeted
by CERF

CAMEROON



1.6 M
people
in need

767 K
people
targeted

308 K
people targeted
by CERF

CHAD



345 K
people
in need

233 K
people
targeted

No CERF
allocations

NIGER



340 K
people
in need

325 K
people
targeted

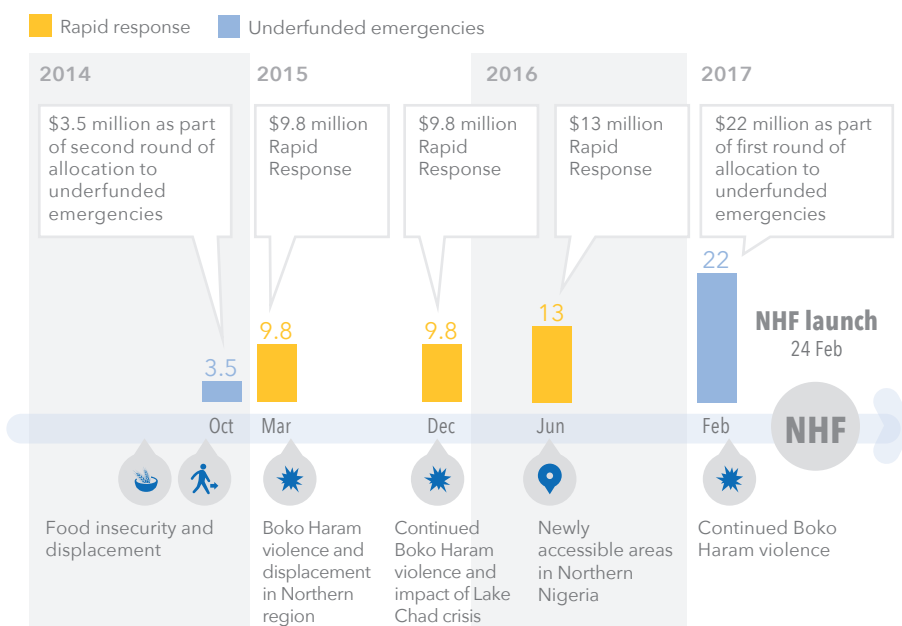
250 K
people targeted
by CERF

100,000
people targeted
by CERF

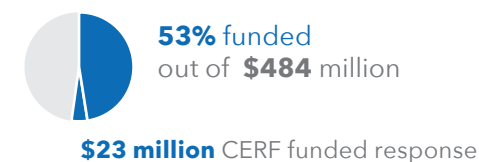
100,000
people
targeted

100,000
people
in need

CERF ALLOCATIONS TO NIGERIA TIMELINE in US\$ million



NIGERIA FUNDING GAP IN 2016²

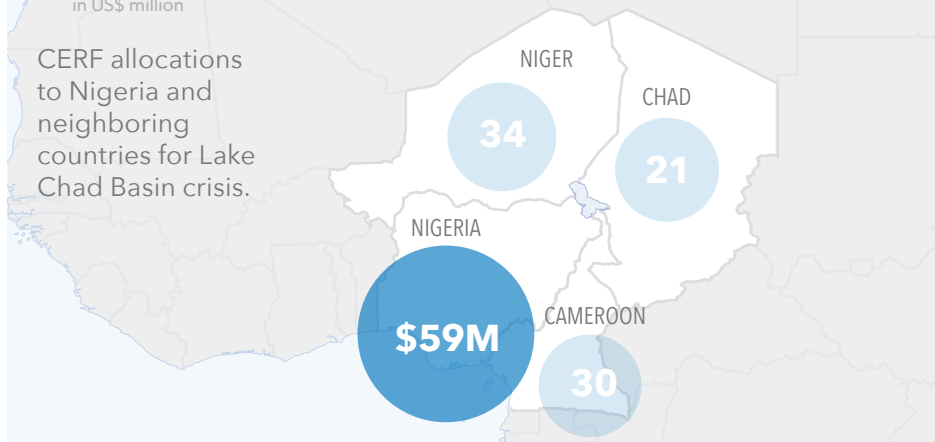


Working towards the Secretary General's target of 15 per cent of HRP funding channelled through CBPFs by 2018, in its first year of operations the NHF aims to attract between \$50 million and \$80 million in support of critical components of the 2017 Nigeria HRP.

CERF ALLOCATIONS BY COUNTRY

in US\$ million

CERF allocations to Nigeria and neighboring countries for Lake Chad Basin crisis.



The boundaries and names shown and the designations used on this map do not imply official endorsement or acceptance by the United Nations.

Creation: 21 February 2017 Source: CERF (18 February 2017), ¹2017 Humanitarian Response Plan, ³OCHA Financial Tracking System as of 22 Feb 2017

Feedback: hargarten@un.org demul@un.org | cerf@un.org | cbpf website | cerf.un.org | www.unocha.org