

From 28 April to 4 May more than 1,600 Malian refugees from Niger returned spontaneously to the district of Menaka, in the Gao region.

These returns have been organized and coordinated by the refugees themselves.

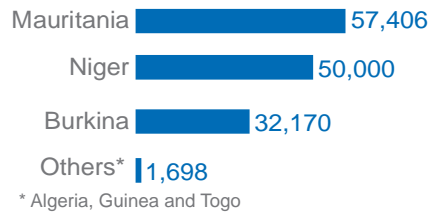
Population movement



278,370

DISPLACED PEOPLE

Refugees¹ **141,274**

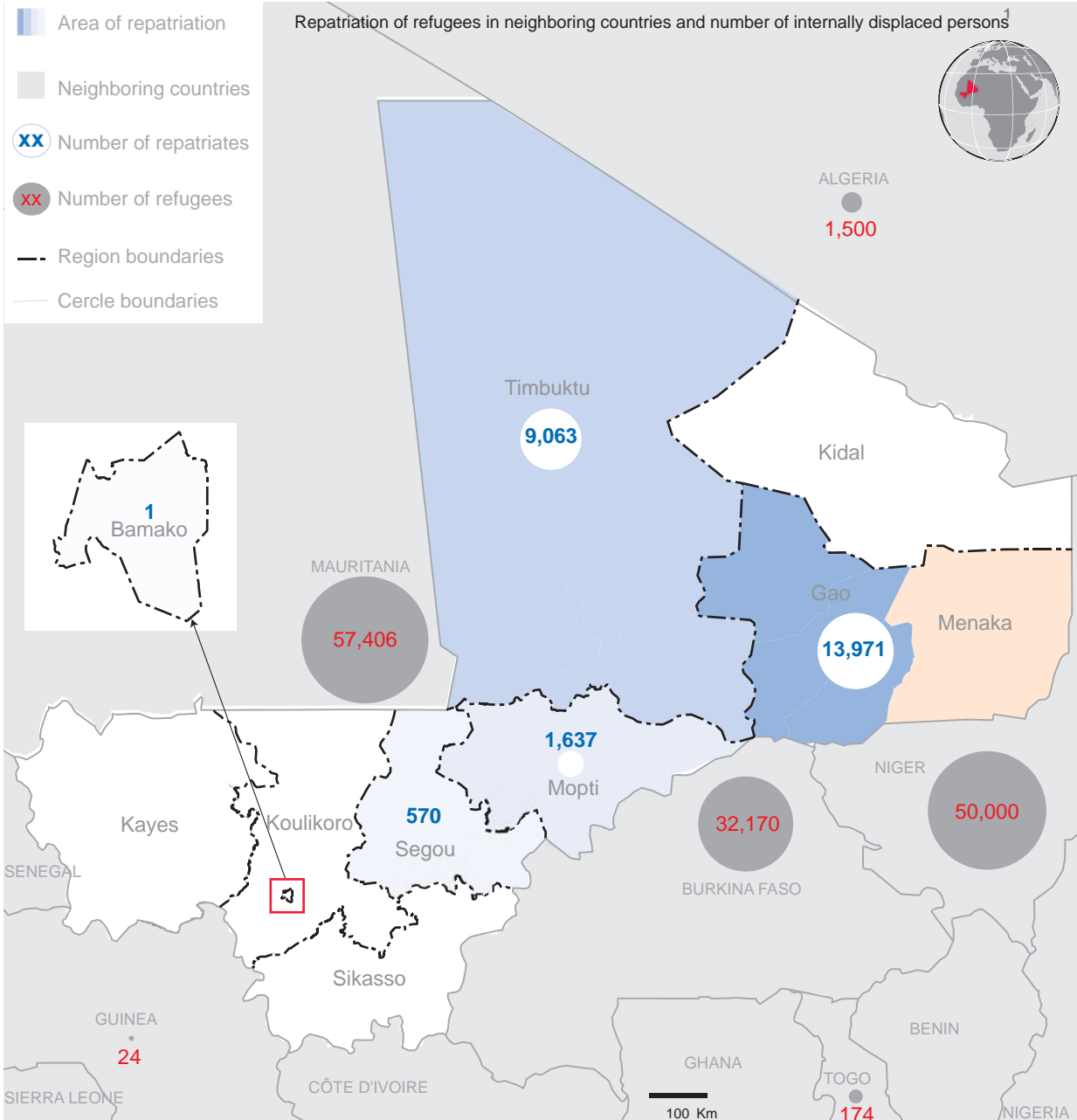
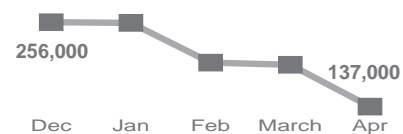


25,420

Repatriates in Segou, Mopti, Timbuktu, Gao and Bamako district.

Internally displaced person (IDPs)²

137,096

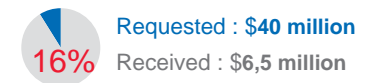


Agricultural campaign

Food security cluster and FAO estimate that around **3 million** people need assistance for this year's agricultural campaign.

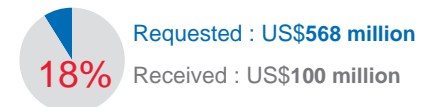
The Strategic Response Plan seeks **US\$ 40 million** to support **600,000** people in rain-fed agriculture and **100 000** people in cattle farming.

Funding of the agricultural campaign



The low level of funding of the agricultural campaign is likely to have consequences on the agricultural production of the most vulnerable households. Preventive actions are needed to prevent a deterioration of the level of food insecurity.

Funding of the SRP³



The boundaries and names shown and the designations used on this map do not imply official endorsement or acceptance by the United Nations.

Creation date: 07 May 2014 Sources : ¹ UNHCR, <http://data.unhcr.org/SahelSituation/regional.php> ² International Organization for Migration, IOM ³ SRP : Strategic Response Plan, www.reliefweb.int | fts.unocha.org

Comment : ochamali@un.org | <http://mali.humanitarianresponse.info> | www.unocha.org/mali | www.reliefweb.int | fts.unocha.org