

# **Liberia Ebola SitRep no. 105**

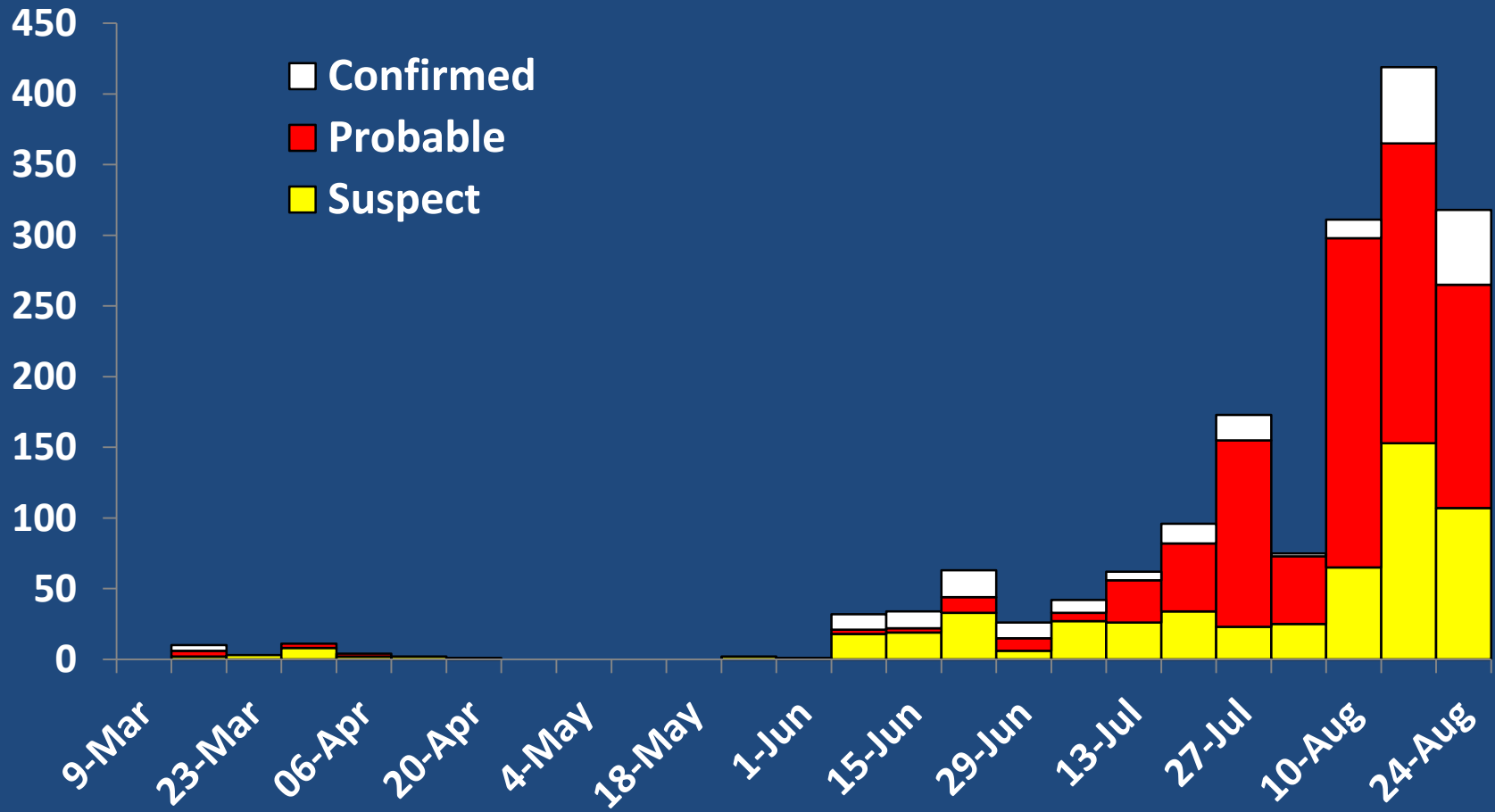
**Ministry of Health and Social Welfare**

**Aug 28, 2014**

# Cases

	National	Bomi County	Bong County	Gbarpolu County	Grand Bassa	Grand Cape Mount	Grand Gedeh	Lofa County	Margibi County	Montserrado County	Nimba County	River Gee County	RiverCess County	Sinoe County
New Case/s (Suspected)	14	0	1	0	0	0	0	0	1	11	1	0	0	0
New Case/s (Probable)	25	0	1	0	0	0	0	9	2	13	0	0	0	0
New case/s (confirmed)	22	0	0	0	0	0	0	21	0	0	1	0	0	0
Total suspected cases	460	1	78	1	18	1	3	63	99	174	16	5	0	1
Total probable cases	753	30	34	0	11	4	0	307	60	249	58	0	0	0
Total confirmed cases	369	21	20	0	11	4	0	210	27	44	30	0	1	1
Total Number of Confirmed Cases of Sierra Leonean Nationality	13	0	0	0	0	2	0	11	0	0	0	0	0	0
Total Number of Confirmed Cases of Guinean Nationality	1	0	0	0	0	0	0	0	0	1	0	0	0	0
Cumulative (confirmed, probable, suspected) cases	1582	52	132	1	40	9	3	580	186	467	104	5	1	2

# Outbreak Overview: Case Counts Reported



# Cases among HCWs

	National	Bomi County	Bong County	Gbarpolu County	Grand Bassa	Grand Cape Mount	Grand Gedeh	Lofa County	Margibi County	Montserrado County	Nimba County	River Gee County	RiverCess County	Sinoe County
Newly Reported Cases in HCW on 28th Aug 2014	3	0	0	0	0	0	0	0	0	3	0	0	0	0
Cumulative cases among HCW	140	5	26	0	3	3	0	20	30	51	2	0	0	0
Newly Reported deaths in HCW on 28th Aug 2014	2	0	0	0	0	0	0	0	0	2	0	0	0	0
Cumulative deaths among HCW	73	4	5	0	1	0	0	17	18	28	0	0	0	0

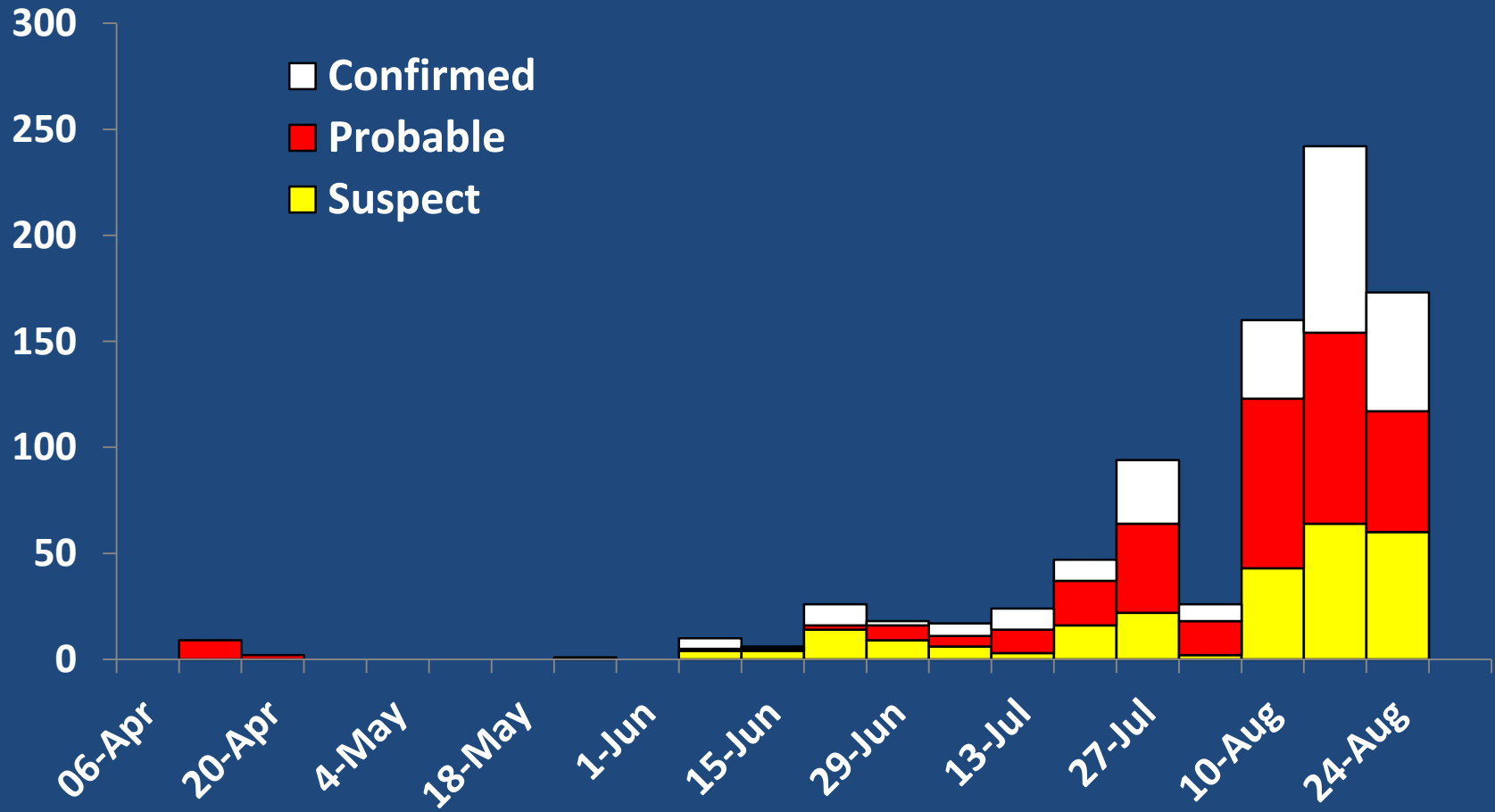
# Isolation and Discharges

	National	Bomi County	Bong County	Gbarpolu County	Grand Bassa	Grand Cape Mount	Grand Gedeh	Lofa County	Margibi County	Montserrado County	Nimba County	River Gee County	RiverCess County	Sinoe County
New Admission on Aug 28 2014	28	0	0	0	0	0	0	9	0	19	0	0	0	0
Total no. currently in Treatment Units	264	0	0	0	0	0	0	69	0	195	0	0	0	0
Total discharges on 28th Aug 2014	31	0	0	0	0	0	0	8	0	23	0	0	0	0
Cumulative admission/isolation	264	0	0	0	0	0	0	69	0	195	0	0	0	0

# Deaths

	National	Bomi County	Bong County	Gbarpolu County	Grand Bassa	Grand Cape Mount	Grand Gedeh	Lofa County	Margibi County	Montserrado County	Nimba County	River Gee County	RiverCess County	Sinoe County
Newly reported deaths 28th Aug 2014	51	1	0	0	0	0	0	9	4	35	2	0	0	0
Total death/s in confirmed cases	321	19	11	0	6	4	0	131	23	104	23	0	0	0
Total death/s in probable cases	350	14	13	0	3	1	0	128	40	121	29	0	1	0
Total death/s in suspected cases	214	0	17	0	3	2	2	34	34	110	7	5	0	0
Total death/s in confirmed, probable, suspected cases	885	33	41	0	12	7	2	293	97	335	59	5	1	0
Case Fatality Rate (CFR) - Confirmed & Probable Cases	<b>59.8</b>	<b>64.7</b>	<b>44.4</b>	<b>0.0</b>	<b>40.9</b>	<b>62.5</b>	<b>0.0</b>	<b>50.1</b>	<b>72.4</b>	<b>76.8</b>	<b>59.1</b>	<b>0.0</b>	<b>100.0</b>	<b>0.0</b>

# Outbreak Overview: Deaths Reported



# Contacts

	<b>National</b>	<b>Bomi County</b>	<b>Bong County</b>	<b>Gbarpolu County</b>	<b>Grand Bassa</b>	<b>Grand Cape Mount</b>	<b>Grand Gedeh</b>	<b>Lofa County</b>	<b>Margibi County</b>	<b>Montserrado County</b>	<b>Nimba County</b>	<b>River Gee County</b>	<b>RiverCess County</b>	<b>Sinoe County</b>
Newly reported contacts on 28th Aug 2014	165	11	11	0	0	0	0	0	0	128	15	0	0	0
Total contacts listed	4779	91	456	0	33	30	0	717	685	2476	285	0	6	0
Currently under follow-up	2790	46	274	0	33	25	0	367	594	1346	101	0	4	0
Contacts seen on 28th Aug 2014	2732	46	274	0	33	25	0	367	594	1292	101	0	0	0
Contacts who completed 21 day follow-up	140	0	0	0	0	0	0	94	0	46	0	0	0	0
Contacts lost to follow-up	10	0	0	0	0	5	0	0	0	5	0	0	0	0



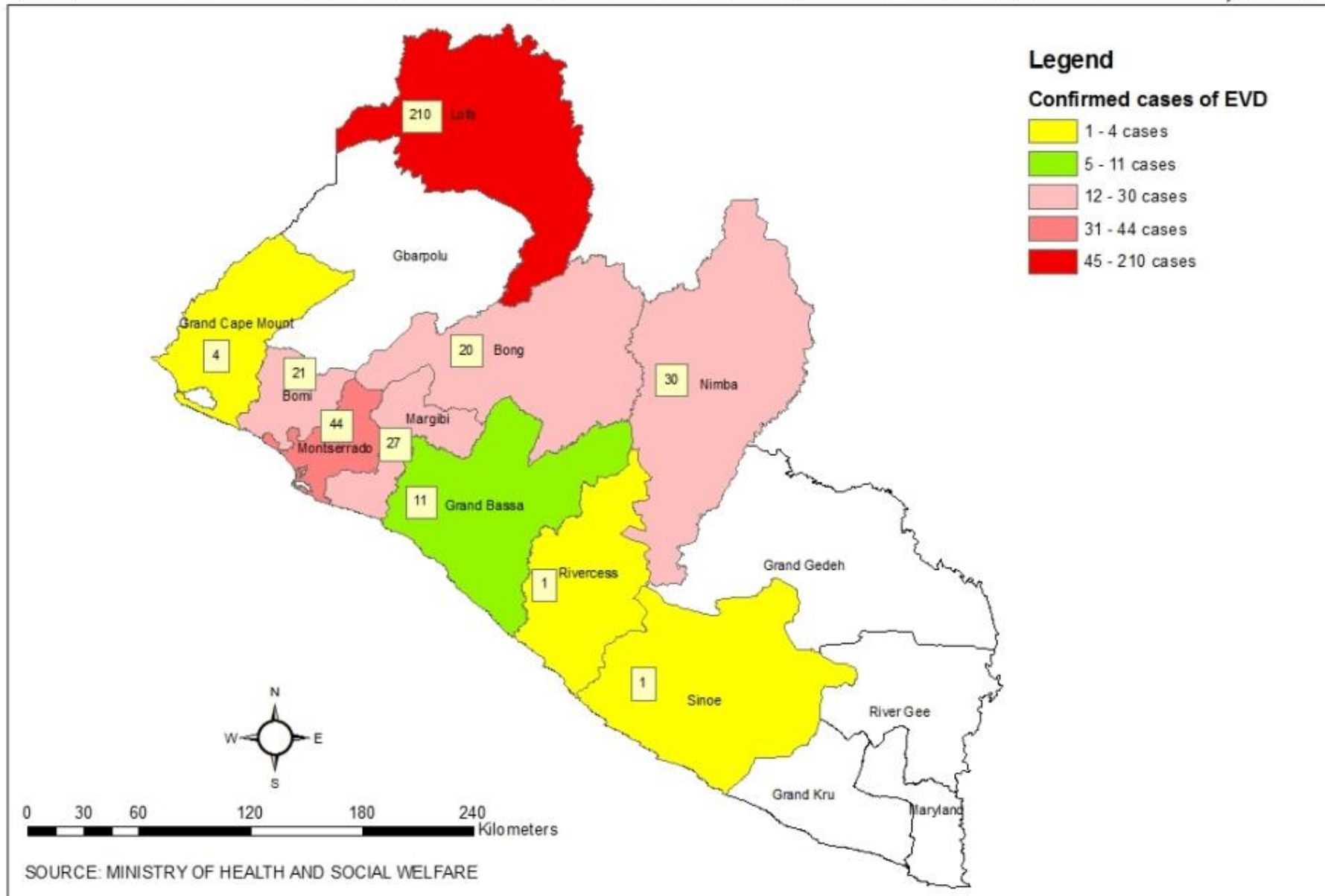
# Laboratory

	National	Bomi County	Bong County	Gbarpolu County	Grand Bassa	Grand Cape Mount	Grand Gedeh	Lofa County	Margibi County	Montserrado County	Nimba County	River Gee County	RiverCess County	Sinoe County
Specimens collected on 28th Aug 2014	25	2	2	0	0	0	0	19	0	0	2	0	0	0
Specimens pending for testing	41	2	2	0	1	0	0	19	0	0	17	0	0	0
Total specimens tested	21	0	0	0	0	0	0	21	0	0	0	0	0	0

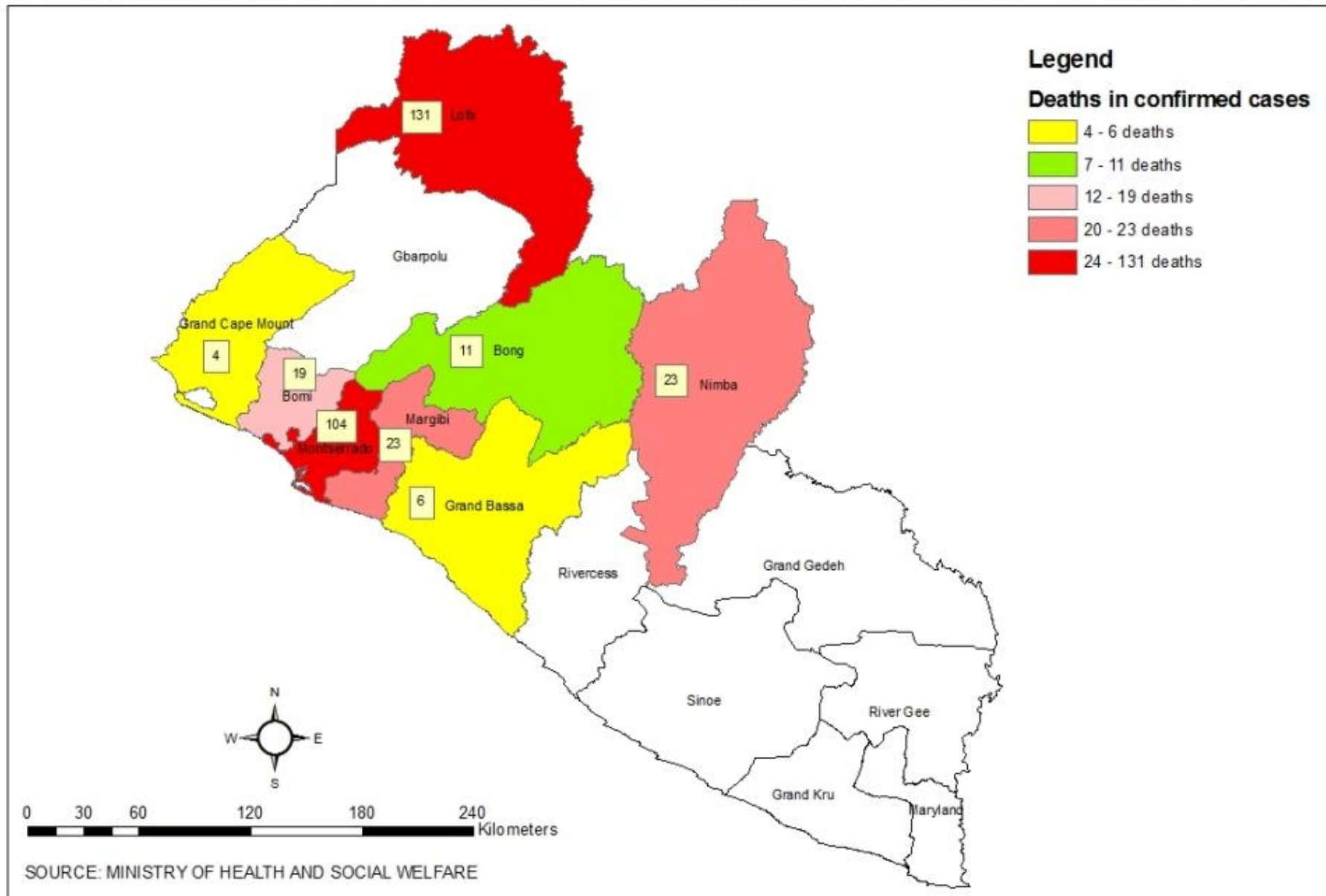
# Ebola Disease Outbreak (March 22-Aug 28, 2014)

Table 3: Cumulative Ebola Disease Outbreak in Liberia (March 22 -Aug 28, 2014)														
Cases														
	National	Bomi County	Bong County	Gbarpolu County	Grand Bassa	Grand Cape Mount	Grand Gedeh	Lofa County	Margibi County	Montserrado County	Nimba County	River Gee County	RiverCess County	Sinoe County
Total Case/s (Suspected)	460	1	78	1	18	1	3	63	99	174	16	5	0	1
Total Case/s (Probable)	755	30	34	0	11	4	0	309	60	249	58	0	0	0
Total case/s (confirmed)	375	21	20	0	11	4	0	214	29	44	30	0	1	1
Cumulative (confirmed, probable, suspected) cases	1590	52	132	1	40	9	3	586	188	467	104	5	1	2
Health Care Workers														
Cumulative cases among HCW	142	5	26	0	3	3	0	22	30	51	2	0	0	0
Cumulative deaths among HCW	75	4	5	0	1	0	0	19	18	28	0	0	0	0
Deaths														
Total death/s in confirmed cases	327	19	11	0	6	4	0	135	25	104	23	0	0	0
Total death/s in probable cases	352	14	13	0	3	1	0	130	40	121	29	0	1	0
Total death/s in suspected cases	217	0	17	0	3	2	2	35	35	111	7	5	0	0
Total death/s in confirmed, probable, suspected cases	896	33	41	0	12	7	2	300	100	336	59	5	1	0
Cumulative CFR (March 22 - Aug 28, 2014)	60.1	64.7	44.4	#####	40.9	62.5	#### #	50.7	73.0	76.8	59.1	#### #	100.0	0.0

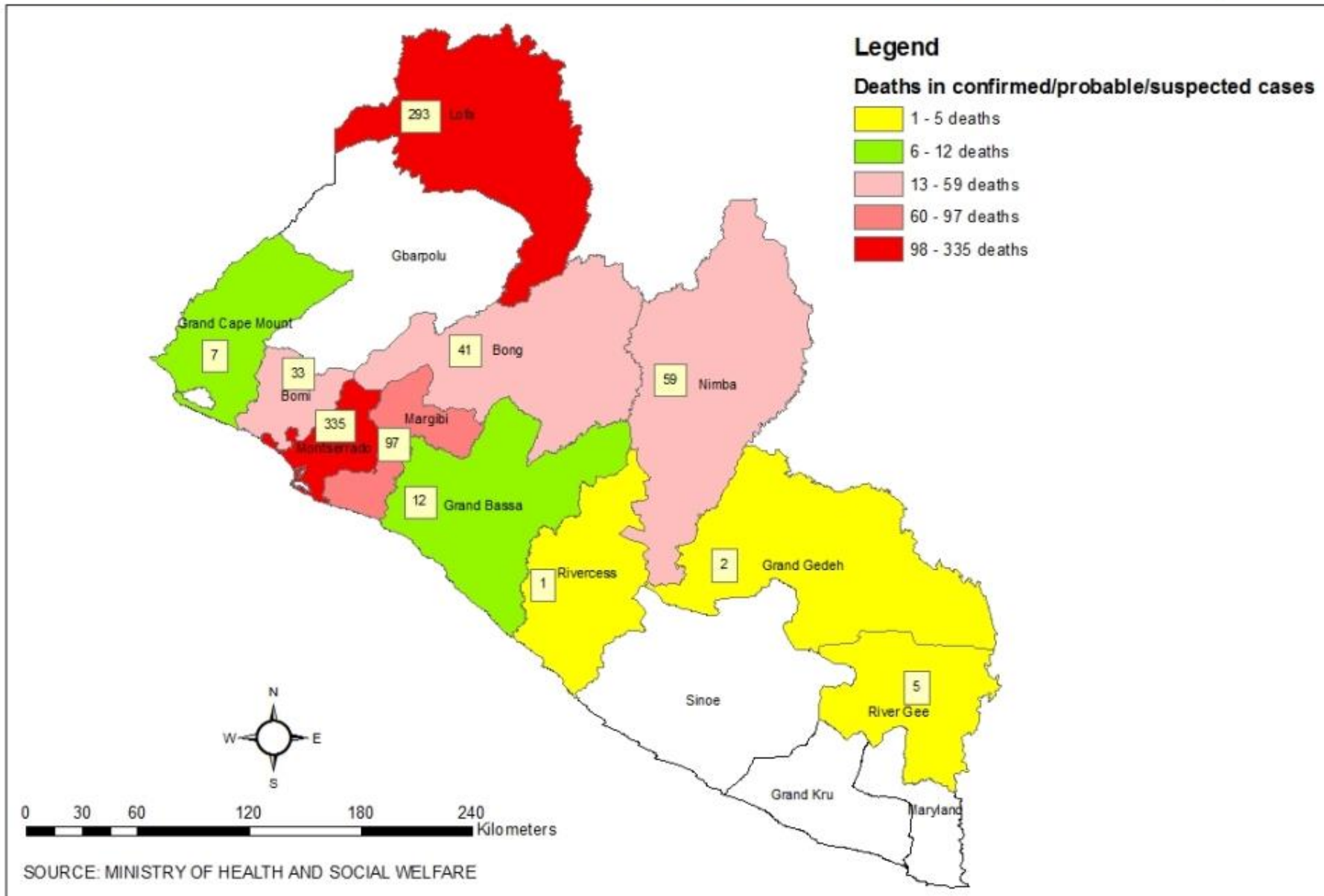
# CONFIRMED CASES OF EBOLA VIRUS DISEASE SINCE MAY 29th TO AUGUST 28th, 2014



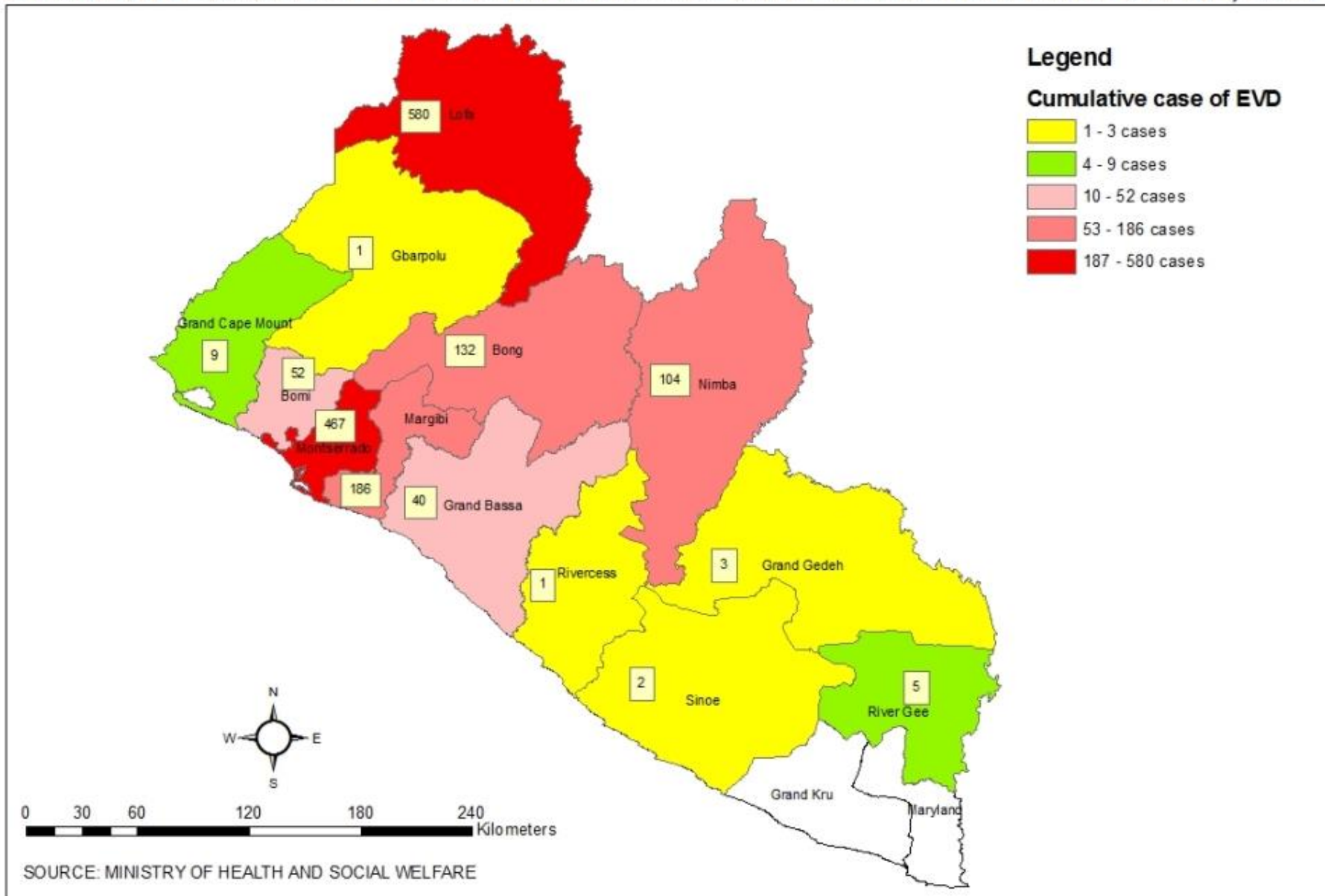
# DEATHS IN CONFIRMED CASES OF EBOLA VIRUS DISEASE SINCE MAY 29th TO AUGUST 28th, 2014



# DEATHS IN CONFIRMED/PROBABLE/SUSPECTED CASES OF EBOLA VIRUS DISEASE SINCE MAY 29th TO AUGUST 28th, 2014

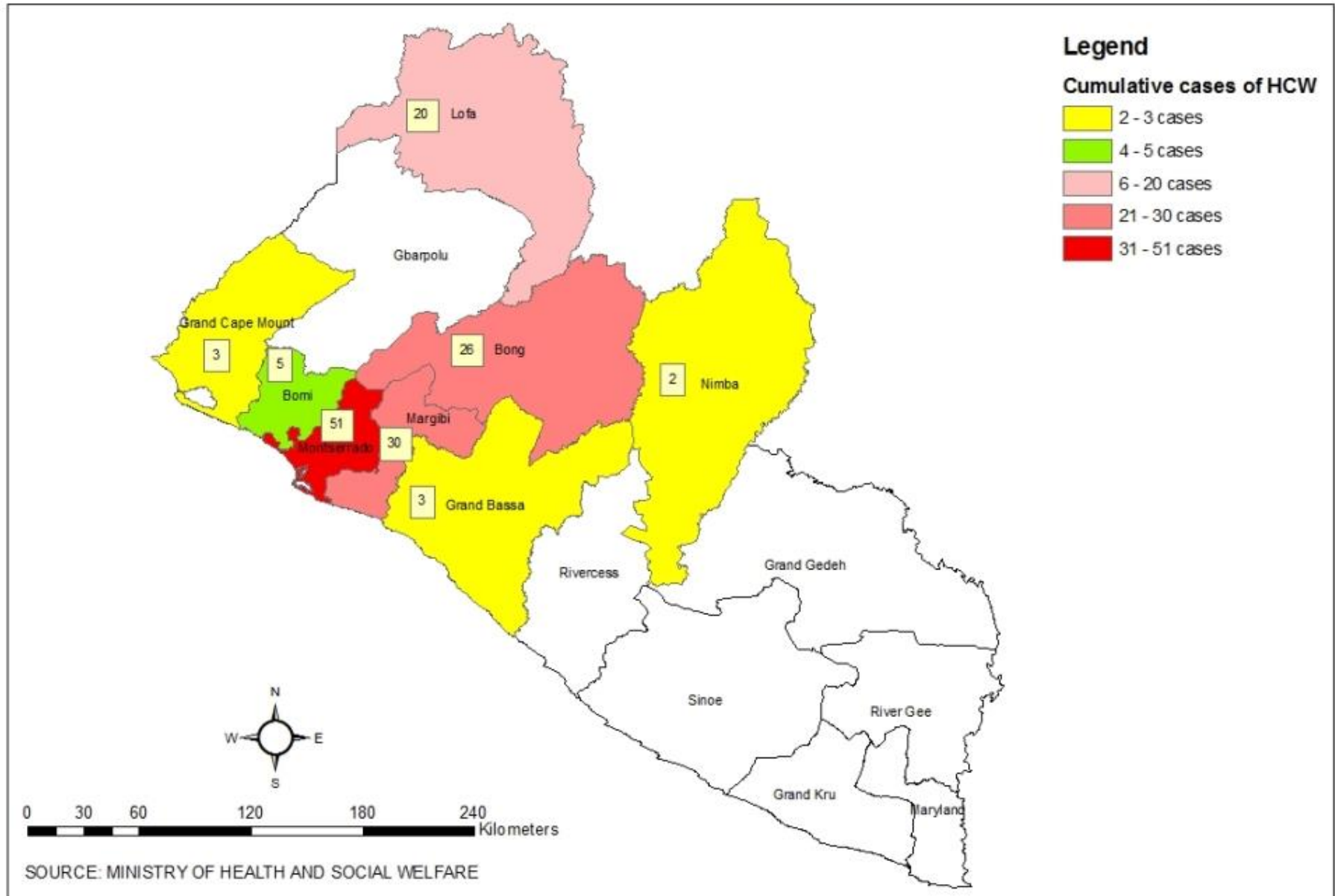


# CUMULATIVE CASES OF EBOLA VIRUS DISEASE SINCE MAY 29th TO AUGUST 28th, 2014

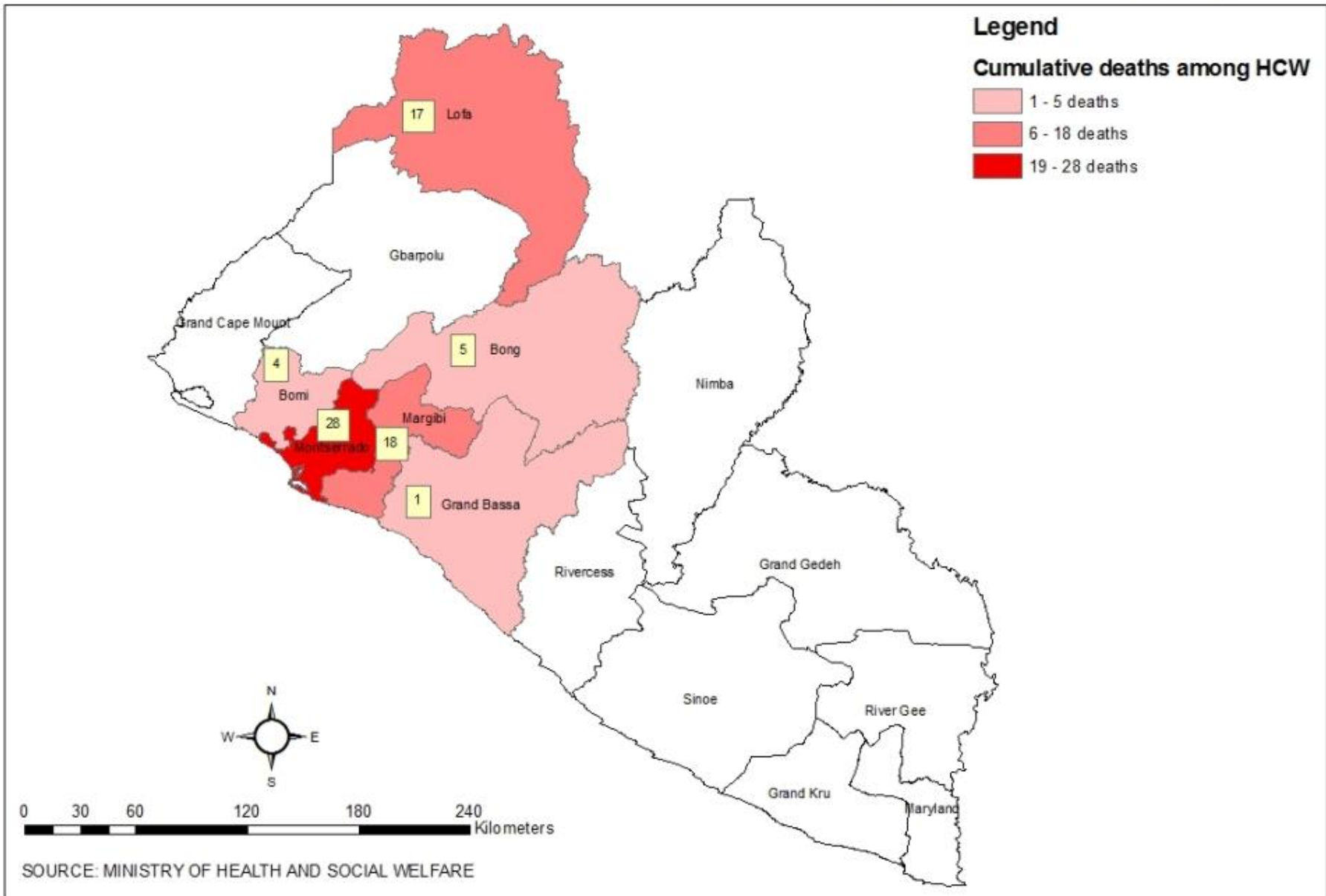




# CUMULATIVE CASES OF EBOLA VIRUS DISEASE AMONG HEALTH CARE WORKERS SINCE MAY 29th TO AUGUST 28th, 2014

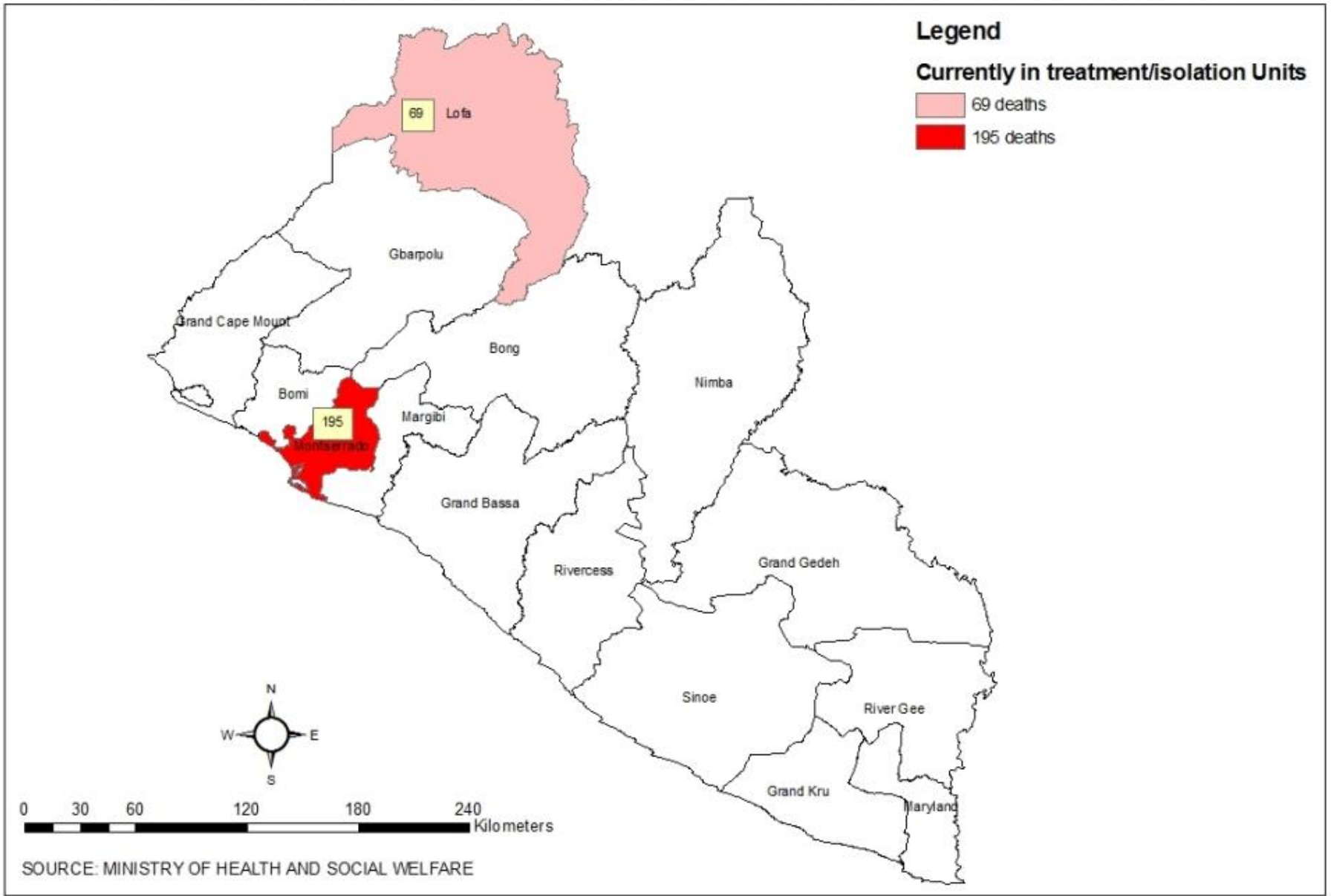


CUMULATIVE DEATHS OF EBOLA VIRUS DISEASE AMONG HEALTH CARE WORKERS SINCE MAY 29th TO AUGUST 28th, 2014





# CURRENTLY IN TREATMENT/ISOLATION UNITS SINCE MAY 29th TO AUGUST 28th, 2014





# Highlights

## Case Investigation

- There are discrepancies between transfers done by the Case Investigation Team (12 patients) to the MSF ETU and the number of patients reportedly received by the MSF ETU (27 patients).
- A patient from Capitol Hill was transferred to Redemption Hospital Holding Unit as there is no space at the ETUs in Monrovia

## Montserrado County

- 1292 (96%) of 1346 listed contacts were seen by the four tracing teams.

# Highlights

## JFK ETU

- Center has far exceeded its capacity and cannot admit any new patient for now
- Total admission as at this morning was 64 (32 males and 32 females)
- Total number of confirmed cases was 13 (from New Georgia and Gardnersville)
- Total number of new admission was 17
- No discharge
- Total number of children affected by Ebola currently at the center is 5 (to be taken to the Transit Home soon)
- 5 deaths reported within the last 24 hours
- There are about 10 patients at the Center who are ill but with negative lab results

## ELWA II

- Total admission as of the morning was 41
- Total number of confirmed cases was 18
- Total number of new admission was 2
- Total number of discharge was 6
- 1 death within the last 24 hours

# Highlights

## ELWA III

- Total admission as at this morning was 90
- Total number of confirmed cases was 80
- No new admission
- No discharge
- 16 deaths within the last 24 hours.

## Critical Issues

- There has been lack of water supply at the JKF ETU thus interrupting the timely delivery of critical services to patients admitted on the ward.
- It has been reported that some samples are sent for laboratory investigation without the proper labeling.

# Highlight

## **Nimba County**

- A 20 yrs female contact that escaped from contact tracers in Monrovia was found at Cestos River Bridge between Nimba and Grand Gedeh Counties and is currently being quarantined at JFDMH in Tappita.
- 7 AG YAMAHH Motorbikes were received from MOHSW for Ebola response
- The Psychosocial team, Case management and the County Task Force headed by the county superintendent distributed food items to 7 communities.

## **Bomi**

- A body (probable) was buried in Tubmanburg.
- Psycho-social activities and social mobilization/health promotion were conducted at district level.
- The national TA arrived in county to provide technical assistance to CHT relative to Ebola response.
- There five (5) patients presently in the holding center in Tubmanburg.

# Highlights

## Lofa County

- Nine (9) new probable cases reported (2-Kolahun District & 7-Foya)
- Total of 9 deaths:
  - 2-confirmed from FCMC
  - 7 Probable: 4-Kolahun District, 1-Foya District, 1-Vahun District, 1-Voinjama.
- 8 Discharges including 2 Survivors

## Lab Result:

- 27 lab results received
  - 21 **Positive**
  - 6 Negative
- 19 specimens were collected

# Highlight

## Margibi

- The World Food program delivered food items to Dolo Town Community.
- Training of (112) health workers was conducted by the National case management team for the reopening of Health Facilities in the County.
- The Director of the Center for Disease control (CDC) visited Margibi County
- One death is reported from the holding center

## National Reference Lab at LIBR

- 49 Test conducted
  - 26 Positive
  - 2 Indeterminate
  - 21 Negative