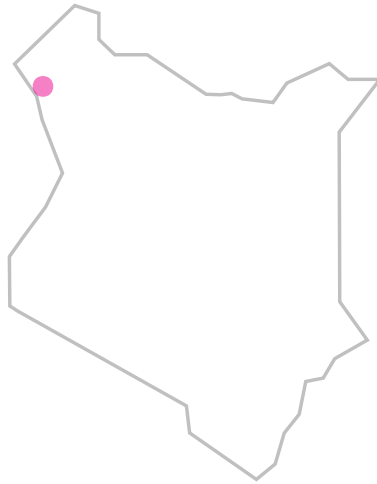
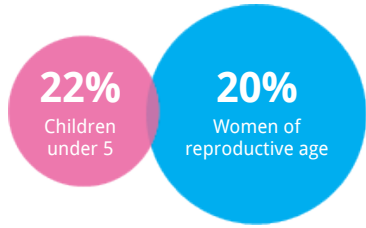


# Site report 2017 Kalobeyei KENYA



## Population

**38,196** refugees



## Origin of refugees

**SOUTH SUDAN** **BURUNDI**  
**DEMOCRATIC REPUBLIC OF THE CONG**

Site opened  
**Jul 2016**

## Partners



## Key Indicators

### CRUDE MORTALITY RATE

**0.2** Deaths/1,000 refugees/month

### U5 MORTALITY RATE

**0.3** Deaths/1,000 refugees/month

### MATERNAL MORTALITY

**0** Deaths

### SKILLED BIRTH ATTENDANCE

**97%** of all births

### GAM

**6%** Global Acute Malnutrition

### SAM

**1%** Severe Acute Malnutrition

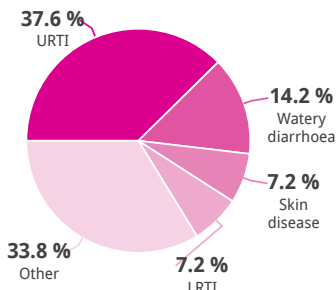
### WATER SUPPLY

**23** Liters/ person/ day

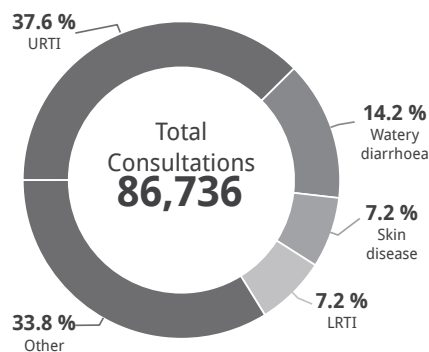
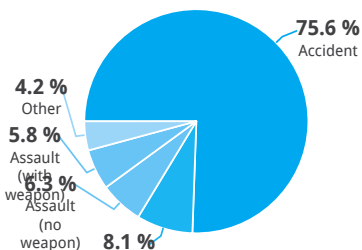
### LATRINE COVERAGE

**13** Refugees/communal toilets or latrines

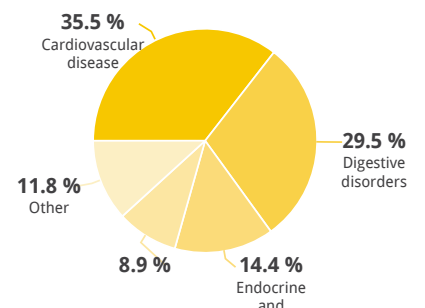
## COMMUNICABLE DISEASES



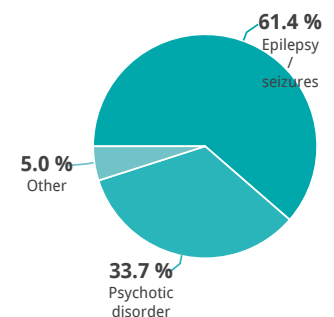
## INJURIES



## NON-COMMUNICABLE DISEASES



## MENTAL HEALTH



## Public Health

HEALTH STAFFING			MORBIDITY		
	INDICATOR	STANDARD		INDICATOR	STANDARD
Number of medical doctors	1	1 : < 50,000	⚠	8	
Number of qualified nurses	7	1 : < 10,000	✓	85	
Number of community health workers	50	1 : < 1,000	✓	31	
ACCESS AND UTILIZATION			VACCINATION		
	INDICATOR	STANDARD		INDICATOR	STANDARD
Consultations per trained clinician per day	108	< 50	✗	31%	< 95%
Health utilisation rate (new visits / refugee / year)	2.0	1 - 4	✓	Not collected	
Proportion of host population consultations	4%		✓	survey	
MORTALITY			IN-PATIENT DEPARTMENT (IPD)		
	INDICATOR	STANDARD		INDICATOR	STANDARD
Crude Mortality Rate (CMR) (/1000/month)	0.2	< 0.75	✓	Average length of stay (days)	
Under-five Mortality Rate (U5MR) (/1000/month)	0.3	< 1.5	✓	Case fatality rate	
Infant Mortality Rate (IMR) (/1000 livebirths)	23.7	< 30	✓	Hospitalisation rate	50 - 150
Neonatal Mortality Rate (NNMR) (/1000 livebirths)	7	< 20	✓		
OUTBREAK ALERT AND RESPONSE					
	INDICATOR	STANDARD			
Proportion of outbreaks investigated within 48 hours	100%	100%	✓		
Number of outbreaks reported	3				

## Reproductive Health

ANTENATAL CARE			FAMILY PLANNING		
	INDICATOR	STANDARD		INDICATOR	STANDARD
Antenatal care coverage	71%	> 90%	✗	6%	≥ 30%
Coverage of antenatal tetanus vaccination	79%	> 95%	⚠	SOURCE OF CONTRACEPTIVE PREVALENCE DATA	HIS
DELIVERY CARE			SEXUAL AND GENDER-BASED VIOLENCE (SGBV)		
	INDICATOR	STANDARD		INDICATOR	STANDARD
Proportion of births attended by skilled personnel	97%	≥ 90%	✓	Total number of reported rapes	11
Proportion of births conducted by caesarean section	7%	5 - 15%	✓	Proportion of eligible rape survivors provided with PEP within 72 hours	70%
Proportion of newborn infants with low birth weight (<2500 gs) (weighed within 72 hrs)	2%	< 15%	✓	Proportion of eligible rape survivors provided with ECP within 120 hours	56%
Proportion of teenage pregnancies	1%			SEXUALLY TRANSMITTED INFECTIONS (STIS)	
Still birth rate ( / 1000 total births / month)	1			Number of genital ulcer diseases	54
Number of maternal deaths	0			Number of Pelvic Inflammatory diseases	5
Proportion of maternal deaths investigated within 48 hours		100%			

## HIV/AIDS

PREVENTION & TREATMENT	INDICATOR	STANDARD	PREVENTION & TREATMENT	INDICATOR	STANDARD
Proportion of blood units screened for HIV		100%	Number of PoCs receiving ART	384	
Condom distribution rate	0.05	> 0.5	Proportion of HIV positive mothers who swallowed ARV during delivery		100%
Proportion of TB patients tested for HIV		100%	PMTCT coverage	100%	100%

## Nutrition

NUTRITION GENERAL	INDICATOR	STANDARD	INFANT AND YOUNG CHILD FEEDING (IYCF)	INDICATOR	STANDARD
Prevalence of global acute malnutrition (6-59 months)	6%	< 20%	Proportion of children 0-23 months who were put to the breast within one hour of birth	85%	> 80%
Prevalence of stunting (6-59 months)	26%	< 20%	Proportion of infants aged between 0-5 months who received only breast milk during the previous day	84%	> 70%
Prevalence of severe acute malnutrition (6 - 59 months)	1%	< 3%	IYCF programmes targeting pregnant and lactating women established or maintained?		Yes
Prevalence of anaemia in children (6-59 months)	58%	< 20%	<b>MICRONUTRIENT DEFICIENCY</b>	<b>INDICATOR</b>	<b>STANDARD</b>
Prevalence of anaemia in women of reproductive age (15-49 yrs)	34%	< 20%	Percentage coverage of special nutrition product for prevention of undernutrition in young children (LNS/MNP/FBF)	0%	> 70%
<b>CMAM: SAM TREATMENT</b>	<b>INDICATOR</b>	<b>STANDARD</b>	<b>MAM TREATMENT</b>	<b>INDICATOR</b>	<b>STANDARD</b>
Number of new severe acute admissions (6-59 months)	922		Number of new moderate acute admissions (6-59 months)	1320	
Recovery rate	95%	> 75%	Recovery rate	92%	> 75%
Default rate	1%	< 0%	Default rate	2%	< 15%
Death rate	0%	< 10%	Death rate	0%	< 3%
Referral rate	3%		Referral rate	5%	

## Water, Sanitation and Hygiene (WASH)

WATER	INDICATOR	STANDARD	WATER STAFFING	INDICATOR	STANDARD
Average number of litres of potable water available per person per day	23	< 20	Number of hygiene promoters	15	1 : < 20,000
Proportion of households collecting >= 15 litres per person per day	100%	> 95%	<b>SANITATION</b>	<b>INDICATOR</b>	<b>STANDARD</b>
Number of persons of concern per water tap	138	< 80	Refugees per latrine/toilet	13	< 20
Proportion of tests at chlorinated water collection points indicating a measurable chlorine residual ( >= 0.1 mg/litre) and NTU <5	100%	> 95%	Proportion of households with drop-hole latrine or drop-hole toilet	39%	
Proportion of tests at unchlorinated water collection points showing 0 Faecal Coliforms/ 100 ml	0%	> 95%	Proportion of households report defecating in a toilet	2978%	> 85%
Proportion of households collecting drinking water from protected water sources only	100%	> 95%	Proportion of communal latrines compliant with UNHCR standards (cleanable slabs, privacy & structural safety)	86%	> 90%
Proportion of households with sufficient daily water storage capacity	91%	> 80%			