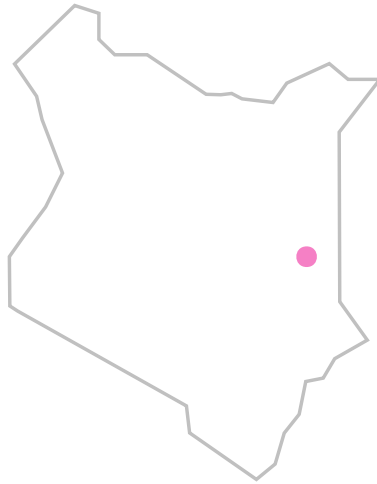
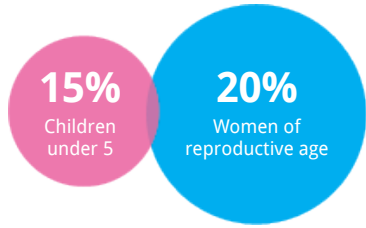


# Site report 2017 Ifo KENYA



## Population

**64,456** refugees



### Origin of refugees

SOMALIA ETHIOPIA SOUTHERN SUDAN DRC

Site opened Jan 1992

## Partners



## Key Indicators

### CRUDE MORTALITY RATE

**0.2** Deaths/1,000 refugees/month

### U5 MORTALITY RATE

**0.4** Deaths/1,000 refugees/month

### MATERNAL MORTALITY

**3** Deaths

### SKILLED BIRTH ATTENDANCE

**77%** of all births

### GAM

**13%** Global Acute Malnutrition

### SAM

**2%** Severe Acute Malnutrition

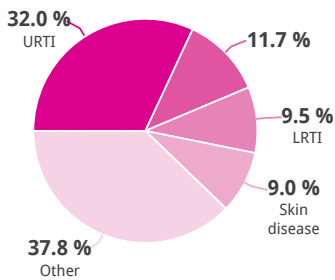
### WATER SUPPLY

**34** Liters/ person/ day

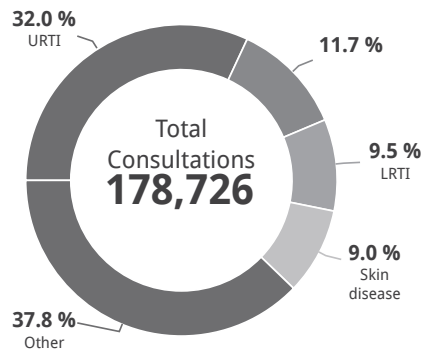
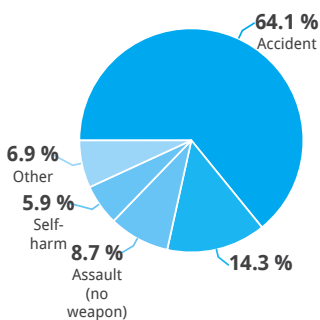
### LATRINE COVERAGE

**8** Refugees/communal toilets or latrines

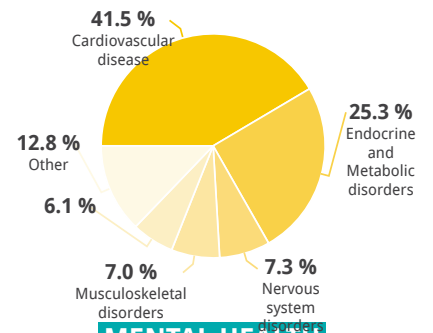
## COMMUNICABLE DISEASES



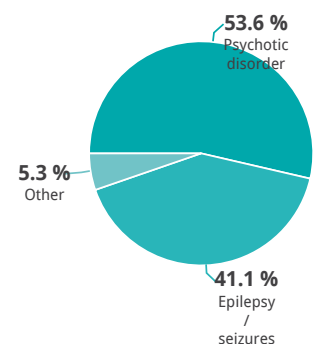
## INJURIES



## NON-COMMUNICABLE DISEASES



## MENTAL HEALTH



## Public Health

HEALTH STAFFING			MORBIDITY		
	INDICATOR	STANDARD		INDICATOR	STANDARD
Number of medical doctors	2	1 : < 50,000	⚠	Incidence of malaria among children under 5	0
Number of qualified nurses	24	1 : < 10,000	✓	Incidence of watery diarrhoea among children under 5	79
Number of community health workers	91	1 : < 1,000	✓	Incidence of pneumonia among children under 5	80
ACCESS AND UTILIZATION			VACCINATION		
	INDICATOR	STANDARD		INDICATOR	STANDARD
Consultations per trained clinician per day	69	< 50	✗	Incidence of pneumonia among over 5	22
Health utilisation rate (new visits / refugee / year)	2.4	1 - 4	✓	Tuberculosis success rate	86% < 90% ⚠
Proportion of host population consultations	0%			Were any MDR/X-TB cases diagnosed among PoCs?	Yes No ✗
MORTALITY			IN-PATIENT DEPARTMENT (IPD)		
	INDICATOR	STANDARD		INDICATOR	STANDARD
Crude Mortality Rate (CMR) (/1000/month)	0.2	< 0.75	✓	Full vaccination coverage	108% < 95% ✓
Under-five Mortality Rate (U5MR) (/1000/month)	0.4	< 1.5	✓	Measles vaccination coverage	100% < 95% ✓
Infant Mortality Rate (IMR) (/1000 livebirths)	18.2	< 30	✓	Source of vaccination data	HIS
Neonatal Mortality Rate (NNMR) (/1000 livebirths)	8	< 20	✓	Average length of stay (days)	3.3
OUTBREAK ALERT AND RESPONSE			SEXUAL AND GENDER-BASED VIOLENCE (SGBV)		
	INDICATOR	STANDARD		INDICATOR	STANDARD
Proportion of outbreaks investigated within 48 hours		100%		Case fatality rate	0.0
Number of outbreaks reported	0			Hospitalisation rate	80.7 50 - 150 ✓

## Reproductive Health

ANTENATAL CARE			FAMILY PLANNING		
	INDICATOR	STANDARD		INDICATOR	STANDARD
Antenatal care coverage	81%	> 90%	⚠	Contraceptive prevalence rate	2% ≥ 30% ✗
Coverage of antenatal tetanus vaccination	96%	> 95%	✓	Source of contraceptive prevalence data	HIS
DELIVERY CARE			SEXUALLY TRANSMITTED INFECTIONS (STIS)		
	INDICATOR	STANDARD		INDICATOR	STANDARD
Proportion of births attended by skilled personnel	77%	≥ 90%	✗	Total number of reported rapes	5
Proportion of births conducted by caesarean section	5%	5 - 15%	⚠	Proportion of eligible rape survivors provided with PEP within 72 hours	100% 100% ✓
Proportion of newborn infants with low birth weight (<2500 gs) (weighed within 72 hrs)	5%	< 15%	✓	Proportion of eligible rape survivors provided with ECP within 120 hours	100% 100% ✓
Proportion of teenage pregnancies	3%			Number of genital ulcer diseases	15
Still birth rate ( / 1000 total births / month)	3			Number of Pelvic Inflammatory diseases	152
Number of maternal deaths	3				
Proportion of maternal deaths investigated within 48 hours	100%	100%	✓		

## HIV/AIDS

PREVENTION & TREATMENT	INDICATOR	STANDARD	PREVENTION & TREATMENT	INDICATOR	STANDARD
Proportion of blood units screened for HIV	100%	100%	✓ Number of PoCs receiving ART	-29	
Condom distribution rate	0.02	> 0.5	✗ Proportion of HIV positive mothers who swallowed ARV during delivery		100%
Proportion of TB patients tested for HIV		100%	PMTCT coverage	100%	100% ⚠

## Nutrition

NUTRITION GENERAL	INDICATOR	STANDARD	INFANT AND YOUNG CHILD FEEDING (IYCF)	INDICATOR	STANDARD
Prevalence of global acute malnutrition (6-59 months)	13%	< 20%	⚠ Proportion of children 0-23 months who were put to the breast within one hour of birth	63%	> 80% ⚠
Prevalence of stunting (6-59 months)	19%	< 20%	✓ Proportion of infants aged between 0-5 months who received only breast milk during the previous day	76%	> 70% ✓
Prevalence of severe acute malnutrition (6 - 59 months)	2%	< 3%	✓ IYCF programmes targeting pregnant and lactating women established or maintained?		Yes
Prevalence of anaemia in children (6-59 months)	55%	< 20%	✗ MICRONUTRIENT DEFICIENCY	INDICATOR	STANDARD
Prevalence of anaemia in women of reproductive age (15-49 yrs)	46%	< 20%	✗ Percentage coverage of special nutrition product for prevention of undernutrition in young children (LNS/MNP/FBF)	61%	> 70% ⚠

CMAM: SAM TREATMENT	INDICATOR	STANDARD	MAM TREATMENT	INDICATOR	STANDARD
Number of new severe acute admissions (6-59 months)	1907		Number of new moderate acute admissions (6-59 months)	1603	
Recovery rate	95%	> 75%	✓ Recovery rate	97%	> 75% ✓
Default rate	1%	< 0%	✗ Default rate	0%	< 15% ✓
Death rate	1%	< 10%	✓ Death rate	0%	< 3% ✓
Referral rate	1%		Referral rate	2%	

## Water, Sanitation and Hygiene (WASH)

WATER	INDICATOR	STANDARD	WATER STAFFING	INDICATOR	STANDARD
Average number of litres of potable water available per person per day	34	< 20	✓ Number of hygiene promoters	71	1 : < 20,000 ✓
Proportion of households collecting >= 15 litres per person per day	100%	> 95%	✓ SANITATION	INDICATOR	STANDARD
Number of persons of concern per water tap	59	< 80	Refugees per latrine/toilet	8	< 20 ✓
Proportion of tests at chlorinated water collection points indicating a measurable chlorine residual ( >= 0.1 mg/litre) and NTU <5	100%	> 95%	✓ Proportion of households with drop-hole latrine or drop-hole toilet	59%	
Proportion of tests at unchlorinated water collection points showing 0 Faecal Coliforms/ 100 ml	0%	> 95%	✓ Proportion of households report defecating in a toilet	95%	> 85% ✓
Proportion of households collecting drinking water from protected water sources only	100%	> 95%	✗ Proportion of communal latrines compliant with UNHCR standards (cleanable slabs, privacy & structural safety)	0%	> 90% ✗
Proportion of households with sufficient daily water storage capacity	100%	> 80%			