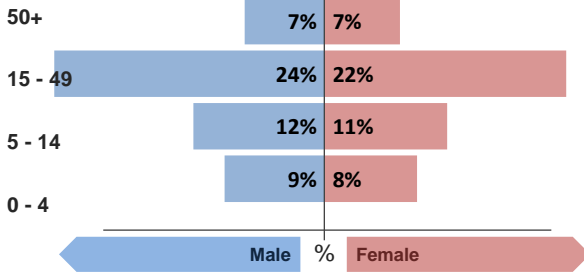


Refugee population

Total refugee population:

13,344 *

Demographic breakdown:



Key facts

Camp opened:
August 2013

Planned capacity:
10,000

Area:
0.42 Km sq

Population:
Syrian refugees, majority from Qamishli

* Source of population data: Estimates from UNHCR registration. For multiweek reports, average population is presented

Indicators at a glance

Indicator	Indicator	Standard
1	Health utilisation rate	3.6 1 - 4
2	Number of consultations per clinician per day	37 < 50
3	Proportion of first time antenatal visits made < 1st trimester	N/A ≥ 90%
4	Measles immunisation coverage	107% > 90%
5	Polio III immunisation coverage	105% > 90%
6	Crude Mortality Rate (CMR) (/1000/month)	0.0 < 1.5
7	Under-five Mortality Rate (U5MR) (/1000/month)	0.0 < 3.0
8	Neonatal Mortality Rate (NNMR) (/1000 livebirths)	0.0 < 40

Notes

HIGHLIGHTS

Indicators normal.

Upper respiratory tract infections remain the major cause of morbidity

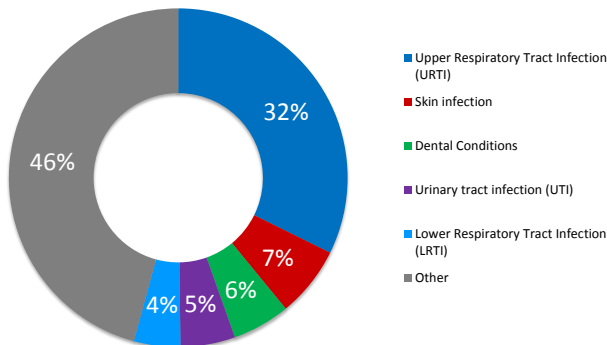
This public health profile for Kawergosk refugee camp is compiled from health data obtained from reporting agencies. Data is collected using standardised Health Information System (HIS) data collection and reporting tools and aims to be as accurate as possible.

Agencies reporting:

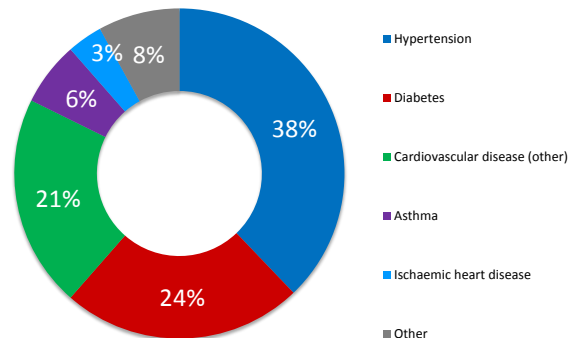
MSF
DOH

Morbidity

Acute health conditions (%)



Chronic health conditions (%)



Top 5 acute health conditions

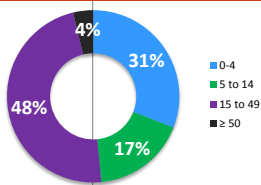
	% morbidity	# of cases
1 Upper Respiratory Tract Infection (URTI)	32%	1,318
2 Skin infection	7%	276
3 Dental Conditions	6%	225
4 Urinary tract infection (UTI)	5%	213
5 Lower Respiratory Tract Infection (LRTI)	4%	181
- Other	46%	1,868

Top 5 chronic health conditions

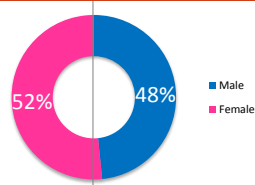
	% morbidity	# of cases
1 Hypertension	38%	109
2 Diabetes	24%	68
3 Cardiovascular disease (other)	21%	60
4 Asthma	6%	18
5 Ischaemic heart disease	3%	10
- Other	8%	23

Breakdown of acute health conditions

by age

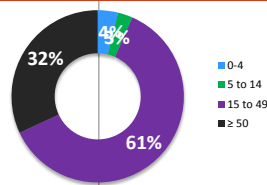


by gender

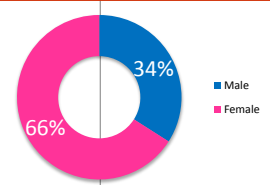


Breakdown of chronic health conditions

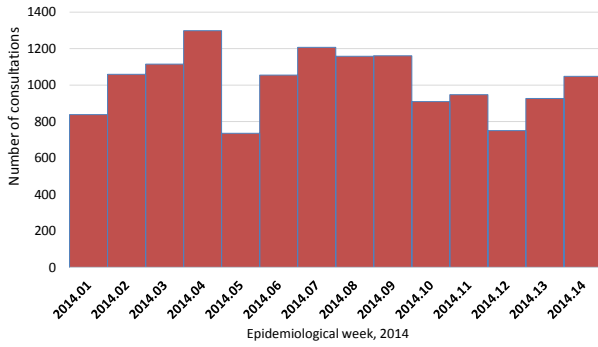
by age



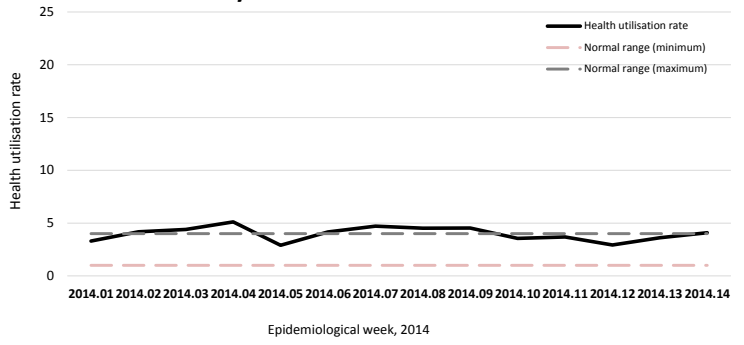
by gender



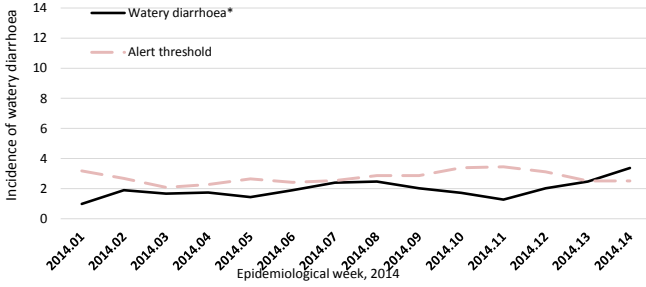
Number of consultations



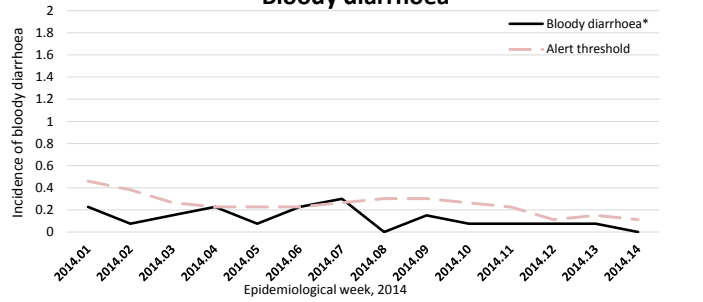
Weekly health utilisation rates



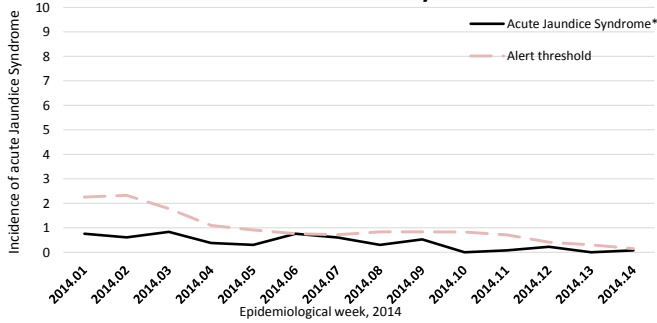
Watery diarrhoea



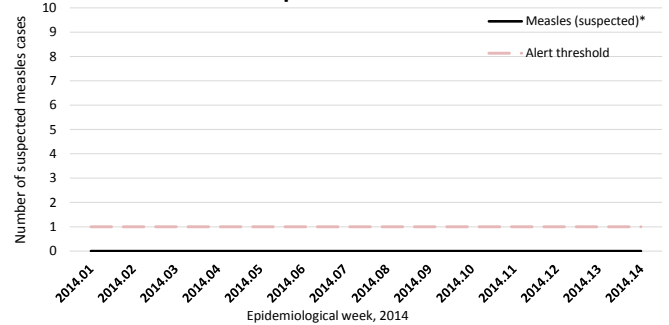
Bloody diarrhoea



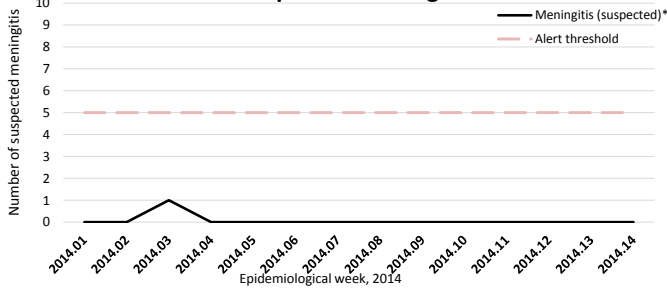
Acute Jaundice Syndrome



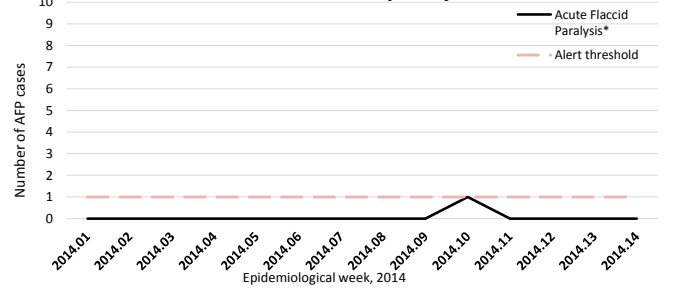
Suspected measles



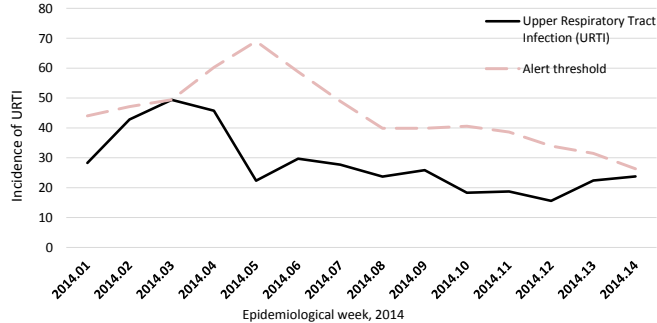
Suspected Meningitis



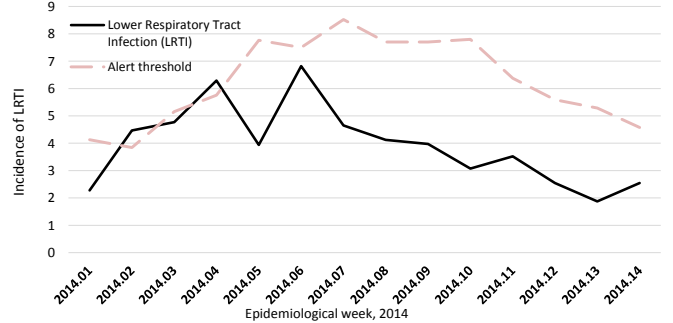
Acute flaccid paralysis



Upper respiratory tract infections



Lower respiratory tract infections



Calculation of disease alert thresholds:

Watery diarrhoea = 1.5 x baseline, Bloody diarrhoea = 1.5 x baseline, Acute Jaundice Syndrome = 1.5 x baseline, Upper respiratory tract infections = 1.5 x baseline,
 Meningitis = 5 cases, Acute Flaccid Paralysis = 1 case, Measles = 1 case,
 baseline = average incidence or number of cases over the previous 3 weeks

Public Health

Health Impact			Outbreak Alert and Response		
	Indicator	Standard		Indicator	Standard
Crude Mortality Rate (CMR) (/1000/month)	0.0	< 1.5	Number of outbreaks reported	0	
Under-five Mortality Rate (U5MR) (/1000/month)	0.0	< 3.0	% of outbreaks investigated within 48 hours	N/A	100%
Neonatal Mortality Rate (NNMR) (/1000 livebirths)	0.0	< 40	Routine immunization		
Access and utilization			BCG immunisation coverage	52%	> 90%
No. of health facilities	1.0	1 : < 10,000	DPT 1 immunisation coverage	86%	> 90%
Total number of consultations	4,581		Measles immunisation coverage	107%	> 90%
Health utilisation rate	3.6	1 - 4	Polio III immunisation coverage	105%	> 90%
No. of consultations per trained clinician per day	37	< 50	MMR immunisation coverage	129%	> 90%
Reproductive health			Vitamin A coverage	100%	> 90%
Sexual and gender-based violence			Incidence of reported rape		
Proportion of first time antenatal visits made < 1st trimester	N/A	≥ 90%	0.0		

Top 3 Mental health conditions

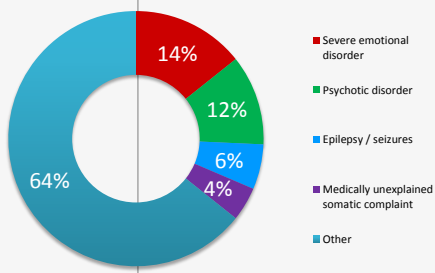
	% morbidity	# of cases
1 Severe emotional disorder	14%	10
2 Psychotic disorder	11%	8
3 Epilepsy / seizures	6%	4
- Other	69%	48

Top 3 injuries

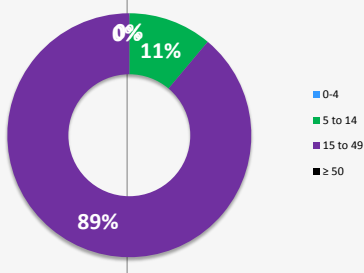
	% morbidity	# of cases
1 Injury (unintentional)	63%	89
2 Accident	14%	20
3 Burns	10%	14
- Other	13%	19

Breakdown of mental health conditions

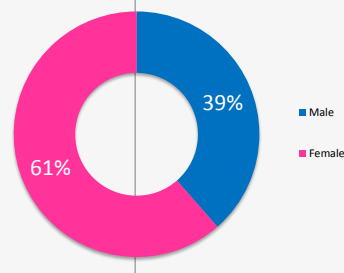
By cause



By age

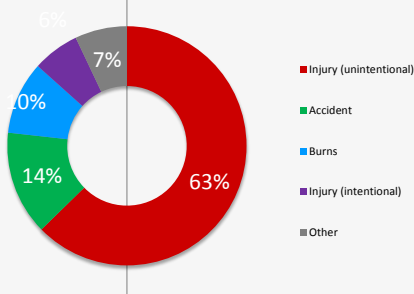


By gender

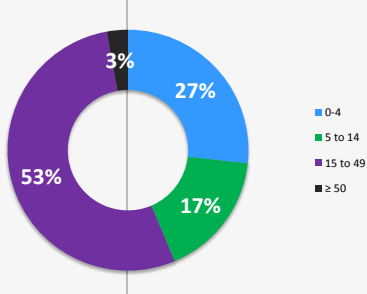


Breakdown of injuries

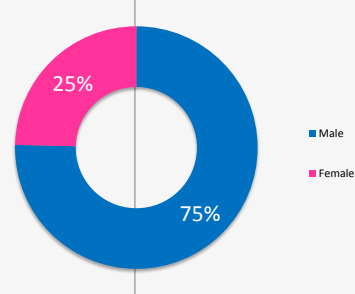
By cause



By age



By gender



We gratefully acknowledge the support of the following agencies:



View interactive maps and statistics online
<http://twine.unhcr.org>

