

# IRAQ HRP 2020



1.77M

PEOPLE TARGETED

643K (35.8%)

PEOPLE REACHED\*

309K

REACHED FOR COVID-19\*



US\$660.7M

TOTAL REQUIREMENT

\$167.6M (17%)

TOTAL FUNDING RECEIVED\*\*\*

(US\$263.3M)

COVID-19 REQUIREMENT\*\*

(\$49.6M) (19%)

COVID-19 FUNDING RECEIVED

## STRATEGIC OBJECTIVES

1

CRITICAL PROBLEMS RELATED TO PHYSICAL AND MENTAL WELL-BEING

1.65M

PEOPLE TARGETED

429K (26%)

PEOPLE REACHED\*

2

CRITICAL PROBLEMS RELATED TO LIVING STANDARDS

1.53M

PEOPLE TARGETED

643K (42%)

PEOPLE REACHED\*

3

CRITICAL PROBLEMS RELATED TO PROTECTION

## HUMANITARIAN PARTNERS



162

TOTAL PARTNERS



107

ACTIVELY REPORTING



48

COVID-19 RESPONSE

# HUMANITARIAN RESPONSE OVERVIEW

## DASHBOARD FOR JANUARY TO JUNE 2020



## HUMANITARIAN TARGET AND RESPONSE BY POPULATION GROUP<sup>†</sup>



PEOPLE DISPLACED IN-CAMPS

277K

TARGETED<sup>††</sup>

271K

REACHED

PEOPLE DISPLACED OUT-OF-CAMPS

351K

TARGETED

149K

REACHED



RETURNEES

926K

TARGETED

318K

REACHED

## KEY ACHIEVEMENTS BY CLUSTER

CLUSTER / SECTOR	PEOPLE TARGETED	% TARGET REACHED <sup>†††</sup>	PEOPLE REACHED		FUNDING (US\$) REQUESTED	FUNDING (US\$) RECEIVED <sup>**</sup>	
			OVERALL	COVID-19			
CCCM	540 K	84	451 K	309 K	25.6 M	0.0	0.0 M
EDUCATION	331 K	16	53 K	24 K	30.9 M	17.5	5.4 M
EMERGENCY LIVELIHOODS	54 K	10	6 K	1 K	25.9 M	0.0	0.0 M
FOOD SECURITY	462 K	59	271 K	21 K	83.1 M	28.4	23.6 M
HEALTH	1 M	63	643 K	7 K	103.8 M	11.7	12.1 M
PROTECTION, HLP & MA	883 K	15	132 K	25 K	97.7 M	3.5	3.4 M
CHILD PROTECTION	589 K	26	151 K	33 K	39.2 M	13.3	5.2 M
GENDER-BASED VIOLENCE	403 K	23	92 K	62 K	31.6 M	1.6	0.5 M
SHELTER & NFI	525 K	19	100 K	<1 K	50.8 M	0.0	0.0 M
WASH	889 K	50	442 K	102 K	50.5 M	20.8	10.5 M
MPCA	369 K	2	15 K	9 K	86.2 M	11.9	10.3 M
CCS	-	-	-	-	15.0 M	21.3	3.2 M

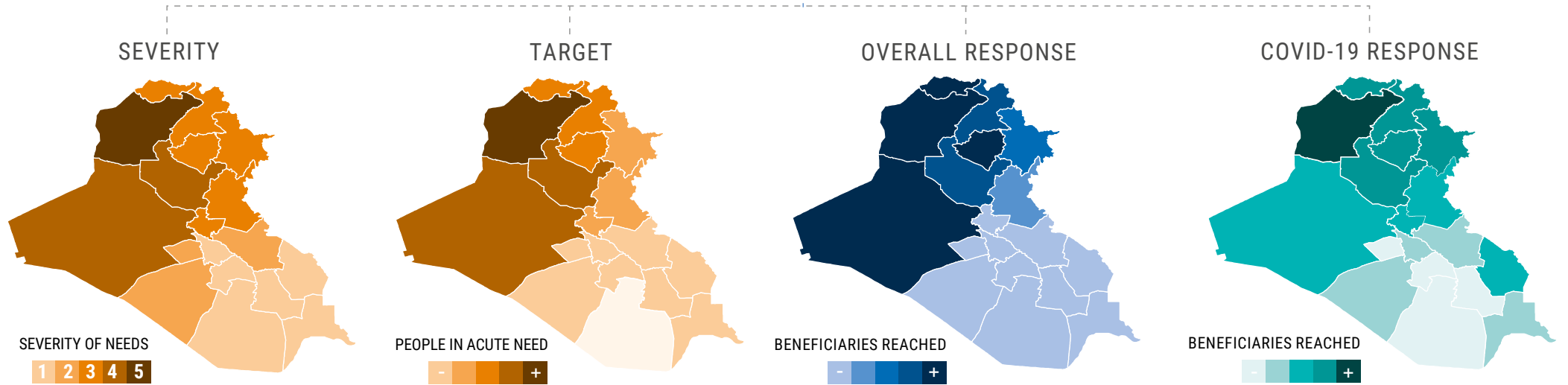
\* People reached indicates people who have received at least one form of assistance.

\*\* COVID-19 requirement is a component of the total requirement of US\$660.7M.

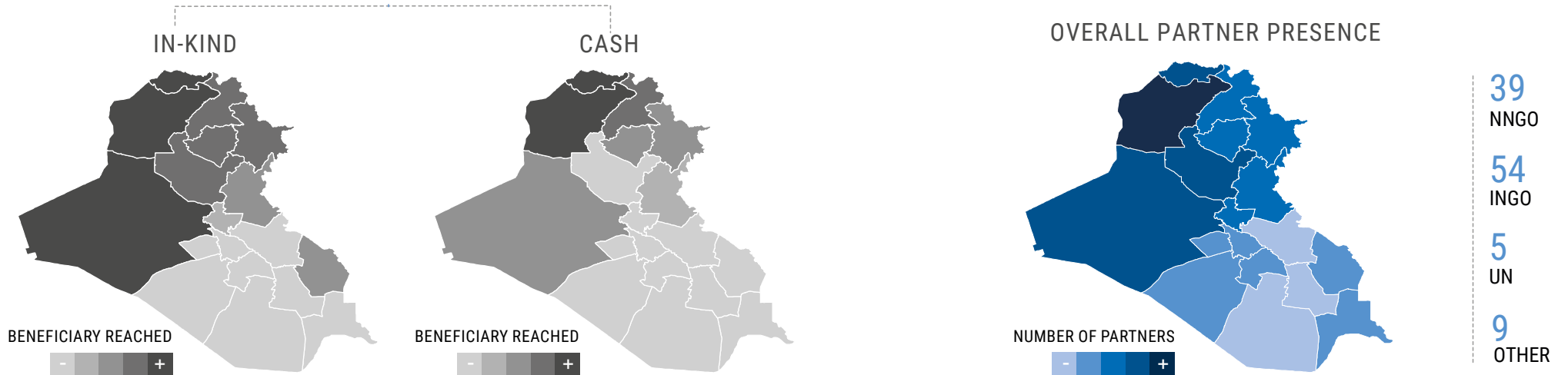
\*\*\* Source <https://fts.unocha.org/appeals/866/summary>, extracted on 30-June-2020.

GP: General Protection, MA: Mine Action, HLP: Housing, Land and Property sub-clusters, WASH: Water, Sanitation and Hygiene, CCCM: Camp Coordination and Camp Management, SHELTER/NFI: Shelter and Non-Food Items, MPCA: Multi-Purpose Cash Assistance. (†) Targets relate to the Specific Objectives of Strategic Objective 1; (††) The target (as of June) for IDPs in camp will decrease in 2020 as camp populations are expected to decrease (see p.14 of the HRP); ††† Targets for CCCM, Food Security and WASH are monthly targets (as opposed to annual targets) and, therefore, showing a higher % of beneficiaries reached.

### OVERVIEW



### RESPONSE BY MODALITY TYPES





# IRAQ

## OVERALL PARTNER PRESENCE AND PEOPLE REACHED (JANUARY TO JUNE 2020)

### NUMBER OF CLUSTER PARTNERS BY GOVERNORATE (OVERALL RESPONSE)

Clusters	Al-Anbar	Al-Basrah	Al-Muthanna	Al-Najaf	Al-Qadissia	Al-Sulay.*	Babil	Baghdad	Diyala	Duhok	Erbil	Kerbala	Kirkuk	Maysan	Ninewa	Salah Al-Din	Thi Qar	Wassit	Total
CCCM	3					2		3	3	3	3		3		6	6			9
Education	4				1	1		1		6	1		2		8	3			14
Emergency Livelihoods	4								2				2		21	1			23
Food Security	1					1		1	1	1	2		1		2	1			3
Health	6					4	1	1	2	9	2		4		20	8			22
Protection, HLP & MA	7	1	1	1	1	2	1	2	3	7	3	1	5	1	14	2	1	1	22
Child Protection	2	2		2		3	1	4	2	5	4	2	3	1	16	3		1	29
Gender-Based Violence	3	1				2		2	2	7	3	1	2		12	2			20
Shelter & NFI	7					1		1	4	2	1		3		10	3			19
WASH	2	1		1		1		1	1	5	2	1	3		16	6			24
MPCA	1												1		3	2			4
<b>Total</b>	<b>26</b>	<b>4</b>	<b>1</b>	<b>4</b>	<b>3</b>	<b>16</b>	<b>3</b>	<b>11</b>	<b>17</b>	<b>30</b>	<b>16</b>	<b>4</b>	<b>20</b>	<b>3</b>	<b>75</b>	<b>25</b>	<b>2</b>	<b>2</b>	<b>107</b>

### PEOPLE REACHED BY CLUSTER AND GOVERNORATE (OVERALL RESPONSE)

Clusters	Target	Reached**	Al-Anbar	Al-Basrah	Al-Muthanna	Al-Najaf	Al-Qadissia	Al-Sulay.*	Babil	Baghdad	Diyala	Duhok	Erbil	Kerbala	Kirkuk	Maysan	Ninewa	Salah Al-Din	Thi Qar	Wassit
CCCM	539,884	450,832	25,615	-	-	-	-	13,086	-	1,680	6,902	134,547	15,442	645	105,242	-	118,018	29,655	-	-
Education	330,504	53,258	4,490					1,018				8,745	1,287		9,731		13,945	14,042		
Emergency Livelihoods	54,000	5,514	152								293				517		4,232	320		
Food Security	462,400	271,267	11,905					14,019		1,692	3,506	127,596	15,095		9,780		86,514	1,160		
Health	1,259,512	624,556	134,364					15,506	444	667	3,793	101,228	18,140		27,644		320,135	20,635		
Protection, HLP & MA	883,000	131,229	14,933	88	148	781	477	6,145	726	1,036	7,525	8,909	13,655	547	11,700	204	53,158	10,160	372	765
Child Protection	589,275	15,002	477	1,063		494		2,310	21	2,706	3,901	29,264	21,563	200	2,110	1,763	79,342	5,769		19
Gender-Based Violence	403,294	92,376	3,691	27				2,751		1,047	2,597	13,531	6,926	16	17,520		41,742	2,528		
Shelter & NFI	524,750	99,623	19,662					153		240	829	18,111	887		14,621		44,330	790		
WASH	889,357	441,683	18,526	20		5,059		1,229		84		113,424	15,850	10,080	9,273		177,802	90,336		
MPCA	368,850	14,907	1,252								382	184	104		554		10,543	1,550		

Sources: [fts.unocha.org/Clusters](https://fts.unocha.org/Clusters) Feedback: [ocha.iraq@un.org](mailto:ocha.iraq@un.org) [www.unocha.org](http://www.unocha.org) [www.reliefweb.int](http://www.reliefweb.int)

\* Al-Qadissiya, Al-Sulaymaniyaht \*\* Due to cluster reporting differences the beneficiaries for WASH are not included in the overall people reached.

### NUMBER OF CLUSTER PARTNERS BY GOVERNORATE (COVID-19 RESPONSE)

Clusters	Al-Anbar	Al-Basrah	Al-Muthanna	Al-Najaf	Al-Qadissia	Al-Sulay.*	Babil	Baghdad	Diyala	Duhok	Erbil	Kerbala	Kirkuk	Maysan	Ninewa	Salah Al-Din	Thi Qar	Wassit	Total
CCCM	3					2		3	2	3	3		2		7	4			10
Education										2			1		4	1			5
Emergency Livelihoods															2				2
Food Security	1					1		1	1	1	2		1		2	1			3
Health						2				1					5				6
Protection, HLP & MA	2	1	1	1	1		1	1	1	2	1	1	2	1	5	2	1	1	10
Child Protection		2		1		1	1	2	2	3	3	1	1	1	6	1		1	15
Gender-Based Violence	3	1				2		2	2	7	3	1	2		11	2			20
Shelter & NFI													1		1				2
WASH	1	1		1				1		1		1	2		8	2			10
MPCA	1												1		3	2			4
<b>Total</b>	<b>3</b>	<b>3</b>	<b>1</b>	<b>2</b>	<b>1</b>	<b>4</b>	<b>1</b>	<b>3</b>	<b>2</b>	<b>7</b>	<b>4</b>	<b>2</b>	<b>6</b>	<b>2</b>	<b>29</b>	<b>7</b>	<b>1</b>	<b>1</b>	<b>48</b>

### PEOPLE REACHED BY CLUSTER AND GOVERNORATE (COVID-19 RESPONSE)

Clusters	Reached***	Al-Anbar	Al-Basrah	Al-Muthanna	Al-Najaf	Al-Qadissia	Al-Sulay.*	Babil	Baghdad	Diyala	Duhok	Erbil	Kerbala	Kirkuk	Maysan	Ninewa	Salah Al-Din	Thi Qar	Wassit
CCCM	308,892	9,068	-	-	-	-	9,296	-	1,285	3,464	103,660	9,868	-	86,951	-	67,298	18,002	-	-
Education	23,860										1,073			7,846		7,630	7,311		
Emergency Livelihoods	829															829			
Food Security	21,204	931					1,096		130	274	9,976	1,181		765		6,759	92		
Health	6,619						3,820				731					2,068			
Protection, HLP & MA	25,392	701	38	45	404	56	5,292	101	307	1,177	1,355	3,290	82	3,875	41	7,219	1,131	77	201
Child Protection	33,106		142		12		1,347	15	894	2,164	8,199	6,572	108	24	1,214	10,788	1,614		13
Gender-Based Violence	62,032	3,664	18				1,262		1,046	2,583	4,534	5,128	15	15,381		27,493	908		
Shelter & NFI	185													119		66			
WASH **	101,703	641	20		5,059				84		2,764		10,080	8,003		71,451	3,601		
MPCA	9,249	1,252								382	184	104		554		4,885	1,888		