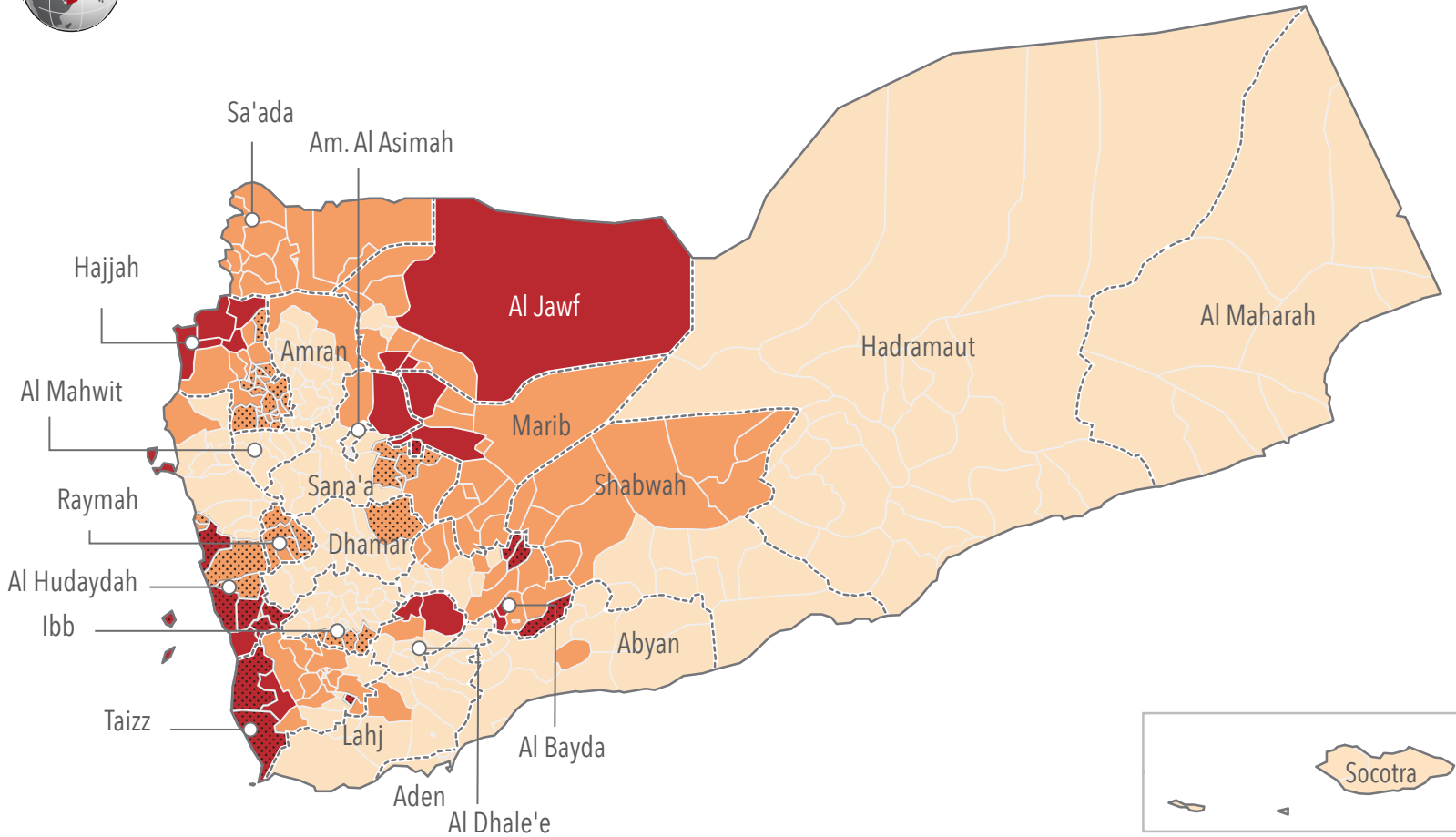




**DISTRICT ACCESS SEVERITY AS PERCEIVED BY HUMANITARIAN ACTORS**

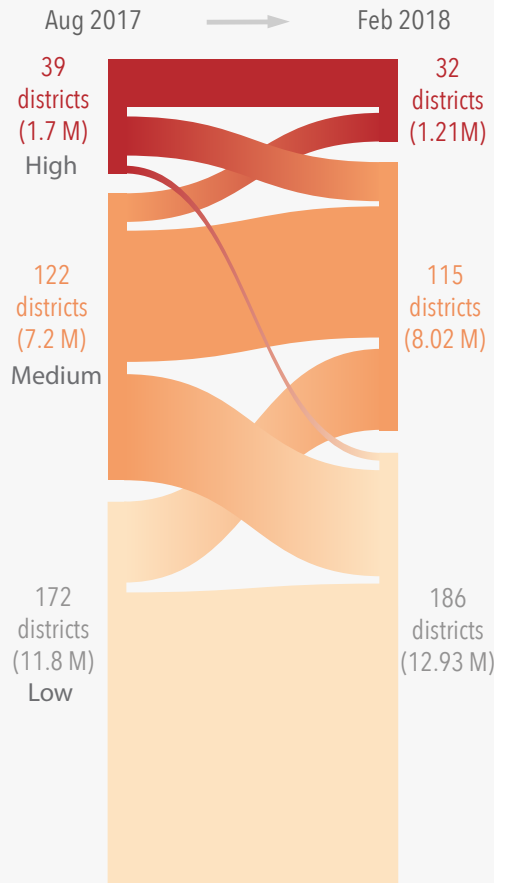


- Low access constraints:** No or very few access constraints. Armed groups, checkpoints, airstrikes or other impediments may be present, but these rarely result in travel restrictions. Humanitarian organisations can operate, and with adequate resources can reach all or nearly all targeted people in need.
- Medium access constraints:** Armed groups, checkpoints, air strikes and other impediments are present, and often result in restrictions on humanitarian movements and operations. Operations continue in these areas with regular restrictions.
- High access constraints:** Armed groups, checkpoints, air strikes or other impediments are present and very often result in restrictions on humanitarian movements and operations. Operations in these areas face high difficulties and sometimes are impossible. Even with adequate resources, partners would be unable to reach more than a minority of targeted people in need.
- Score increased compared to August 2017

**Methodology:** OCHA conducted structured focus group discussions with humanitarian organisations about access constraints encountered in all 333 districts of Yemen. Separate discussions were held with UN agencies, international NGOs and national NGOs. The findings were averaged and applied to a three-point severity scale, ranging from 'accessible' to 'high access constraints', to indicate the overall access severities of districts in Yemen.

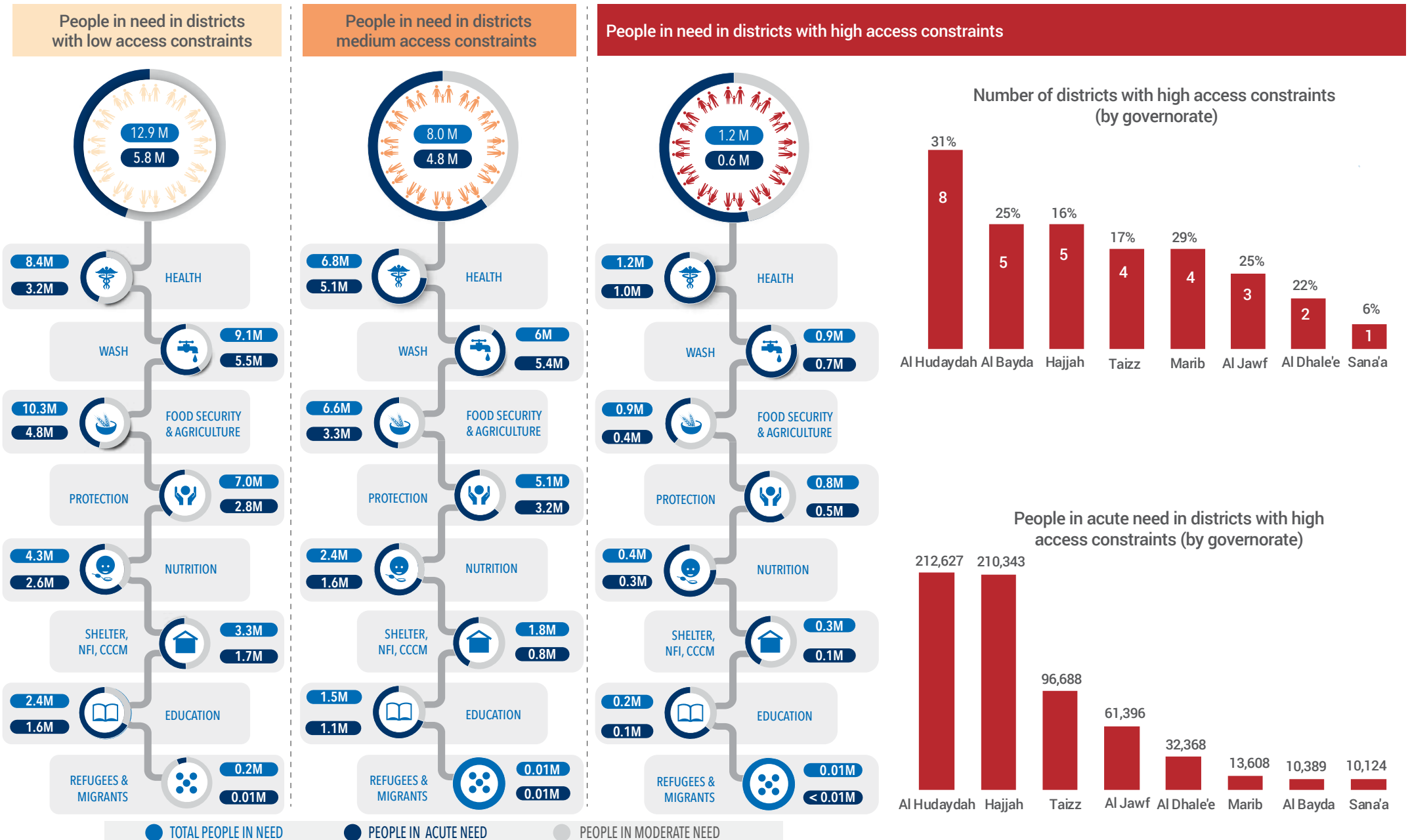
**Change in access severity (Aug 2017-Feb 2018)**

Compared to August 2017, the access environment in Yemen remains extremely difficult, with more than 1.2 million people in need in the most difficult areas to reach.

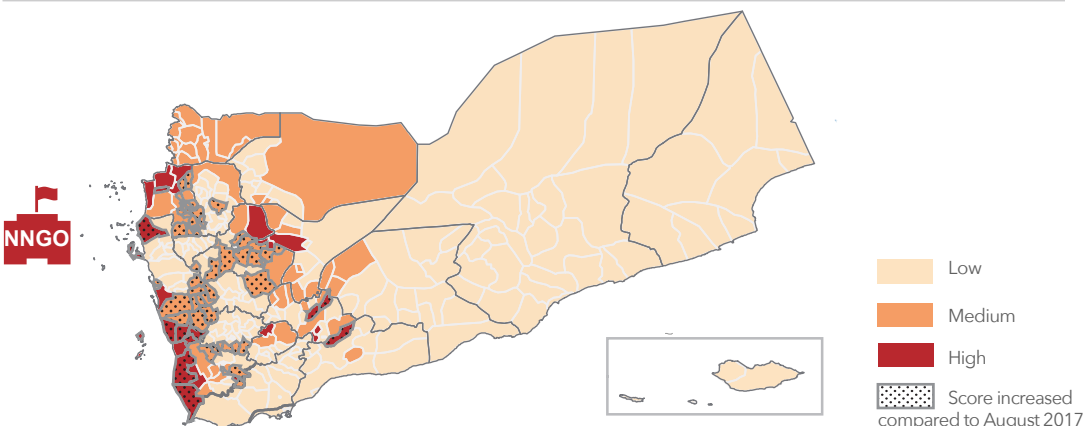
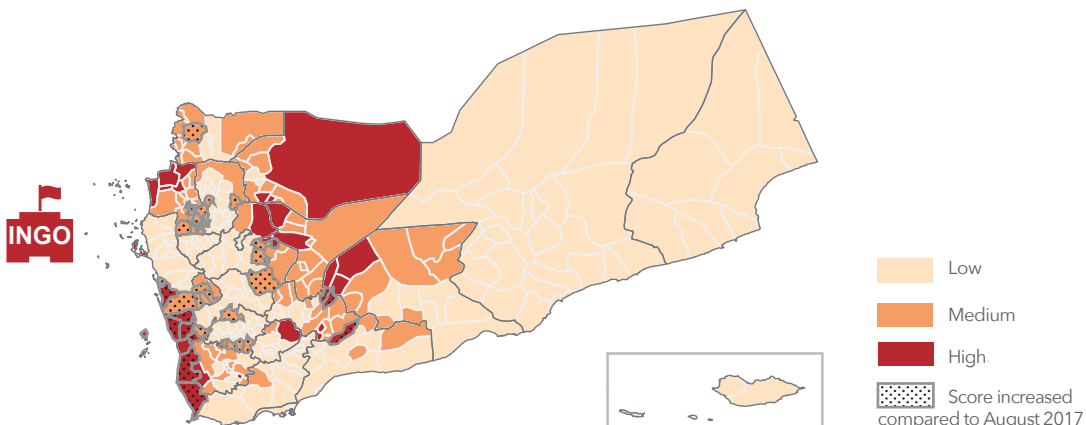
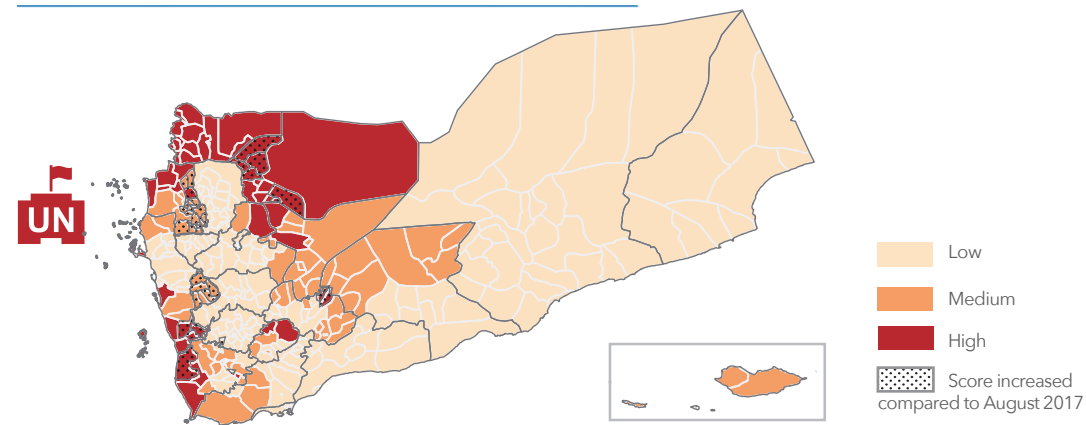


Figures in parentheses refer to total people in need of humanitarian assistance.

Of the 22.2 million people in need of assistance in Yemen, more than 1.2 million people in need live in districts with the highest access constraints, of whom 0.6 million are in acute need of assistance. The most difficult to access districts were in conflict-affected governorates, including Taizz, Sa'ada, Hajjah, Al Hudaydah, Al Jawf, Marib and Al Bayda. These governorates regularly experience heavy air strikes, shelling and ground clashes.



## PERCEIVED ACCESS SEVERITY BY ORGANISATION TYPE



Humanitarian actors reported access constraints in 90 per cent of districts in Yemen, most due to administrative, insecurity, or infrastructure-related challenges. The severity of each constraint varies, both by humanitarian actor and location, but several patterns can be observed:

- Administrative restrictions are the most pervasive access challenge facing humanitarian actors in Yemen, particularly for the approval of humanitarian activities and movements. All humanitarian actors have reported increasing difficulties in recent months surrounding the signing of sub-agreements.
- Insecurity and difficult physical environment restricts all humanitarian actors' ability to reach people in need.
- In recent months, all humanitarian actors have faced increasing difficulties at checkpoints, including demands to search personnel and vehicles.
- NNGOs report frequent interference in humanitarian programmes, movement restrictions, fees at checkpoints and violence against humanitarian personnel and facilities.

The below graph summarizes the reported constraints by organisation type:

