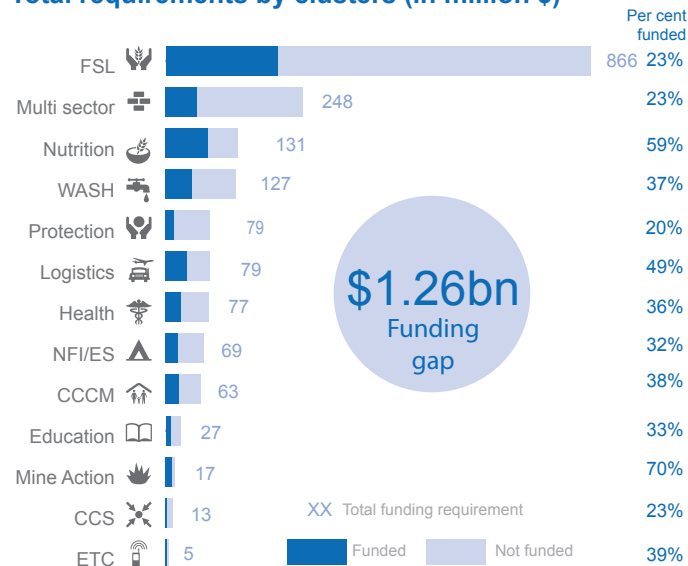




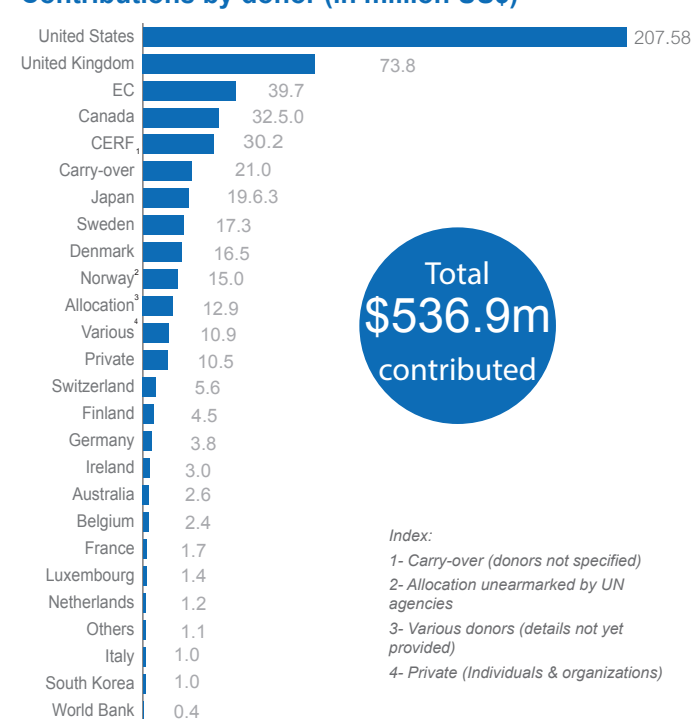
The crisis in South Sudan has led to conflict, displacement and suffering on a huge scale. Humanitarian agencies are focused on three top priorities: saving lives through immediate response to the survival needs of the most vulnerable; mitigating the looming threat of famine for those at greatest risk, providing food and nutrition assistance and supporting livelihood activities; and preventing the loss of a generation by protecting those most exposed to violence, abuse and disruption to education.

A total of \$1.8 billion is needed to reach up to 4 million people during 2014. \$536m (30%) of this amount has been secured, and \$1.26 billion (70%) in additional funding is urgently needed.

Total requirements by clusters (in million \$)



Contributions by donor (in million US\$)



Total \$536.9m contributed

Index:
 1- Carry-over (donors not specified)
 2- Allocation unearmarked by UN agencies
 3- Various donors (details not yet provided)
 4- Private (Individuals & organizations)

Key figures

\$ 1.8 billion required by June - December 2014

\$ 536 million funding received

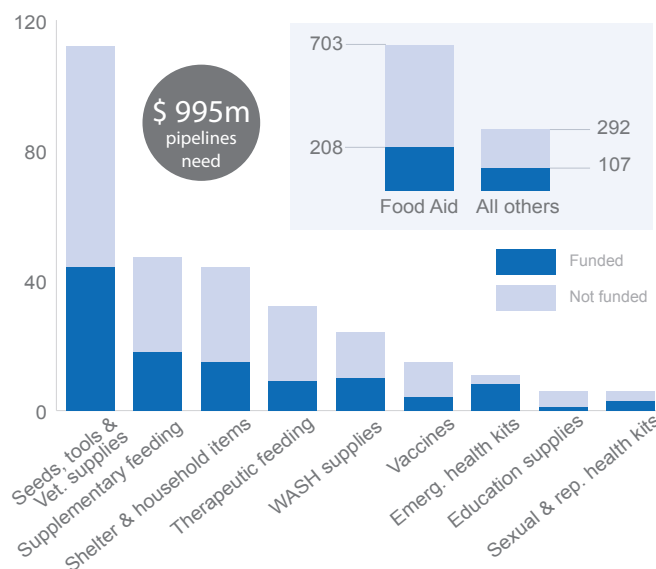
30% funding secured

4.0 million people in need of assistance

1.36 million people assisted

34% people reached

Pipeline requirements (in million US\$)



Funding trend 2012 - 2014

Funding patterns during 2014 broadly reflect those of 2012 and 2013, although the crisis this year has triggered a huge change in needs and requirements

