

DATE OF INTERVENTION	AFFECTED POPULATION	INTERVENTION	ESTIMATED NUMBERS RECEIVING HUMANITARIAN AID	SANITARY KITS GIVEN	FOOD BOXES GIVEN
May-June 2020	Migrants, displaced families	Humanitarian response to covid19			
	Children and adolescents		500	250	250
	Women		500	250	250
	Men		500	250	250
	Disable and elderly people		500	250	250
October 2020	Victims of armed conflict	Humanitarian response to covid19 and winter wave			
	Children and adolescents		25	12	13
	Women		25	13	12
	Men		25	13	12
	Disable and elderly people		25	13	13
November 2020	Victims of armed conflict	Humanitarian response to covid19 and winter wave			
	Children and adolescents		75	37	38
	Women		75	37	38
	Men		75	37	38
	Disable and elderly people		75	37	38

Data analysis: Nov 25 – 2020

DEPARTMENT			
CUNDINAMARCA: Bogota DC and Sutatausa			
BOGOTA DC	ZONE	AFFECTED POPULATION	NUMBER
Total families affected by winter wave: 1000	Suba	Children, women, men, migrants, displaced people	500
Other: covid19	Bogotá South	Children, women, men, migrants, displaced people	500
	others		1000
SUTATAUSA	ZONE/VEREDA		
total population: 4, 653 inhabitants	Peñas de Boquerón	children, women, men, displaced and disable people	100
Affected population by winter wave: 1,420	pedregal	children, women, men, displaced and disable people	150
	chipaquin	children, women, men, displaced and disable people	200
	ojo de agua	children, women, men, displaced and disable people	100
	hato viejo	children, women, men, displaced and disable people	100
	mochila	children, women, men, displaced and disable people	100
	novoa	children, women, men, displaced and disable people	100
	la quinta	children, women, men, displaced and disable people	100
	chircal	children, women, men, displaced and disable people	150
	cuncubita	children, women, men, displaced and disable people	120
	salitre	children, women, men, displaced and disable people	100
	Palacio	children, women, men, displaced and disable people	100
		DATA ANALYSIS: NOV 15-2020	

CHART NO. 1: ABBACOL FOCAL POINT



COLOMBIA

Information as for noviembre 15 – 2020



WINTER WAVE , COVID19

DEPARTAMENT AND FOCAL POINT WHERE TEAM ABBACOLIS DEPLOYING HUMANITARIAN INTERVENTION:

Bogotá DC

- **Departament of Cundinamarca:**

Bogota DC and surrounds

Sutatausa and surrounds

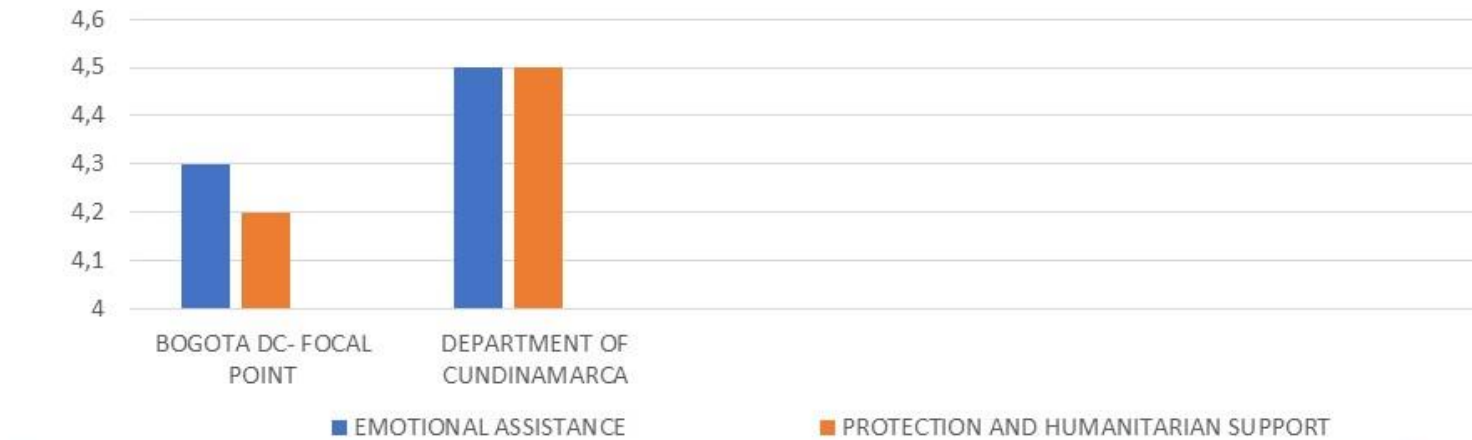


CHART NO. 2: DATA AND INFORMATION OF AFFECTATION



Affectation: data and Information

Information as for noviembre 15 – 2020



Required assistance

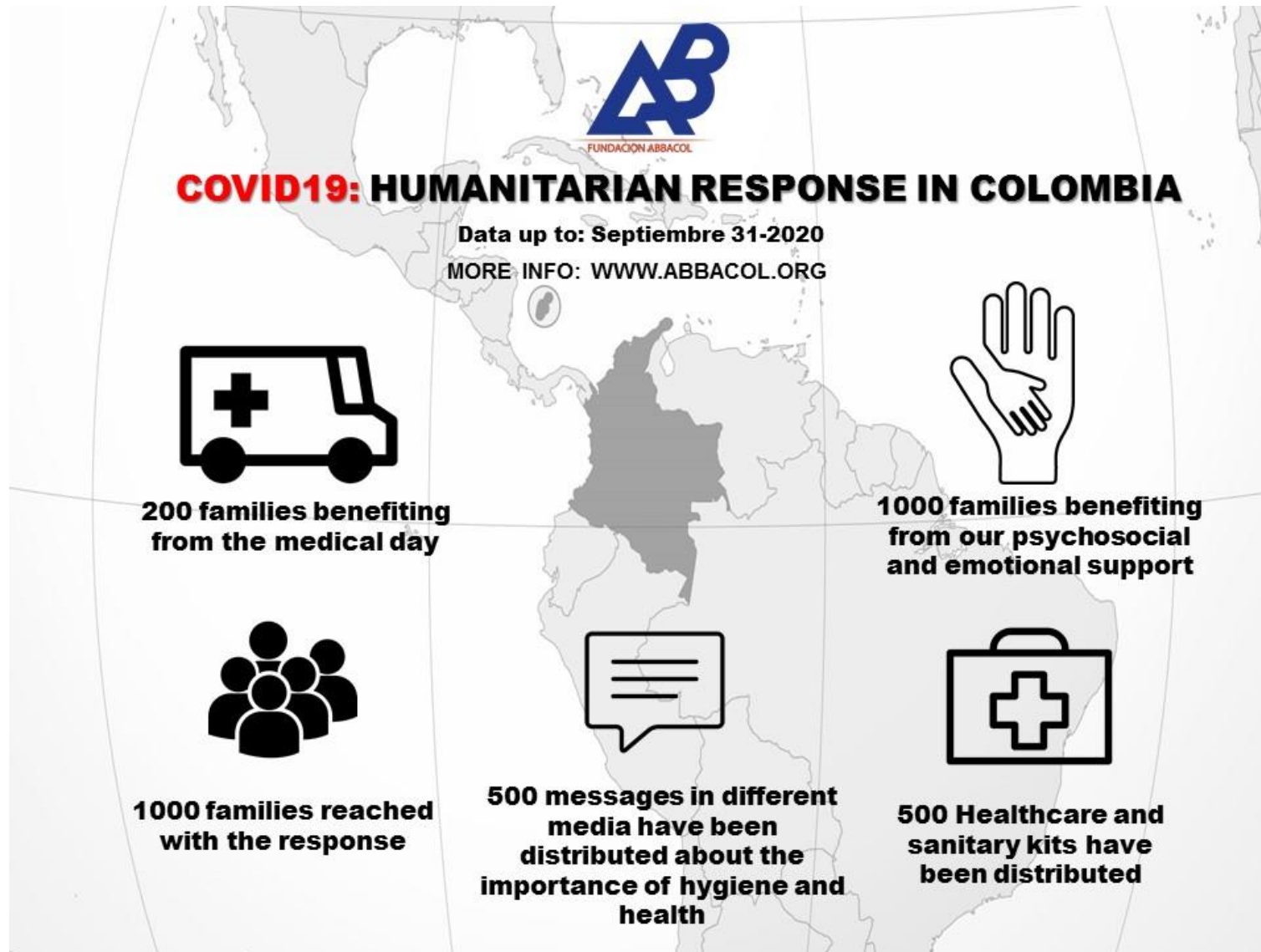


- support material for assistance
- housing and food
- Protection
- psychosocial and emotional support

Affected population



- Children and adolescents
- Men
- Women
- Personas con discapacidad y tercera edad

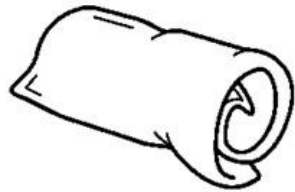




CHRISTMAS SEASON: ABBACOL HUMANITARIAN RESPONSE

Data analysis: 30 December - 2020

More info: www.abbacol.org



50 BLANKETS DISTRIBUTED



2000 FOOD BOXES DISTRIBUTED



2000 FAMILIES IMPACTED BY OUR RESPONSE



BENEFICIARY POPULATION LOCATED
IN BOGOTA DC AND CUNDINAMARCA