

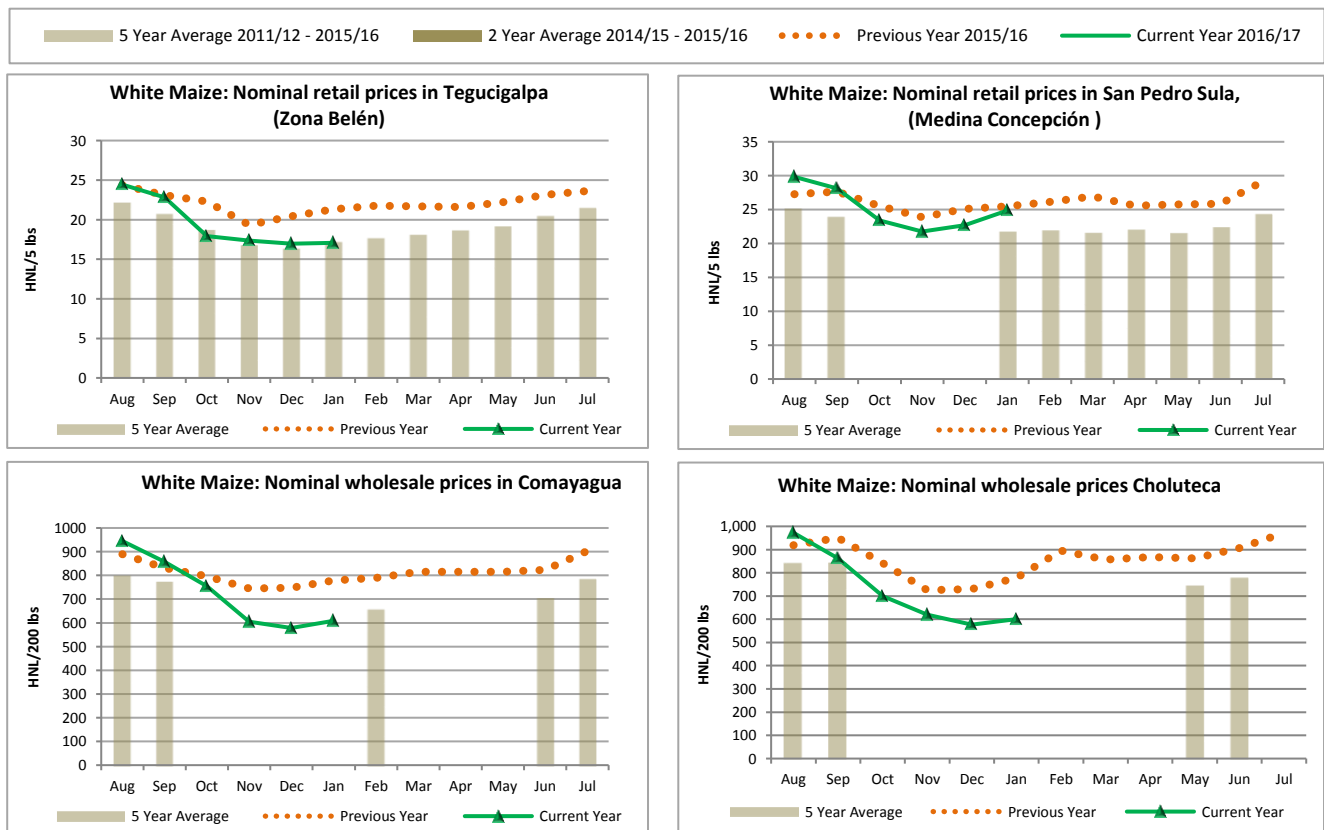
HONDURAS Price Bulletin

February 2017

La Red de Sistemas de Alerta Temprana contra la Hambruna (FEWS NET) monitorea las tendencias de precios de granos básicos en los países vulnerables a la inseguridad alimentaria. Para cada país y región FEWS NET, el Boletín Mensual de Precios proporciona un conjunto de graficas que muestran los precios mensuales del año actual en mercados urbanos seleccionados, así permitiendo a los usuarios comparar las tendencias actuales con respecto al promedio de los últimos cinco años y el año anterior, e indicando tendencias de la temporada anterior.

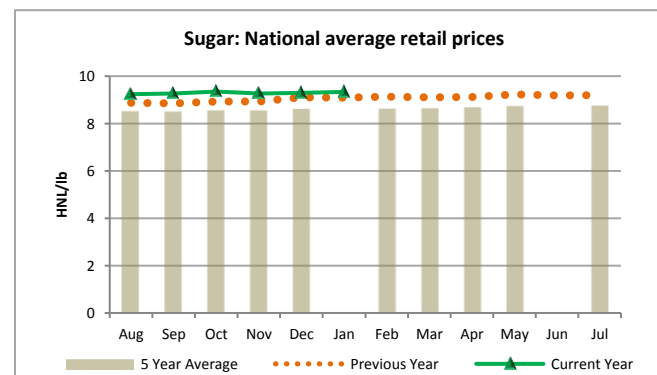
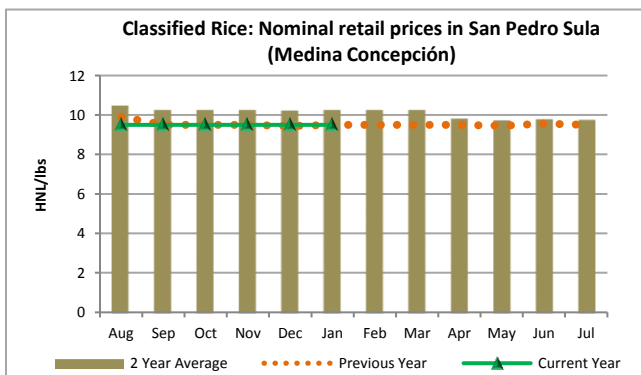
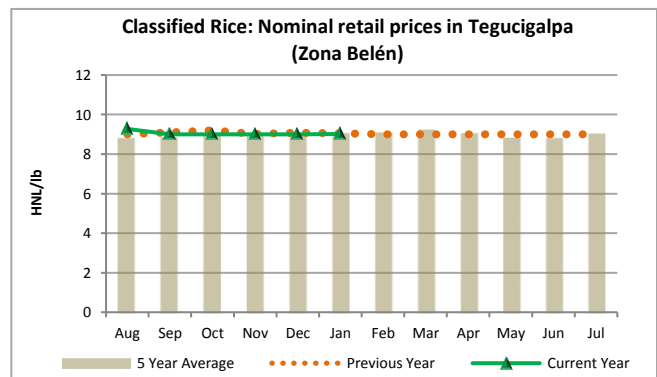
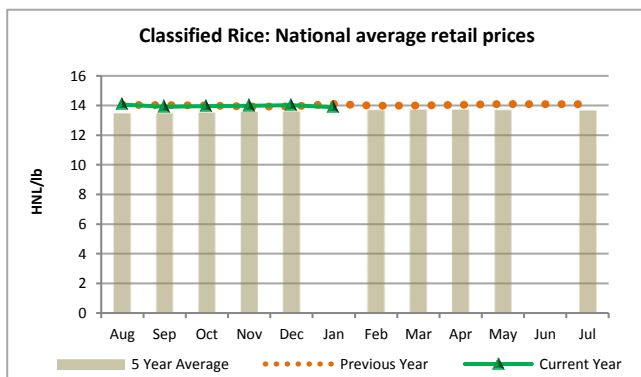
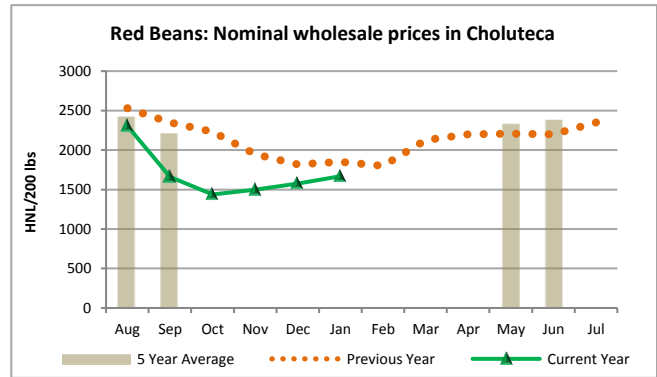
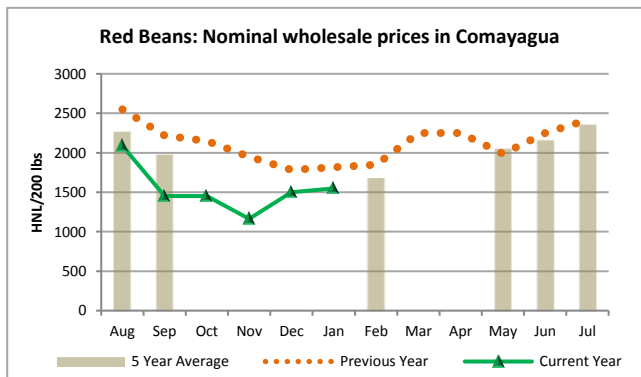
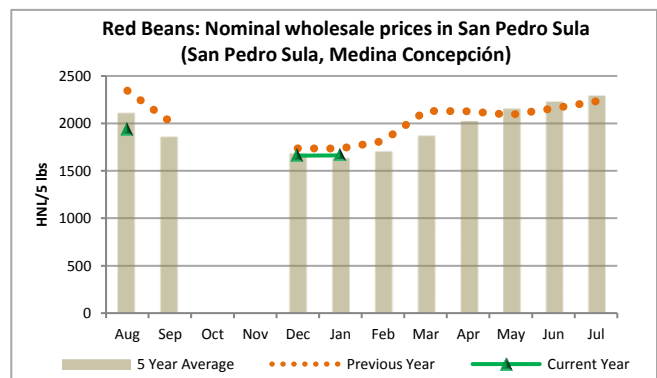
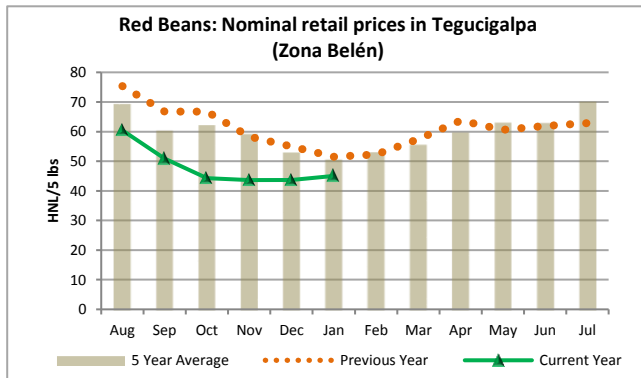


Maize, beans, and rice provide over half the calories in the typical diet in Honduras. All three commodities are domestically produced, but Honduras has historically had a deficit of both maize and rice. Tegucigalpa, the capital, is the most populous city and an important market center. San Pedro Sula is the second largest city. San Pedro Sula and Santa Rosa de Copán are important markets in the northwest of the country with strong trade connections with Guatemala. El Paraiso and Danli are major regional markets in the East with strong trade connections with Nicaragua. Comayagua is a major market in Central Honduras and an important assembly market for domestically-produced maize and beans. Marcala and La Esperanza are important market towns in the chronically food-insecure and mountainous south which are linked to markets in El Salvador. Choluteca market is in a chronically food-insecure area near the Pacific coast with strong trade ties both to Nicaragua and El Salvador.



FEWS NET gratefully acknowledges the Agricultural Market Information System (SIMPAH) of Honduras, the Central Bank of Honduras, and the Oil Management Commission.

5 Year Average 2011/12 - 2015/16 2 Year Average 2014/15 - 2015/16 Previous Year 2015/16 Current Year 2016/17



5 Year Average 2011/12 - 2015/16 2 Year Average 2014/15 - 2015/16 Previous Year 2015/16 Current Year 2016/17

