



BENTIU & RUBKONA COLLECTIVE CENTRES

Rubkona County // Unity State // South Sudan
GPS N 9.24, E 29.79



MARCH 2019 HEADCOUNT DATA COLLECTION

Between 26 and 29 March 2019, DRC Roving CCCM team conducted a planned, quarterly headcount in Bentiu and Rubkona collective centres.

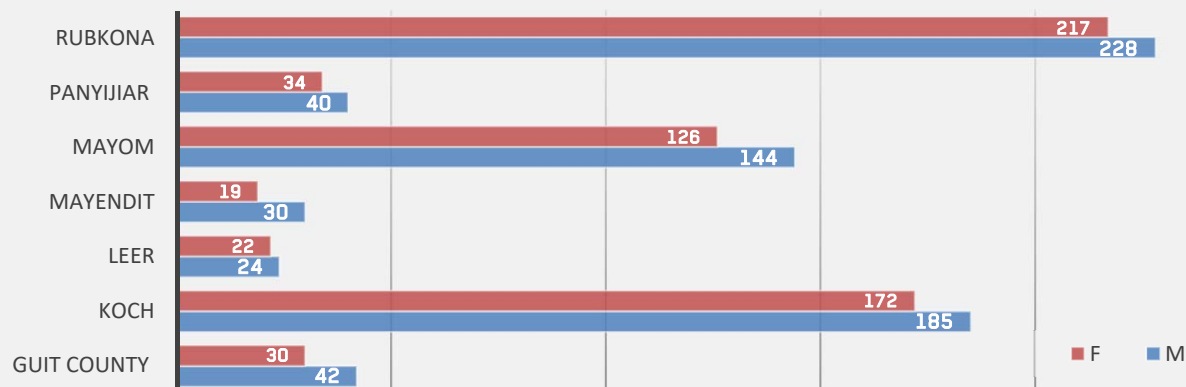
The following key points were found:

- There are **6 collectives centres** in Bentiu and Rubkona towns, compared to 12 in 2018
- The overall headcount was **1,313 individuals**
- There is a **decrease of 57 individuals** since December 2018 headcount
- Most of the IDPs state they are **originally from Rubkona** county (see graph below)
- The **key reasons for remaining** in the collective centres were access to food, feeling of safety, and no other options
- The **greatest needs** of the IDPs were stated as shelter / NFI, education and protection

Detail on each collective centre is summarized in the next 2 sheets.

For further information please contact DRC South Sudan Bentiu team Anna cpcm.ben@drc-ssudan.org and Ezekiel cccm-po.ben@drc-ssudan.org

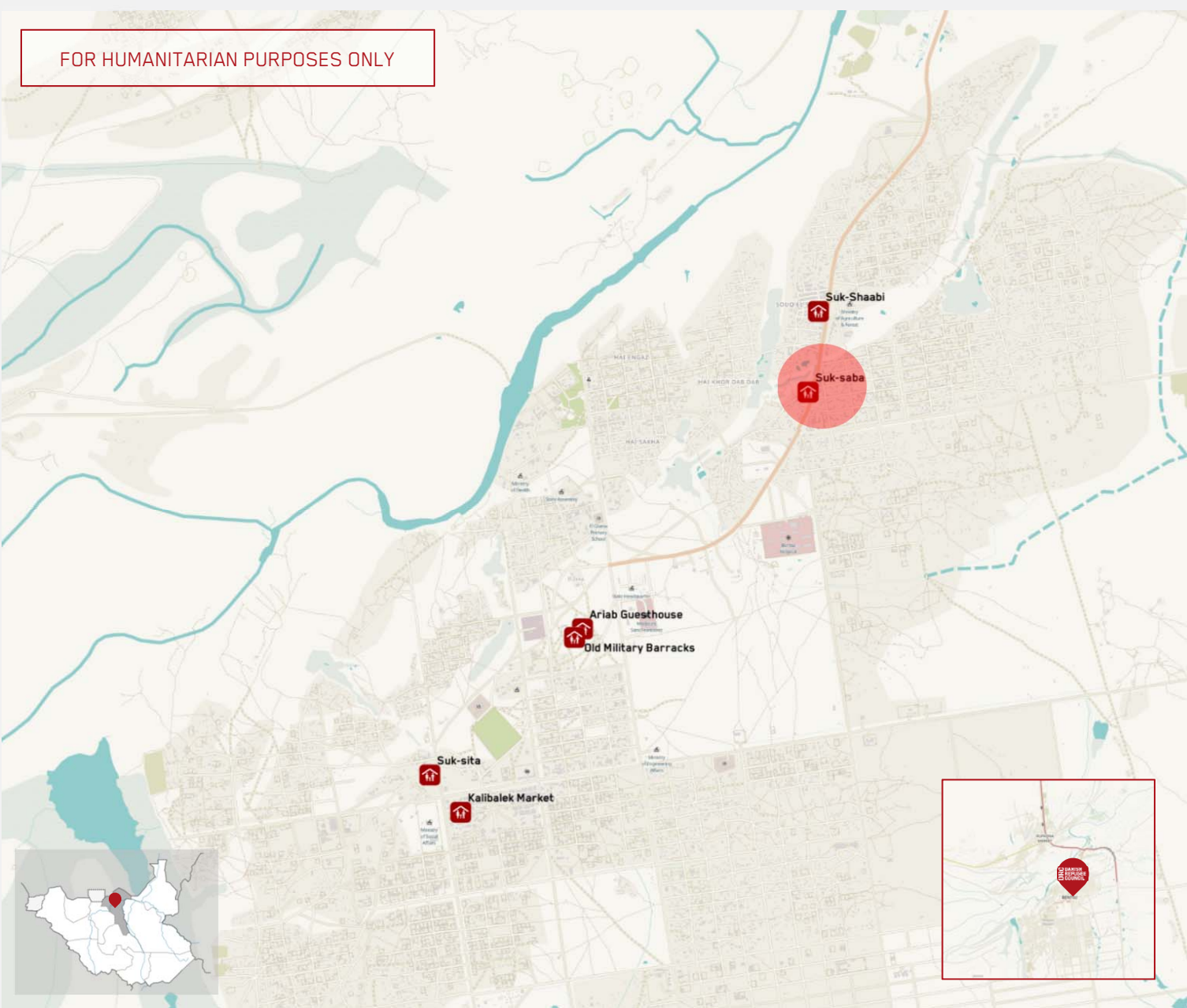
Origin of IDPs residing in collective centres





BENTIU COLLECTIVE CENTRES

Rubkona County // Unity State // South Sudan
GPS N 9.24, E 29.79

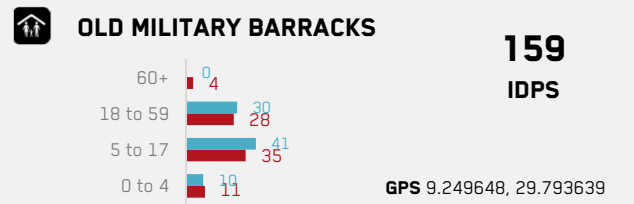
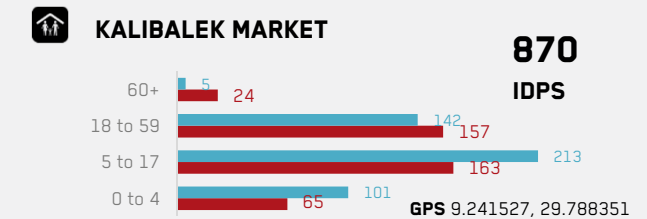
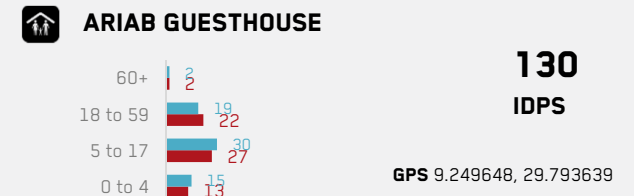
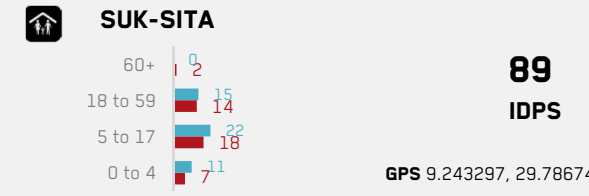


FOR HUMANITARIAN PURPOSES ONLY

POPULATION FIGURES // MARCH 2019

672 Male
607 Female

1279 IDPs



Data from latest population headcount in March 2019



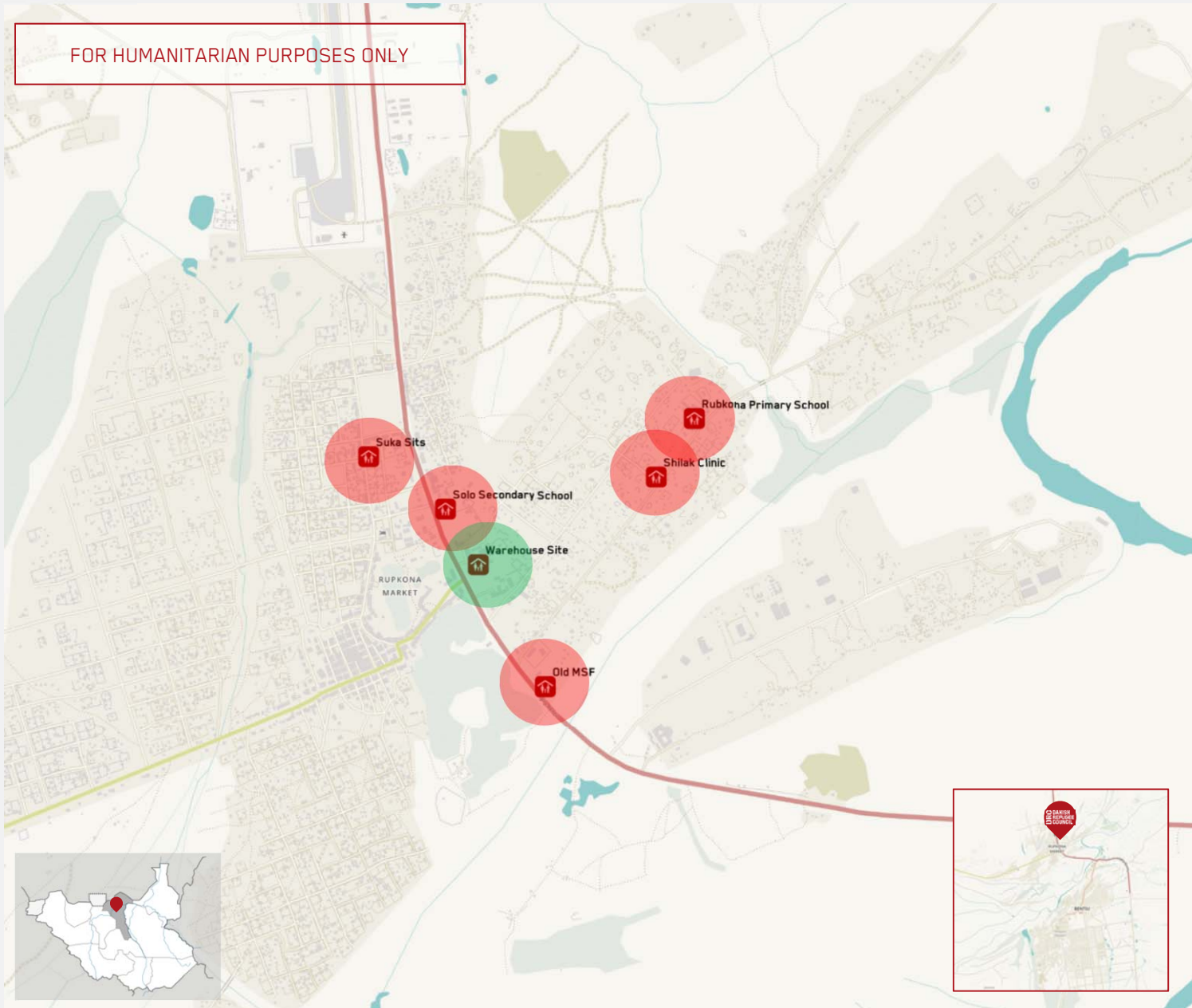
RUBKONA COLLECTIVE CENTRES

Rubkona // Unity State // South Sudan

GPS N 9.28, E 29.79



FOR HUMANITARIAN PURPOSES ONLY



POPULATION FIGURES // March 2019

34 IDPs

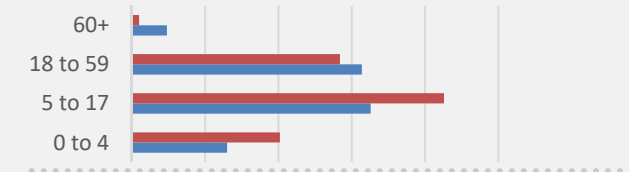
21 Male

13 Female



WAREHOUSE SITE

GPS 9.289839, 29.791211



Warehouse site (in green) is the only remaining collective site in Rubkona town. The sites in red were used as collective centres in 2018 but have since closed.

Most of the people who were living in these closed collective sites were moved to Kurkaal (allocated land) end 2018 following advocacy on IDP land by DRC and UNHCR and later identification of vulnerable people to be moved.

Some of the collective sites (Solo secondary school, Shilak clinic, Suk sita, Old MSF and Rubkona primary school) have been closed by the local authority in the past few months. DRC CCCM and protection continue to monitor the situation and support the most vulnerable IDPs.