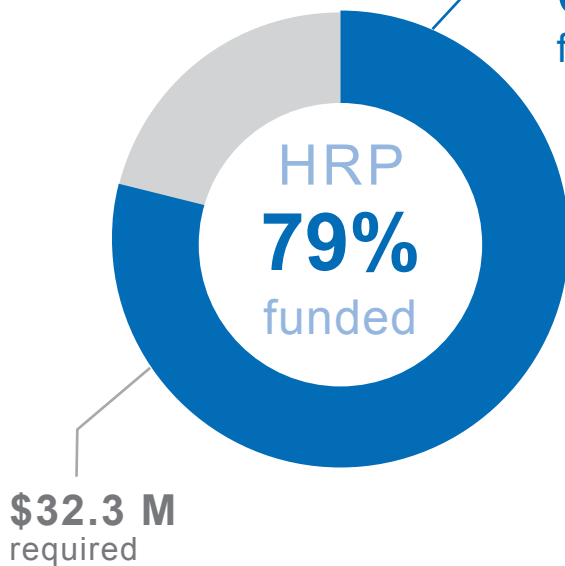


\$150.3 M

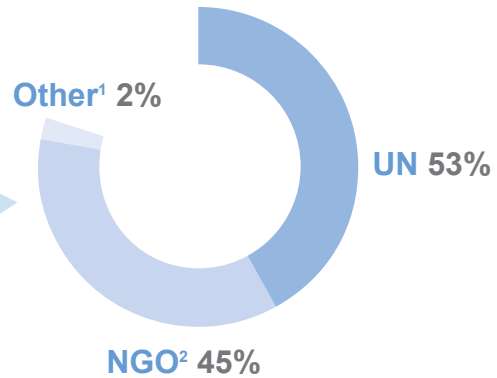
requested for the

2017 HUMANITARIAN RESPONSE PLAN

\$118 M
funded



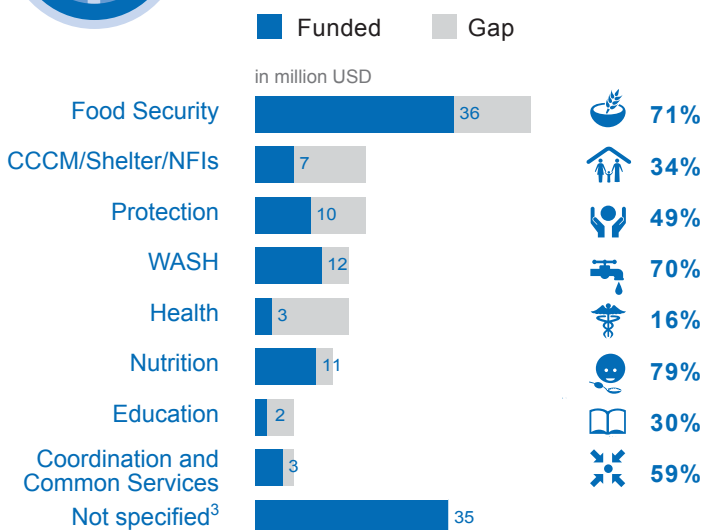
allocated to:



1. "Other" refers to recipients who have not been specified yet.
2. This percentage includes 4% of funds directly channeled through national NGOs.

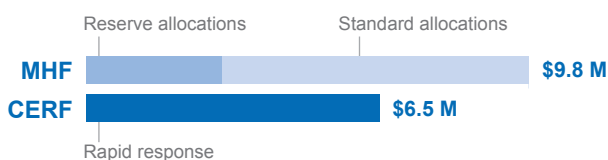


HRP FUNDING BY SECTOR



3. 'Sector not specified': information about detailed allocation by specific sector is not available at the time of reporting.

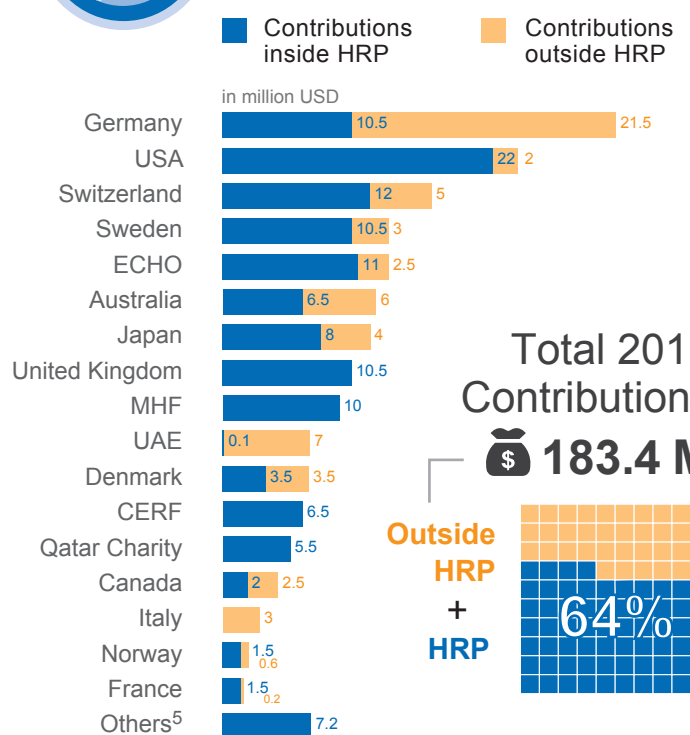
CERF and MHF⁴ allocations in 2017



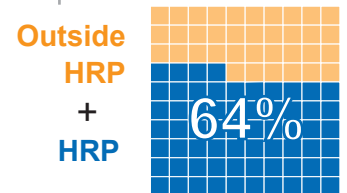
4. The Myanmar Humanitarian Fund (MHF) is a country-based pooled fund, managed by OCHA Myanmar.



DONOR CONTRIBUTIONS



Total 2017 Contributions
\$183.4 M



5. "Others" includes various donors, funds and organizations from the private sector.