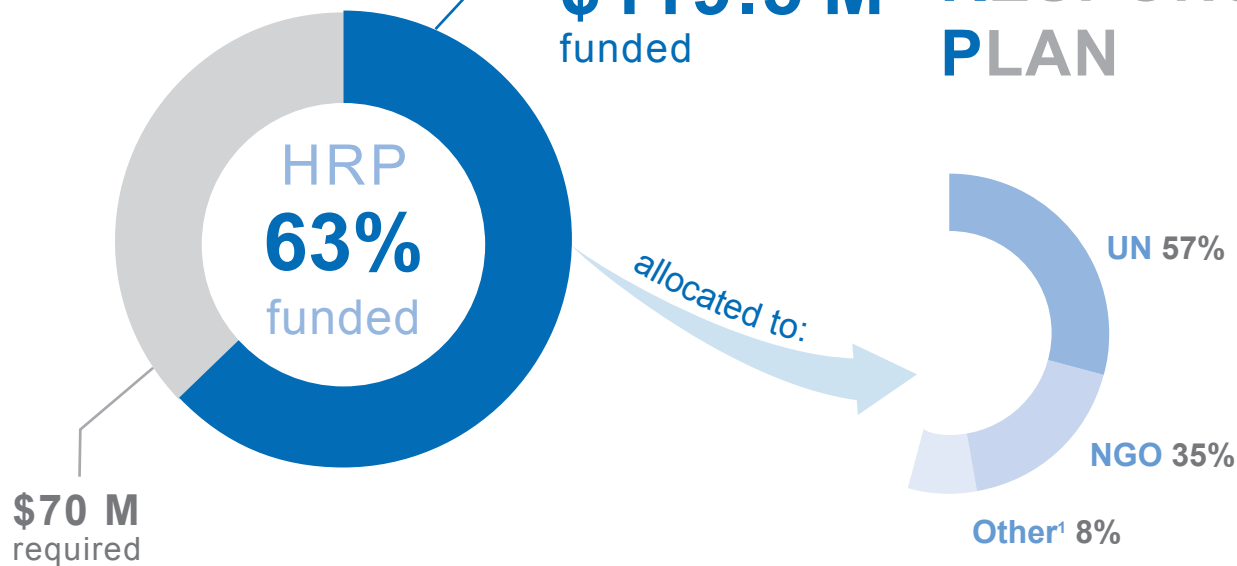


\$189.5 M

requested for the

2016 HUMANITARIAN RESPONSE PLAN

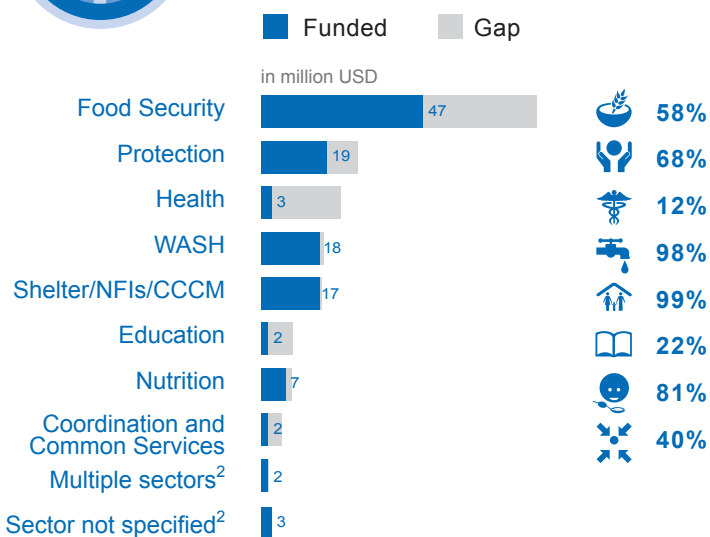
\$119.5 M
funded



1. "Other" refers to unallocated balance of the Myanmar Humanitarian Fund (MHF), and recipients who have not been specified yet.

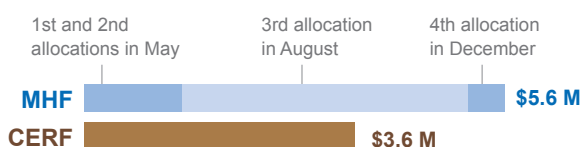


HRP FUNDING BY SECTOR

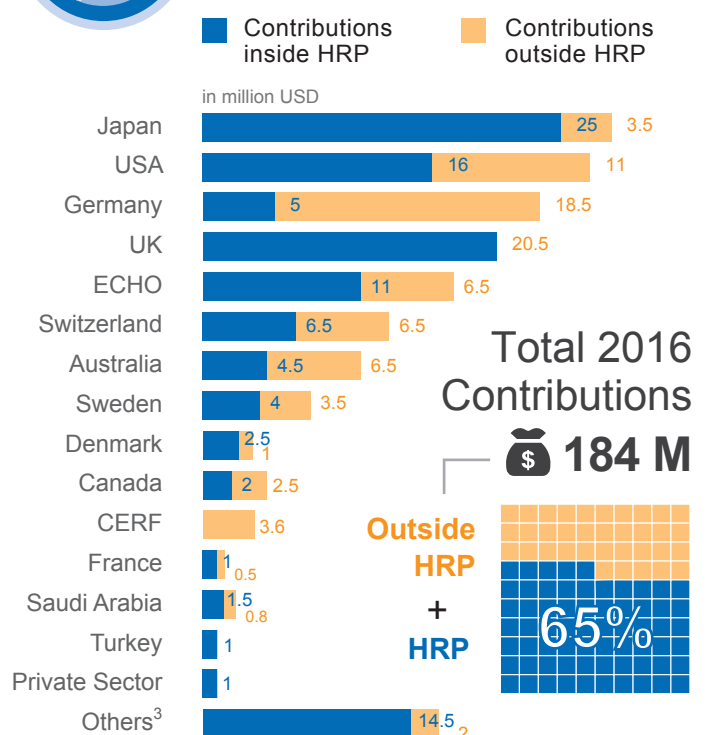


2. 'Multiple Sectors and Sector not specified': of a total of \$5 M, \$2 M has been allocated for Kachin/Shan, \$3 M for Rakhine. Information about detailed allocation by specific sector is not available at the time of reporting.

CERF and MHF allocations in 2016



DONOR CONTRIBUTIONS



3. "Others" includes Myanmar Humanitarian Fund and various donors